

CLEARING AND GRUBBING, INCLUDING INDIVIDUAL TREES AND STUMPS

RAMP 'B' 58+00.0 RT ~ 58+10.0 RT
RAMP 'B' 58+31.5 LT (S. LOCUS)
RAMP 'B' 58+71.2 LT (S. ASH)
VT RTE 15 16+26.4 LT (S. ASH)
VT RTE 15 16+59.4 LT (S. ASH)

REMOVE EXISTING PAVEMENT (COMMON EXCAVATION)

RAMP 'B' 58+00.0 ~ 59+67.7
SLIP RAMP 'B' 80+00.0 ~ 81+77.2

REMOVE EXISTING CONCRETE PAVEMENT (COMMON EXCAVATION)

VT RTE 15 16+15.0 ~ 16+36.7 RT (ISLAND)
VT RTE 15 16+24.6 ~ 16+56.5 RT
VT RTE 15 16+27.7 ~ 16+37.7 LT
VT RTE 15 16+82.6 ~ 17+42.1 RT
VT RTE 15 16+89.2 ~ 17+41.3 LT
VT RTE 15 17+92.2 ~ 18+37.1 LT
VT RTE 15 18+52.0 ~ 18+85.0 LT
VT RTE 15 20+26.1 ~ 20+33.2 LT
SLIP RAMP 81+70.7 RT ~ ROLAND CT. 29+15.0 LT
ROLAND CT. 29+15.0 RT ~ VT RTE 15 19+25.5 RT

STATE OF VERMONT

STONE FILL, TYPE I
RAMP 'B' 58+36 LT ~ 58+62 LT
8' WIDE IN DITCH

REMOVAL OF EXISTING FENCE

RAMP 'B' 59+12.7 LT
19 LF ~ REMOVE TO CLEAR ZONE
VT RTE 15 18+23.1 LT
3 LF ~ REMOVE TO BACK OF EASEMENT

BEGIN R. O. W. PROJECT
VT ROUTE 15 STA. 16+26
55.00' LT.

VERTICAL GRANITE CURB

RAMP 'B' 58+95.27 RT ~ RAMP 'B' 59+53.87 RT
RAMP 'B' 59+61.74 RT ~ VT RTE 15 16+94.90 RT
VT RTE 15 16+99.90 RT ~ VT RTE 15 17+23.30 RT
SLIP RAMP 81+50.35 LT ~ SLIP RAMP 58+95.27 LT
VT RTE 15 16+38.18 RT ~ VT RTE 15 16+43.17 RT
VT RTE 15 16+82.91 LT ~ VT RTE 15 16+93.39 LT
VT RTE 15 16+92.42 LT ~ VT RTE 15 16+92.60 RT
VT RTE 15 17+00.40 LT ~ VT RTE 15 17+00.60 RT
VT RTE 15 20+29.63 LT ~ VT RTE 15 20+33.65 LT
VT RTE 15 20+36.19 LT ~ VT RTE 15 20+39.38 LT
VT RTE 15 18+91.3 RT ~ VT RTE 15 19+36.05 RT
ROLAND CT. 29+48.36 RT ~ ROLAND CT. 29+22.73 LT
ROLAND CT. 29+32.90 RT ~ VT RTE 15 19+25.48 RT

COLD PLANING BITUMINOUS PAVEMENT

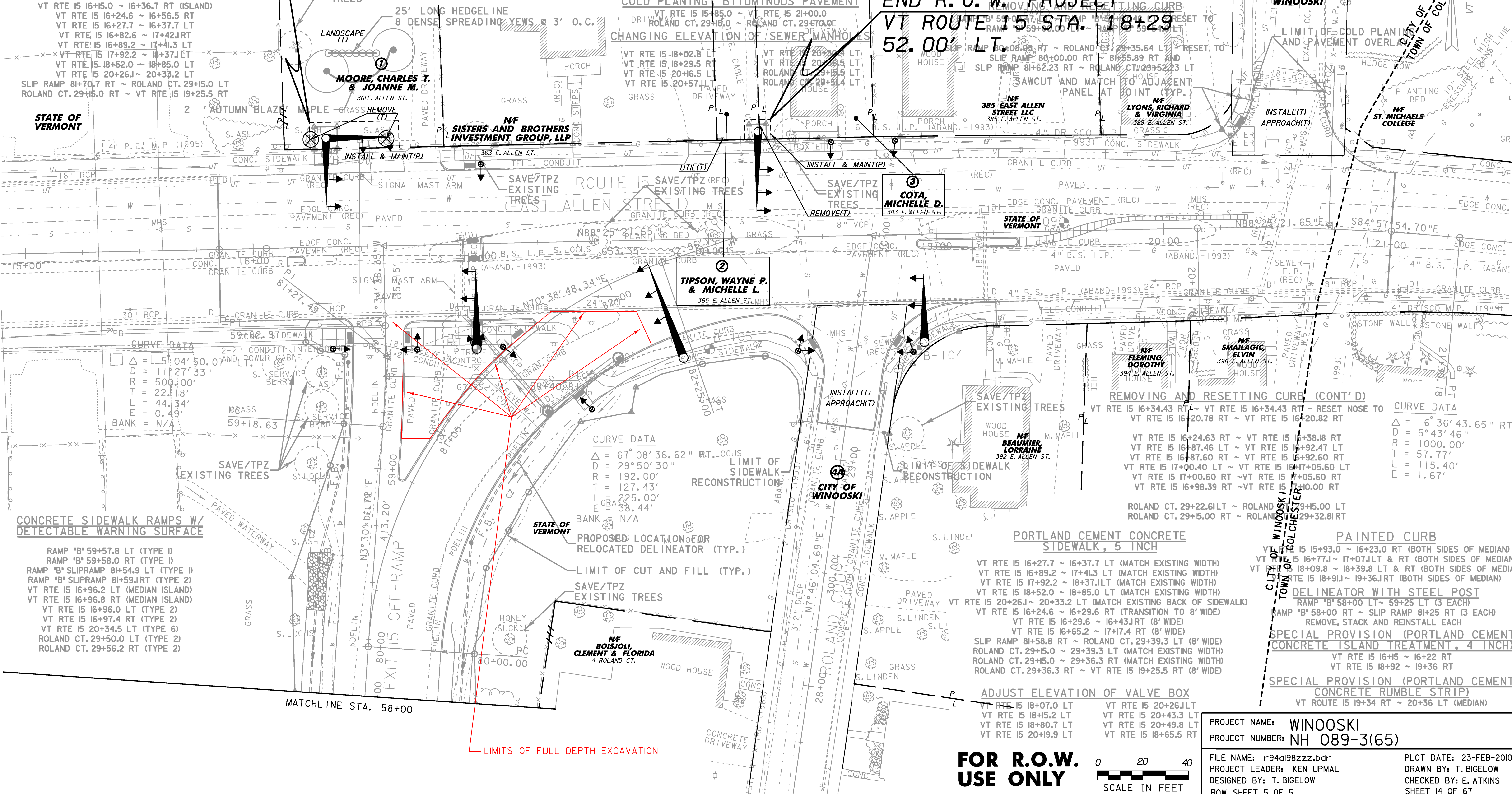
VT RTE 15 15+85.0 ~ VT RTE 15 21+00.0
ROLAND CT. 29+15.0 ~ ROLAND CT. 29+70.0
CHANGING ELEVATION OF SEWER MANHOLES
VT RTE 15 18+02.8 LT
VT RTE 15 18+29.5 RT
VT RTE 15 20+16.5 LT
VT RTE 15 20+57.1 LT
VT RTE 15 20+23.8 LT
VT RTE 15 20+36.5 LT
ROLAND CT. 29+15.5 LT
ROLAND CT. 29+51.4 LT

REMOVAL OF EXISTING CURB

VT RTE 15 16+38.18 RT ~ RAMP 'B' 59+62.25 LT
VT RTE 15 16+82.37 RT ~ VT RTE 15 17+60.17 RT
SLIP RAMP 81+97.50 RT ~ SLIP RAMP 80+96.48 RT
RAMP 'B' 59+13.1 RT ~ RAMP 'B' 59+57.69 RT
VT RTE 15 16+20.78 RT ~ VT RTE 15 16+34.43 RT
VT RTE 15 16+20.82 RT ~ VT RTE 15 16+34.58 RT
VT RTE 15 16+92.37 LT ~ VT RTE 15 17+00.60 LT
VT RTE 15 16+92.60 RT ~ VT RTE 15 17+00.60 RT
VT RTE 15 16+83.00 LT ~ VT RTE 15 16+98.39 RT
VT RTE 15 18+92.43 LT ~ VT RTE 15 20+23.1 RT (ENTIRE ISLAND. RESET IF NEEDED)
VT RTE 15 20+29.23 RT ~ VT RTE 15 20+39.38 LT
ROLAND CT. 29+32.81 RT ~ VT RTE 15 19+25.48 RT
ROLAND CT. 29+30.90 LT ~ ROLAND CT. 29+22.61 LT

END R. O. W. PROJECT
VT ROUTE 15 STA. 18+29
52.00' LT.

REMOVING AND RESETTING CURB
RAMP 'B' 59+00.0 RT ~ ROLAND CT. 29+35.64 LT
SLIP RAMP 80+00.0 RT ~ 81+55.89 RT
SLIP RAMP 81+62.23 RT ~ ROLAND CT. 29+52.23 LT
SAWCUT AND MATCH TO ADJACENT PANEL AT JOINT (TYP.)
385 EAST ALLEN STREET LLC
385 E. ALLEN ST.
NF LYONS, RICHARD & VIRGINIA
389 E. ALLEN ST.



LANDSCAPE (T)

MOORE CHARLES T. & JOANNE M.
361E. ALLEN ST.

REMOVE EXISTING TREES

INSTALL & MAINT(P)

25' LONG HEDGE LINE
8 DENSE SPREADING YEW @ 3' O.C.

NF SISTERS AND BROTHERS INVESTMENT GROUP, LP
363 E. ALLEN ST.

INSTALL & MAINT(P)

SAVE/TPZ EXISTING TREES

ROUTE 15 EXISTING TREES (EAST ALLEN STREET)

UTIL(T)

INSTALL & MAINT(P)

STATE OF VERMONT

EDGE CONC. PAVEMENT (REC)

PAVED

GRANITE CURB

4" B.S. L.P. (ABAND. -1993)

24" RCP

4" B.S. L.P. (ABAND. -1993)

4" DR. SCO. M.P. (1989)

4" B.S. L.P. (ABAND. -1993)

4" B.S. L.P. (ABAND. -1993)

4" B.S. L.P. (ABAND. -1993)

4" B.S. L.P. (ABAND. -1993)

4" B.S. L.P. (ABAND. -1993)

4" B.S. L.P. (ABAND. -1993)

4" B.S. L.P. (ABAND. -1993)

4" B.S. L.P. (ABAND. -1993)

4" B.S. L.P. (ABAND. -1993)

4" B.S. L.P. (ABAND. -1993)

4" B.S. L.P. (ABAND. -1993)

4" B.S. L.P. (ABAND. -1993)

4" B.S. L.P. (ABAND. -1993)

4" B.S. L.P. (ABAND. -1993)

4" B.S. L.P. (ABAND. -1993)

4" B.S. L.P. (ABAND. -1993)

4" B.S. L.P. (ABAND. -1993)

4" B.S. L.P. (ABAND. -1993)

4" B.S. L.P. (ABAND. -1993)

4" B.S. L.P. (ABAND. -1993)

4" B.S. L.P. (ABAND. -1993)

4" B.S. L.P. (ABAND. -1993)

4" B.S. L.P. (ABAND. -1993)

4" B.S. L.P. (ABAND. -1993)

4" B.S. L.P. (ABAND. -1993)

4" B.S. L.P. (ABAND. -1993)

4" B.S. L.P. (ABAND. -1993)

4" B.S. L.P. (ABAND. -1993)

4" B.S. L.P. (ABAND. -1993)

4" B.S. L.P. (ABAND. -1993)

4" B.S. L.P. (ABAND. -1993)

4" B.S. L.P. (ABAND. -1993)

4" B.S. L.P. (ABAND. -1993)

4" B.S. L.P. (ABAND. -1993)

4" B.S. L.P. (ABAND. -1993)

4" B.S. L.P. (ABAND. -1993)

4" B.S. L.P. (ABAND. -1993)

4" B.S. L.P. (ABAND. -1993)

4" B.S. L.P. (ABAND. -1993)

4" B.S. L.P. (ABAND. -1993)

4" B.S. L.P. (ABAND. -1993)

4" B.S. L.P. (ABAND. -1993)

4" B.S. L.P. (ABAND. -1993)

4" B.S. L.P. (ABAND. -1993)

4" B.S. L.P. (ABAND. -1993)

4" B.S. L.P. (ABAND. -1993)

4" B.S. L.P. (ABAND. -1993)

4" B.S. L.P. (ABAND. -1993)

4" B.S. L.P. (ABAND. -1993)

CURVE DATA
Δ = 67° 08' 36.62" RT. LOCUS
D = 29' 50' 30"
R = 192.00'
T = 127.43'
L = 225.00'
E = 38.44'
BANK = N/A

CURVE DATA
Δ = 6° 36' 43.65" RT.
D = 5° 43' 46"
R = 1000.00'
T = 57.77'
L = 115.40'
E = 1.67'

CONCRETE SIDEWALK RAMPS W/ DETECTABLE WARNING SURFACE

RAMP 'B' 59+57.8 LT (TYPE 1)
RAMP 'B' 59+58.0 RT (TYPE 1)
RAMP 'B' SLIP RAMP 81+54.9 LT (TYPE 1)
RAMP 'B' SLIP RAMP 81+59.1 RT (TYPE 2)
VT RTE 15 16+96.2 LT (MEDIAN ISLAND)
VT RTE 15 16+96.8 RT (MEDIAN ISLAND)
VT RTE 15 16+96.0 LT (TYPE 2)
VT RTE 15 16+97.4 RT (TYPE 2)
VT RTE 15 20+34.5 LT (TYPE 6)
ROLAND CT. 29+50.0 LT (TYPE 2)
ROLAND CT. 29+56.2 RT (TYPE 2)

MATCHLINE STA. 58+00

LIMITS OF FULL DEPTH EXCAVATION

FOR R.O.W. USE ONLY



PROJECT NAME: WINOOSKI
PROJECT NUMBER: NH 089-3(65)
FILE NAME: r94a198zzz.bdr
PROJECT LEADER: KEN UPMAL
DESIGNED BY: T. BIGELOW
ROW SHEET 5 OF 5
PLOT DATE: 23-FEB-2010
DRAWN BY: T. BIGELOW
CHECKED BY: E. ATKINS
SHEET 14 OF 67