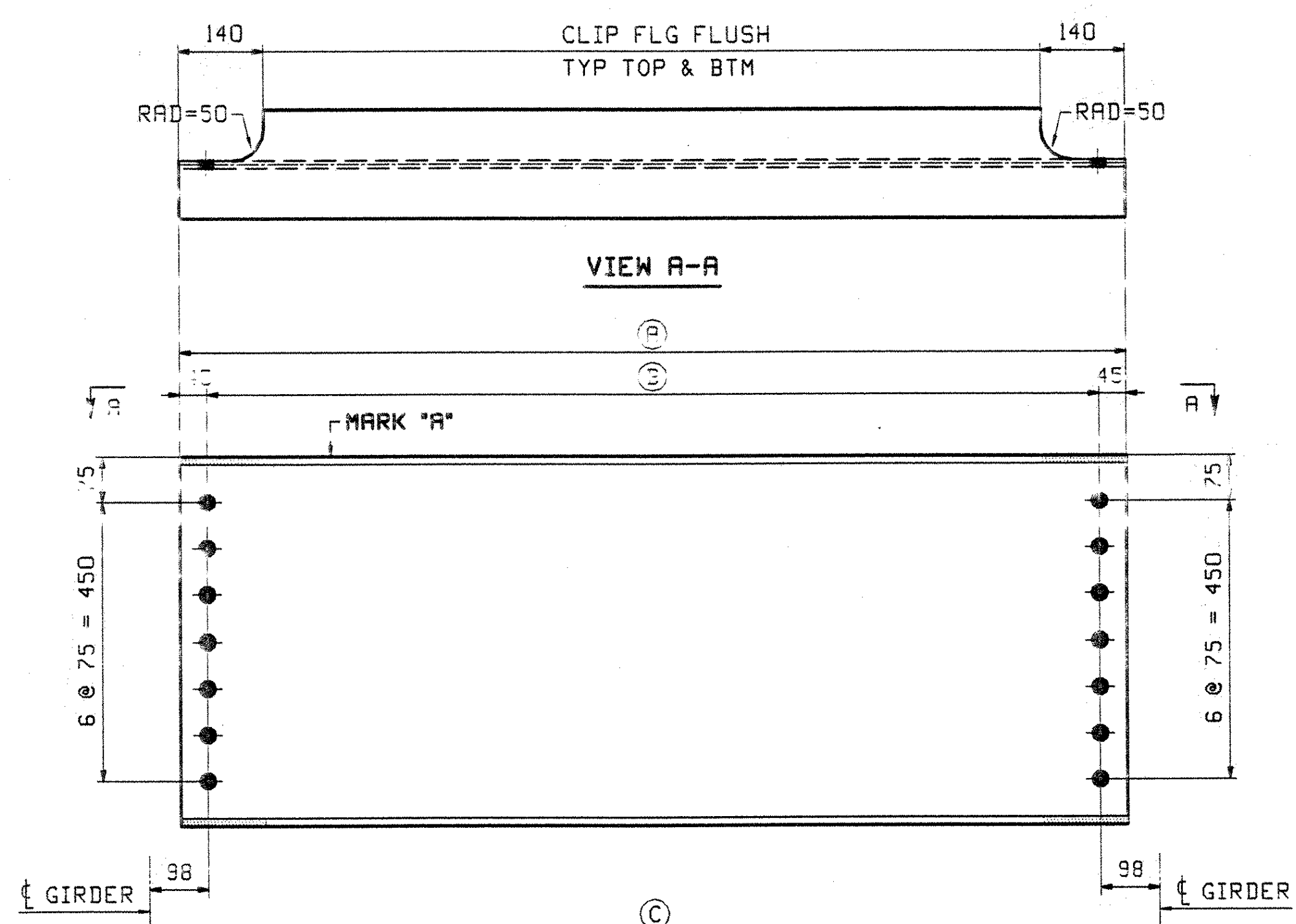
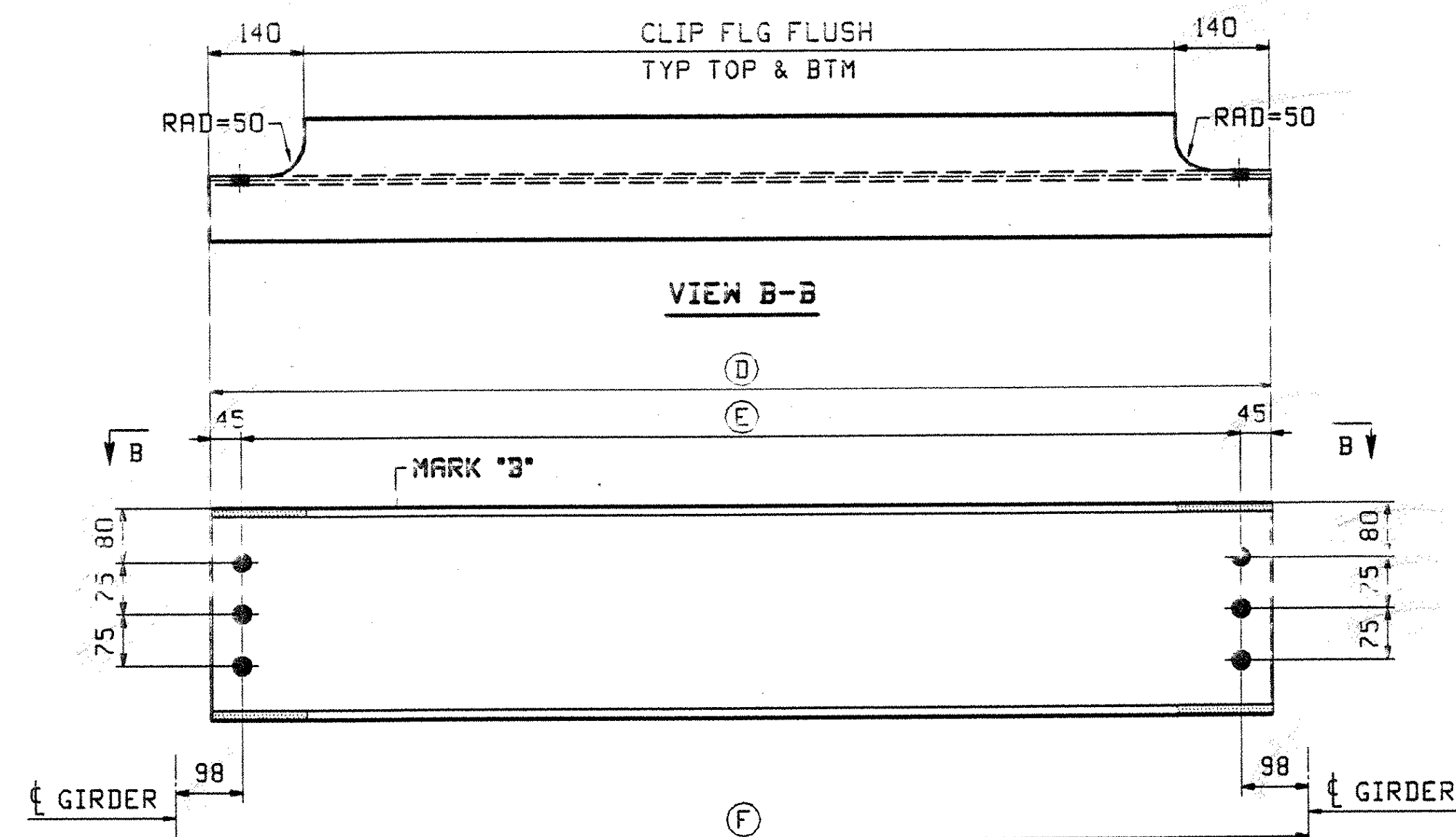


BILL OF MATERIAL		JOB NO.		DRAWING NO.		REV.			
PAGE	LINE	MARK	QTY	MARK	MATERIAL	LENGTH	REMARKS	WT	PROCUREMENT NOTES
INTERMEDIATE DIAPHRAGMS									
4	C	11D1	9		W 610x82	2 964		243 kg	
4	D	11D2	4		W 610x82	2 302		189 kg	
4	E	11D3	4		W 610x82	2 065		169 kg	
4	F	11D4	4		W 610x82	1 829		150 kg	
INT DIAPHRAGM									
4	L	11D5	1		W 410x39	1 435	1428	56 kg	
WATERLINE DIAPHRAGMS									
4	G	11D6	1		W 310x67	2 485		166 kg	
4	S	11D7	1		W 310x67	1 653		111 kg	
TELEPHONE DIAPHRAGMS									
4	T	11D8	1		W 310x67	2 648		177 kg	
4	T	11D9	1		W 310x67	2 338		157 kg	
4	T	11D10	1		W 310x67	2 101		141 kg	
4	T	11D11	1		W 310x67	1 864		125 kg	
4	T	11D12	1		W 310x67	1 554		104 kg	



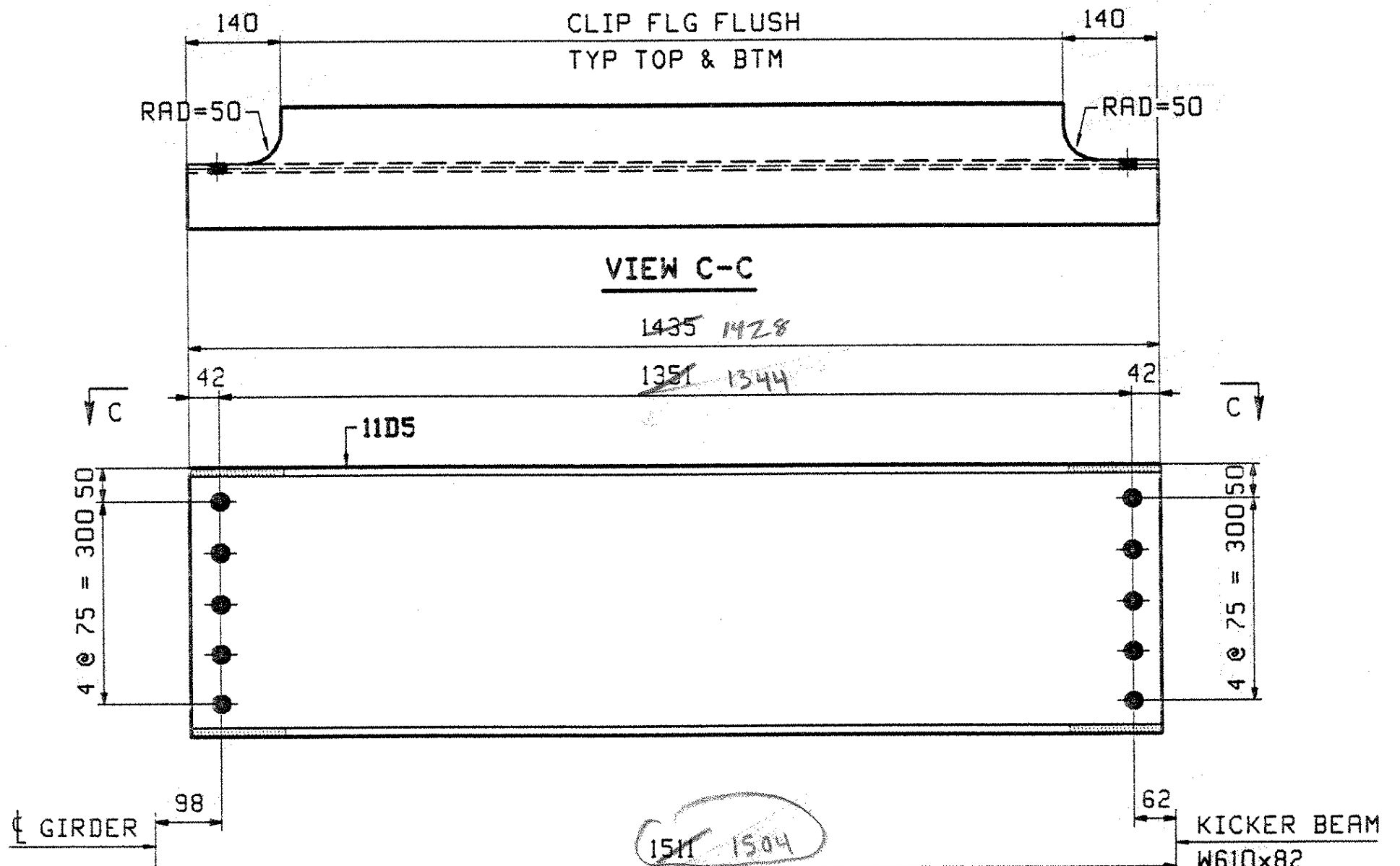
INTERMEDIATE DIAPHRAGM - MARK "A"

MARK "A"	QTY	(A)	(B)	(C)
11D1	9	2964	2874	3070
11D2	4	2302	2212	2408
11D3	4	2065	1975	2171
11D4	4	1829	1738	1934

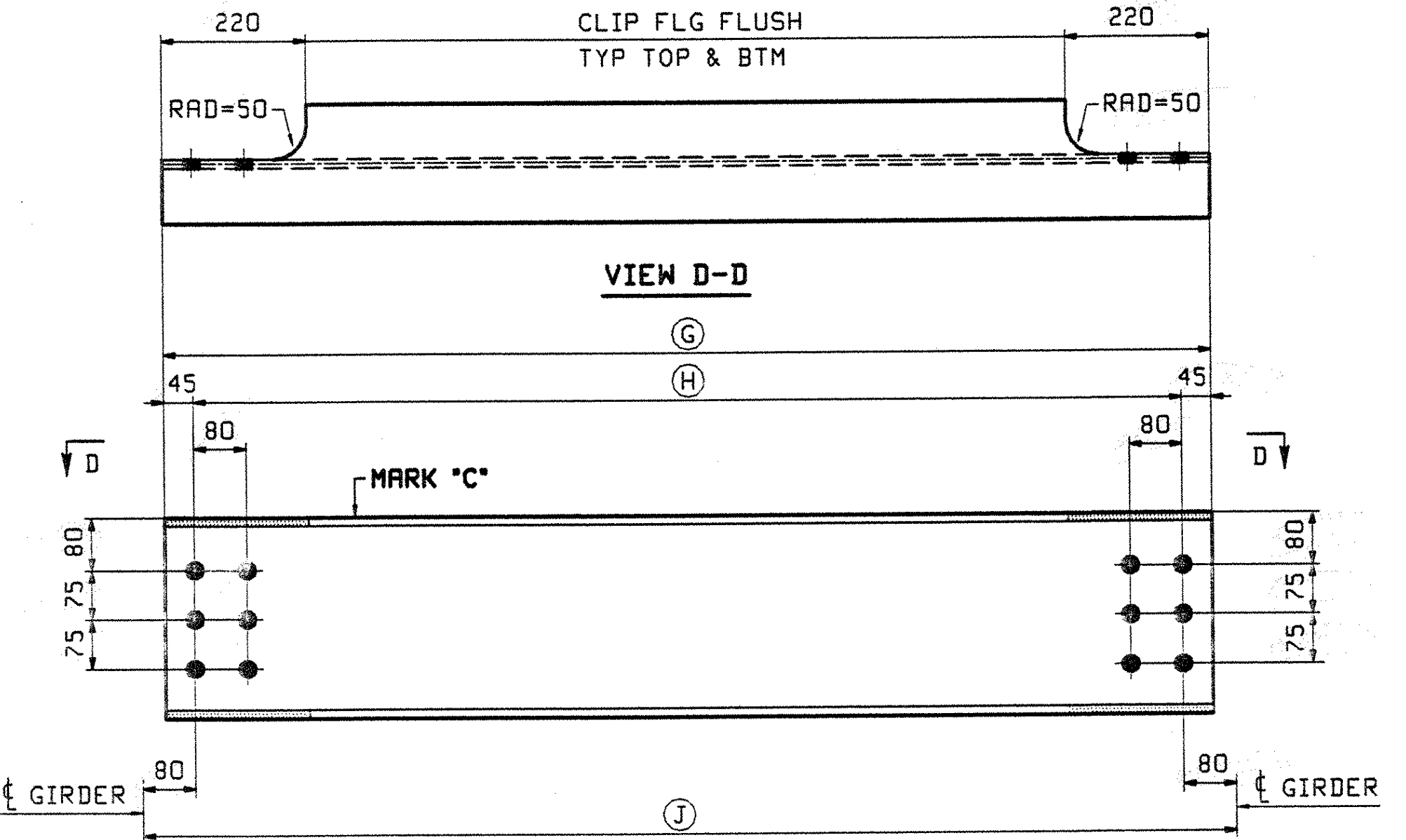


WATERLINE DIAPHRAGM - MARK "B"

MARK "B"	QTY	(D)	(E)	(F)
11D6	1	2485	2395	2591
11D7	1	1653	1563	1759



1 - INT DIAPHRAGM - 11D5  
AT KICKER BEAM



TELEPHONE DIAPHRAGM - MARK "C"

MARK "C"	QTY	(G)	(H)	(J)
11D8	1	2648	2558	2718
11D9	1	2338	2248	2408
11D10	1	2101	2011	2171
11D11	1	1864	1774	1934
11D12	1	1554	1464	1624

OUT FOR APPROVAL	4/15/03				
OUT FOR APPROVAL					
ISSUED TO SHOP					
FIELD & OFFICE					

REV.	REMARKS	DATE	DWN	CHK	APP	Q.A.	NO.	DIA.	LGT	TYPE	WASHER
	MATERIAL:	ELECTRODES:									SHOP BOLTS:
	M270M-345W										24mm (15/16)φ

SURFACE PREP. & PAINT:  
-ALL STEEL SHALL BE BLAST CLEANED AND LEFT UNPAINTED.

DESCRIPTION:	INTERMEDIATE DIAPHRAGM	DRAWN BY	DATE
JOB:	US 5 OVER WHETSTONE BROOK	JTB	03/21
	BRIDGE NO. 7	CHKD BY	
	BRATTLEBORO, VERMONT (WINDHAM COUNTY)	EPE	04/07
	CONTRACTOR: RENAUD BROTHERS	APPROV BY	
		SUPERVISOR	M. J. GATTI

PROJ NO.	BHF 2000(17)	Q.A.	
CUSTOMER:	VERMONT AGENCY OF TRANSPORTATION	DRG. NO.	10/
<b>CASCO BAY STEEL STRUCTURES, INC.</b>		JOB NO.	194
75 SPRING HILL ROAD	SACO, MAINE 04072	DRG. NO.	11
PHONE (207) 282-7360	FAX. (207) 282-1179	REV.	△

V.A.O.T.  
RECEIVED  
APR 15 2003  
RESUBMIT APPROVED AC NOTED