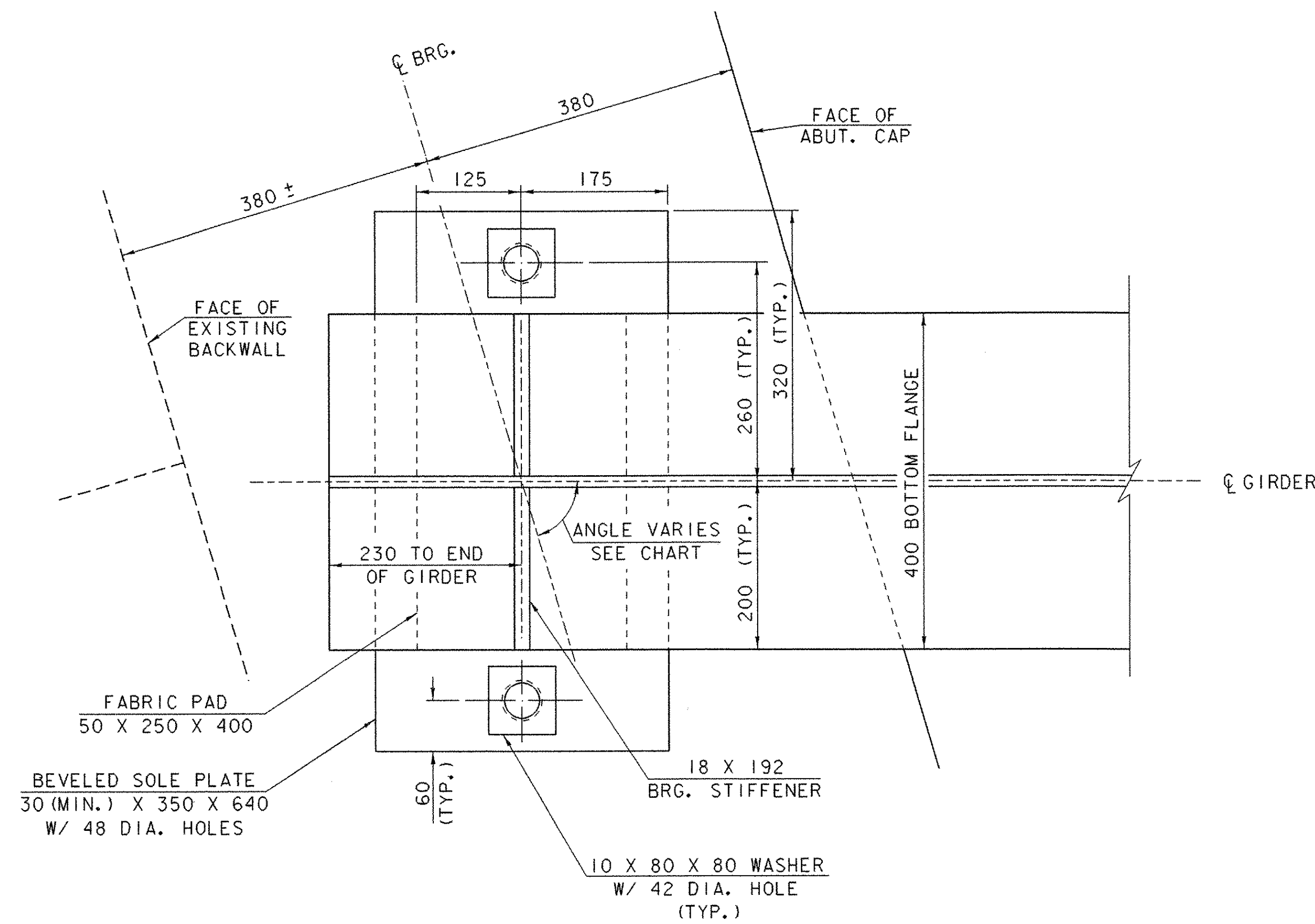


### ABUTMENT BEARING NOTES

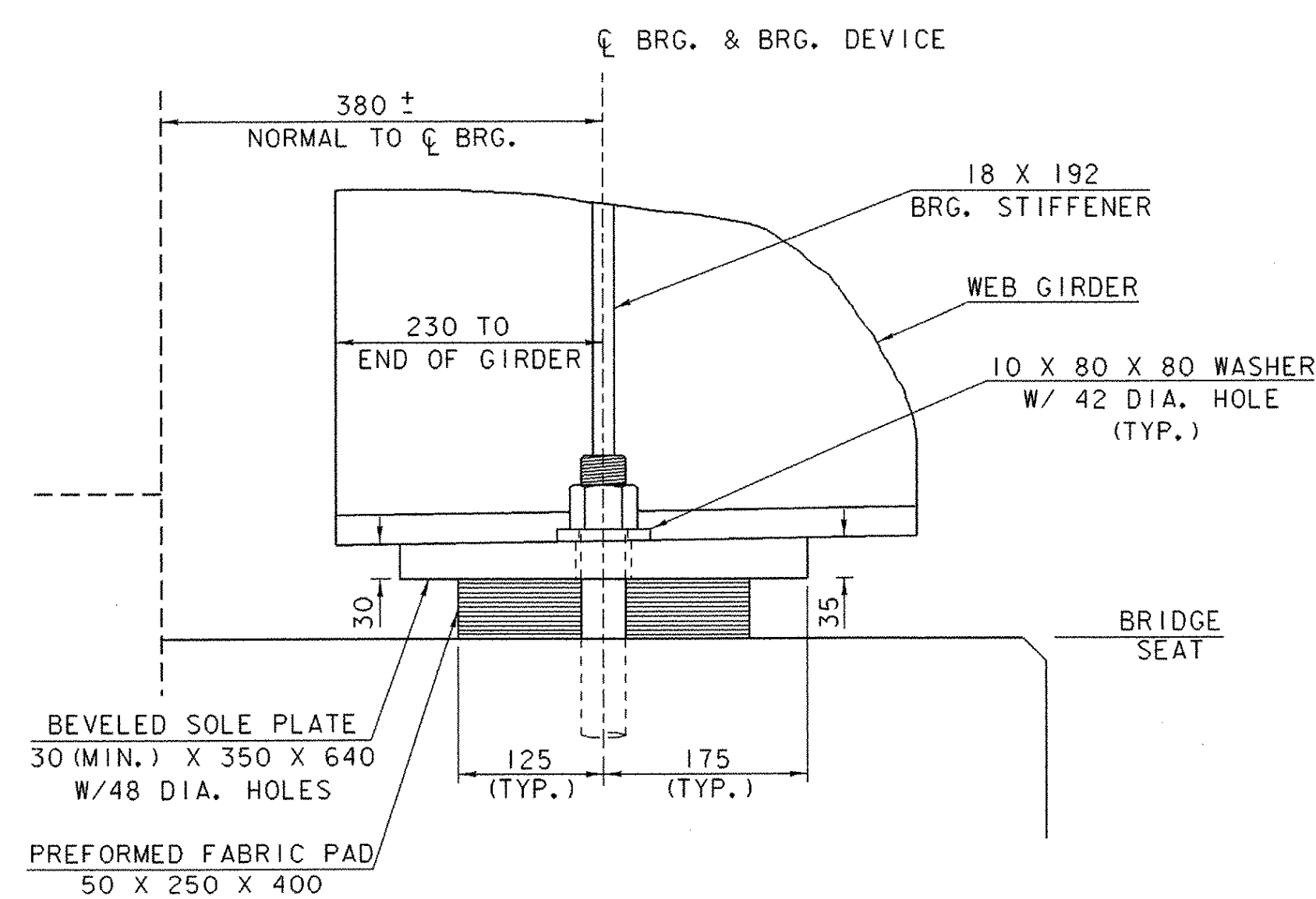
- BEARINGS SHALL CONFORM TO THE APPLICABLE PROVISIONS OF SECTIONS 531 AND 731 OF THE STANDARD SPECIFICATIONS.
- BEARINGS SHALL BE PAID FOR UNDER ITEM 531.10 "BEARING DEVICE ASSEMBLY".
- SHOP DRAWINGS SHALL BE SUBMITTED AS PER STANDARD SPECIFICATION 531.03. THE SUBMITTAL SHALL INCLUDE ASSOCIATED WELDING AND BONDING PROCEDURES.
- DESIGN CRITERIA:
  - DESIGN FABRIC PAD TO CONCRETE PRESSURE: 6.9 MPa MAXIMUM
  - DESIGN ROTATION: 0.015 RADIAN MINIMUM
  - DESIGN VERTICAL LOAD: 679 kN
  - DESIGN HORIZONTAL LOAD: MINIMUM 10% OF VERTICAL LOAD
- THE "B" DISTANCE IS THE FINAL SETTING FOR THE BEARING PAD AFTER THE CONCRETE SLAB, CURB, PAVEMENT AND BRIDGE RAIL HAVE BEEN PLACED. THE "A" DISTANCE IS FOR SETTING THE BEARING AFTER THE STRUCTURAL STEEL IS ERECTED AND BEFORE THE CONCRETE DECK IS POURED. THE DIFFERENCE IS THE THEORETICAL ELONGATION OF THE BOTTOM FLANGE DUE TO DEAD LOAD DEFLECTION. THE FINAL "B" DISTANCE SHOWN IN THE TABLE MUST BE ATTAINED WITHIN 3 mm.
- THE CONCRETE SURFACE UNDER THE BEARING DEVICE SHALL BE LEVEL.
- ANCHOR BOLTS SHALL HAVE A MINIMUM 380 mm EMBEDMENT INTO THE CONCRETE AND SHALL CONFORM TO STANDARD SPECIFICATION 714.08.
- ALL STEEL IN BEARING DEVICES (EXCEPT STAINLESS STEEL) SHALL BE AASHTO M270/270M, GRADE 250.
- ALL BEARING DEVICES SHALL BE GALVANIZED OR METALIZED AS PER STANDARD SPECIFICATIONS 506.15 AND 531.04 (b), AS MODIFIED BY THE GENERAL SPECIAL PROVISIONS. IF THE BEARINGS ARE METALIZED, THEY SHALL BE SEALED WITH AN APPROVED SEALER AS SPECIFIED IN GENERAL SPECIAL PROVISION 506.15. AREAS OF GALVANIZING OR METALIZING DAMAGED BY FIELD WELDING OR HANDLING SHALL BE REPAIRED IN CONFORMANCE WITH SUPPLEMENTAL SPECIFICATION 513.
- ALL ANCHOR BOLTS, NUTS AND WASHERS SHALL BE GALVANIZED. ALL WASHERS SHALL BE 10 mm PLATE MINIMUM. PAYMENT FOR ANCHOR BOLTS, NUTS, WASHERS AND THEIR INSTALLATIONS SHALL BE INCLUDED IN THE UNIT PRICE BID FOR ITEM 531.10, "BEARING DEVICE ASSEMBLY".

ABUTMENT NO. 1 BEARING ANGLE TABLE

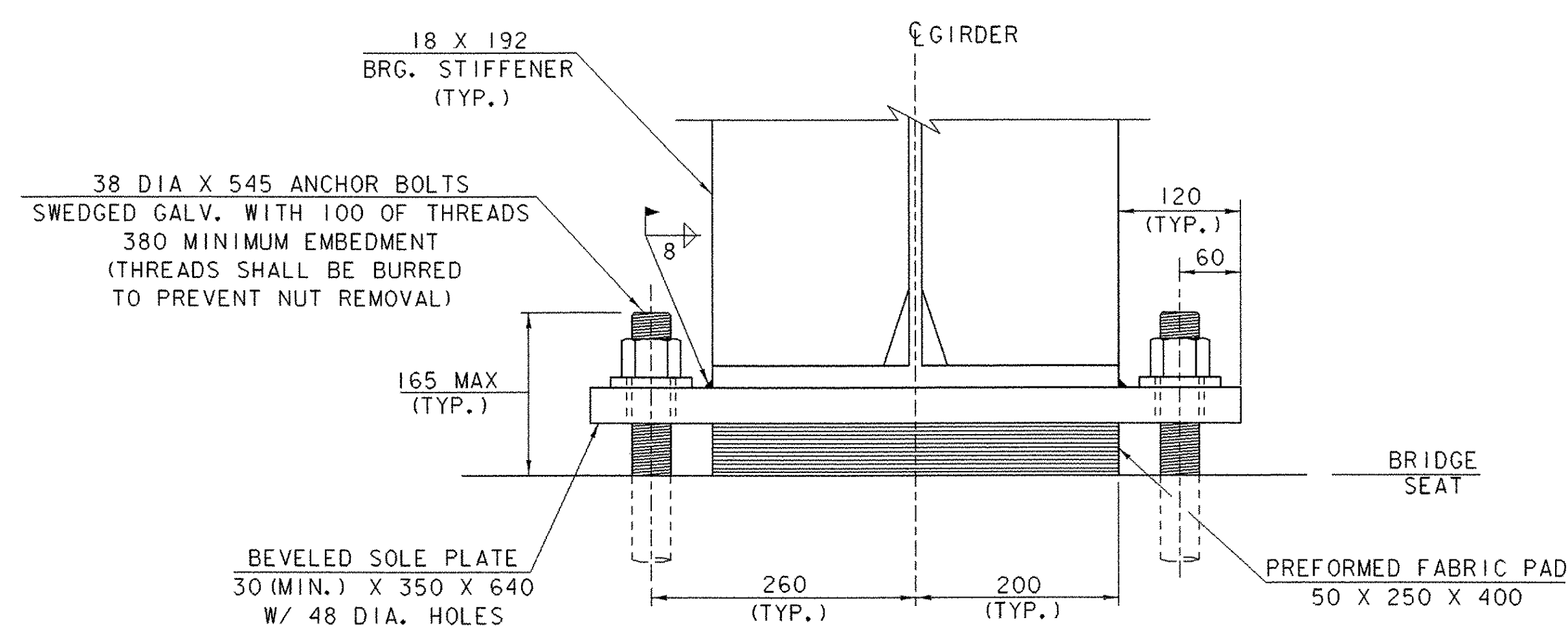
GIRDER NO.	ANGLE
NO. 1	73°30' 15"
NO. 2	76°40' 36"
NO. 3	79°55' 42"
NO. 4	83°14' 49"
NO. 5	86°36' 42"
NO. 6	90°00' 00"
NO. 7	90°00' 00"
NO. 8	90°00' 00"
NO. 9	90°00' 00"



PLAN VIEW

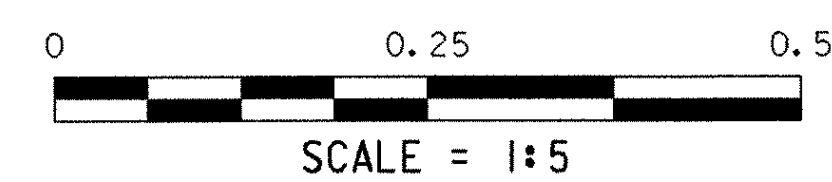


SIDE VIEW



FRONT VIEW

### FIXED BEARING DETAILS ABUTMENT NO. 1



PROJECT NAME:	BRATTLEBORO	PLOT DATE:	06-FEB-2003
PROJECT NUMBER:	BHF 2000 (17)	DRAWN BY:	B. MAURICE
FILE NAME:	94J078\Structures\sj078fbd.1	DESIGNED BY:	T. SUMNER
PROJECT MANAGER:	R. R. WHITCOMB	CHECKED BY:	T. SUMNER
		SHEET 44 OF 71	