

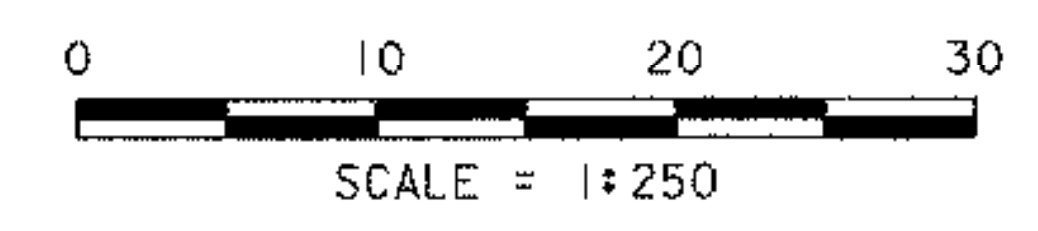
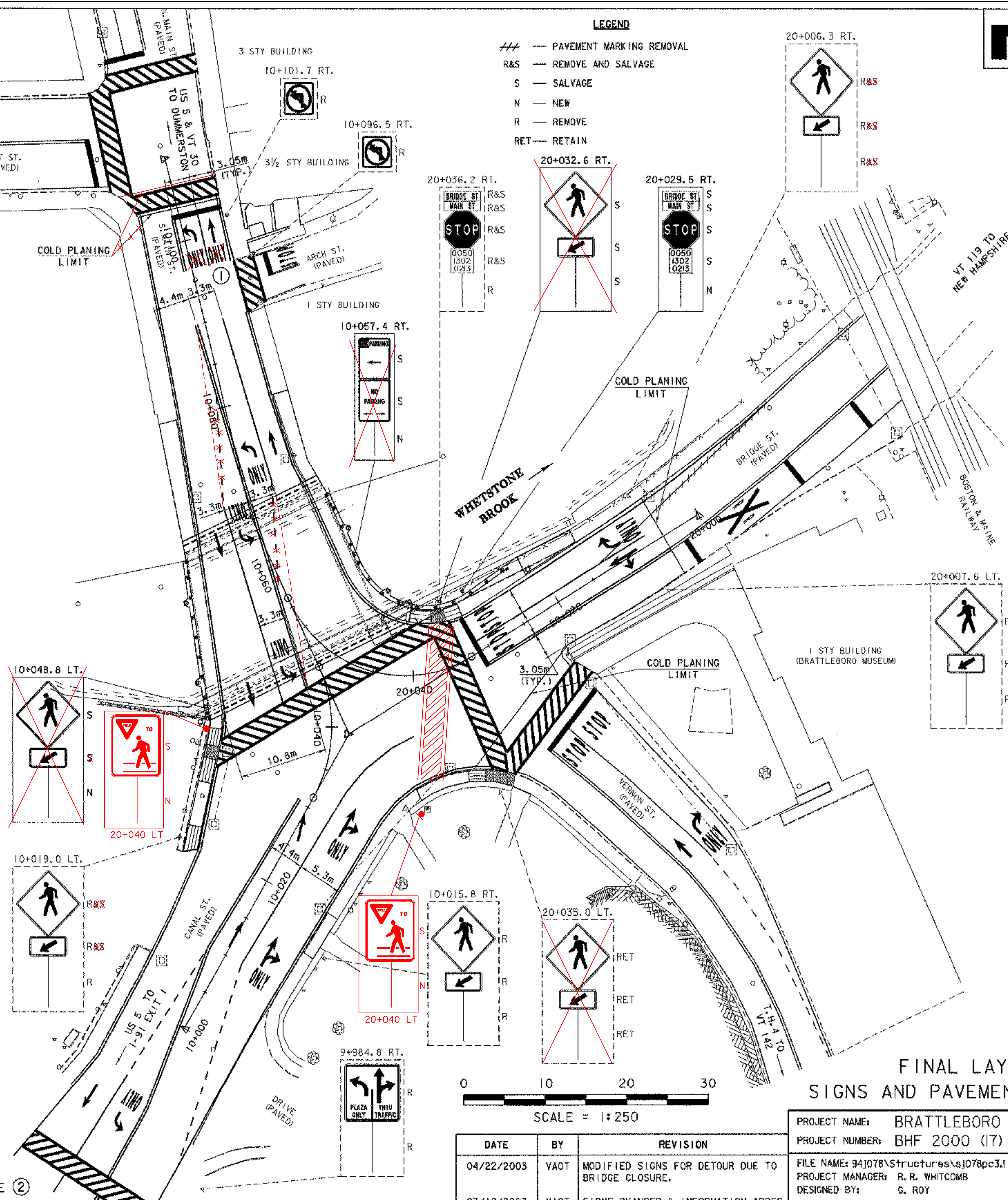
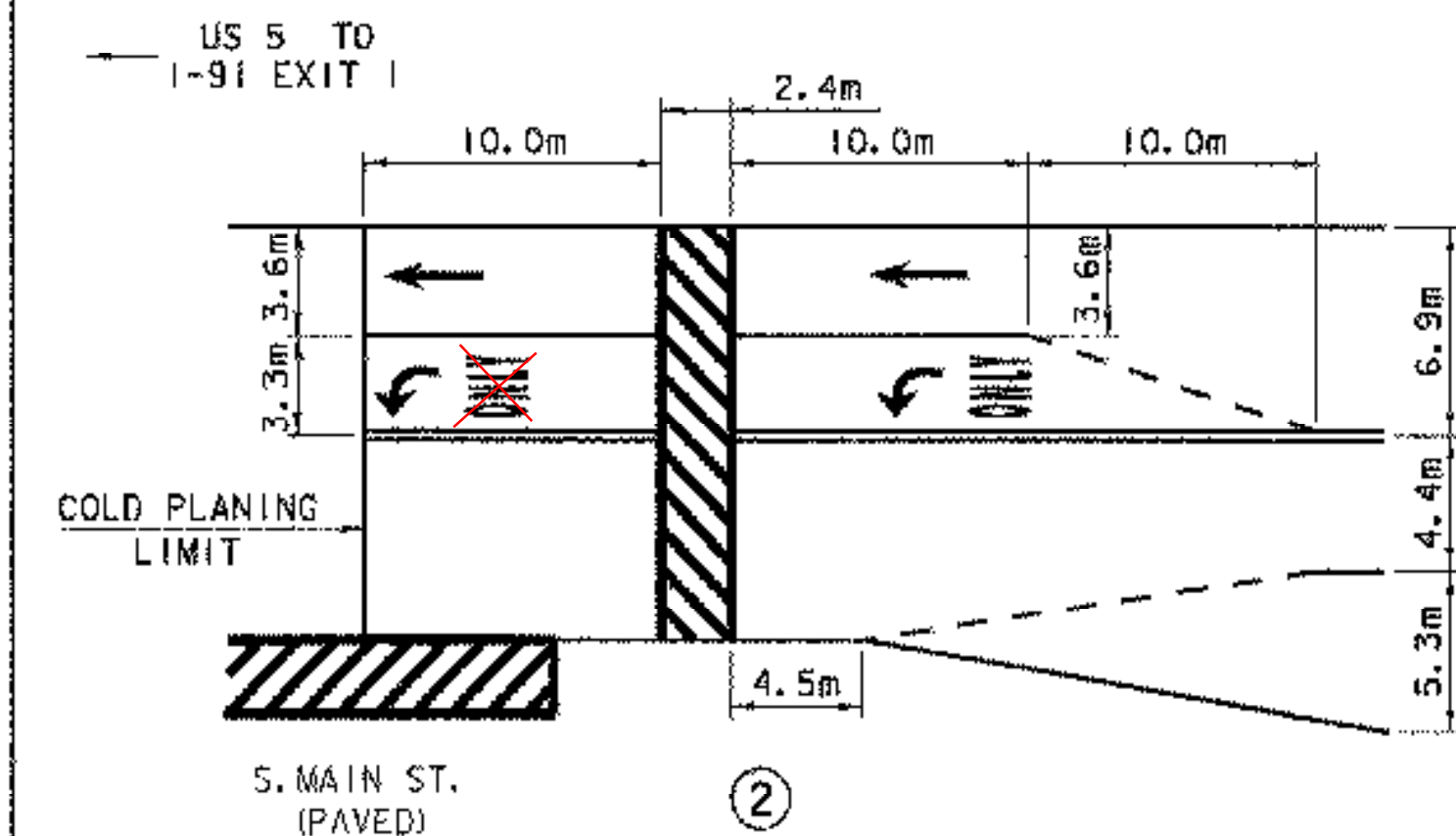
- LEGEND**
- ## --- PAVEMENT MARKING REMOVAL
  - R&S --- REMOVE AND SALVAGE
  - S --- SALVAGE
  - N --- NEW
  - R --- REMOVE
  - RET --- RETAIN

**REMOVAL OF EXISTING PAVEMENT MARKINGS**  
 19+986.1 RT. - 20+005.0 RT. TEMP. EDGE LINE

- DURABLE 100mm WHITE LINE**
- 9+980.0 LT. - 10+028.7 LT. EDGE LINE
  - 9+980.0 LT. - 9+990.7 LT. TRAVEL LANE
  - 9+990.7 LT. - 10+009.6 LT. DOTTED LINE
  - 9+985.5 RT. - 10+010.0 RT. DOTTED LINE
  - 10+010.0 RT. - 10+036.7 RT. TRAVEL LANE
  - 9+980.0 RT. - 20+035.4 LT. EDGE LINE
  - 10+035.3 LT. - 10+104.5 LT. EDGE LINE
  - 10+044.6 LT. - 10+068.7 LT. TRAVEL LANE
  - +046 10+057.3 LT. - 10+070.4 RT. DOTTED LINE
  - 10+068.7 LT. - 10+081.6 LT. DOTTED LINE +090
  - 10+070.4 RT. - 10+090.0 RT. TRAVEL LANE
  - 20+003 19+986.1 RT. - 20+034.1 RT. EDGE LANE
  - 20+003 20+007.0 RT. - 20+031.9 RT. TRAVEL LANE
  - 20+041.0 RT. - 10+090.0 RT. EDGE LANE
  - ① S. MAIN ST. 6.2m TRAVEL LANE
  - ① S. MAIN ST. 6.2m EDGE LANE
  - ② CANAL ST. 10.0m TRAVEL LANE
  - ② CANAL ST. 10.0m EDGE LANE
  - 20+003 - 20+021 LT. EDGELINE
- DURABLE 100mm YELLOW LINE**
- 9+980.0 RT. - 10+030.3 LT. (DOUBLE)
  - 10+045.7 LT. - 10+090.0 LT. (DOUBLE)
  - +003 20+005.0 LT. - 20+031.6 LT. (DOUBLE)
  - ① S. MAIN ST. 6.2m (DOUBLE)
  - ② CANAL ST. 10.0m (DOUBLE)
- DURABLE 600mm STOP BAR**
- 20+031.3 LT. - 20+031.3 RT.
  - ① S. MAIN ST. 6.2m
- DURABLE CROSSWALK WITH DIAGONAL LINES**
- 10+028.4 LT. - 10+047.0 RT.
  - 039 20+033.6 LT. - 20+036.2 RT.
  - ④ CANAL ST. 17m
  - 10+105 LT - RT
- REMOVING SIGNS**
- 9+984.8 RT. (1 EA.)
  - 10+015.8 RT. (2 EA.)
  - 10+019.0 LT. (2 EA.)
  - 10+096.5 RT. (1 EA.)
  - 10+101.7 RT. (1 EA.)
  - 20+006.3 RT. (2 EA.)
  - 20+007.6 LT. (2 EA.)
  - 20+036.2 RT. (4 EA.)

- DURABLE LETTERS OR SYMBOLS**
- 10+009.7 RT.
  - 10+027.6 RT.
  - 10+051.2 LT.
  - 10+067.8 LT.
  - 10+071.4 RT.
  - 20+006.3 RT.
  - ① S. MAIN ST. (2 EA.)
  - ② CANAL ST. (2 EA.)
  - 10+012.8 CL.
  - 10+027.6 RT.
  - 10+048.3 LT.
  - 10+065.4 LT.
  - 10+074.0 RT.
  - ① S. MAIN ST.
  - ② CANAL ST. (2 EA.)
  - 10+013.0 RT.
  - 10+030.8 RT.
  - 20+011.3 CL.
  - 20+028.6 RT.
  - 20+028.6 CL.
- ERECTING SALVAGED SIGNS**
- 10+048.8 LT. (2 EA.)
  - 10+057.4 RT. (2 EA.)
  - 20+029.5 RT. (4 EA.)
  - 20+032.6 RT. (2 EA.)
- SETTING SALVAGED POSTS**
- 20+032.6 RT. (1 EA.)

**NOTE!**  
 SEE COLD PLANING LIMITS  
 ON SHEET 59 BEFORE PLACING  
 DURABLE PAVEMENT MARKINGS.



**FINAL LAYOUT  
 SIGNS AND PAVEMENT MARKINGS**

|  |  |   |  |
|--|--|---|--|
| PROJECT NAME: BRATTLEBORO                                  |  | PROJECT NUMBER: BHF 2000 (17)           |  |
| DATE: 04/22/2003   |  | FILE NAME: 94J078\Structures\sj078pc3.1 |  |
| BY: VAOT   |  | PROJECT MANAGER: R. R. WHITCOMB         |  |
| REVISION: MODIFIED SIGNS FOR DETOUR DUE TO BRIDGE CLOSURE. |  | DESIGNED BY: G. ROY                     |  |
| DATE: 03/10/2003   |  | PLOT DATE: 24-MAY-2004                  |  |
| BY: VAOT   |  | CHECKED BY: T. SUMNER                   |  |
| REVISION: SIGNS CHANGED & INFORMATION ADDED.               |  | SHEET 15 OF 71                          |  |