

GPS CONTROL POINTS

RIVERVIEW

STATION MARK IS A SURVEY DISK SET ONTO A BRIDGE ABUTMENT. THE MARK IS STAMPED RIVERVIEW 1996.

APPROX. LATITUDE: 425105 N
 APPROX. LONGITUDE: 0723325 W
 APPROX. ELEVATION: 235 FT

LOCATION:
 BRATTLEBORO, VT

TO REACH FROM THE JUNCTION OF VT ROUTE 9 AND VT ROUTE 119 IN BRATTLEBORO, PROCEED EASTERLY ALONG VT ROUTE 119 FOR 0.10 MI (0.16 KM) TO A BRIDGE OVER THE CONNECTICUT RIVER AND THE MARK IS ON THE LEFT. THE MARK IS SET ON THE NORTH SIDE OF THE WESTERLY ABUTMENT BEFORE THE WOODEN WALK. IT IS 14.4 FT (4.4 M) NNW OF THE CENTERLINE OF VT ROUTE 119, 14.4 FT (4.4 M) ENE OF POLE 172 AND 8.4 FT (2.6 M) SSE OF THE SOUTHEAST CORNER OF A BUILDING (RIVERVIEW RESTAURANT).

NORMS MARINA

STATION MARK IS A SURVEY DISK SURROUNDED BY A MASS OF CONCRETE. THE MARK IS STAMPED NORMS MARINA 1996.

APPROX. LATITUDE: 425052 N
 APPROX. LONGITUDE: 0723257 W
 APPROX. ELEVATION: 200 FT

LOCATION:
 HINESDALE, NH

TO REACH FROM THE JUNCTION OF VT ROUTE 9 AND VT ROUTE 119 IN BRATTLEBORO, PROCEED EASTERLY ALONG VT ROUTE 119 CROSSING OVER THE CONNECTICUT RIVER FOR 0.5 MI (0.8 KM). TURN RIGHT AT NORMS MARINA AND PROCEED SOUTHERLY, TO THE RIGHT OF AN AUTO BODY SHOP AND ALONG THE CONNECTICUT RIVER TO THE MARK ON THE RIGHT. THE MARK IS SET IN THE TOP OF THE NORTHWEST CORNER OF A 4 FT (1.2 M) X 4 FT (1.2 M) X 4 FT (1.2 M) CONCRETE MASS FOR BOAT DOCKS. IT IS THE SECOND CONCRETE PAD SOUTH OF A PAVED BOAT LAUNCH. IT IS LOCATED 42 FT (12.8 M) SOUTH OF A 18 INCH MAPLE AND 33 FT (10.1 M) NORHTWEST OF A 12 INCH WHITE BIRCH.

K51

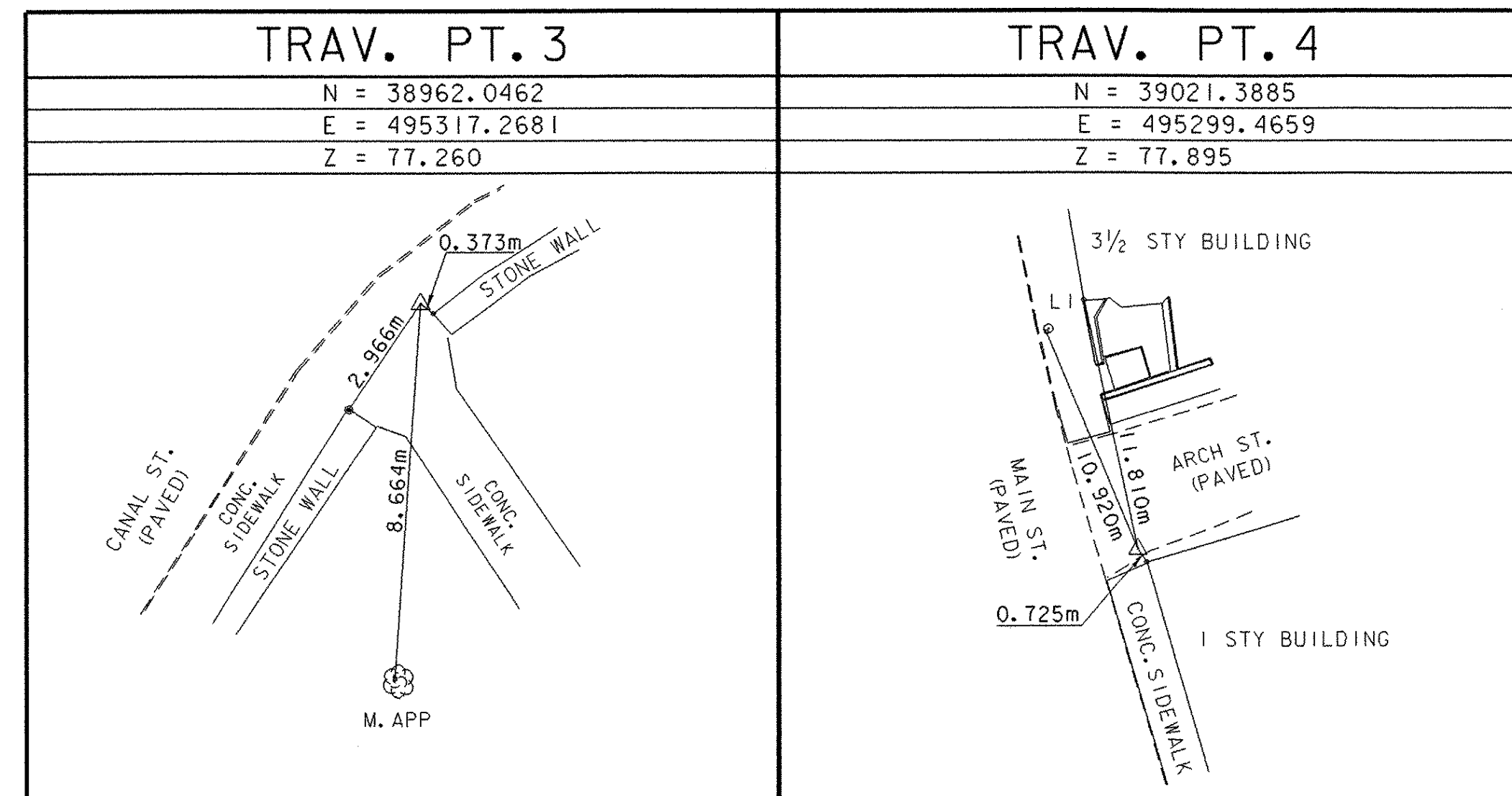
STATION MARK IS A SURVEY DISK SET ONTO CONCRETE RETAINING WALL. THE MARK IS STAMPED NORMS K51.

NORTHING: 38975.346
 EASTING: 495265.874
 ELEVATION: 78.230 m

LOCATION:
 BRATTLEBORO, VT

THE MARK IS 37 M (121.4 FT) NORTHWEST OF THE INTERSECTION OF U.S. ROUTE 5 AND VT ROUTES 119 AND 142, SET IN THE TOP OF A CONCRETE RETAINING WALL AT THE NORTH EDGE OF A PARKING LOT FOR THE BROOKSIDE PLAZA SHOPPING CENTER. IT IS 8.8 M (28.9 FT) WEST OF POLE NO. 1 B (WITH LUMEN), 27.6 M (90.6 FT) WEST OF THE SOUTHWEST CORNER OF THE U.S. ROUTE 5 BRIDGE OVER WHETSTONE BROOK, 0.5 M (1.6 FT) SOUTH OF THE WEST END OF A WROUGHT IRON FENCE, AND 0.3 M (1.0 FT) HIGHER THAN THE PARKING LOT. NOTE--PART OF THE RETAINING WALL NEAR THE MARK IS SEVERELY CRACKED.

TRAVERSE TIES



ALIGNMENT TIES

ML 1 POB	ML 1 PC	ML 1 PT	ML 1 PI	ML 1 POE
STA. 10+000.000	STA. 10+031.350	STA. 10+047.268	STA. 10+066.745	STA. 10+110.000
N = 38936.3120	N = 38963.3628	N = 38978.6475	N = 38996.2600	N = 39038.2019
E = 495290.0660	E = 495305.9121	E = 495306.5910	E = 495298.2750	E = 495287.6988
ML 2 POB	ML 2 PC	ML 2 PT		
STA. 20+000.000	STA. 20+032.437	STA. 20+058.986		
N = 38996.5690	N = 38979.8678	N = 38986.7062		
E = 495353.1470	E = 495325.3390	E = 495302.7856		

TIE SHEET

PROJECT NAME: BRATTLEBORO	
PROJECT NUMBER: BHF 2000 (17)	
FILE NAME: 94j078\Structures\sj078tie.1	PLOT DATE: 06-FEB-2003
PROJECT MANAGER: R. R. WHITCOMB	DRAWN BY: G. ROY
DESIGNED BY: G. ROY	CHECKED BY: T. SUMNER
	SHEET 8 OF 71