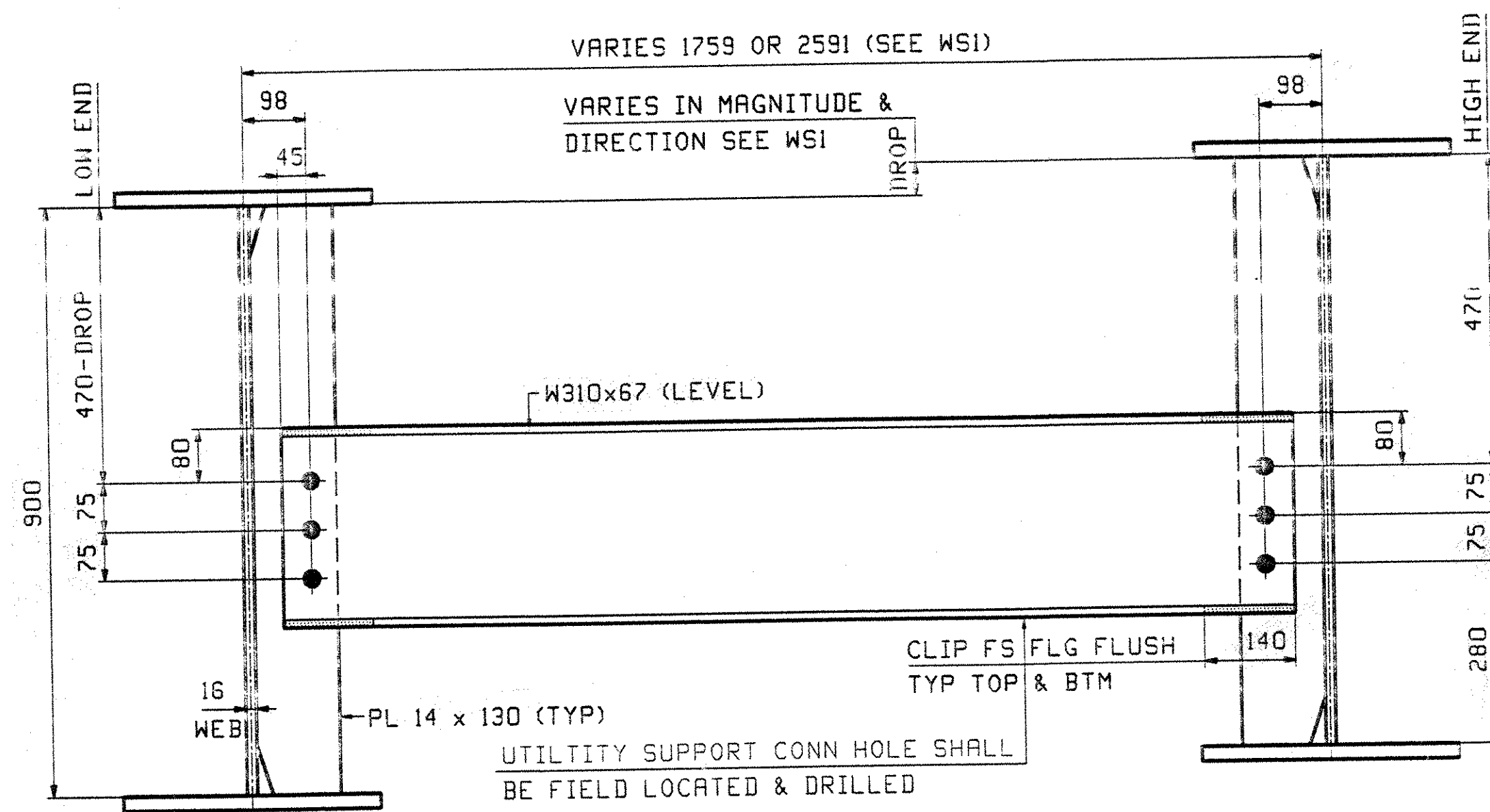


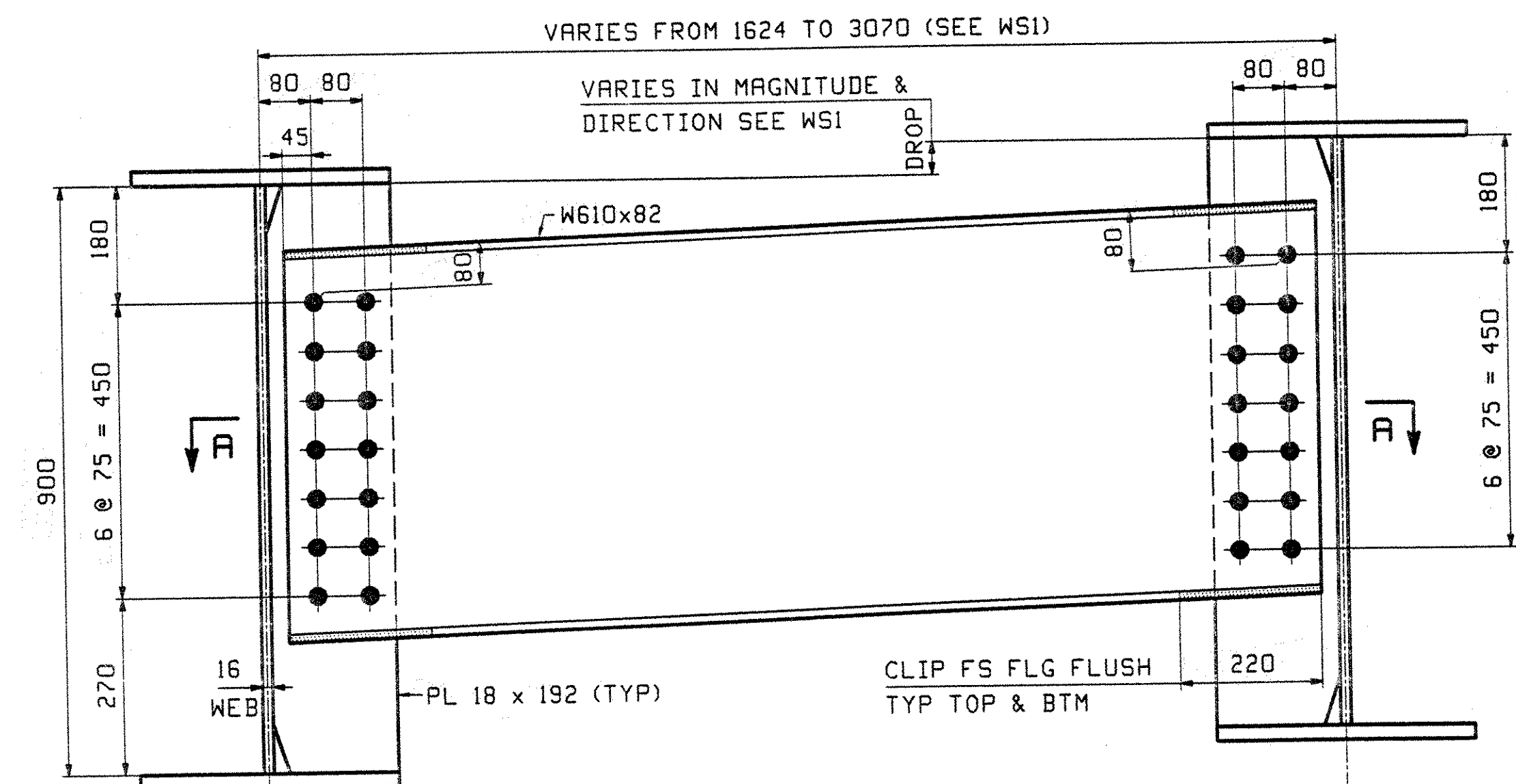
INTERMEDIATE DIAPHRAGM - TYPE D1

LOOKING UPSTATION



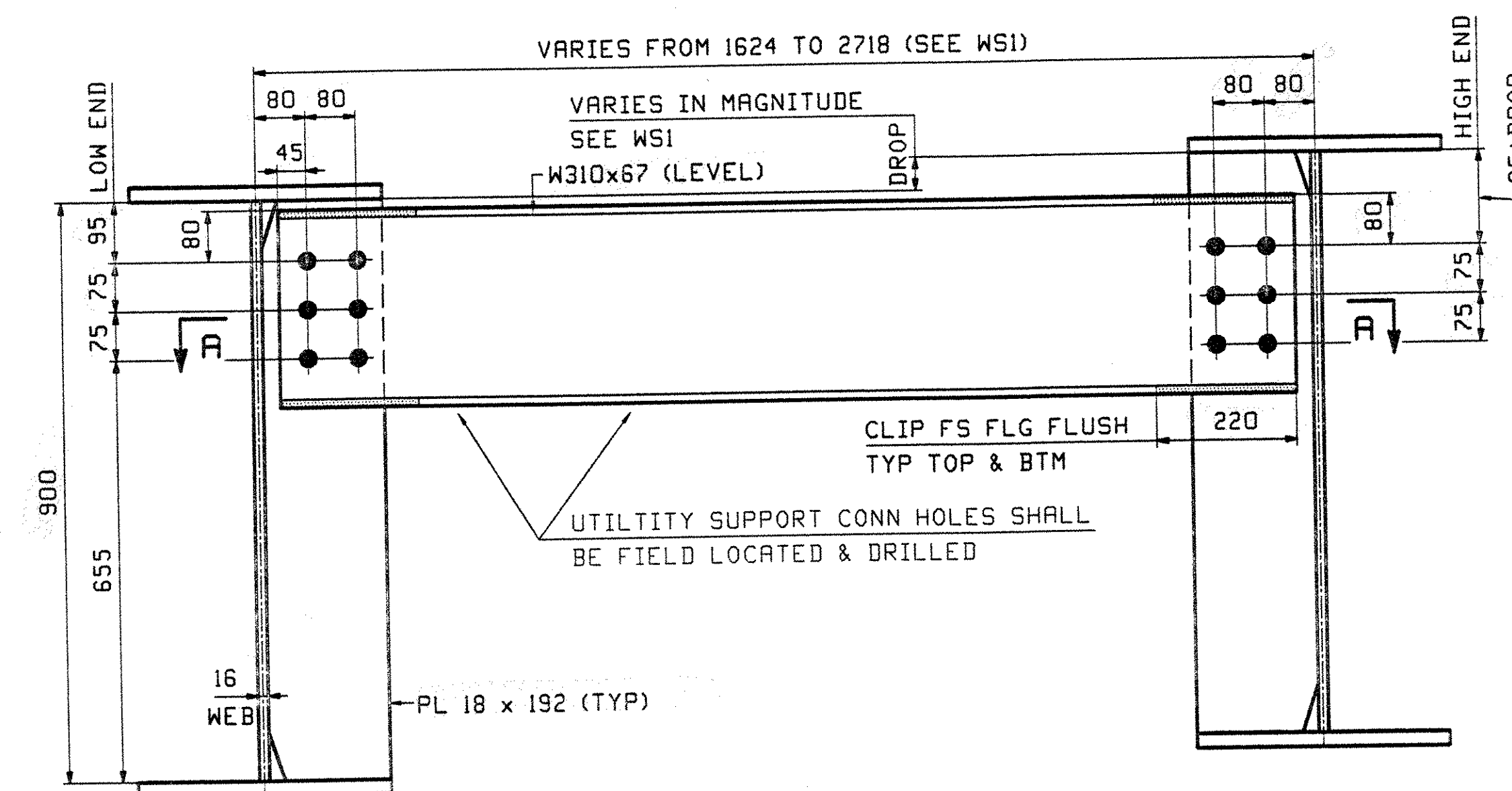
WATERLINE DIAPHRAGM - TYPE D3

DETAILER NOTE:
ADDITIONAL WATERLINE CONNECTION PLATES ARE
REQUIRED BETWEEN LINES 4-5 2280mm FROM ABUT 2 (REF 37 OF 71)



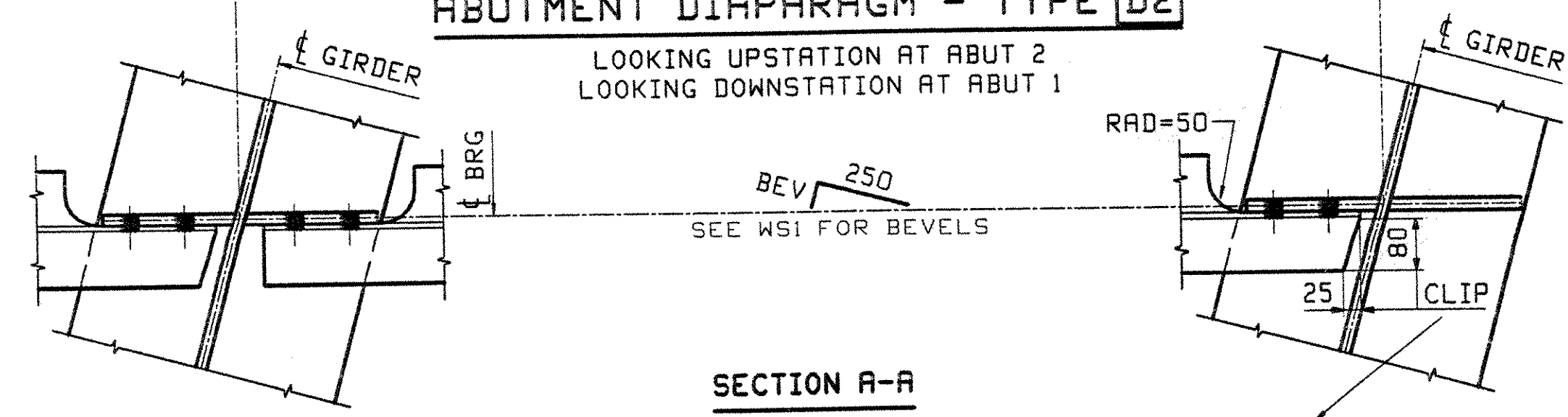
ABUTMENT DIAPHRAGM - TYPE D2

LOOKING UPSTATION AT ABUT 2
LOOKING DOWNSTATION AT ABUT 1



TELEPHONE DIAPHRAGM - TYPE D4

LOOKING UPSTATION BETWEEN LINES 1 & 2
LOOKING DOWNSTATION AT ABUT 1



SECTION A-A

CLIP NOTE:
CLIP TOP & BTM FLG AT LINES 1 THRU 5 - ABUT 1
CLIP TOP & BTM FLG AT LINES 2 THRU 6 - ABUT 2
(ACUTE ANGLE SIDE ONLY)

DETAILER NOTE:
LINES 1, 9 & THE KICKER BEAM HAVE 1 DRIP PLATE EACH

**** NOTE ****
THE PURPOSE OF THIS DRAWING IS TO COORDINATE GEOMETRIC CONTROL INFORMATION AND CONNECTION SPACING. THIS DWG IS SUBMITTED FOR INFORMATION ONLY & IS NOT INTENDED FOR SHOP FABRICATION. DETAIL DWGS WILL SHOW ALL WELDING AND DIMENSIONS REQ'D FOR FABRICATION.

OUT FOR APPROVAL	4-14-03																		
ISSUED TO SHOP																			
FIELD & OFFICE																			
REV.	REMARKS	DATE	DWN	CHK	APP	Q.A.	NO.	DIA.	LGT	TYPE	WASHER								
MATERIAL:	M270M-345W	ELECTRODES:										HOLES:	24mm (15/16")Ø	SHOP BOLTS:					
SURFACE PREP. & PAINT:																			
-ALL STEEL SHALL BE BLAST CLEANED AND LEFT UNPAINTED.																			
DESCRIPTION:	LAYOUTS	DRAWN BY	DATE																
JOB:	US 5 OVER WHESTONE BROOK	JTB	03/18																
	BRIDGE NO. 7	CHKD BY																	
	BRATTLEBORO, VERMONT (WINDHAM COUNTY)	WMJ	03/19																
	CONTRACTOR: RENAUD BROTHERS	APPROV BY																	
		SUPERVISOR	H. J. GATTI																
PROJ NO.	BHF 2000(17)	Q.A.																	
CUSTOMER:	VERMONT AGENCY OF TRANSPORTATION																		
CASCO BAY STEEL STRUCTURES, INC.		JOB NO.	085																
75 SPRING HILL ROAD	SACO, MAINE 04072	194	TD1																
PHONE (207) 282-7360	FAX. (207) 282-1179	REV.	△																

V.A.O.T.
RECEIVED
OK'D BY S.S.S. ON'D BY J.M.G.
4/16/03
APR 15 2003
RESUBMIT APPROVED X
BY DATE

NOTES:
1. ALL MATERIAL TO BE M270 GR345W.
2. SHOP BOLTS TO BE 7/8"Ø A325 TYPE 3.