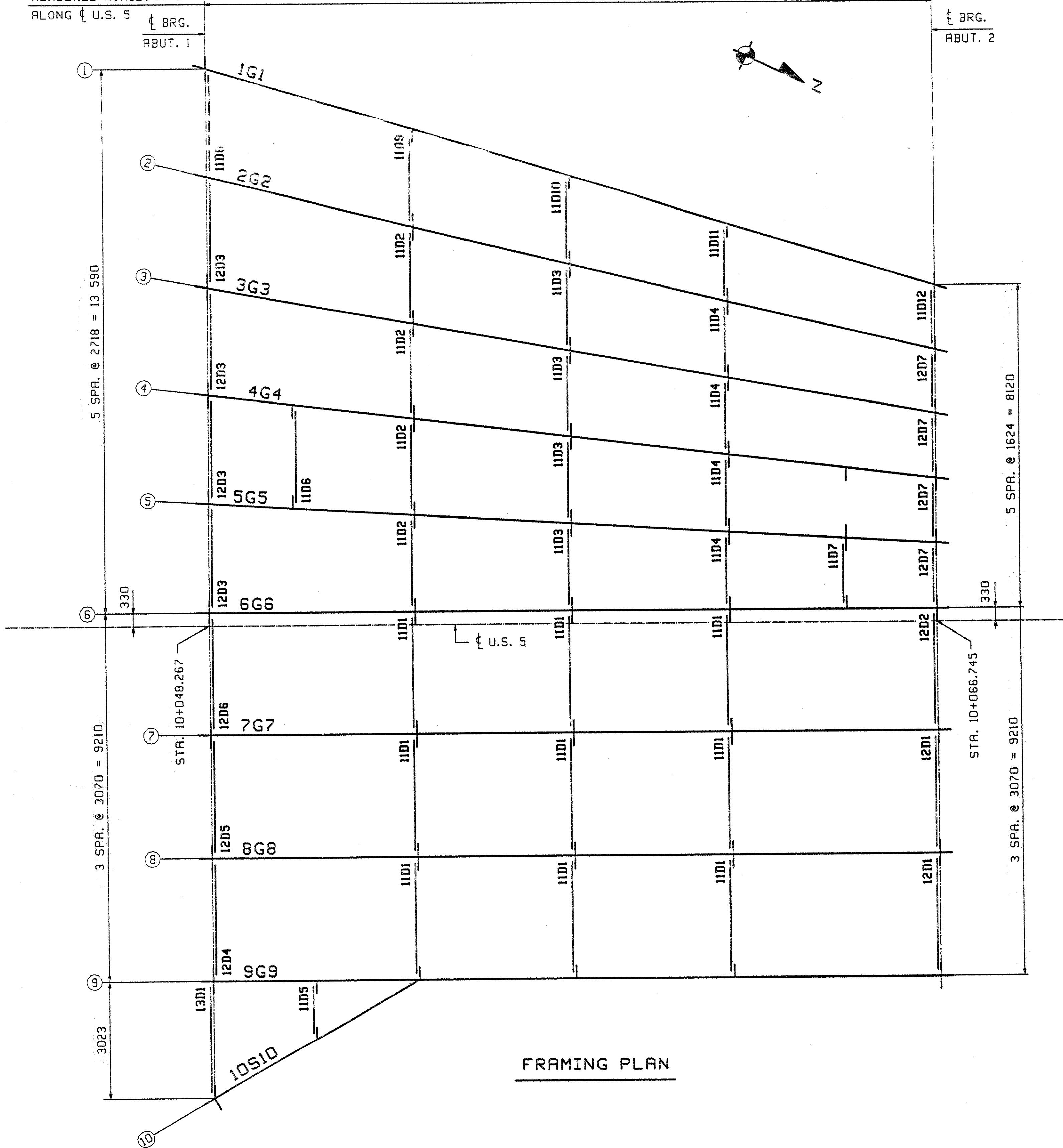


MEASURED HORIZONTAL  
ALONG U.S. 5

18 478



FRAMING PLAN

FIELD BOLT LIST							A325 Type 3 BOLTS			PIECES CONNECTED AND REMARKS	
LINE	NO. REQ'D.	BOLT DIA.	BOLT LEN.	# OF CONN.	GRIP	THICKNESS OF PCS. CONNECTED	WASH CODE				
1								KICKER BEAM TO GIRDER 9G9			
2	14	7/8	2 1/2	14	1 24	10 14		1 BEAM WEB TO BENT CONNECTION PLATE			
3								ABUTMENT DIAPHRAGMS			
5	392	7/8	2 1/2	14	29 29	10 18		1 DIAPHRAGM WEB TO BEARING STIFFENER			
7								ABUTMENT DIAPHRAGM 13D1			
8	10	7/8	2 1/2	5	2 24	6 18		1 DIAPHRAGM WEB TO BEARING STIFFENER			
10								TELEPHONE DIAPHRAGMS			
11	60	7/8	2 1/2	6	10 27	9 18		1 DIAPHRAGM WEB TO CONNECTION PLATE			
13								INTERMEDIATE DIAPHRAGMS			
14	294	7/8	2 1/2	7	42 24	10 14		1 DIAPHRAGM WEB TO CONNECTION PLATE			
16								WATERLINE DIAPHRAGMS			
17	12	7/8	2 1/2	3	4 23	9 14		1 DIAPHRAGM WEB TO CONNECTION PLATE			
19								DIAPHRAGM 11D5			
20	10	7/8	2 1/2	5	2 20	6 14		1 DIAPHRAGM WEB TO CONNECTION PLATE			

1: 1 Hard Flat Washer

FIELD BOLT SUMMARY				5% ADDED, MIN. 2 EXTRA		REMARKS
LINE	NO. OF BOLTS	BOLT DIA.	TYPE	BOLT LEN	ACTUAL COUNT	
1	357	7/8	A325 Type 3	2 1/2	340	
2	475	7/8	A325 Type 3	2 1/2	452	
3						
4	832 Hard Flat Washers for 7/8" BOLT					
5						
6						
7						

- All bolt diameters and lengths are shown in inches (english unit of measurement).
- All grip values are shown in metric units.

OUT FOR APPROVAL	4/14/03				
OUT FOR APPROVAL					
ISSUED TO SHOP					
FIELD & OFFICE					

REV.	REMARKS	DATE	DWN	CHK	APP	Q.A.	NO.	DIA.	LGT	TYPE	WASHER
MATERIAL:	ELECTRODES:	HOLES:	SHOP BOLTS:								
M270M-345W		24mm (15/16")									

SURFACE PREP. & PAINT:  
-ALL STEEL SHALL BE BLAST CLEANED AND LEFT UNPAINTED.

DESCRIPTION:	FRAMING PLAN	DRAWN BY	DATE
JOB:	US 5 OVER WHETSTONE BROOK	JTB	03/21
	BRIDGE NO. 7	CHKD BY	
	BRATTLEBORO, VERMONT (WINDHAM COUNTY)	EPE	04/07
	CONTRACTOR: RENAUD BROTHERS	APPROV BY	
		SUPERVISOR	M. J. GATTI
PROJ NO.	BHF 2000(17)	Q.A.	
CUSTOMER:	VERMONT AGENCY OF TRANSPORTATION		083
<b>CASCO BAY STEEL STRUCTURES, INC.</b>		JOB NO.	DRG. NO.
75 SPRING HILL ROAD	SACO, MAINE 04072	194	E1
PHONE (207) 282-7360	FAX. (207) 282-1179	REV.	△

V.A.O.T.  
RECEIVED  
APR 15 2003  
APPROVED BY: [Signature]  
DATE: [Blank]