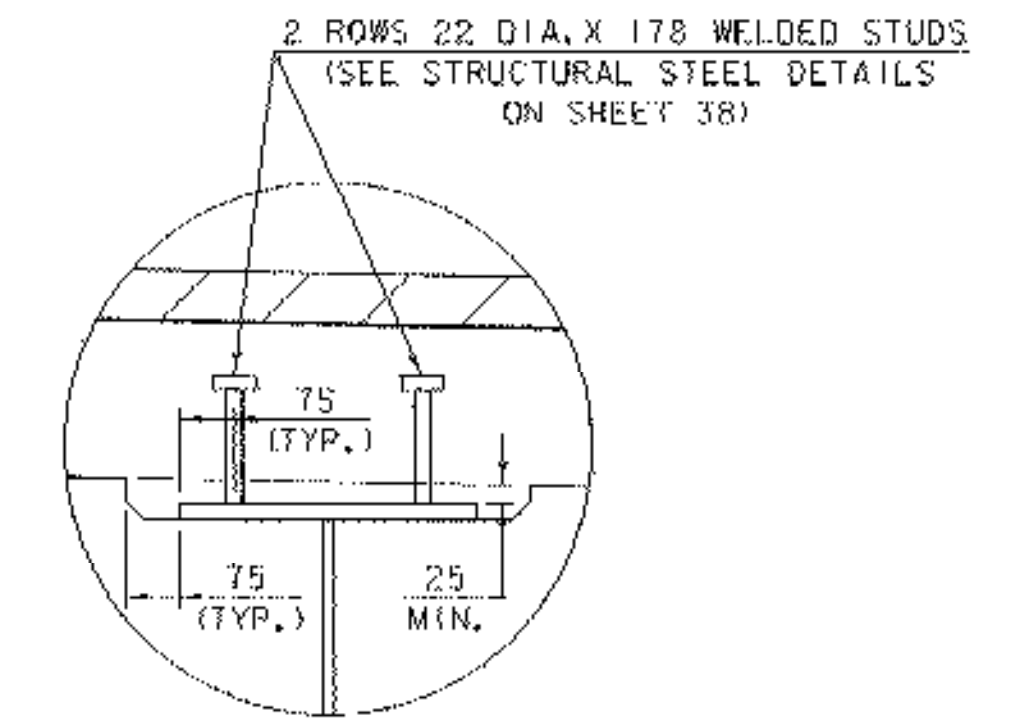
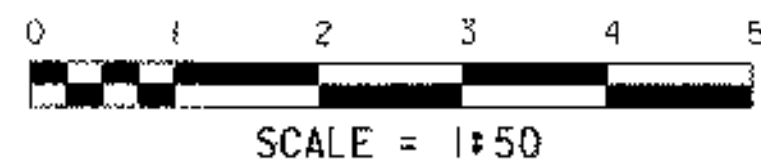
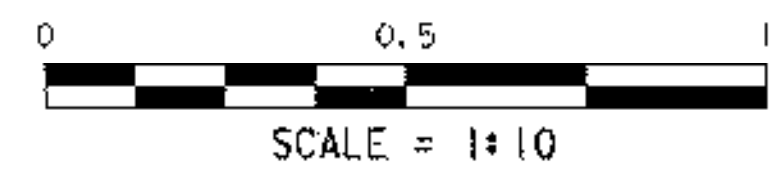


BRIDGE TYPICAL SECTION @ MIDSPAN

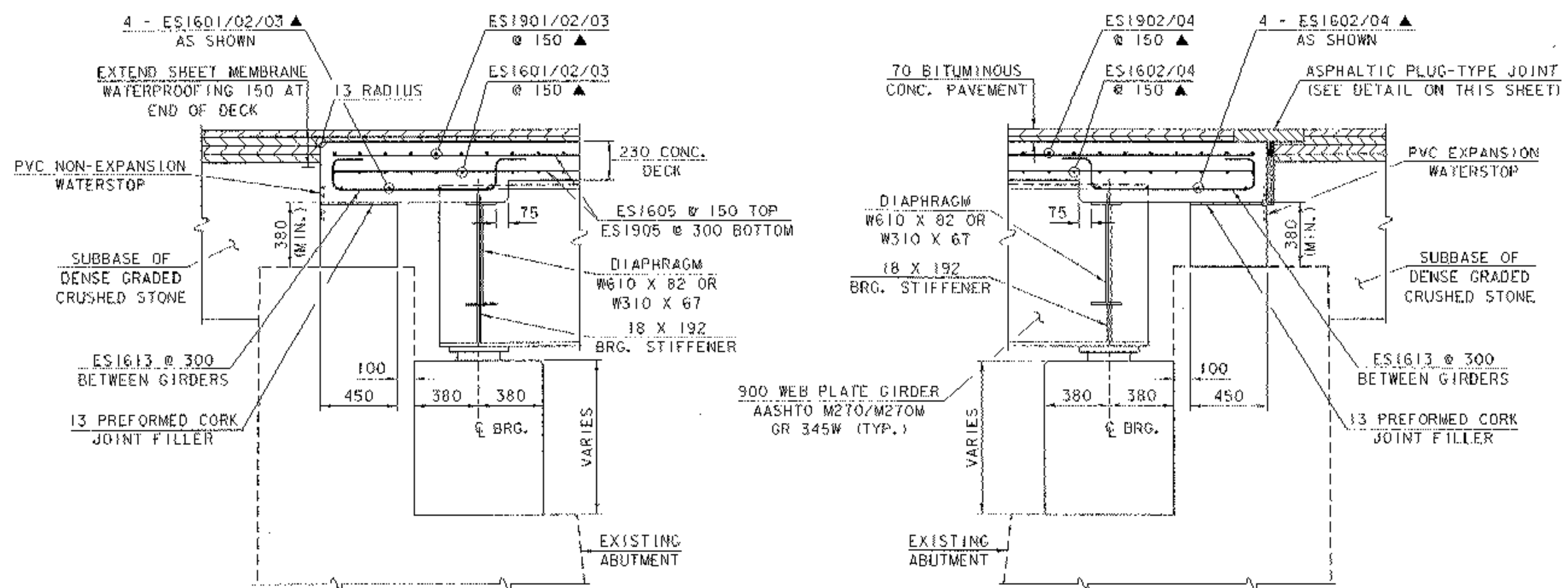


DETAIL "A"



PLUG JOINT NOTES:

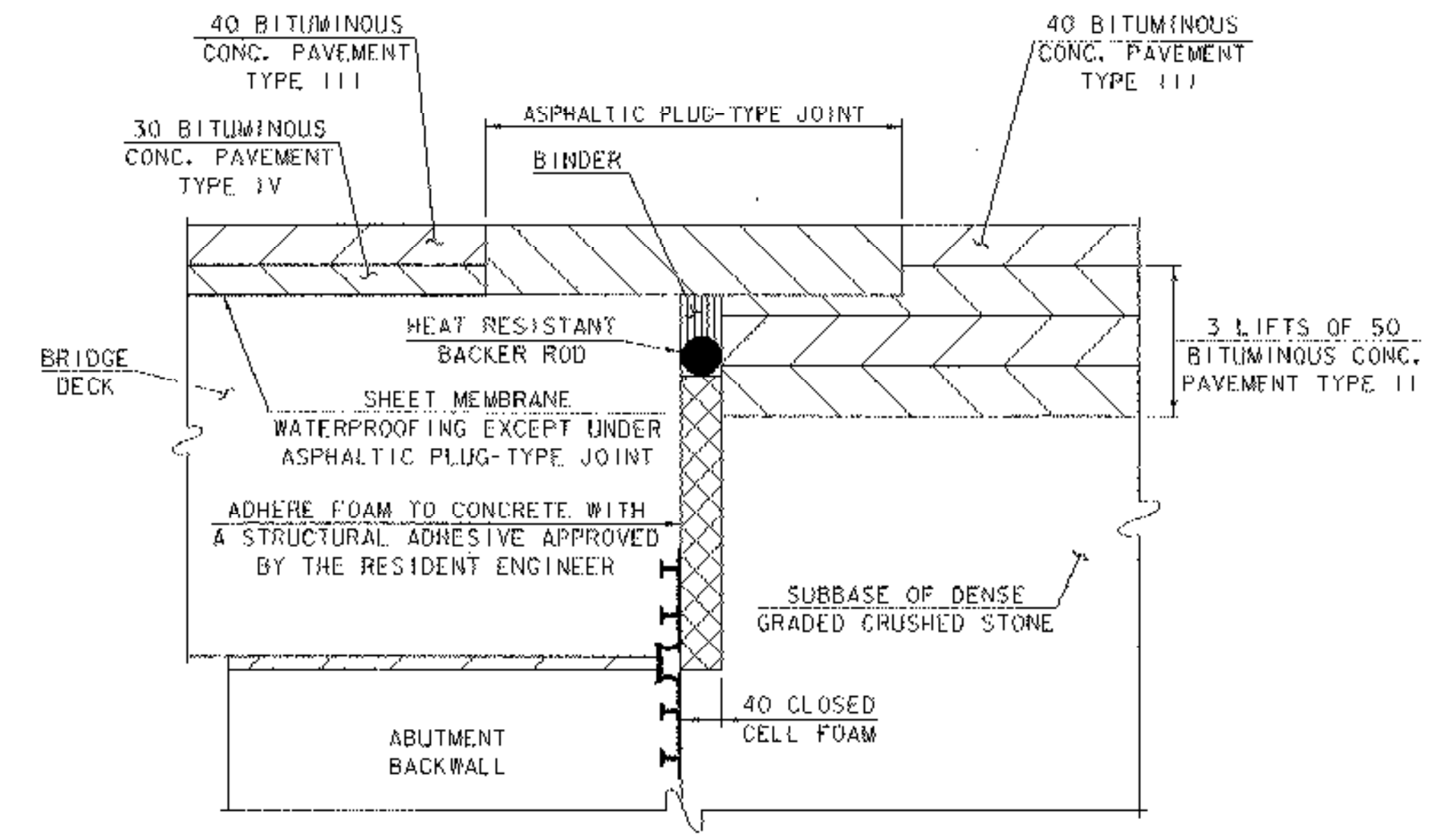
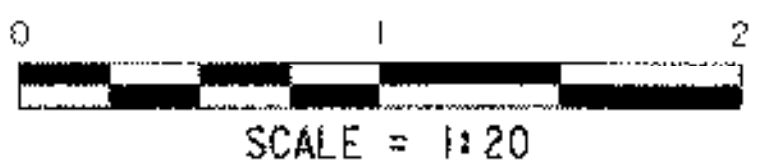
1. THE CLOSED CELL FOAM SHALL BE ADHERED TO THE BRIDGE DECK WITH AN APPROVED STRUCTURAL ADHESIVE.
2. SUBBASE MATERIAL SHALL BE TIGHTLY COMPACTED AGAINST THE FOAM FROM THE BOTTOM OF THE BRIDGE DECK TO THE TOP OF THE FOAM MATERIAL.
3. ALL MATERIALS, LABOR, EQUIPMENT AND INCIDENTALS ASSOCIATED WITH THE INSTALLATION OF THE ASPHALTIC PLUG-TYPE JOINT, INCLUDING THE FOAM AND STRUCTURAL ADHESIVE, SHALL BE PAID FOR UNDER THE UNIT PRICE BID FOR ITEM 516.10, "BRIDGE EXPANSION JOINT".



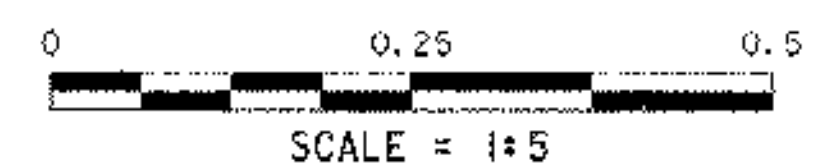
ABUTMENT NO. 1 (FIXED)

ABUTMENT NO. 2 (EXPANSION)

ABUTMENT END DETAILS



ASPHALTIC PLUG-TYPE JOINT DETAIL



BRIDGE TYPICAL SECTION

PROJECT NAME:	BRATTLEBORO	FILE NAME:	94J078\Structures\sj078bts.J	PLOT DATE:	06-FEB-2003
PROJECT NUMBER:	BHF 2000 (17)	PROJECT MANAGER:	R. R. WHITCOMB	DRAWN BY:	B. MAURICE
		DESIGNED BY:	T. SUMNER	CHECKED BY:	T. SUMNER
					SHEET 33 OF 71