

- METAL HAND RAILING (MOD.)**
 10+047.63 LT. - 10+065.25 LT.
 20+023.44 RT. - 10+065.08 RT.
- BRIDGE RAILING - GALV. BOX BEAM/PEDESTRIAN (MOD.)**
 10+047.80 LT. - 10+063.95 LT.
 20+023.61 RT. - 10+063.72 RT.
- REMOVING AND RESETTING CHAIN-LINK FENCE**
 20+015.00 RT. - 20+044.42 RT. (REMOVE)
 20+015.00 RT. - 20+023.50 RT. (RESET)
 10 + 048 LT REMOVE & RESET
- VERTICAL GRANITE CURB**
 10+015.11 RT. - 10+020.63 RT.
 10+018.88 LT. - 10+047.34 LT.
 10+066.74 LT. - 10+080.00 LT.
 10+069.14 RT. - 10+080.00 RT.
 20+014.65 RT. - 20+021.83 RT.
 20+035.39 LT. - 20+040.30 LT.
 + 037 + 040
- PORTLAND CEMENT CONCRETE SIDEWALK, 125mm**
 * 10+015.11 RT. - 10+020.63 RT.
 10+017.79 LT. - 10+047.34 LT.
 10+066.74 LT. - 10+080.00 LT.
 10+069.14 RT. - 10+080.00 RT.
 20+014.65 RT. - 20+021.83 RT.
 * 20+033.74 LT. - 20+040.30 LT.
 + 037 + 043
- PORTLAND CEMENT CONCRETE SIDEWALK, 200mm (MOD.)**
 20+021.83 RT. - 20+040.26 RT.
- SIDEWALK RAMP, TYPE 1**
 10+017.78 LT. - 10+021.44 LT.
- SIDEWALK RAMP, TYPE 6**
 10+025.91 LT. - 10+038.44 LT.
 20+030.81 RT. - 20+040.24 RT.
 20+033.74 LT. - 20+036.60 LT.
 + 037 + 041
- * REPLACE SIDEWALK RAMPS WITH FULL HEIGHT CURB AND SIDEWALK.

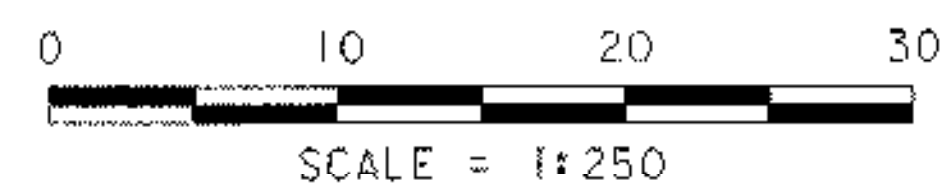
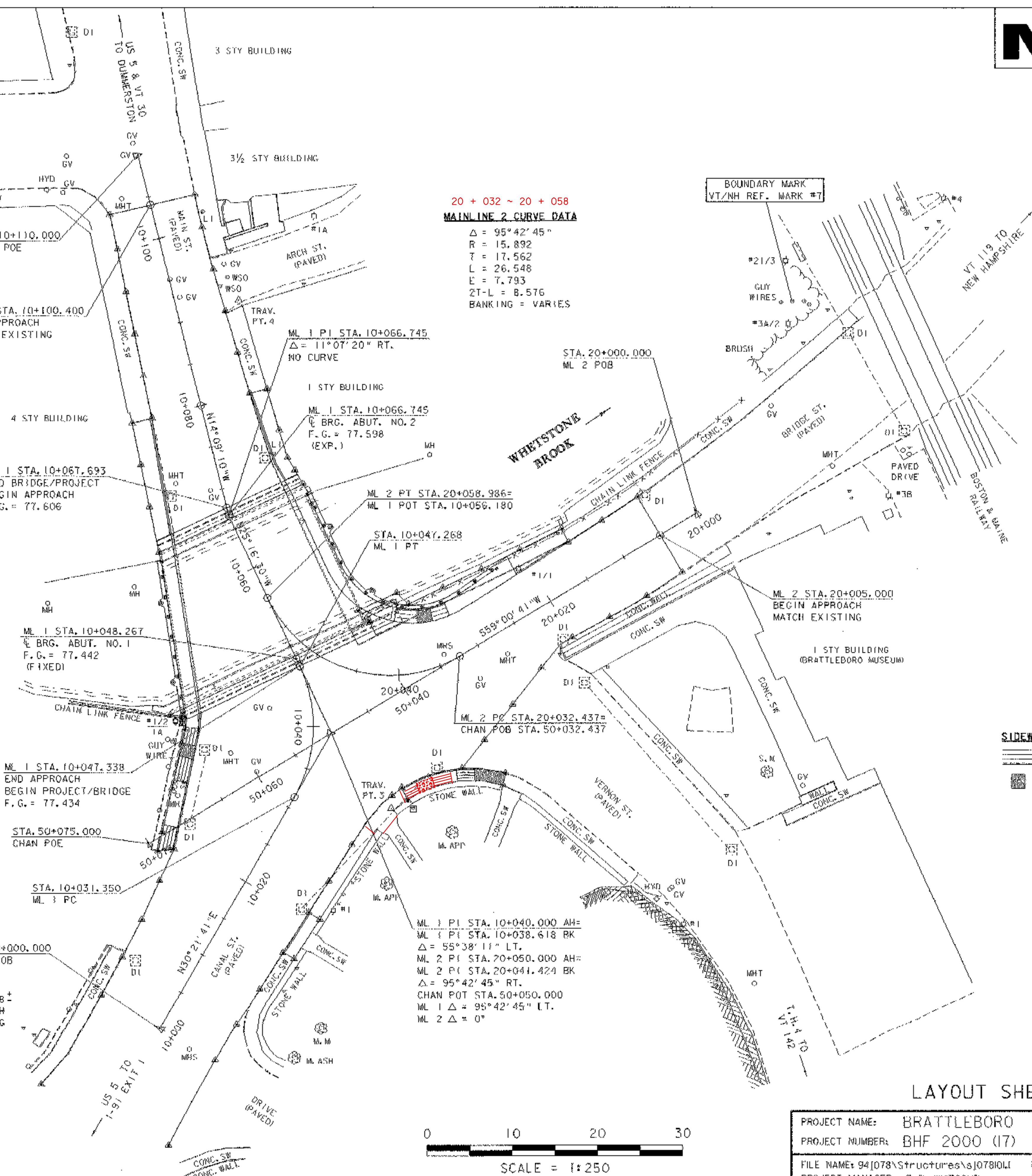
MAINLINE 1 CURVE DATA
 $\Delta = 55^{\circ}38'11''$
 $R = 16.393$
 $T = 8.650$
 $L = 15.918$
 $E = 2.142$
 $2T-L = 1.382$
 BANKING = VARIES

EXISTING BRIDGE DATA:
 SIMPLE SPAN WITH A CONCRETE FILLED STEEL GRID DECK SUPPORTED BY RIVETED BUILT-UP STEEL PLATE GIRDERS (5) AND FLOOR BEAM SYSTEM. SUBSTRUCTURE CONSISTS OF LAID-UP AND MORTARED GRANITE BLOCKS WITH A POURED CONCRETE SUBFOOTING ALONG TOES OF EACH ABUTMENT. ROADWAY WIDTH VARIES FROM 19.2m AT SOUTHERLY END TO 14.6m AT THE NORTHERLY END. 1.8m SIDEWALKS EXISTS ON EACH SIDE OF BRIDGE. CLEAR HEIGHT: 4.6m OVERALL LENGTH: 20.7m

20 + 032 ~ 20 + 058
MAINLINE 2 CURVE DATA
 $\Delta = 95^{\circ}42'45''$
 $R = 15.892$
 $T = 17.562$
 $L = 26.548$
 $E = 7.793$
 $2T-L = 8.576$
 BANKING = VARIES

BM 1
 NGS K51
 BENCH MARK DISK
 SET ON CONC. WALL
 EL. = 78.232

SIDEWALK LEGEND
 AUXILIARY RAMP
 LANDING



LAYOUT SHEET

PROJECT NAME:	BRATTLEBORO	PLOT DATE:	06-FEB-2003
PROJECT NUMBER:	BHF 2000 (17)	DRAWN BY:	G. ROY
FILE NAME:	94\078\structures\j07810LI	CHECKED BY:	T. SUMNER
DESIGNED BY:	G. ROY	SHEET	9 OF 71