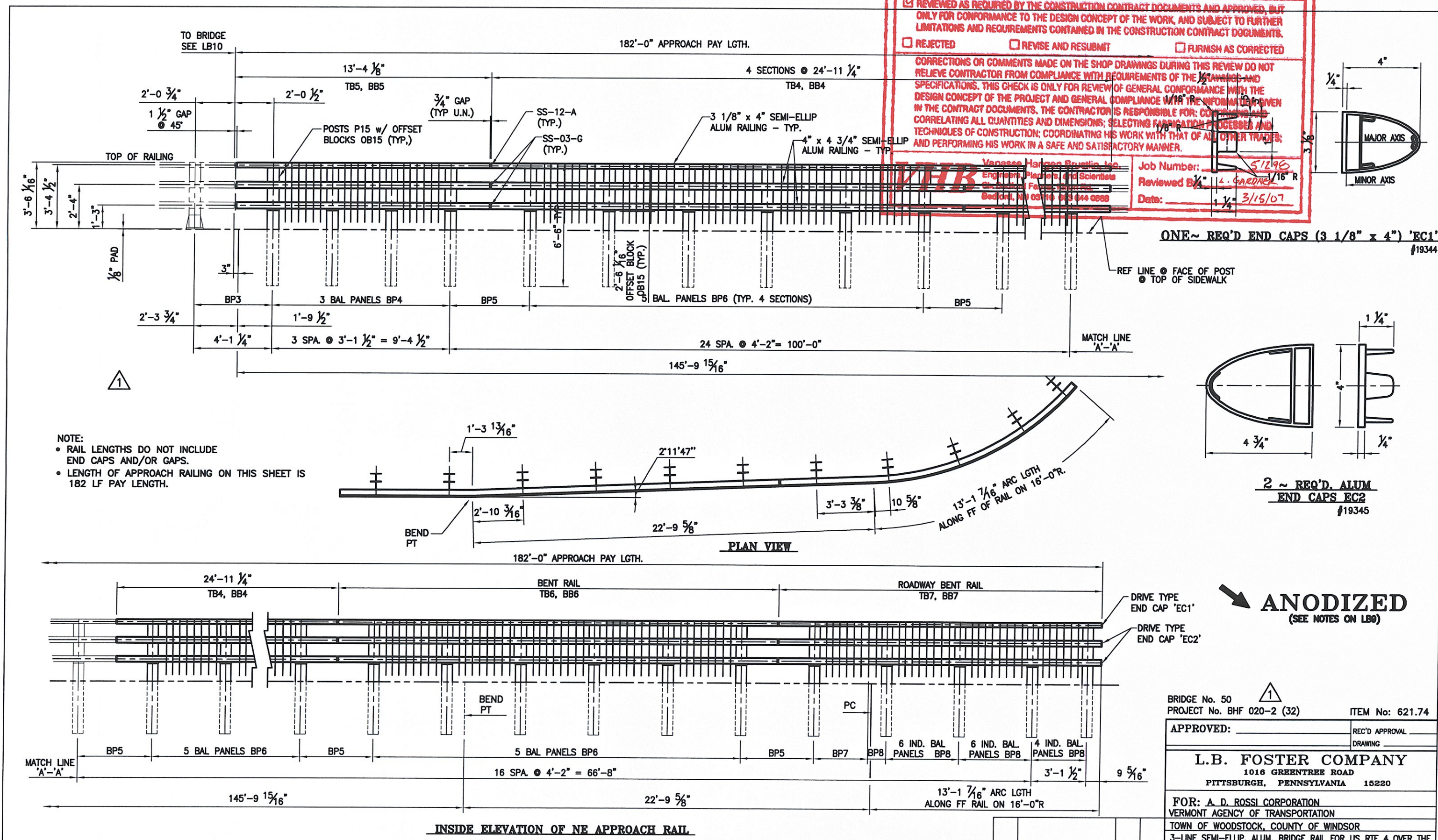


**SHOP DRAWING REVIEW**

REVIEWED AS REQUIRED BY THE CONSTRUCTION CONTRACT DOCUMENTS AND APPROVED, BUT ONLY FOR CONFORMANCE TO THE DESIGN CONCEPT OF THE WORK AND SUBJECT TO FURTHER LIMITATIONS AND REQUIREMENTS CONTAINED IN THE CONSTRUCTION CONTRACT DOCUMENTS.  
 REJECTED     REVISE AND RESUBMIT     FURNISH AS CORRECTED

CORRECTIONS OR COMMENTS MADE ON THE SHOP DRAWINGS DURING THIS REVIEW DO NOT RELIEVE CONTRACTOR FROM COMPLIANCE WITH REQUIREMENTS OF THE SPECIFICATIONS AND DESIGN CONCEPT OF THE PROJECT AND GENERAL COMPLIANCE WITH THE SPECIFICATIONS IN THE CONTRACT DOCUMENTS. THE CONTRACTOR IS RESPONSIBLE FOR CORRECTING AND CORRELATING ALL QUANTITIES AND DIMENSIONS, SELECTING APPROPRIATE MATERIALS AND TECHNIQUES OF CONSTRUCTION COORDINATING HIS WORK WITH THAT OF ALL OTHER TRAILER AND PERFORMING HIS WORK IN A SAFE AND SATISFACTORY MANNER.

Job Number: 021746  
 Reviewed By: [Signature]  
 Date: 3/16/07



NOTE:  
 • RAIL LENGTHS DO NOT INCLUDE END CAPS AND/OR GAPS.  
 • LENGTH OF APPROACH RAILING ON THIS SHEET IS 182 LF PAY LENGTH.