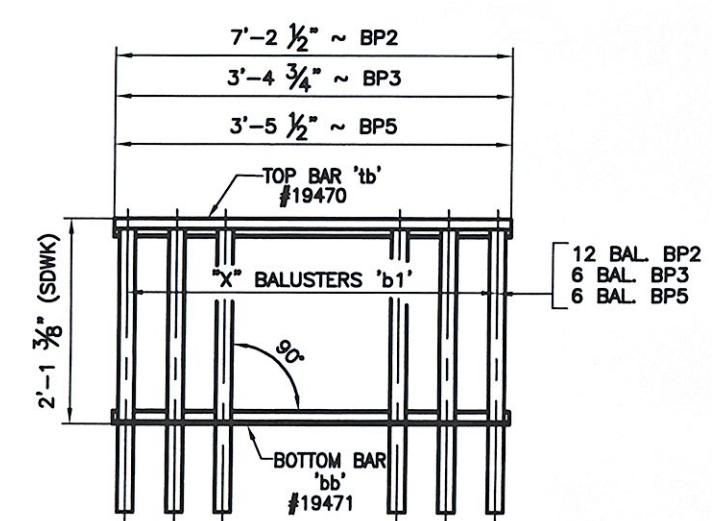
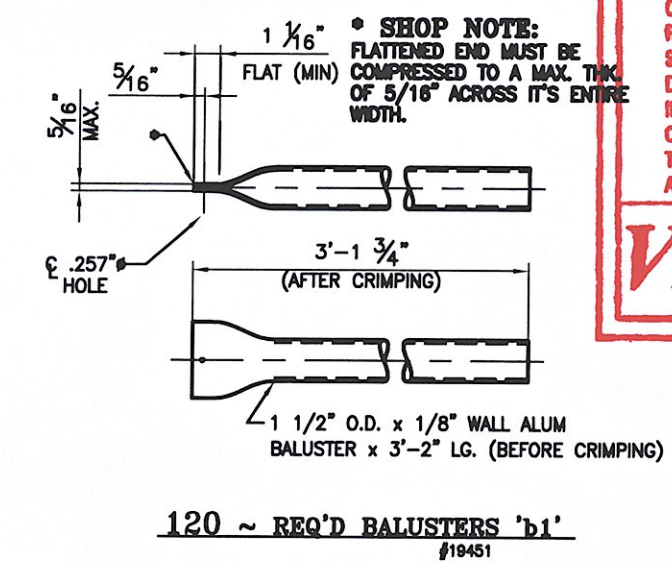


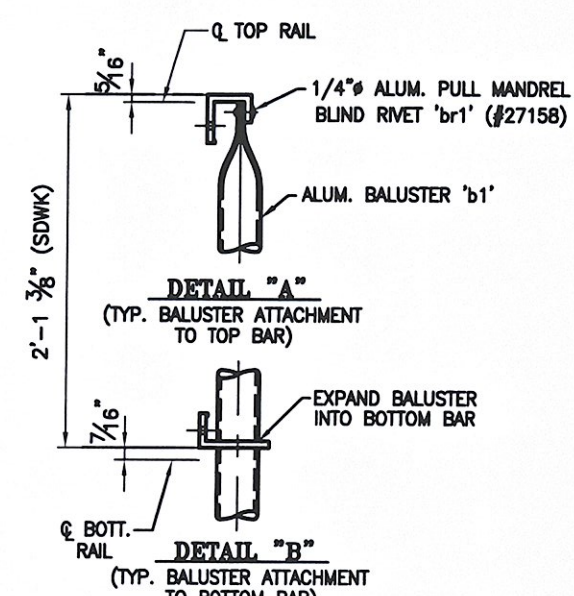
PANEL	MARK	QTY	LENGTH	"a"	"b"	"c"	"d"	"e"	"f"	"g"	"h"
BP2	BP2	8	7'-2 1/2"	8 1/4"	1'-2"	2'-1 3/8"	4 3/4"	11	6'-5"	1'-9"	-
BP3	BP3	1	3'-4 3/4"	1 1/4"	1'-7 1/8"	2 1/2"	3 1/2"	5	2'-11"	-	-
BP5	BP5	7	3'-5 1/2"	7/16"	1'-7 5/16"	2 7/8"	3 1/4"	5	2'-11"	-	-



6 REQ'D. ~ BALUSTER PANEL ASSEMBLY 'BP2'
 ONE REQ'D. ~ BALUSTER PANEL ASSEMBLY 'BP3'
 7 REQ'D. ~ BALUSTER PANEL ASSEMBLY 'BP5'



120 ~ REQ'D BALUSTERS 'b1'
 #19451



SHOP DRAWING REVIEW

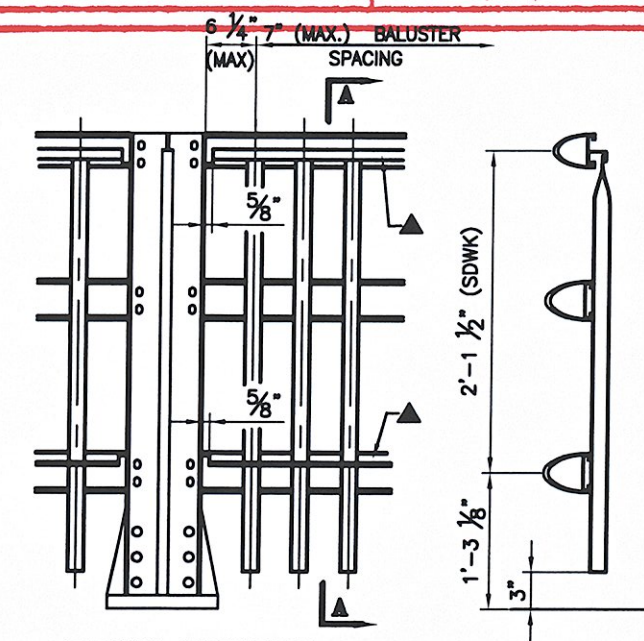
REVIEWED AS REQUIRED BY THE CONSTRUCTION CONTRACT DOCUMENTS AND APPROVED, BUT ONLY FOR CONFORMANCE TO THE DESIGN CONCEPT OF THE WORK, AND SUBJECT TO FURTHER LIMITATIONS AND REQUIREMENTS CONTAINED IN THE CONSTRUCTION CONTRACT DOCUMENTS.

REJECTED REVISE AND RESUBMIT FURNISH AS CORRECTED

CORRECTIONS OR COMMENTS MADE ON THE SHOP DRAWINGS DURING THIS REVIEW DO NOT RELIEVE CONTRACTOR FROM COMPLIANCE WITH REQUIREMENTS OF THE DRAWINGS AND SPECIFICATIONS. THIS CHECK IS ONLY FOR REVIEW OF GENERAL CONFORMANCE WITH THE DESIGN CONCEPT OF THE PROJECT AND GENERAL COMPLIANCE WITH THE INFORMATION GIVEN IN THE CONTRACT DOCUMENTS. THE CONTRACTOR IS RESPONSIBLE FOR: CONFIRMING AND CORRELATING ALL QUANTITIES AND DIMENSIONS; SELECTING FABRICATION PROCESSES AND TECHNIQUES OF CONSTRUCTION; COORDINATING HIS WORK WITH THAT OF ALL OTHER TRADES; AND PERFORMING HIS WORK IN A SAFE AND SATISFACTORY MANNER.

VHB Vanasse Hangen Brustlin, Inc.
 Engineers, Planners, and Scientists
 5th Bedford Farms, 10300 Rd.
 Bedford, NH 03110 603 844 0888

Job Number: 51295
 Reviewed By: L. GARSNER
 Date: 3/15/07



TYPICAL ELEVATION
 1/4"-ZOUNG S.S. SOCKET SET SCREW x 1/2" - "S1" (#22079)
 EVERY OTHER SPACE BETWEEN BALUSTERS IF POSSIBLE

SECTION A-A

ANODIZED
 (SEE NOTES ON L&B)

BRIDGE No. 50
 PROJECT No. BHV 020-2 (32) ITEM No. 525.23

APPROVED: _____ DATE: _____

L.B. FOSTER COMPANY
 1016 GREENTRIER ROAD
 PITTSBURGH, PENNSYLVANIA 15220

FOR: A. D. ROSSI CORPORATION

VERMONT AGENCY OF TRANSPORTATION

TOWN OF WOODSTOCK, COUNTY OF WINDSOR

3-LINE SEMI-CLIP ALUM. BRIDGE RAIL FOR US RTE 4 OVER THE

OTAUQUECHEE RIVER - BALUSTER PANEL DETAILS

MADE CMS DATE 01/21/07 JOB No. AR0361 CUST. No. _____
 CHECKED DATE 01/28/07 DRAWING LB11A REV. No. _____

REV.	DESCRIPTION	BY	DATE