

OFFSET BLOCK CHART FOR BRIDGE SE APPROACH
CURB CONDITION - POSTS P6L - P7L

POST No.	OFFSET BLOCK	QTY.	A	B	C	D	E	F (O.C.)	X
P6L	OBSL	1	1'-4 11/16"	1'-1 11/16"	2 1/8"	1/4"	1 7/8"	1'-4 9/16"	3/8"
P6L	OBSL	1	1'-2 15/16"	11 15/16"	2 1/8"	1/4"	1 7/8"	1'-2 13/16"	3/8"
P7L	OBSL	1	1'-1 3/16"	10 3/16"	2 1/8"	1/4"	1 7/8"	1'-1 1/16"	3/8"

OFFSET BLOCK CHART FOR BRIDGE SW APPROACH
CURB CONDITION - POSTS P6R - P7R

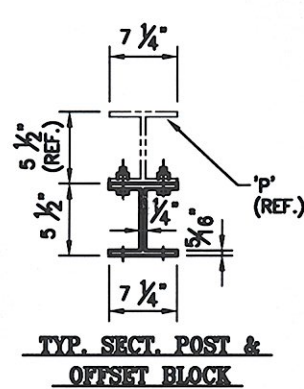
POST No.	OFFSET BLOCK	QTY.	A	B	C	D	E	F (O.C.)	X
P6R	OBSR	1	1'-4 11/16"	1'-1 11/16"	2 1/8"	1/4"	1 7/8"	1'-4 9/16"	3/8"
P6R	OBSR	1	1'-2 15/16"	11 15/16"	2 1/8"	1/4"	1 7/8"	1'-2 13/16"	3/8"
P7R	OBSR	1	1'-1 3/16"	10 3/16"	2 1/8"	1/4"	1 7/8"	1'-1 1/16"	3/8"

OFFSET BLOCK - RAIL MTG. DIMENSIONS

POST No.	OFFSET BLOCK	G	H	J	K
P6L	OBSL	1 3/16"	1'-0 13/16"	1 1/8"	1'-0 9/16"
P6L	OBSL	1 3/16"	11 1/8"	1 1/8"	10 7/8"
P7L	OBSL	1 3/16"	9 3/8"	1 1/8"	9 1/8"

OFFSET BLOCK - RAIL MTG. DIMENSIONS

POST No.	OFFSET BLOCK	G	H	J	K
P6R	OBSR	1 3/16"	1'-0 13/16"	1 1/8"	1'-0 9/16"
P6R	OBSR	1 3/16"	11 1/8"	1 1/8"	10 7/8"
P7R	OBSR	1 3/16"	9 3/8"	1 1/8"	9 1/8"



SHOP DRAWING REVIEW

REVIEWED AS REQUIRED BY THE CONSTRUCTION CONTRACT DOCUMENTS AND APPROVED, BUT ONLY FOR CONFORMANCE TO THE DESIGN CONCEPT OF THE WORK, AND SUBJECT TO FURTHER LIMITATIONS AND REQUIREMENTS CONTAINED IN THE CONSTRUCTION CONTRACT DOCUMENTS.

REJECTED REVISE AND RESUBMIT FURNISH AS CORRECTED

CORRECTIONS OR COMMENTS MADE ON THE SHOP DRAWINGS DURING THIS REVIEW DO NOT RELIEVE CONTRACTOR FROM COMPLIANCE WITH REQUIREMENTS OF THE DRAWINGS AND SPECIFICATIONS. THIS CHECK IS ONLY FOR REVIEW OF GENERAL CONFORMANCE WITH THE DESIGN CONCEPT OF THE PROJECT AND GENERAL COMPLIANCE WITH THE INFORMATION GIVEN IN THE CONTRACT DOCUMENTS. THE CONTRACTOR IS RESPONSIBLE FOR: CONFIRMING AND CORRELATING ALL QUANTITIES AND DIMENSIONS; SELECTING FABRICATION PROCESSES AND TECHNIQUES; CONSTRUCTING COORDINATING HIS WORK WITH THAT OF ALL OTHER TRADES; AND PERFORMING HIS WORK IN A SAFE AND SATISFACTORY MANNER.

VHB Vanasse Hangen Brustlin, Inc.
Engineers, Planners, and Scientists
Bedford, NH 03110 603 664 0959

Job Number: 51296
Reviewed By: L. GARDNER
Date: 3/15/07

NOTE:
4 CLAMPING BARS CB-03-A (#1947) PER POSTS P6 - P7 w/ 1/2" x 13 LINC S.S. BOLT x 1" LG. FB1', 1 1/16" O.D. x 17/32" I.D. x 3/32" THK. ALUM WASHER FW1 (#15280 & # 19404) (6 PER POST)

ANODIZED
(SEE LIST FOR SPECIFICATIONS)

BRIDGE No. 50
PROJ. No. BHF 020-2 (32) ITEM No. 621.74

APPROVED: _____
DRAWING

L.B. FOSTER COMPANY
1010 GREENBRIER ROAD
PITTSBURGH, PENNSYLVANIA 15220

FOR: A. D. ROSSI CORPORATION
VERMONT AGENCY OF TRANSPORTATION
TOWN OF WOODSTOCK, COUNTY OF WINDSOR
3-LINE SEMI-ELLIP. ALUM. BRIDGE RAIL FOR US RTE 4 OVER THE OTTAWAQUECHEE RIVER - OFFSET DETAILS

MADE C.M.S. DATE 01/20/06 JOB No. AR0261 CUST. No. _____
CHECKED DATE 01/25/07 DRAWING LBB REV. No. _____

REV.	DESCRIPTION	BY	DATE