

OFFSET BLOCK CHART FOR BRIDGE SE APPROACH
● CURB CONDITION - POSTS P1L - P4L

POST No.	OFFSET BLOCK	QTY.	A	B	C	D	E	F (O.C.)	G	X	REV
P1L	OB1L	1	2'-9 7/16"	2'-6 7/16"	1'-1 5/16"	1 7/8"	9/16"	2'-9 1/8"	1 1/4"	15/16"	
P2L	OB2L	1	2'-8 1/2"	2'-3 7/16"	11 9/16"	1 7/8"	9/16"	2'-6 3/16"	1 1/4"	15/16"	
P3L	OB3L	1	2'-3 1/2"	2'-0 1/2"	9 7/8"	1 7/8"	9/16"	2'-3 3/16"	1 1/4"	15/16"	
P4L	OB4L	1	2'-0 9/16"	1'-9 1/2"	8 3/16"	1 7/8"	9/16"	2'-0 1/4"	1 1/4"	15/16"	

OFFSET BLOCK CHART FOR BRIDGE SW APPROACH
● CURB CONDITION - POSTS P1R - P4R

POST No.	OFFSET BLOCK	QTY.	A	B	C	D	E	F (O.C.)	G	X	REV
P1R	OB1R	1	2'-9 7/16"	2'-6 7/16"	1'-1 5/16"	1 7/8"	9/16"	2'-9 1/8"	1 1/4"	15/16"	
P2R	OB2R	1	2'-8 1/2"	2'-3 7/16"	11 9/16"	1 7/8"	9/16"	2'-6 3/16"	1 1/4"	15/16"	
P3R	OB3R	1	2'-3 1/2"	2'-0 1/2"	9 7/8"	1 7/8"	9/16"	2'-3 3/16"	1 1/4"	15/16"	
P4R	OB4R	1	2'-0 9/16"	1'-9 1/2"	8 3/16"	1 7/8"	9/16"	2'-0 1/4"	1 1/4"	15/16"	

OFFSET BLOCK ~ RAIL MTG. DIMENSIONS

POST No.	OFFSET BLOCK	H	J	K	L	M	N
P1L	OB1L	1"	1'-0 3/8"	2'-5 5/8"	7/8"	11 15/16"	2'-5 1/16"
P2L	OB2L	1"	10 11/16"	2'-2 5/8"	7/8"	10 1/4"	2'-2 1/16"
P3L	OB3L	1"	8 15/16"	1'-11 5/8"	7/8"	8 9/16"	1'-11 1/16"
P4L	OB4L	1"	7 1/4"	1'-8 5/8"	7/8"	6 7/8"	1'-8 1/16"

OFFSET BLOCK ~ RAIL MTG. DIMENSIONS

POST No.	OFFSET BLOCK	H	J	K	L	M	N
P1R	OB1R	1"	1'-0 3/8"	2'-5 5/8"	7/8"	11 15/16"	2'-5 1/16"
P2R	OB2R	1"	10 11/16"	2'-2 5/8"	7/8"	10 1/4"	2'-2 1/16"
P3R	OB3R	1"	8 15/16"	1'-11 5/8"	7/8"	8 9/16"	1'-11 1/16"
P4R	OB4R	1"	7 1/4"	1'-8 5/8"	7/8"	6 7/8"	1'-8 1/16"

NOTE:
 2 CLAMPING BARS CB-01-H (#19447) PER POSTS P1 - P4
 4 CLAMPING BARS CB-03-A (#19447) PER POSTS P1 - P4
 W/ 1/2"-13 UNC S.S. BOLT x 1" LG. 'FB1', 1 1/16" O.D. x 17/32" I.D. x 3/32" THK. ALUM WASHER 'FW1' (#15280 & # 19404) (16 PER POST)

NOTE:
 4 CLAMPING BARS CB-03-A (#19447) PER POSTS P1 - P4
 W/ 1/2"-13 UNC S.S. BOLT x 1" LG. 'FB1', 1 1/16" O.D. x 17/32" I.D. x 3/32" THK. ALUM WASHER 'FW1' (#15280 & # 19404) (8 PER POST)

SHOP DRAWING REVIEW

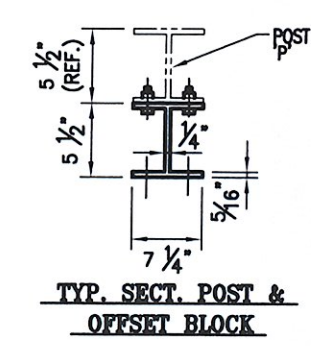
REVIEWED AS REQUIRED BY THE CONSTRUCTION CONTRACT DOCUMENTS AND APPROVED, BUT ONLY FOR CONFORMANCE TO THE DESIGN CONCEPT OF THE WORK, AND SUBJECT TO FURTHER LIMITATIONS AND REQUIREMENTS CONTAINED IN THE CONSTRUCTION CONTRACT DOCUMENTS.

REJECTED REVISE AND RESUBMIT FURNISH AS CORRECTED

CORRECTIONS OR COMMENTS MADE ON THE SHOP DRAWINGS DURING THIS REVIEW DO NOT RELIEVE CONTRACTOR FROM COMPLIANCE WITH REQUIREMENTS OF THE DRAWINGS AND SPECIFICATIONS. THIS CHECK IS ONLY FOR REVIEW OF GENERAL CONFORMANCE WITH THE DESIGN CONCEPT OF THE PROJECT AND GENERAL COMPLIANCE WITH THE INFORMATION GIVEN IN THE CONTRACT DOCUMENTS. THE CONTRACTOR IS RESPONSIBLE FOR CORRECTING AND CORRELATING ALL QUANTITIES AND DIMENSIONS, SELECTING FABRICATION PROCESSES AND TECHNIQUES OF CONSTRUCTION, COORDINATING HIS WORK WITH THAT OF ALL OTHER TRADES, AND PERFORMING HIS WORK IN A SAFE AND SATISFACTORY MANNER.

VHB Vanasse Hangen Brustlin, Inc.
 Engineers, Planners, and Scientists
 50 Bedford Farms, Kilron Rd.
 Bedford, MA 02111-0001 603-644-0888

Job Number: 5129E
 Reviewed By: L. CADENER
 Date: 5/15/07



ANODIZED
 (SEE LIST FOR SPECIFICATIONS)

BRIDGE #50
 PROJECT No. BHF 020-2 (32) ITEM No. 621.74

APPROVED: _____ DATE: _____
 DRAWING

L.B. FOSTER COMPANY
 1016 GREENTREE ROAD
 PITTSBURGH, PENNSYLVANIA 15220

FOR: A. D. ROSS CORPORATION
 VERMONT AGENCY OF TRANSPORTATION
 TOWN OF WOODSTOCK, COUNTY OF WINDSOR
 3-LINE SEM-ELIP. ALUM. BRIDGE RAIL FOR US RTE 4 OVER THE
 OTTAWA/RIVER - POST-OFFSET DETAILS

MADE: CMS DATE 01/20/07 JOB No. AR0281 CUST. No.
 CHECK: BLM DATE 01/25/07 DRAWING LBS REV. No.