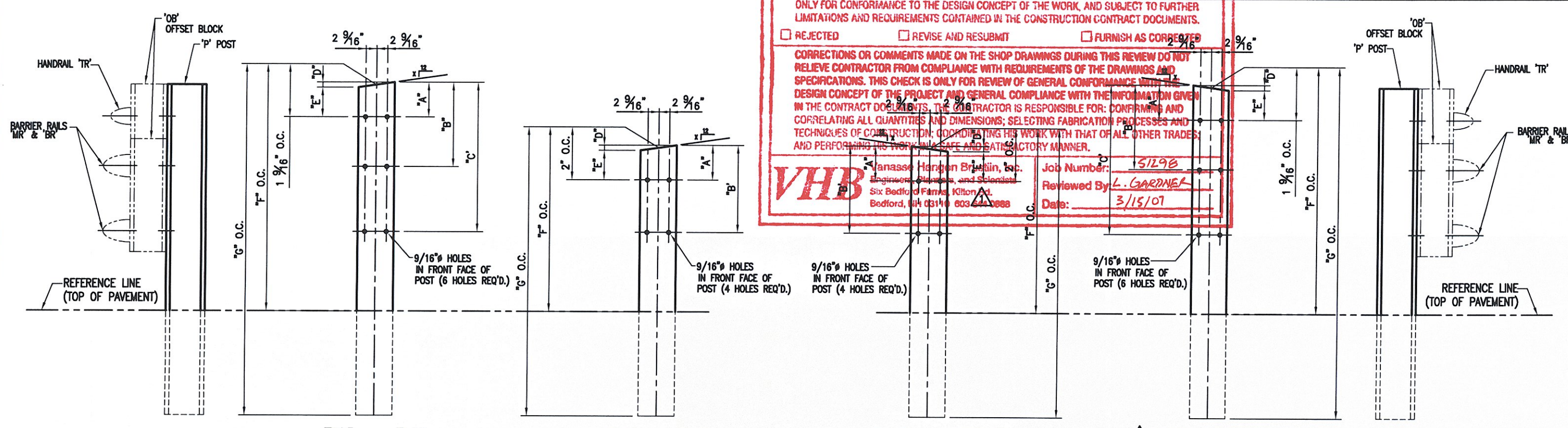


SHOP DRAWING REVIEW

REVIEWED AS REQUIRED BY THE CONSTRUCTION CONTRACT DOCUMENTS AND APPROVED, BUT ONLY FOR CONFORMANCE TO THE DESIGN CONCEPT OF THE WORK, AND SUBJECT TO FURTHER LIMITATIONS AND REQUIREMENTS CONTAINED IN THE CONSTRUCTION CONTRACT DOCUMENTS.
 REJECTED REVISE AND RESUBMIT FURNISH AS CORRECTED

CORRECTIONS OR COMMENTS MADE ON THE SHOP DRAWINGS DURING THIS REVIEW DO NOT RELIEVE CONTRACTOR FROM COMPLIANCE WITH REQUIREMENTS OF THE DRAWINGS AND SPECIFICATIONS. THIS CHECK IS ONLY FOR REVIEW OF GENERAL CONFORMANCE WITH THE DESIGN CONCEPT OF THE PROJECT AND GENERAL COMPLIANCE WITH THE INFORMATION GIVEN IN THE CONTRACT DOCUMENTS. THE CONTRACTOR IS RESPONSIBLE FOR DOWNSIZING AND CORRELATING ALL QUANTITIES AND DIMENSIONS, SELECTING FABRICATION PROCESSES AND TECHNIQUES OF CONSTRUCTION, AND POSTING THE WORK WITH THAT OF ALL OTHER TRADES AND PERFORMANCE OF THE WORK IN A MANNER.

VHB Jameson-Henderson Engineering, Inc.
 Six Bedford Park, Bedford, PA 15026
 Job Number: 152192
 Reviewed By: L. GARDNER
 Date: 3/15/07



**POST DETAIL CHART FOR SE APPROACH
CURB CONDITION**

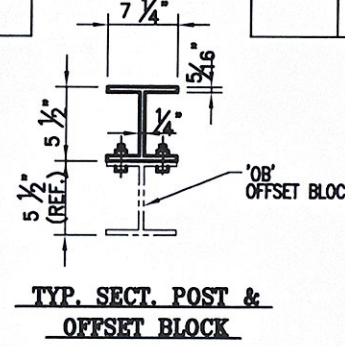
POST No.	QTY.	OFFSET BLOCK MTG. DIMENSIONS						BEV	
		A	B	C	D	E	F (O.C.)		G (O.C.)
P1L	1	1 7/8"	1'-1 5/16"	2'-6 7/16"	9/16"	1 1/4"	3'-11 5/16"	6'-6"	15/16
P2L	1	1 7/8"	11 9/16"	2'-3 7/16"	9/16"	1 1/4"	3'-8 3/8"	6'-6"	15/16
P3L	1	1 7/8"	9 7/8"	2'-0 1/2"	9/16"	1 1/4"	3'-5 3/8"	6'-6"	15/16
P4L	1	1 7/8"	8 3/16"	1'-9 1/2"	9/16"	1 1/4"	3'-2 7/16"	6'-6"	15/16
P5L	1	2 1/8"	1'-11 11/16"		1/4"	1 7/8"	2'-8 13/16"	6'-0"	3/8
P6L	1	2 1/8"	11 15/16"		1/4"	1 7/8"	2'-5 1/8"	6'-0"	3/8
P7L	1	2 1/8"	10 3/16"		1/4"	1 7/8"	2'-3 7/16"	6'-0"	3/8

**POST DETAIL CHART FOR SW APPROACH
CURB CONDITION**

POST No.	QTY.	OFFSET BLOCK MTG. DIMENSIONS						BEV	
		A	B	C	D	E	F (O.C.)		G (O.C.)
P1R	1	1 7/8"	1'-1 5/16"	2'-6 7/16"	9/16"	1 1/4"	3'-11 5/16"	6'-6"	15/16
P2R	1	1 7/8"	11 9/16"	2'-3 7/16"	9/16"	1 1/4"	3'-8 3/8"	6'-6"	15/16
P3R	1	1 7/8"	9 7/8"	2'-0 1/2"	9/16"	1 1/4"	3'-5 3/8"	6'-6"	15/16
P4R	1	1 7/8"	8 3/16"	1'-9 1/2"	9/16"	1 1/4"	3'-2 7/16"	6'-6"	15/16
P5R	1	2 1/8"	1'-11 11/16"		1/4"	1 7/8"	2'-8 13/16"	6'-0"	3/8
P6R	1	2 1/8"	11 15/16"		1/4"	1 7/8"	2'-5 1/8"	6'-0"	3/8
P7R	1	2 1/8"	10 3/16"		1/4"	1 7/8"	2'-3 7/16"	6'-0"	3/8

NOTE:
 2 CLAMPING BARS CB-01-H (#28598) PER POSTS P1-P4
 4 CLAMPING BARS CB-03-A (#19447) PER POSTS P1-P4
 4 CLAMPING BARS CB-03-A (#19447) PER POSTS P1-P4
 1/2" x 13 UNC S.S. BOLT x 1" LG. 'FB1', 1 1/16" O.D. x 17/32" I.D. x 3/32" THK ALUM WASHER 'FW1' (#15280 & # 19404) (16 PER POST)

NOTE:
 4 CLAMPING BARS CB-03-A (#19447) PER POSTS P5-P7
 4 CLAMPING BARS CB-03-A (#19447) PER POSTS P5-P7
 1/2" x 13 UNC S.S. BOLT x 25 (1") LG. 'FB1', 27 (1 1/16") O.D. x 13 (17/32") I.D. x 2 (3/32") THK ALUM WASHER 'FW1' (#15280 & # 19404) (8 PER POST)



ANODIZED
(SEE LIST FOR SPECIFICATIONS)

REV.	DESCRIPTION	DATE	BY	CHECKED	DATE	BY

BRIDGE No. 50
 PROJECT No. SHF 020-2 (32) ITEM No. 621.74

APPROVED: _____
 DRAWING

L.B. FOSTER COMPANY
 1016 GREENSTREE ROAD
 PITTSBURGH, PENNSYLVANIA 15220

FOR: A. D. ROSSI CORPORATION
 VERMONT AGENCY OF TRANSPORTATION
 TOWN OF WOODSTOCK, COUNTY OF WINDSOR
 3-LINE SEMI-ELLIP. ALUM. BRIDGE RAIL FOR US RTE 4 OVER THE
 OTTAWA/QUEBEC RIVER - POST DETAILS

MADE: CMS, DATE 01/20/07, JOB No. A80361 CUST. No.
 CHECKED: DATE 01/25/07, DRAWING LBA REV. No. ONE