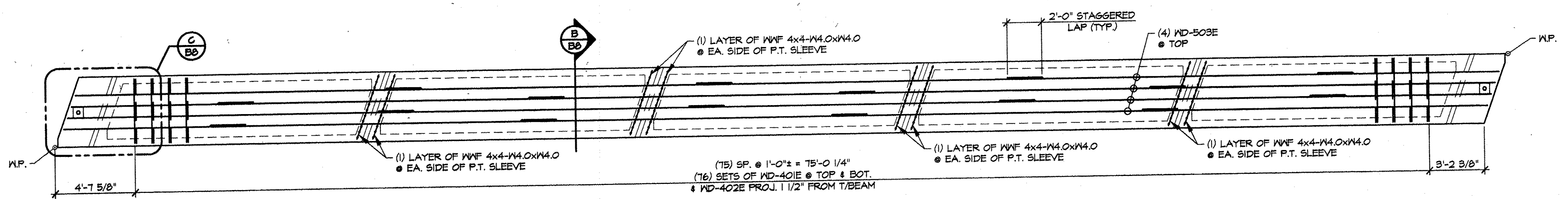
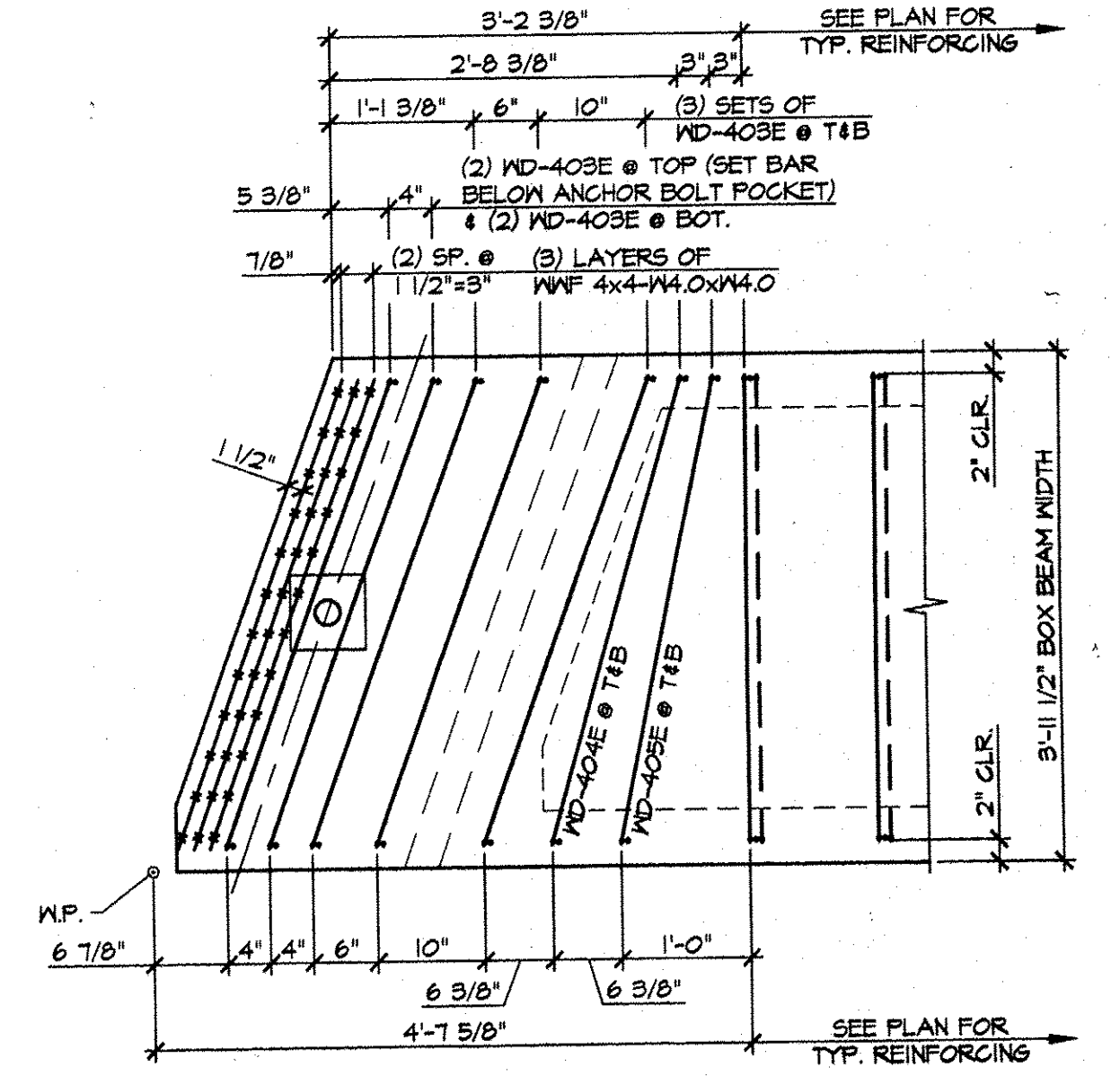


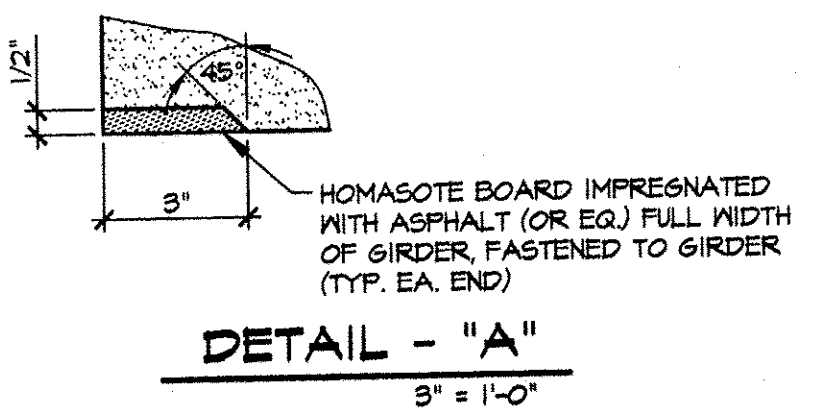
1 DIMENSIONAL PLAN VIEW IN FORM
 B8
 1/4" = 1'-0"



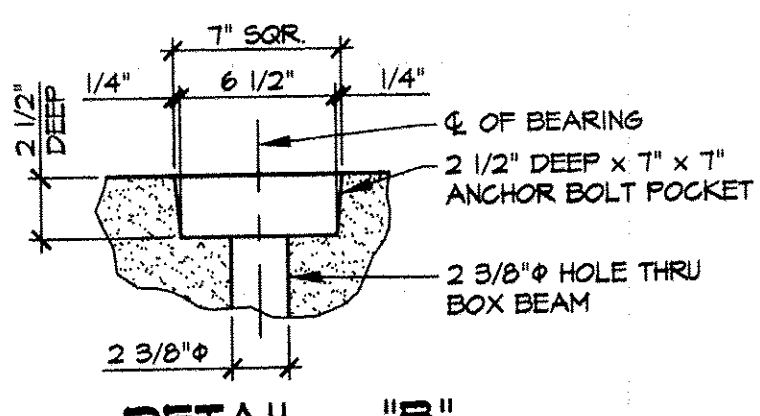
2 REINFORCING PLAN VIEW IN FORM
 B8
 1/4" = 1'-0"



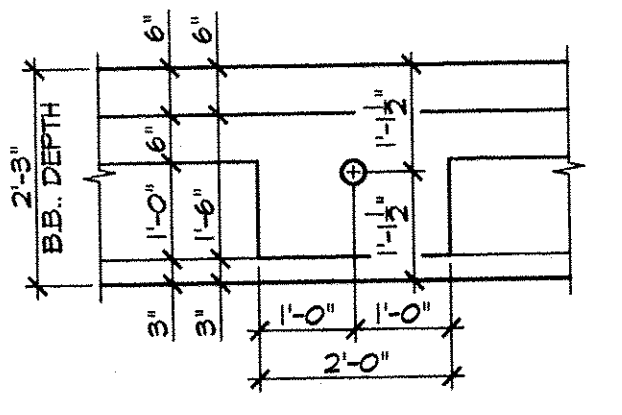
C END BLOCK REINFORCING PLAN
 B8
 3/4" = 1'-0"



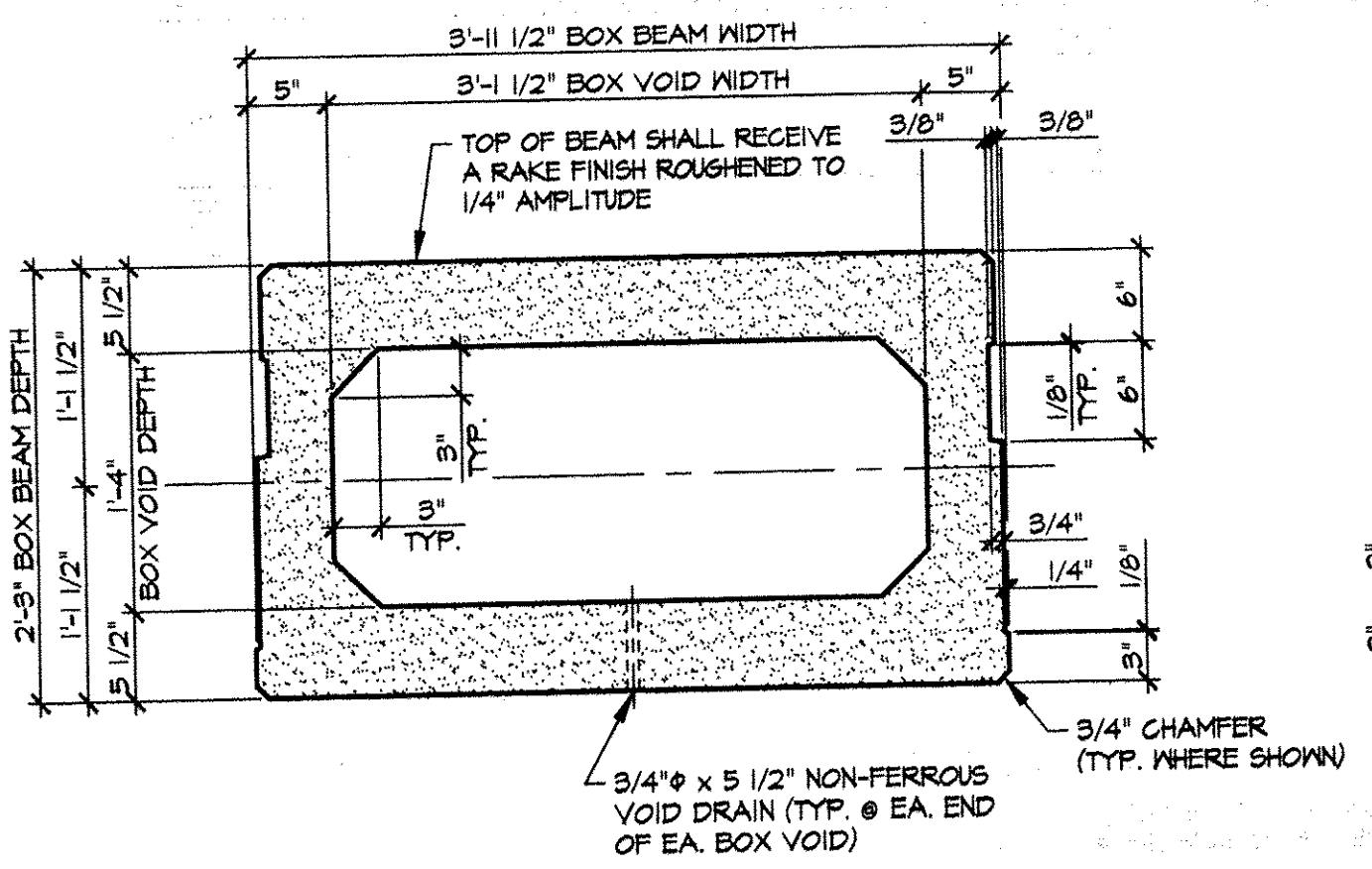
DETAIL - "A"
 3" = 1'-0"



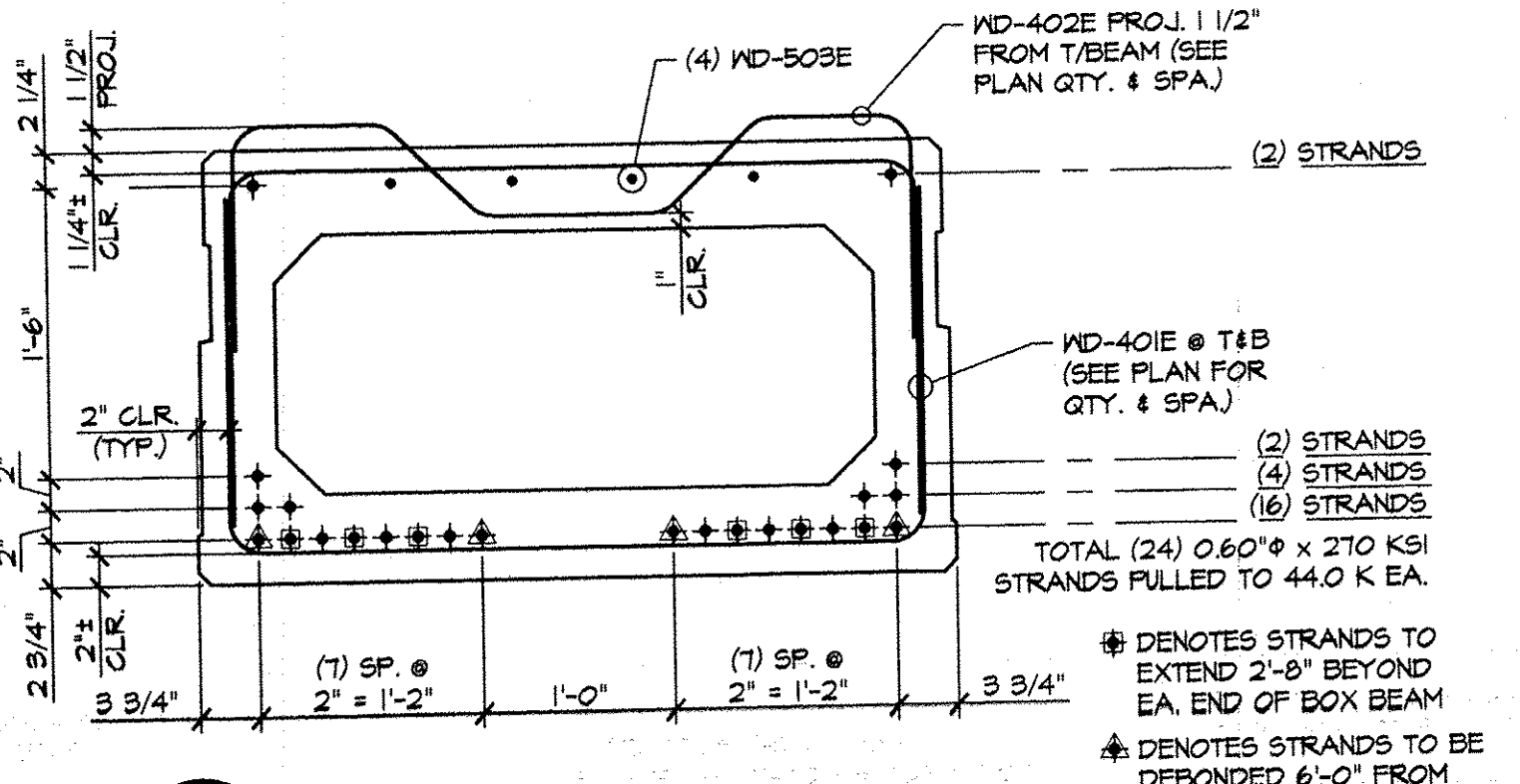
DETAIL - "B"
 1 1/2" = 1'-0"



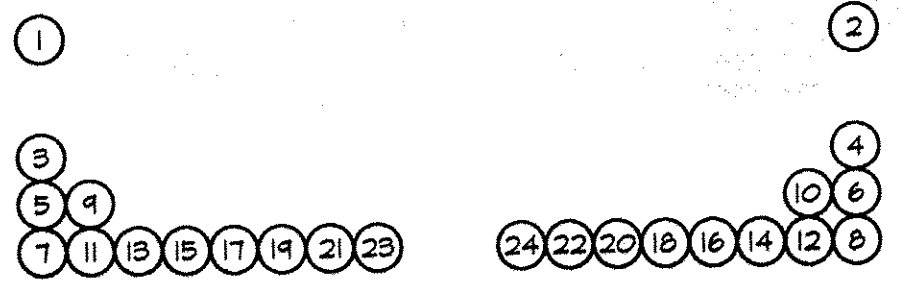
DETAIL - "D"
 1/2" = 1'-0"



A DIMENSIONAL SECTION
 B8
 1" = 1'-0"



B REINFORCING SECTION
 B8
 1" = 1'-0"



DETENSIONING SCHEDULE
 N.T.S.

- 3-4-01 REVISE QUANTITY OF BOX BEAMS
- 3-4-01 REVISE QUANTITY OF BOX BEAMS
- 2-13-01 REVISE BOX VOIDS & STRAND PATTERN

APPROVAL STAMP:

MARK: **WD-2** QTY.: **5** WT.: **24.92 T** VOL.: **16.05 cy**

MATERIAL LIST / BEAM			
ITEM	MARK	DESCRIPTION	QTY.
1	401E	#4 BENT BAR (EPOXY COATED)	152
2	402E	#4 BENT BAR (EPOXY COATED)	76
3	403E	#4 BENT BAR (EPOXY COATED)	20
4	404E	#4 BENT BAR (EPOXY COATED)	4
5	405E	#4 BENT BAR (EPOXY COATED)	4
6			
7			
8			
9	503E	#5 x 82'-6" (E.C. W/ (4) 2'-0" STAGGERED LAPS)	4
10		WWF 4x4-W4.0xM4.0 [1'-11 1/2" x 3'-10"]	14
11			
12			
13			
14			
15		3'-1 1/2" x 1'-4" x 14'-10 5/8" BOX VOID	1
16		3'-1 1/2" x 1'-4" x 15'-4 3/8" BOX VOID	4
17		3/4" x 5 1/2" NON-FERROUS VOID DRAIN	10
18		DOUBLE 1/2" STRAND LIFTING LOOPS	4
19			

J.P. CARRARA & SONS INC.
 Precast & Prestress Manufacturer
 2464 GAGE ST., WOODSTOCK, VERMONT 05091 Phone: (802)388-6361 Fax: (802)388-9010

T. BUCK CONSTRUCTION, INC.
 CONTRACTOR
 AUBURN, MAINE

DATE: JAN. 9, 2007
 SCALE: NOTED

STATE OF VERMONT A.O.T.
 COUNTY OF WINDSOR

TOWN OF WOODSTOCK
 US ROUTE 4 OVER OTTAUQUECHEE RIVER
 BRIDGE NO. 50 PROJECT NO. BHP 020-2(32)

CHKD: D.F. DFTM: B.L.
 JOB NO: 23244-06

P/S BOX BEAM DETAILS
 DWG. NO: **B8**