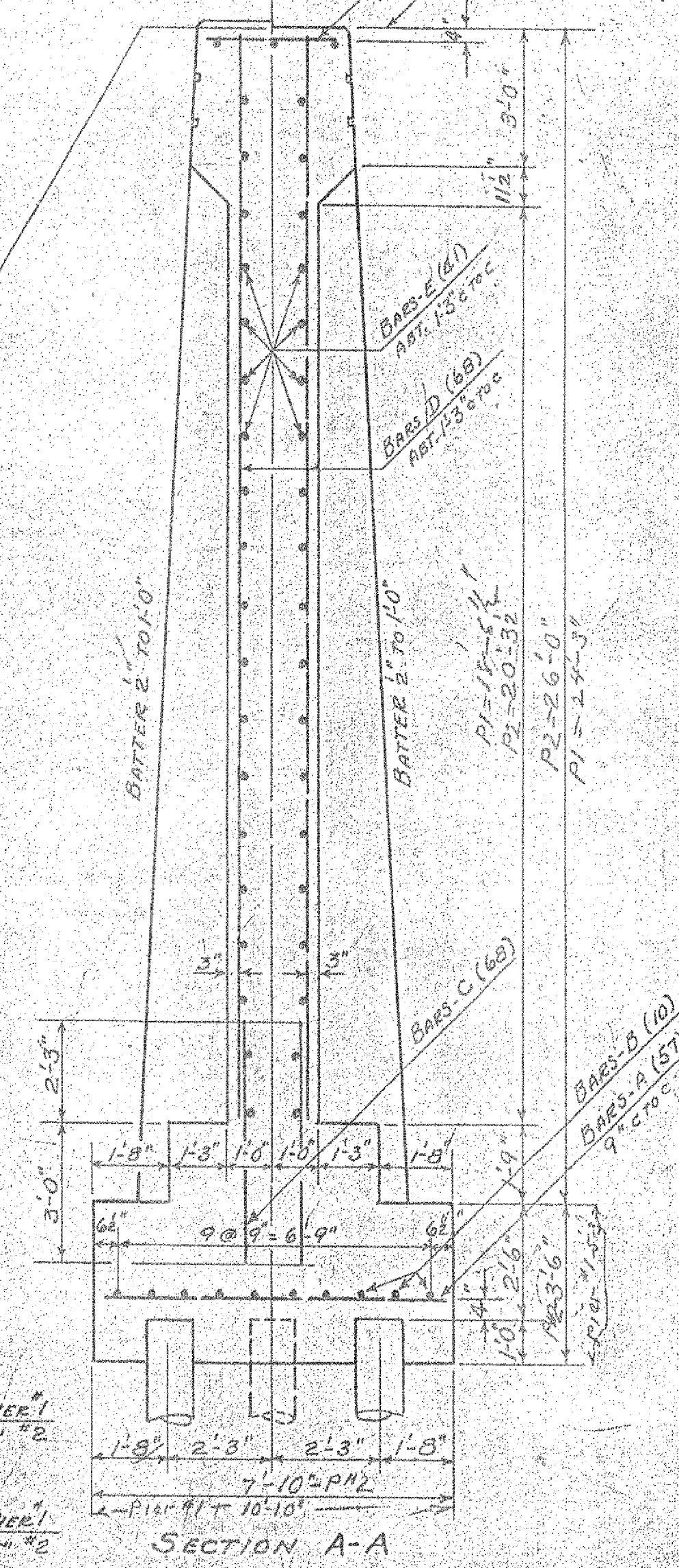
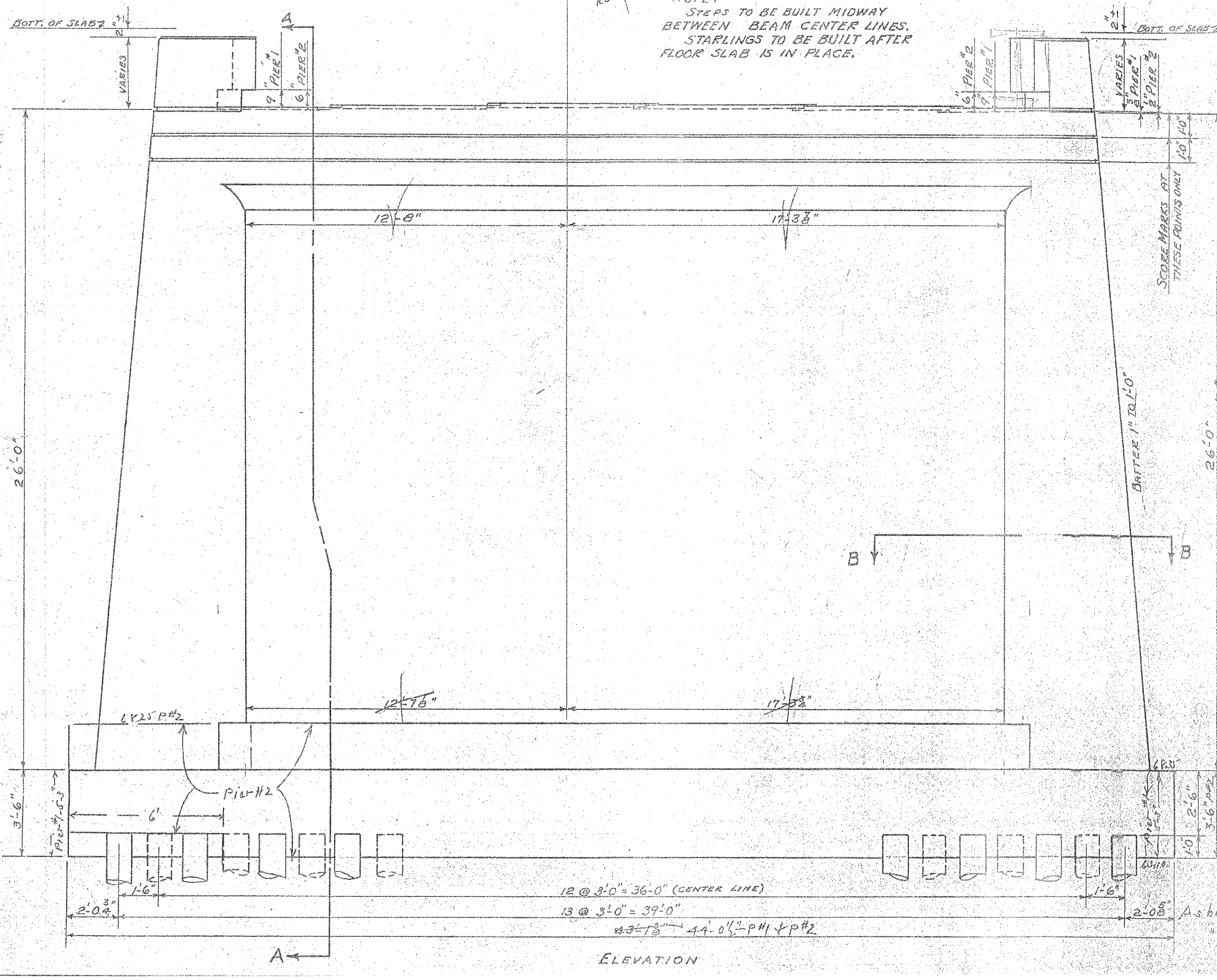


SECTION B-B

REINFORCING STEEL (FOR ONE PIER - 2 REQ'D.)

BAR SIZE	NO. REQ'D.	LENGTH	DETAIL
A	57	7'-3"	STRAIGHT
B	10	42'-6"	"
C	68	5'-3"	"
D	68	24'-0"	"
E	41	33'-6"	"
F	38	18'-0"	" BEND TO FIT IN FIELD
G	27	3'-2"	STRAIGHT
H	10	5'-0"	"

NOTE:
STEPS TO BE BUILT MIDWAY BETWEEN BEAM CENTER LINES. STAIRLINGS TO BE BUILT AFTER FLOOR SLAB IS IN PLACE.



SECTION A-A

NOTE:
PILES TO BE DRIVEN TO A CAPACITY OF 18 TONS EACH LENGTH OF PILES FOR ESTIMATING PURPOSES ONLY ASSUMED TO BE 20' EACH.

DETAILS OF PIERS #1 & #2
MARBLE BRIDGE
WOODSTOCK
P.W.A. DOCKET-Vt. 1049-F

ESTIMATED QUANTITIES

	PIER #1	PIER #2
STRUCTURE EXCAVATION	100 CY	1300 CY
CONCRETE CLASS B	151	152
REINFORCING STEEL	4257 LB	4257 LB
TIMBER PILING	820 LF	820 LF

Surveyed by
Designed by H.E. SLACK
Drawn by H.E. SLACK
Traced by D.W.P.
Checked by
Series SA No. 42-1937
Sheet 5 of 5

EXISTING PLANS ON THIS SHEET ORIENT THE BRIDGE WITH POSITIVE STATIONING EAST TO WEST. PIER #1 ON THIS SHEET (EAST PIER) REPRESENTS PIER #2 ON THE 2006 PLANS. SIMILARLY, PIER #2 ON THIS SHEET IS EQUIVALENT TO PIER #1 ON THE 2006 PLANS.

VHB Vanasse Hangen Brustlin, Inc.

PROJECT NAME WOODSTOCK
PROJECT NO. BHF 020-2 (32)
SHEET 56 OF 71