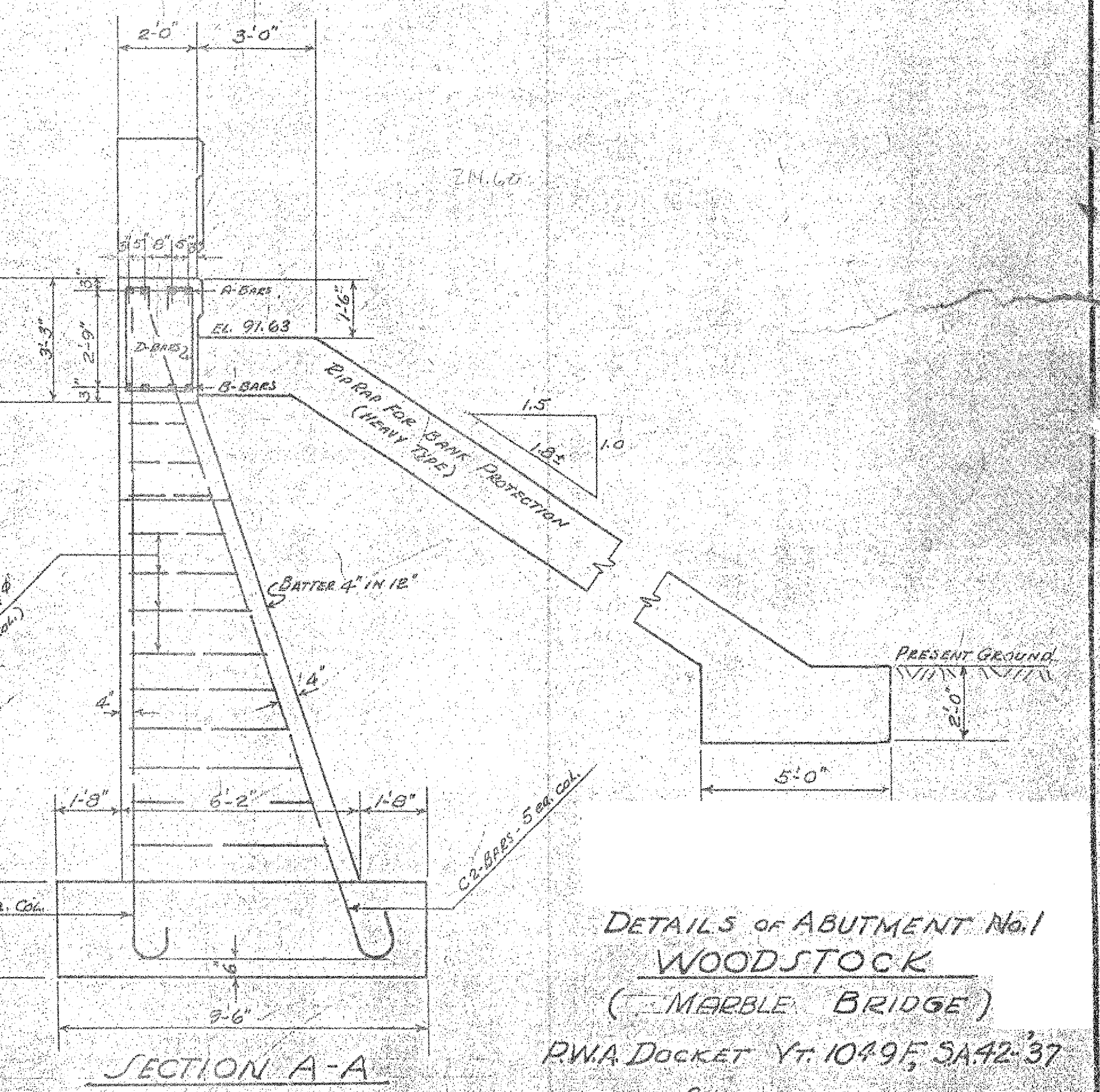
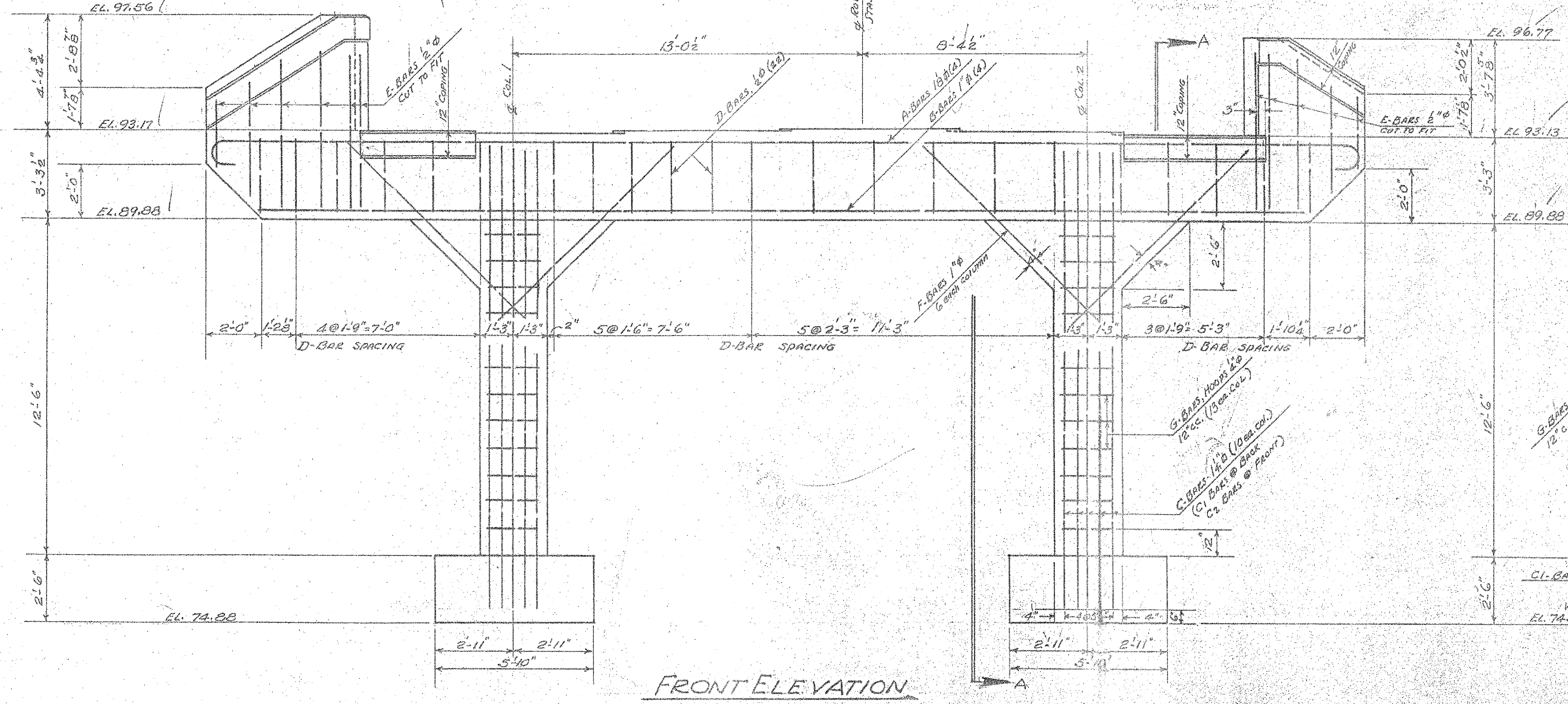
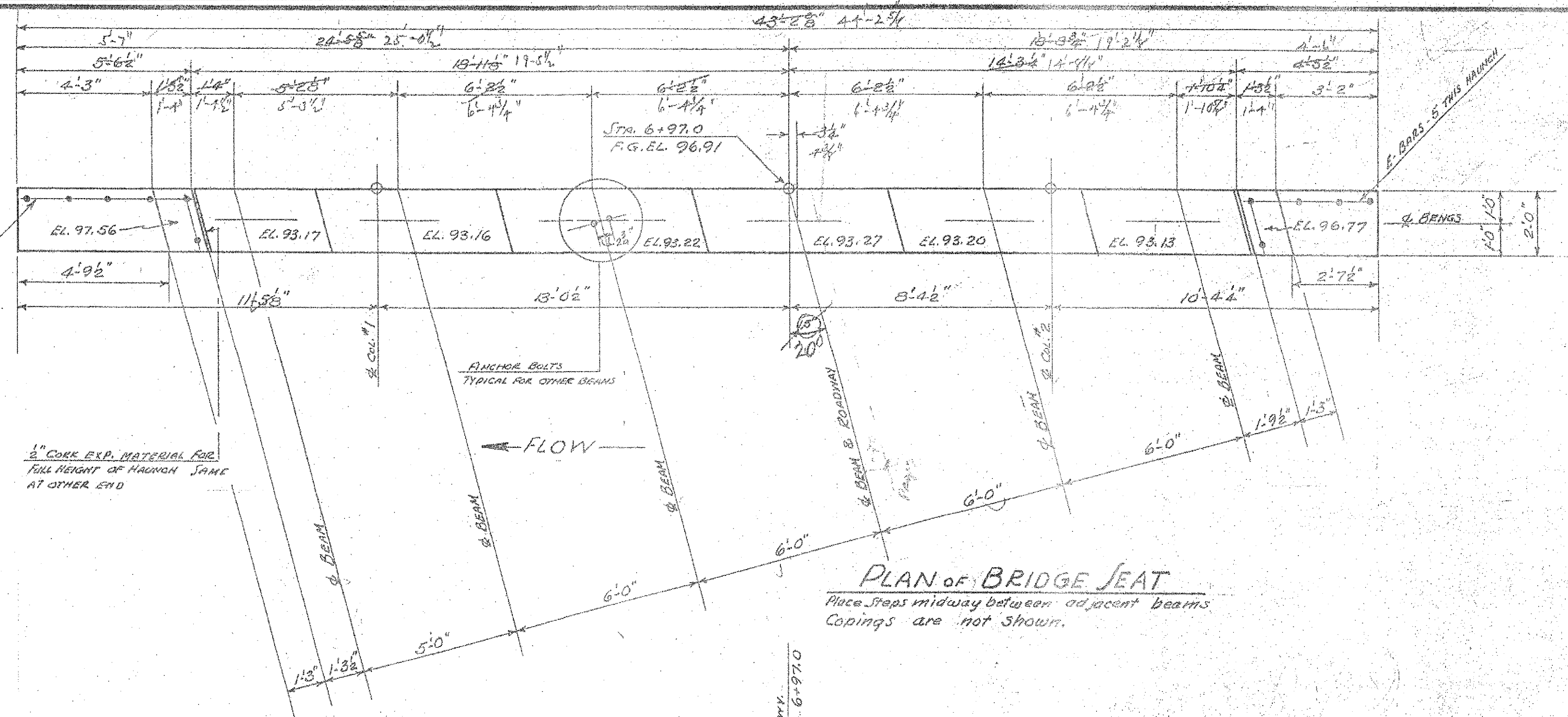


REINFORCING STEEL

MARK	REQD.	SIZE	TOTAL LGTH	SHAPE
A	4	1 1/8"	45'-4"	
B	4	1 1/8"	39'-0"	STRAIGHT
C1	10	1 1/8"	19'-9"	
C2	10	1 1/8"	19'-9"	
D	22	1 1/8"	0'-3"	
E	11	1 1/8"	6'-0"	STRAIGHT
F	12	1 1/8"	10'-0"	STRAIGHT
G	26	1/2"	312'-0" FOR 26 BARS	VARY FROM 8'-0" TO 16'-0" LONG - STRAIGHT

NOTE: BAR DIMENSIONS ARE TO 1/8" BARS.



**DETAILS OF ABUTMENT No. 1
WOODSTOCK
(MARBLE BRIDGE)**
RWA DOCKET Yr. 1049F, SA42-37
Scale 3/8 inch = 1 foot

ESTIMATED QUANTITIES

COMMON EXCAVATION INCL. BORROW	592 C.Y.
STRUCTURE EXCAVATION	35 C.Y.
CHANNEL EXCAVATION	303 C.Y.
CONCRETE CLASS "A"	34 C.Y.
REINFORCING STEEL	3907 LBS.
RIP RAP FOR BANK PROT. (HEAVY TYPE)	310 C.Y.

Surveyed by	J.G.G.
Designed by	J.G.G.
Drawn by	J.G.G.
Traced by	D.W.P.
Checked by	H.G.H.
Series P.W.A. No. 1049F	SA 42-37
Sheet 3 of 4	

EXISTING PLANS ON THIS SHEET ORIENT THE BRIDGE WITH POSITIVE STATIONING EAST TO WEST. THIS SHEET REPRESENTS THE OLD ABUTMENT #1 DETAILS (EAST ABUTMENT) WHICH IS THE NEW ABUTMENT #2 ON THE 2006 PLANS.

VHB Vanasse Hangen Brustlin, Inc.

PROJECT NAME WOODSTOCK
PROJECT NO. BHF 020-2 (32)
SHEET 54 OF 71