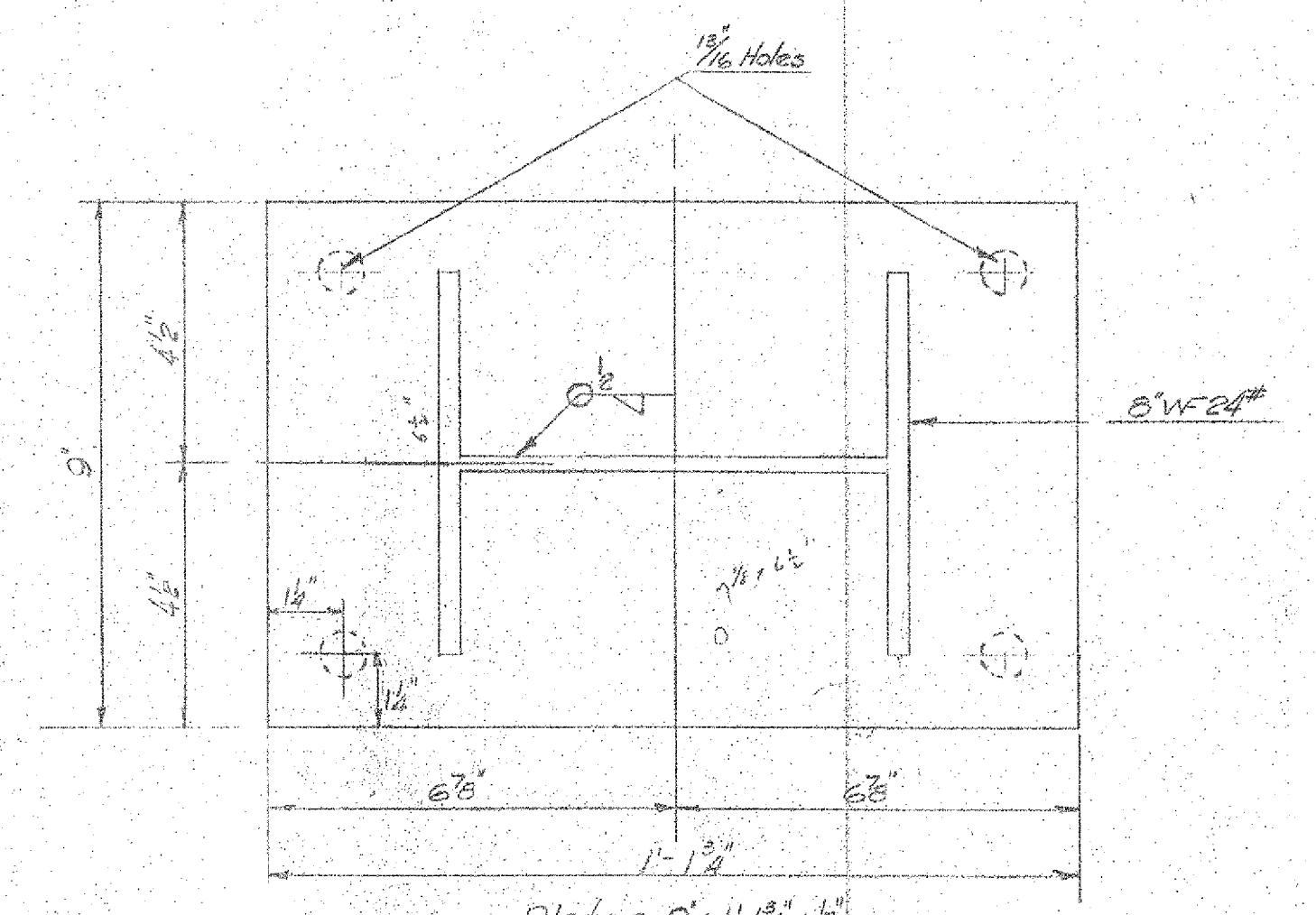
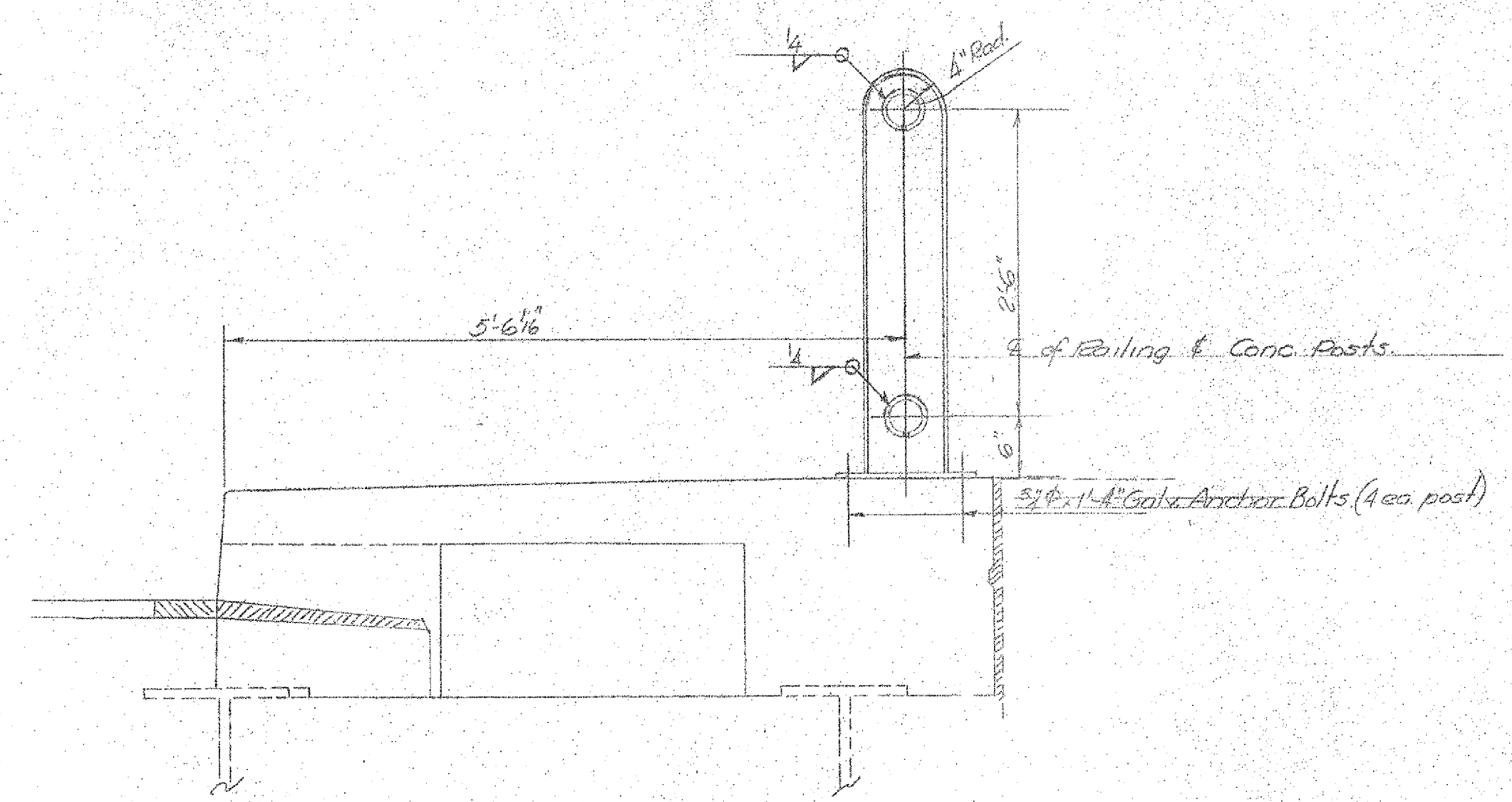


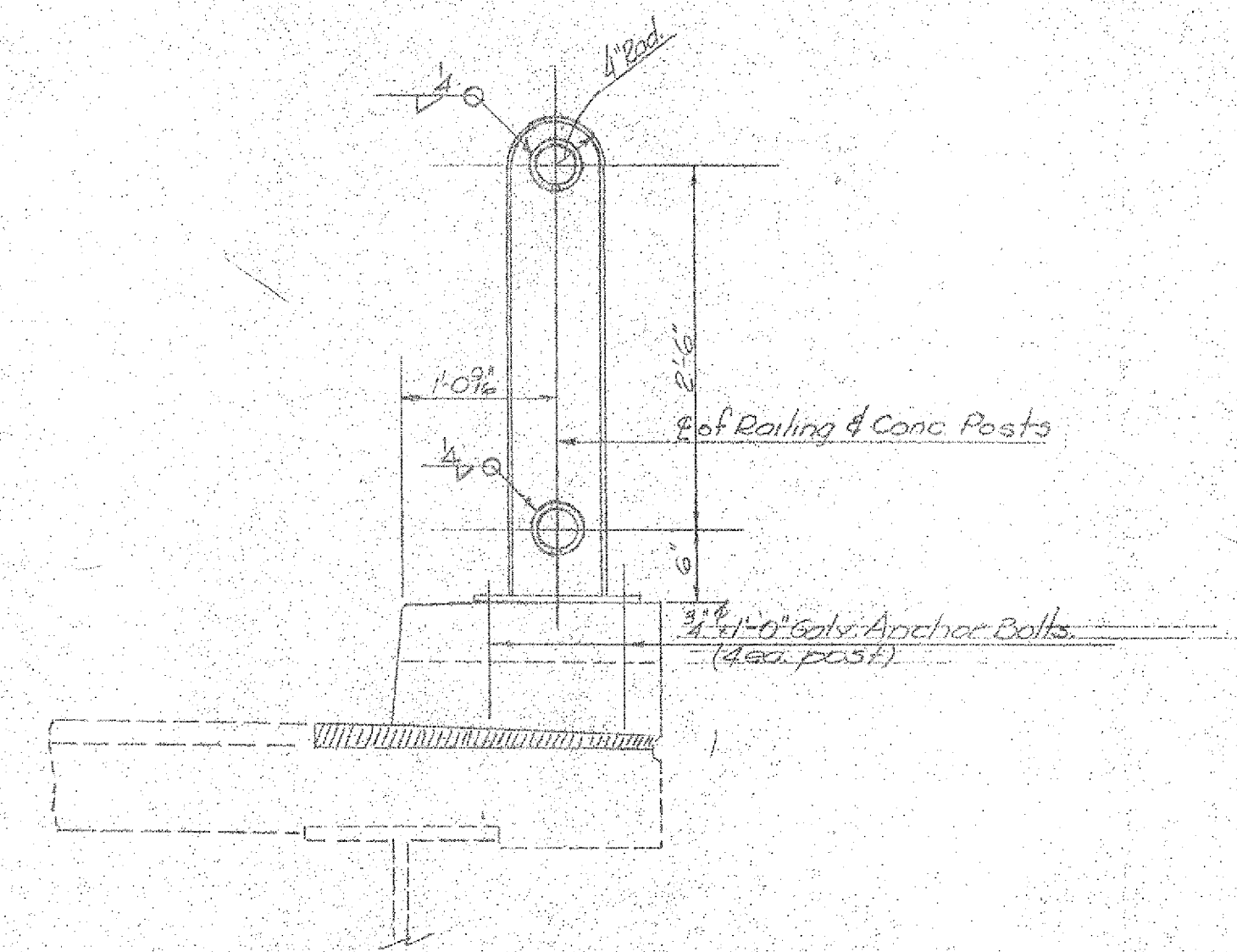
TYPICAL ELEVATION OF RAILING PANELS
not to scale



Plates 9\"/>



POST LOCATION ON SIDEWALK SIDE



POST LOCATION ON OPPOSITE SIDE

NOTES:
Collars to be split and spread to form an inside diameter of 4\"/>

Pipe & Spindle Railing — 15,785 #

STATE OF VERMONT
DEPARTMENT OF HIGHWAYS

TOWN OF WOODSTOCK
ROAD No. U.S. #4 BRIDGE No. _____
Revised Railing Details

SCALE Not to scale

SURVEYED BY _____
DRAWN BY H.W.S. CHECKED BY R.T.B.

PROJECT No. S.A.B.-1054
SHEET 2A OF 3