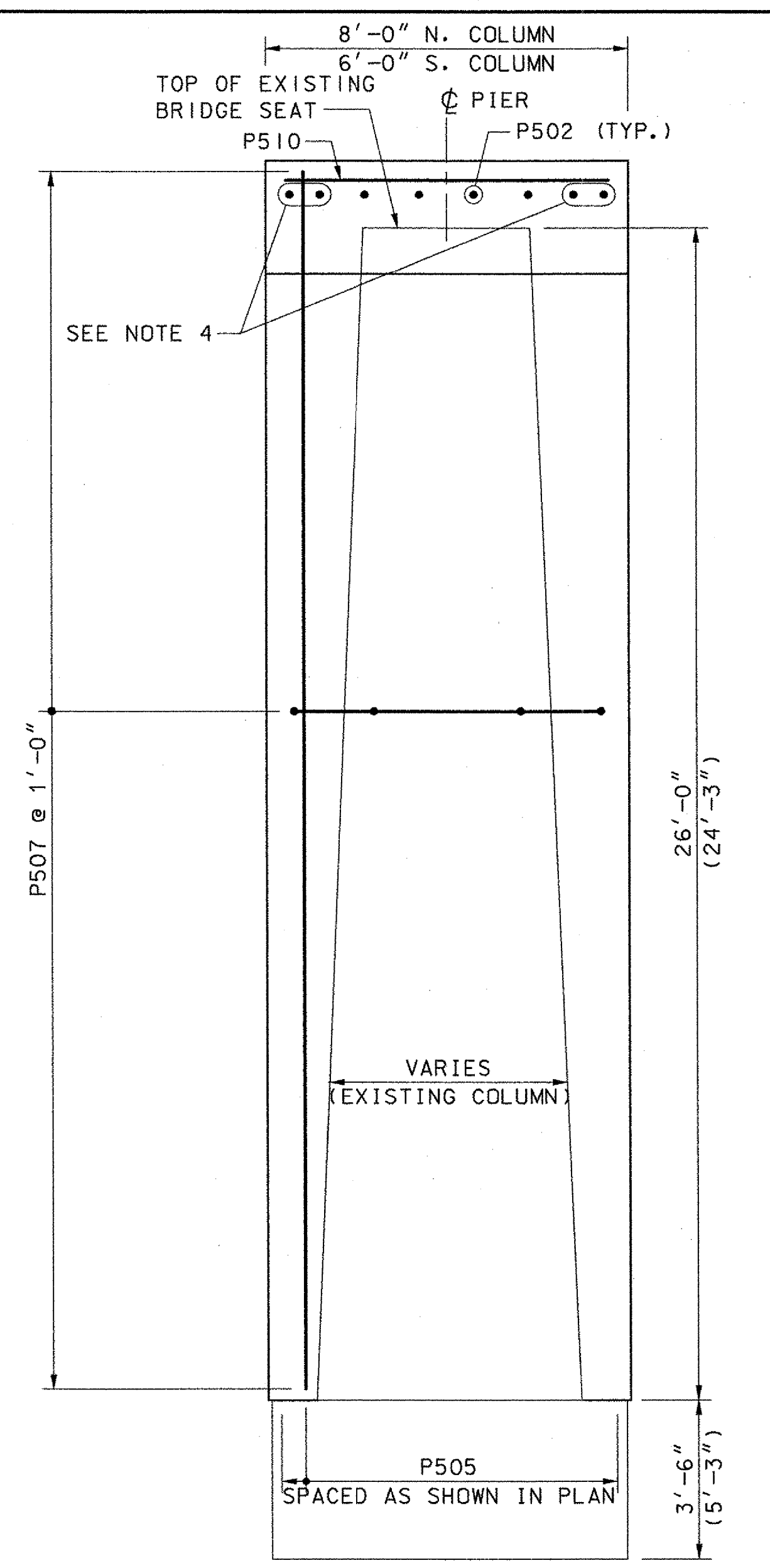
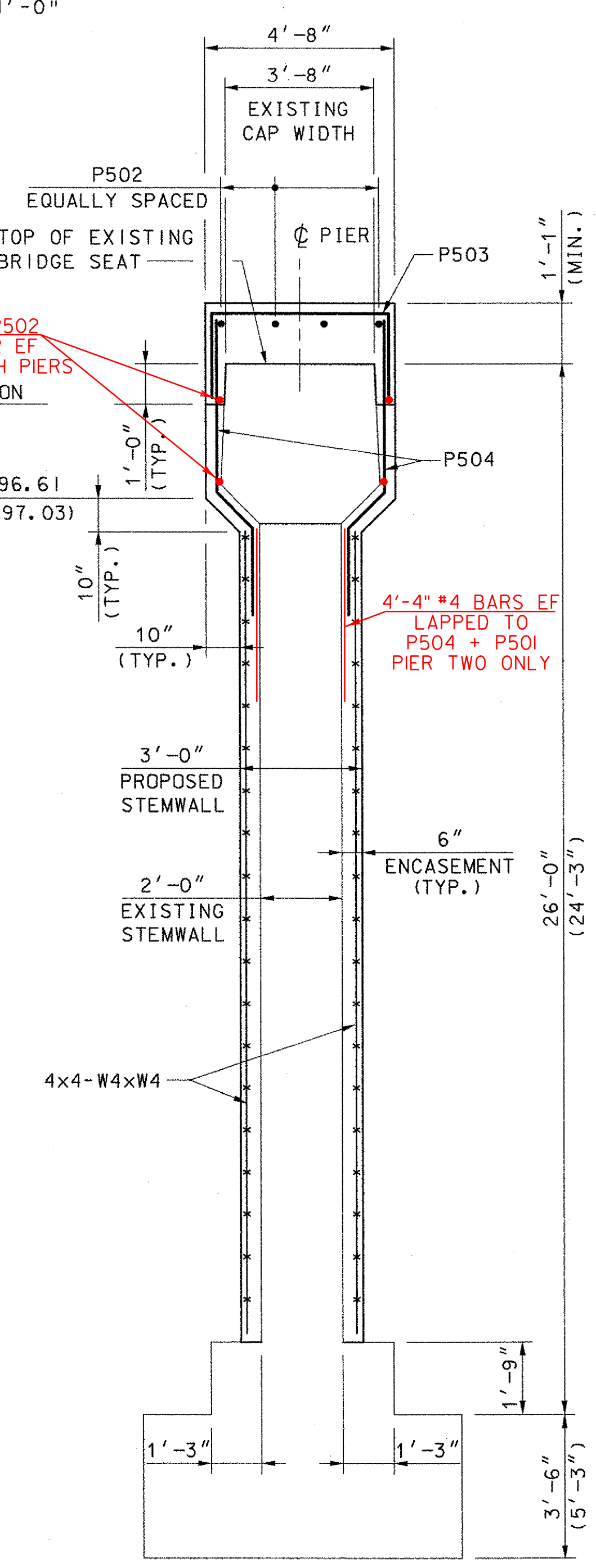


**NOTE:**  
 \* DASHED LINES INDICATE EXISTING PIER SURFACES PRIOR TO REMOVAL AND REPAIR AS SHOWN ON SHEET 40.



- NOTES:**
1. PIER NO. 1 SHOWN, PIER NO. 2 SHOWN IN PARENTHESES WHERE IT VARIES.
  2. PIER PREFIX FOR REINFORCING IS OMITTED FOR CLARITY. PREFIX IS CALLED OUT ON REINFORCING STEEL SCHEDULE.
  3. IT IS ANTICIPATED THAT THE PIER ENCASEMENT WILL BE COMPLETED FROM TOP OF FOOTINGS TO THE CONSTRUCTION JOINT UNDER TRAFFIC WITH THE EXISTING SUPERSTRUCTURE IN PLACE. THIS WILL REQUIRE THAT THE P504 BARS BE SPACED TO CLEAR THE EXISTING BEAMS AS DIRECTED BY THE ENGINEER.
  4. REUSE CUTOFFS FROM P510 AS SHOWN.

**STATE OF VERMONT  
 AGENCY OF TRANSPORTATION**

Town Of	WOODSTOCK	Bridge No.	50
Highway No.	U. S. ROUTE 4	Log Sta.	
		Surv. Sta.	
U. S. ROUTE 4 OVER OTTAUQUECHEE RIVER			
<b>PIER NO. 1 &amp; NO. 2</b>			
Designed By	L. S. GARDNER	Drawn By	B. J. MASSE
Checked By	Date	Bridge Design Supervisor	
J. T. KLEIN	9/06	M. A. COLGAN	Date 9/06
PROJECT	WOODSTOCK	PROJECT NO.	BHF 020-2 (32)
I.G.C. Info.			
Bridge Sheet No.	ZJ028PA3	Sheet	41 of 71