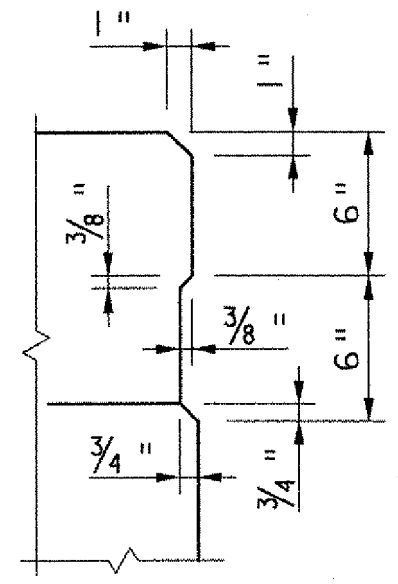
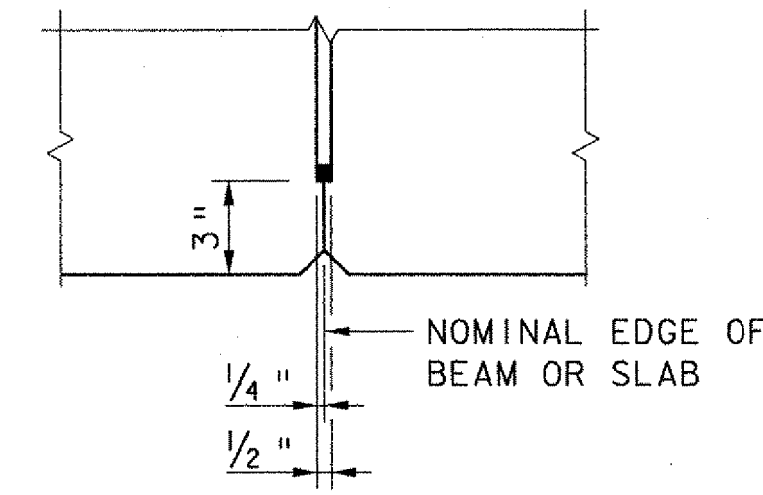


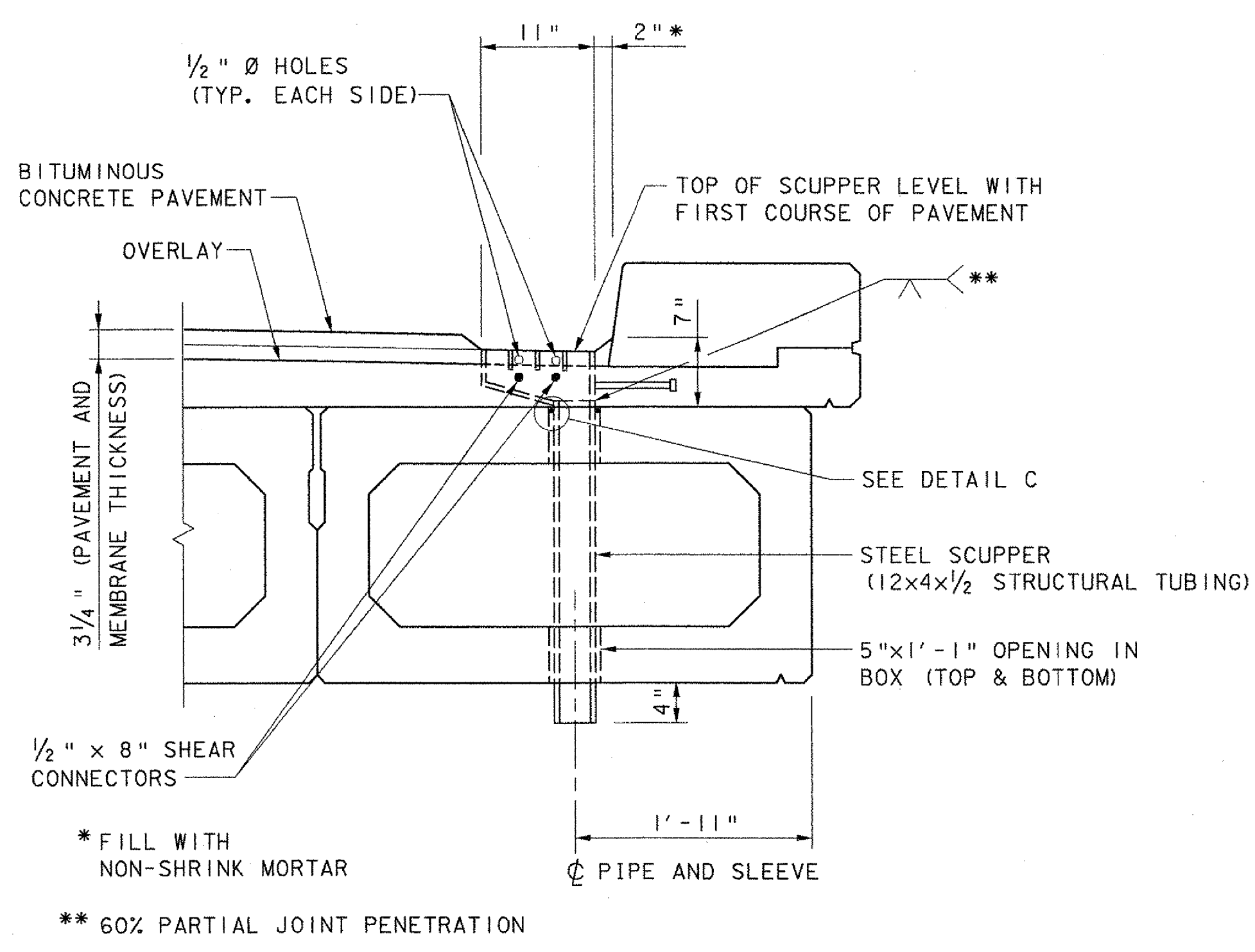
BOX BEAM SHEAR KEY
SCALE: 1 1/2" = 1'-0"



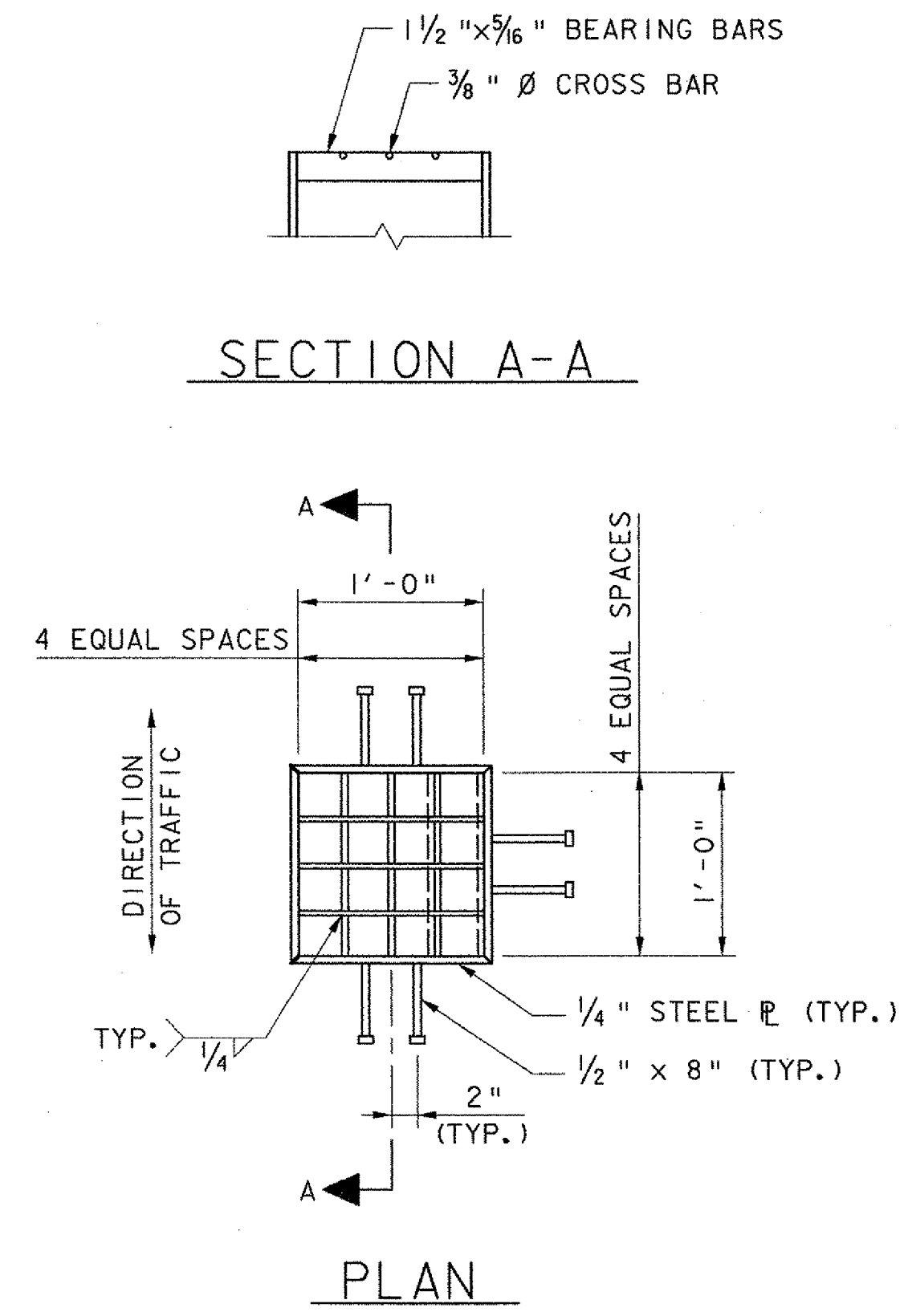
DETAIL A
SCALE: 3" = 1'-0"



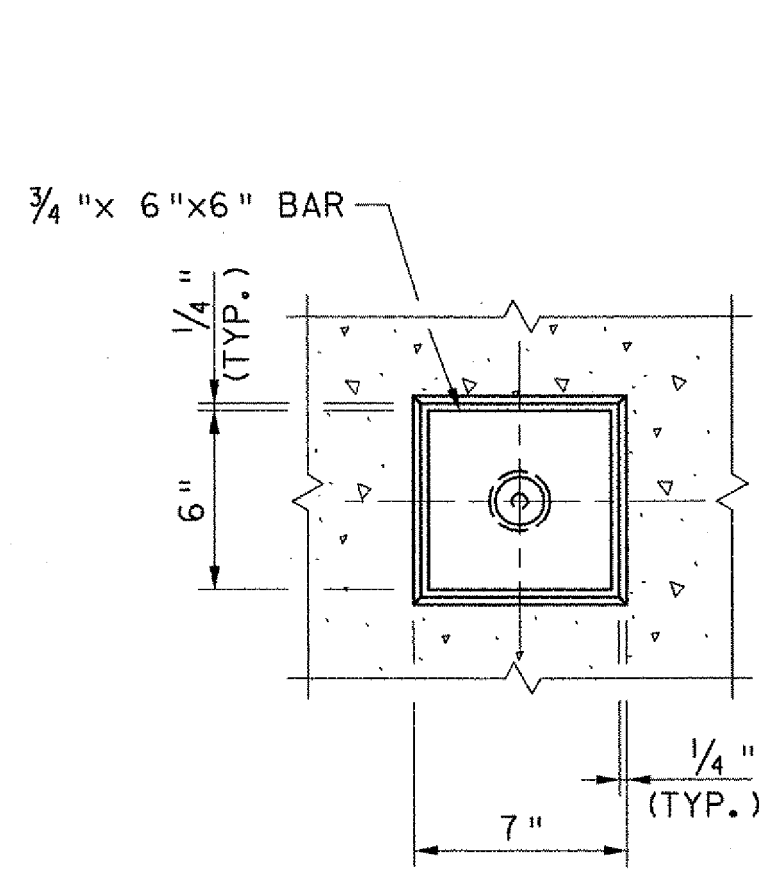
DETAIL B
SCALE: 3" = 1'-0"



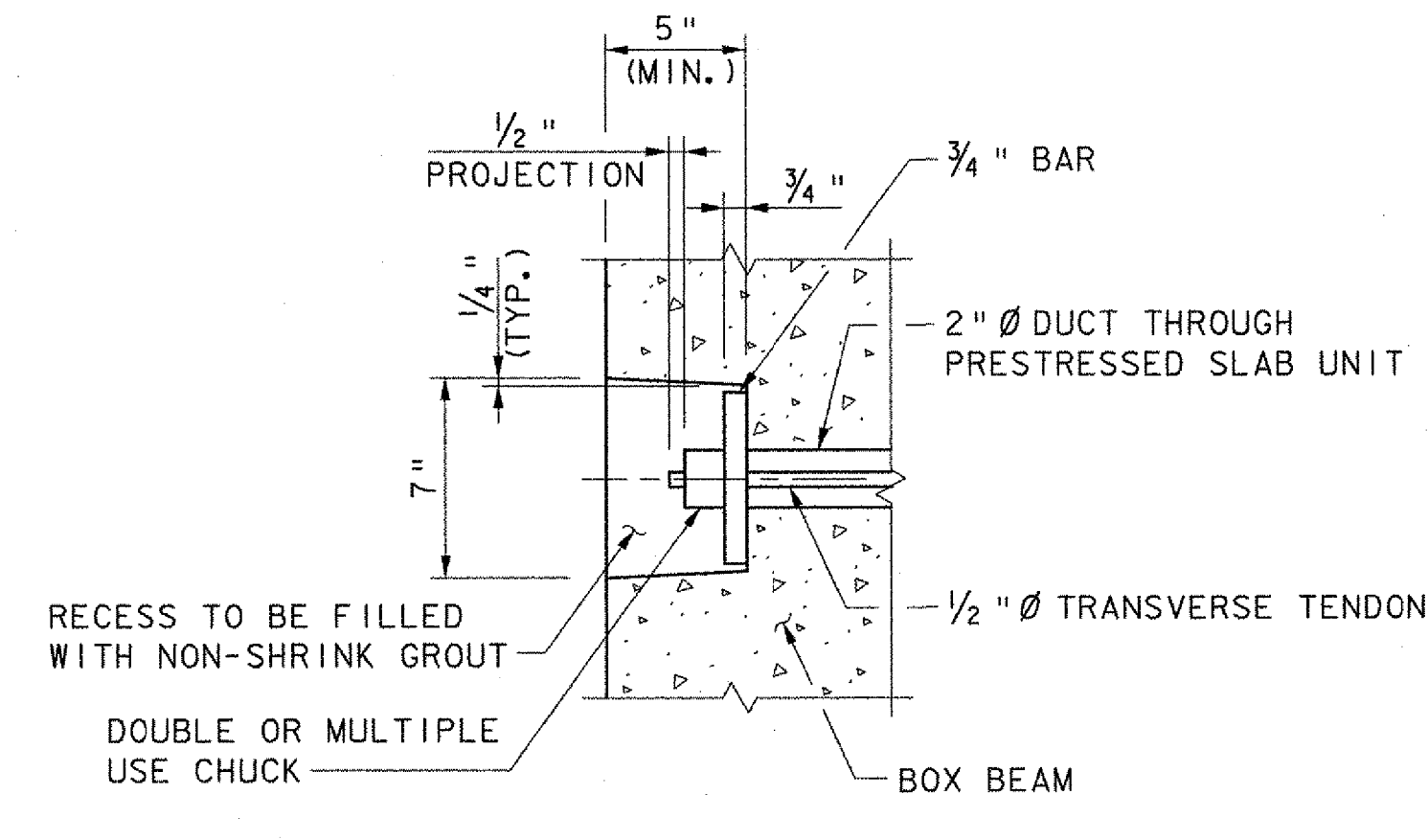
SECTION



SCUPPER DETAILS
(BRUSH CURB LOCATION SHOWN, SIDEWALK LOCATION SIMILAR)



ELEVATION



SECTION

TRANSVERSE TENDON DETAIL
SCALE: 3" = 1'-0"

SCUPPER NOTES

1. ALL PLATES SHALL BE 1/4" THICK AND SHALL CONFORM TO AASHTO M183 (ASTM A36).
2. THE DOWNSPOUT SHALL BE SCHEDULE 80 STEEL PIPE CONFORMING TO ASTM A501.
3. GRATING SHALL BE A COMMERCIAL HEAVY-DUTY GRATING WITH 1 1/2" x 5/16" BEARING BARS AND 3/8" Ø CROSS BARS.
4. THE CONTRACTOR SHALL SUBMIT FABRICATION DRAWINGS FOR SCUPPERS IN ACCORDANCE WITH SUBSECTION 105.03. DRAWINGS, DETAILS, AND WELDING PROCEDURES MUST BE SUBMITTED IN A COMPLETE PACKAGE. ALL FABRICATION OF STEEL COMPONENTS SHALL BE IN ACCORDANCE WITH APPLICABLE SECTIONS OF 506 AND 508. ALL COSTS FOR SCUPPERS WILL BE INCLUDED UNDER ITEM 510.21.
5. ALL COMPONENTS SHALL BE GALVANIZED AFTER FABRICATION IN ACCORDANCE WITH AASHTO M111 (ASTM A123).

STATE OF VERMONT AGENCY OF TRANSPORTATION

Town Of	WOODSTOCK	Bridge No.	50
Highway No.	U. S. ROUTE 4	Log Sta.	
		Surv. Sta.	
U. S. ROUTE 4 OVER OTTAUQUECHEE RIVER			
BOX BEAM DETAILS (2 OF 2)			
Designed By	K. G. KRETSCH	Drawn By	B. J. MASSE
Checked By	S. M. HODGDON	Bridge Design Supervisor	M. A. COLGAN
Date	9/06	Date	9/06
PROJECT	WOODSTOCK	PROJECT NO.	BHF 020-2 (32)
I.G.C. Info.			
Bridge Sheet No.	ZJ028BB1	Sheet	35 of 71