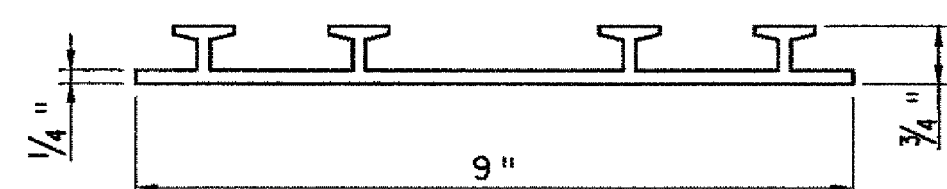
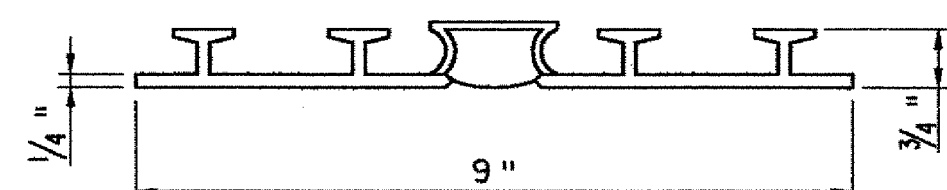


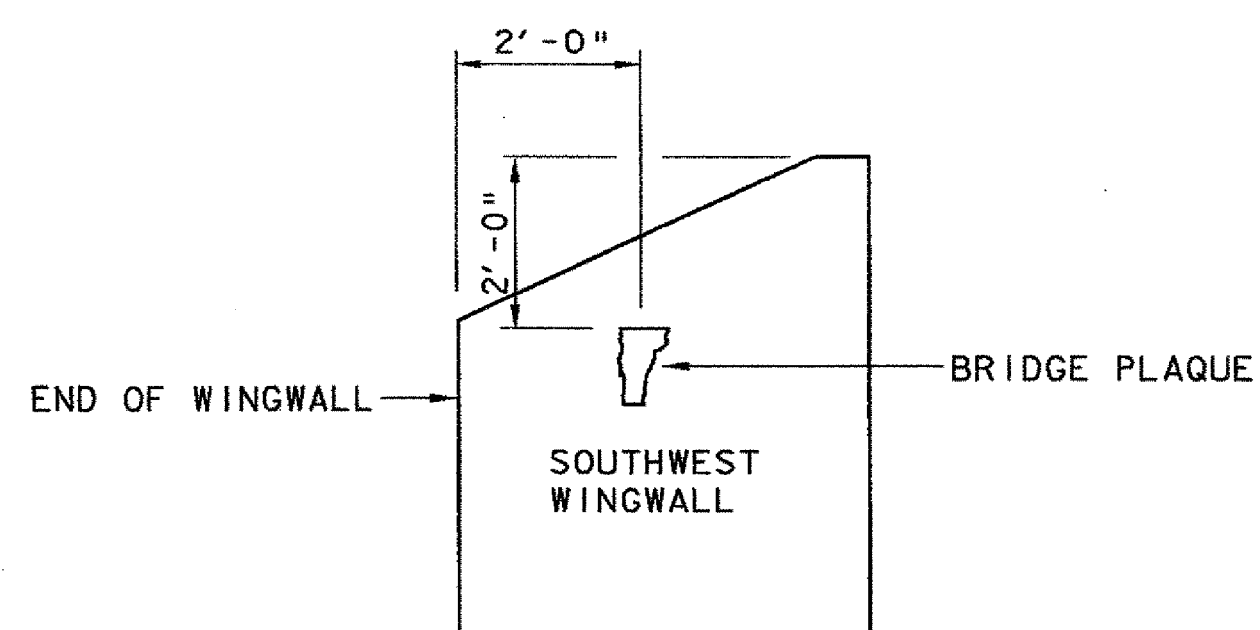
ASPHALTIC PLUG TYPE JOINT DETAIL
N. T. S.



P.V.C. WATERSTOP FOR CONSTRUCTION JOINTS
N. T. S.

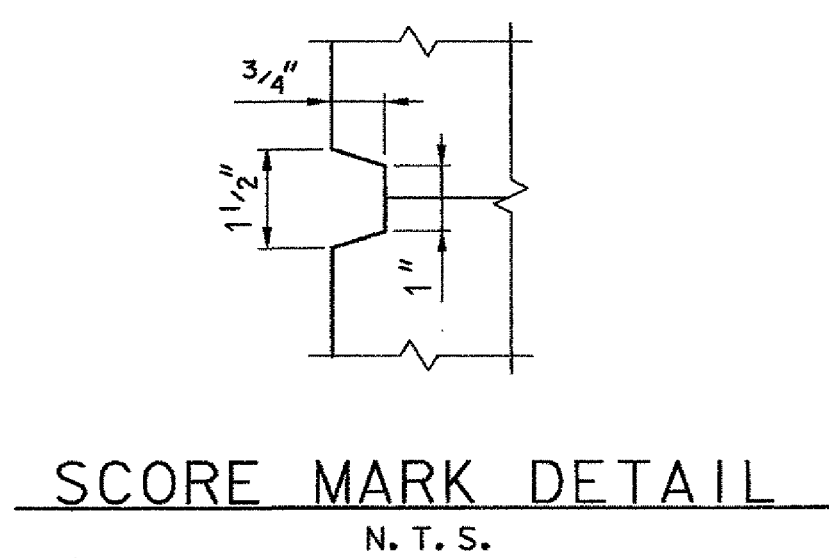


P.V.C. WATERSTOP FOR EXPANSION JOINTS
N. T. S.

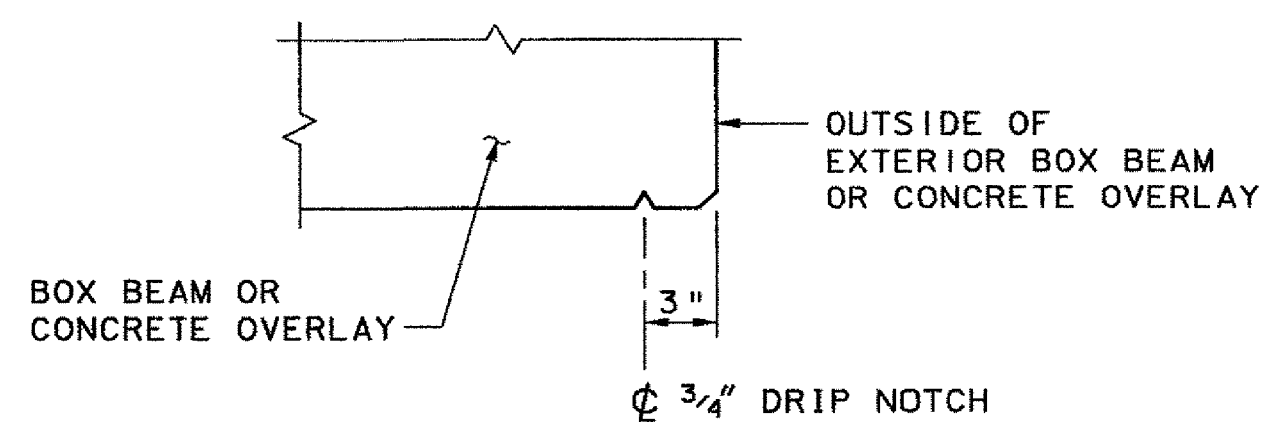


THE BRIDGE PLAQUE SHALL BE SUPPLIED BY THE AGENCY OF TRANSPORTATION AND INSTALLED BY THE CONTRACTOR AS SHOWN OR AS DIRECTED BY THE ENGINEER.

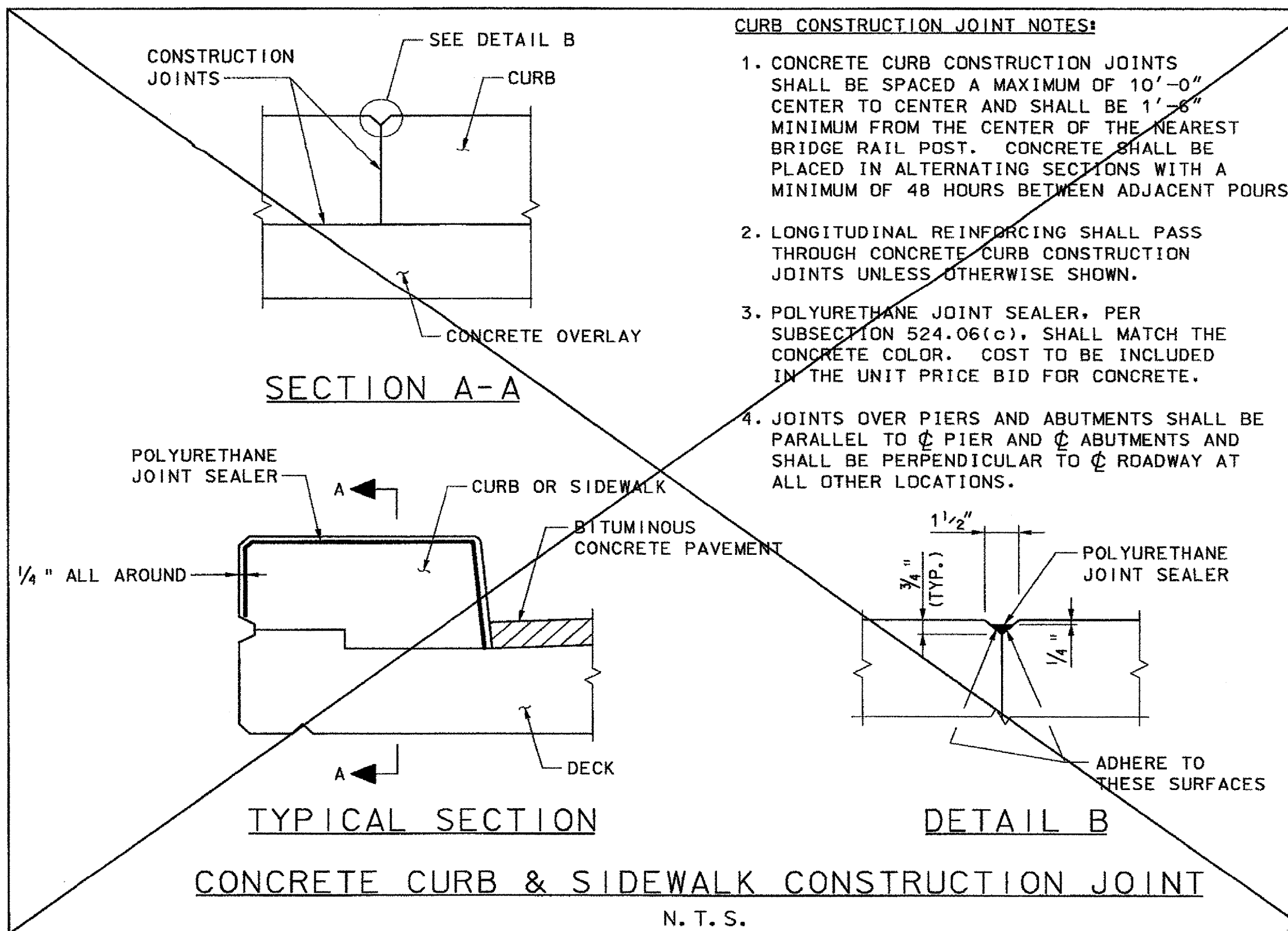
BRIDGE PLAQUE LOCATION
N. T. S.



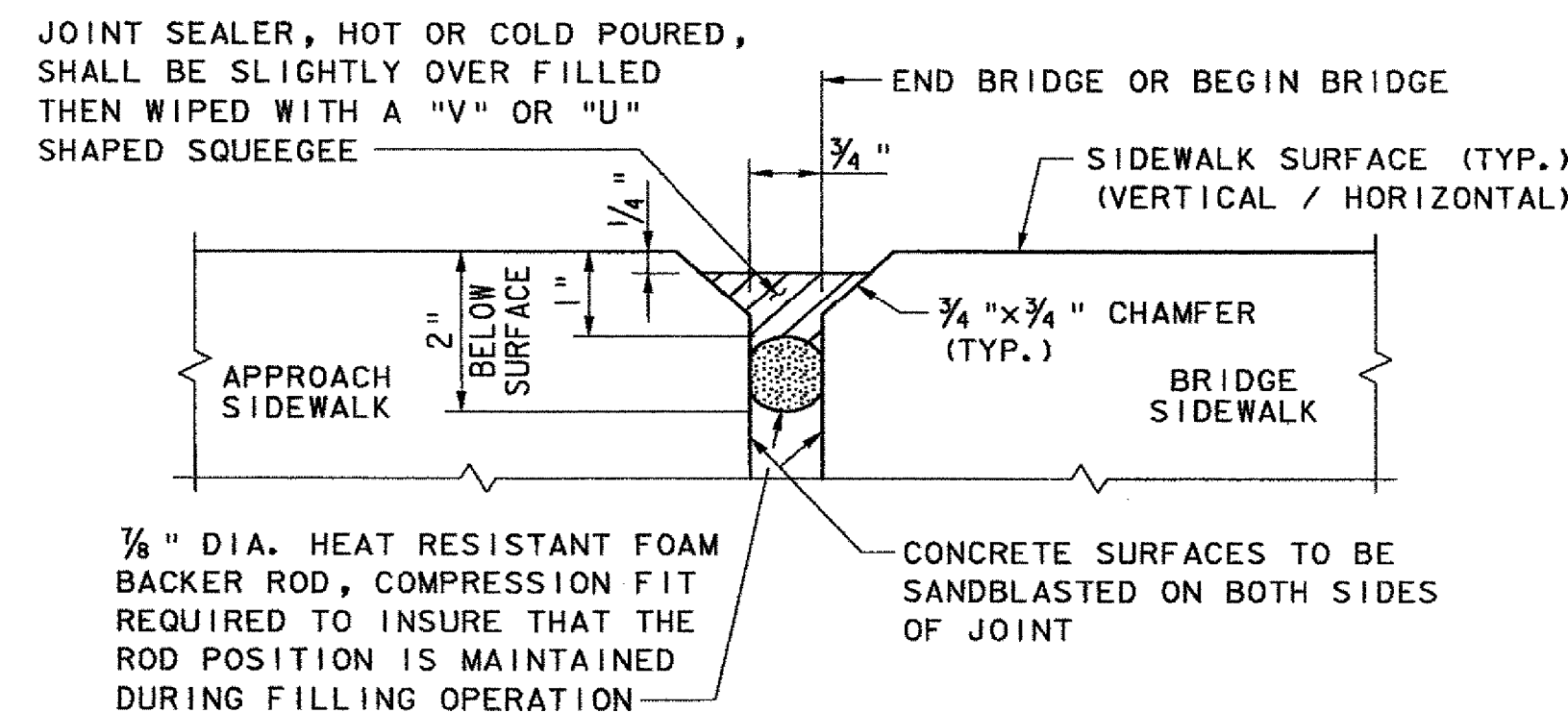
SCORE MARK DETAIL
N. T. S.



DRIP NOTCH DETAIL
N. T. S.



BRIDGE CURB AND BRIDGE SIDEWALK CONCRETE MAY BE POURED CONTINUOUSLY FOR THE FULL LENGTH OF THE BRIDGE WITHOUT THE USE OF JOINTS.



NOTES:

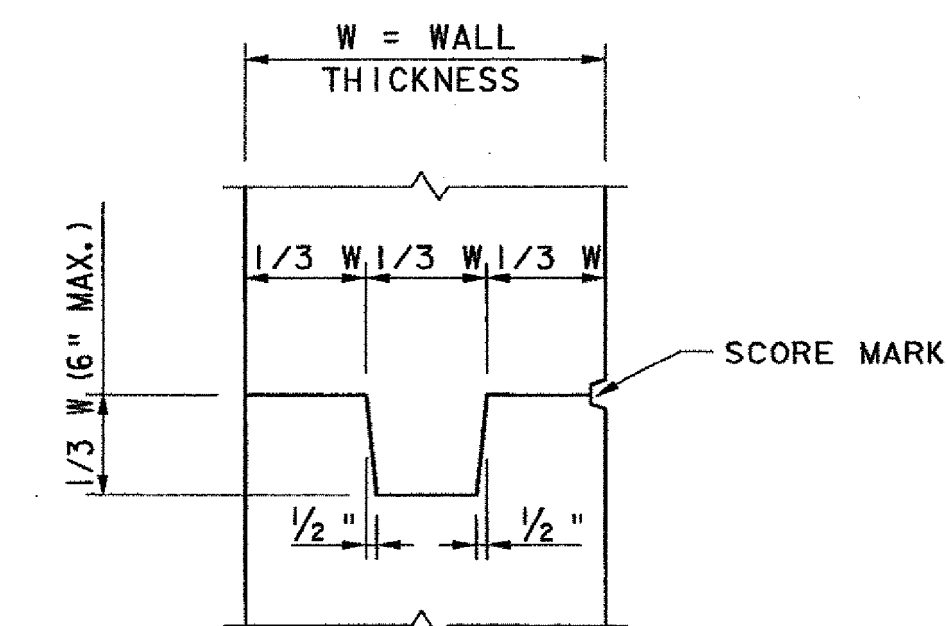
1. JOINT TO BE SEALED 24 HOURS PRIOR TO EXPOSURE TO GENERAL TRAFFIC, AND WITHIN 24 HOURS OF SAND BLASTING JOINT. SEE SPECIFICATION SECTION 524.
2. COST FOR SAND BLASTING AND FOR 1/8" DIA. BACKER ROD SHALL BE SUBSIDIARY TO UNIT PRICE FOR JOINT SEALER.
3. JOINT DETAIL SHALL APPLY FOR VERTICAL AND HORIZONTAL SURFACES OF JOINT.
4. ALL MATERIALS AND LABOR FOR SIDEWALK JOINTS SHALL BE PAID FOR UNDER THE ITEM 524.11, JOINT SEALER, HOT POURED, OR 524.13, JOINT SEALER, COLD POURED.

SIDEWALK EXPANSION JOINT DETAIL

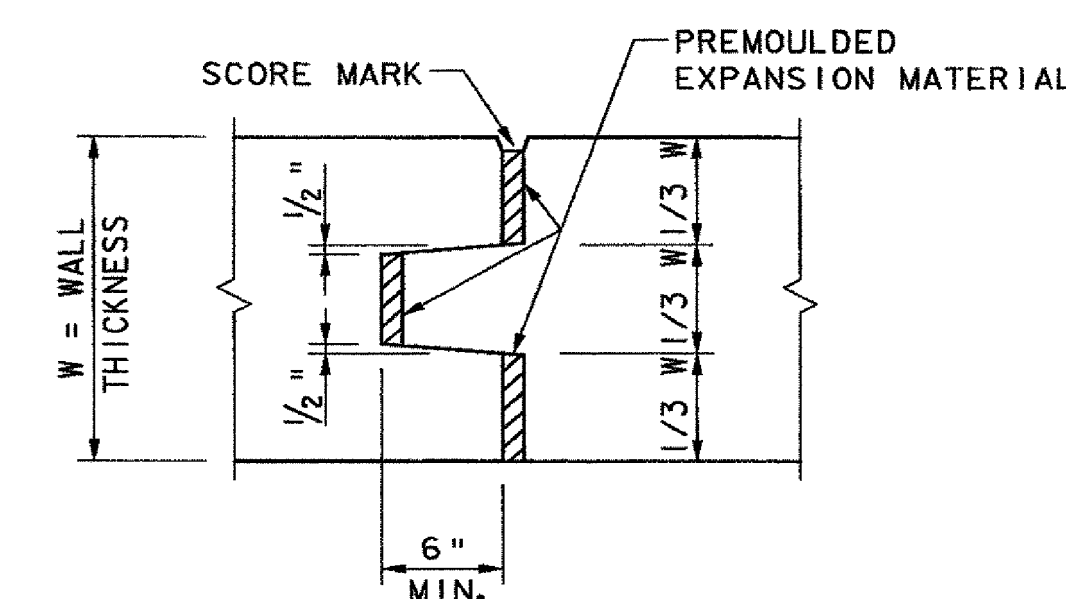
(AT BEGIN AND END BRIDGE ONLY)
N. T. S.

REVISION	DATE	BY
JOINT CHANGE	11/21/06	M. COLGAN

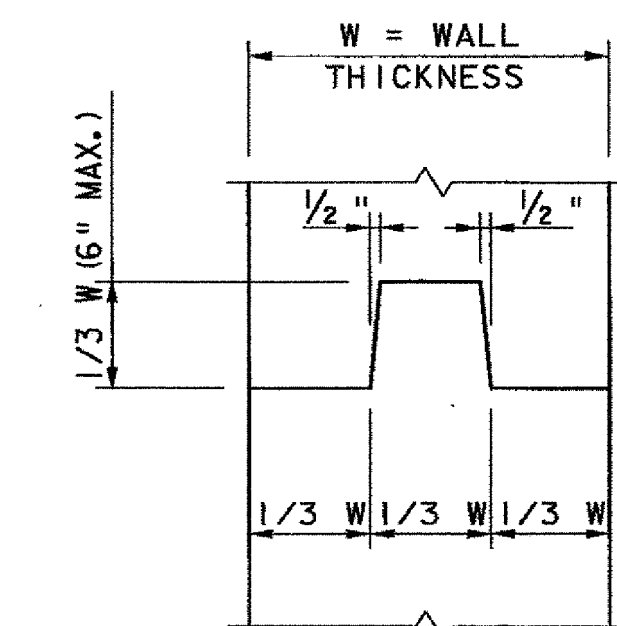
VHB Vanasse Hangen Brustlin, Inc.



TYPICAL CONCRETE CONSTRUCTION JOINT
N. T. S.



TYPICAL CONCRETE EXPANSION JOINT
N. T. S.



TYPICAL SHEAR KEY
N. T. S.

STATE OF VERMONT AGENCY OF TRANSPORTATION

Town Of	WOODSTOCK	Bridge No.	50
Highway No.	U. S. ROUTE 4	Log Sta.	
	U. S. ROUTE 4 OVER OTTAUQUECHEE RIVER	Surv. Sta.	
MISCELLANEOUS DETAILS			
Designed By	K. G. KRETSCH	Drawn By	B. J. MASSE
Checked By	M. A. COLGAN	Date	10/06
		Bridge Design Supervisor	M. A. COLGAN Date 10/06
PROJECT		WOODSTOCK	PROJECT NO. BHF 020-2 (32)
I.G.C. Info.		Bridge Sheet No. ZJO28DD2	Sheet 25 of 71