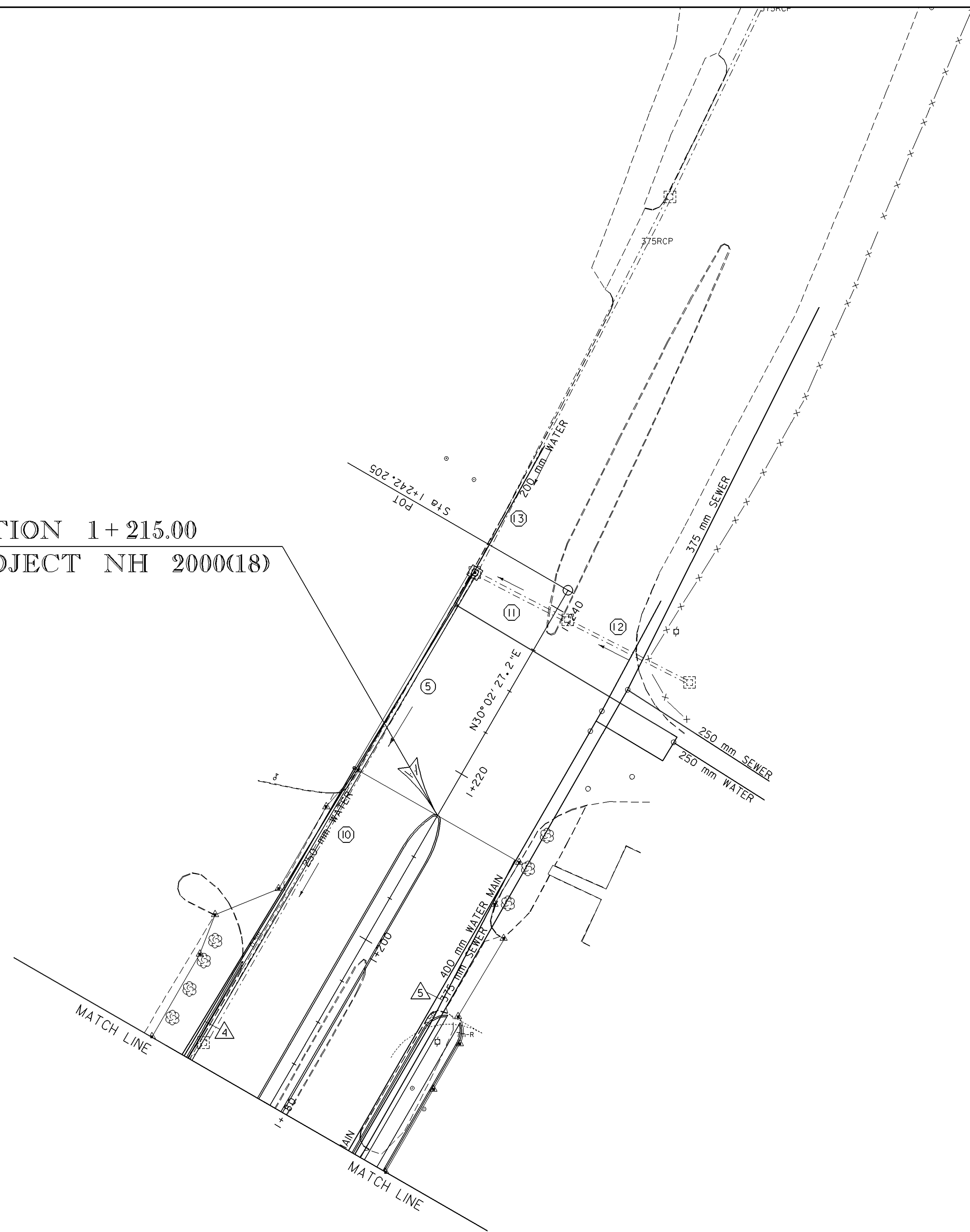


STATION 1+215.00
 END PROJECT NH 2000(18)

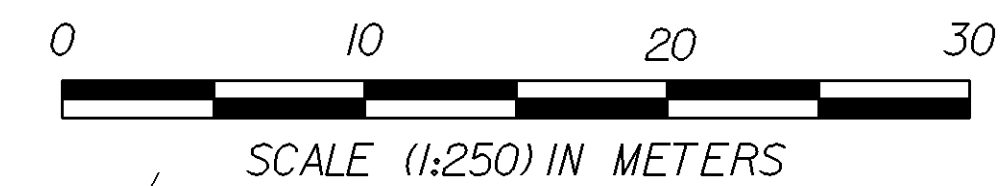


- EXISTING DRAINAGE**
- ⑩ US 5 1+182.6 LT ~ 1+238.6 LT
REMOVE EXISTING 375 mm RCP & DI
 - ⑪ US 5 1+238.8 LT ~ 1+239.4 RT
RETAIN EXISTING 300 mm RCP & DI
 - ⑫ US 5 1+239.6 RT ~ 1+240.0 RT
RETAIN EXISTING 300 mm RCP & DI
 - ⑬ US 5 1+239.2 LT
RETAIN EXISTING 375 mm RCP & DI

- NEW DRAINAGE**
- ⑤ US 5 1+167.5 LT ~ 1+238.7 LT
NEW 450 mm X 71m RCP CL III OR CPEP (SL)
NEW 1.2 X 1.2 RCDI @ INLET

- UNDERDRAIN**
- △ 4 US 5 1+167.5 LT ~ 1+215.0 LT
NEW 150 mm X 47 m UNDERDRAIN
W/ F.B. @ 1+215.0 LT
 - △ 5 VT 9 2+179.1 LT ~ US 5 1+215.0 RT
NEW 150 mm X 90 m UNDERDRAIN

LAYOUT--EXISTING & NEW DRAINAGE



PROJECT: BRATTLEBORO	PROJECT NO.: NH_2000(18)
DESIGN FILE NAME: /sqdc/93d191/dd191bdr.dgn	PLOT DATE: 8-APR-1999
IPARM FILE NAME: dd191d13.i	SURVEY DATE:
SURVEYED BY:	DRAWN BY: SQUAD_C
SQUAD LEADER: MENARD	SHEET: 30 OF 67