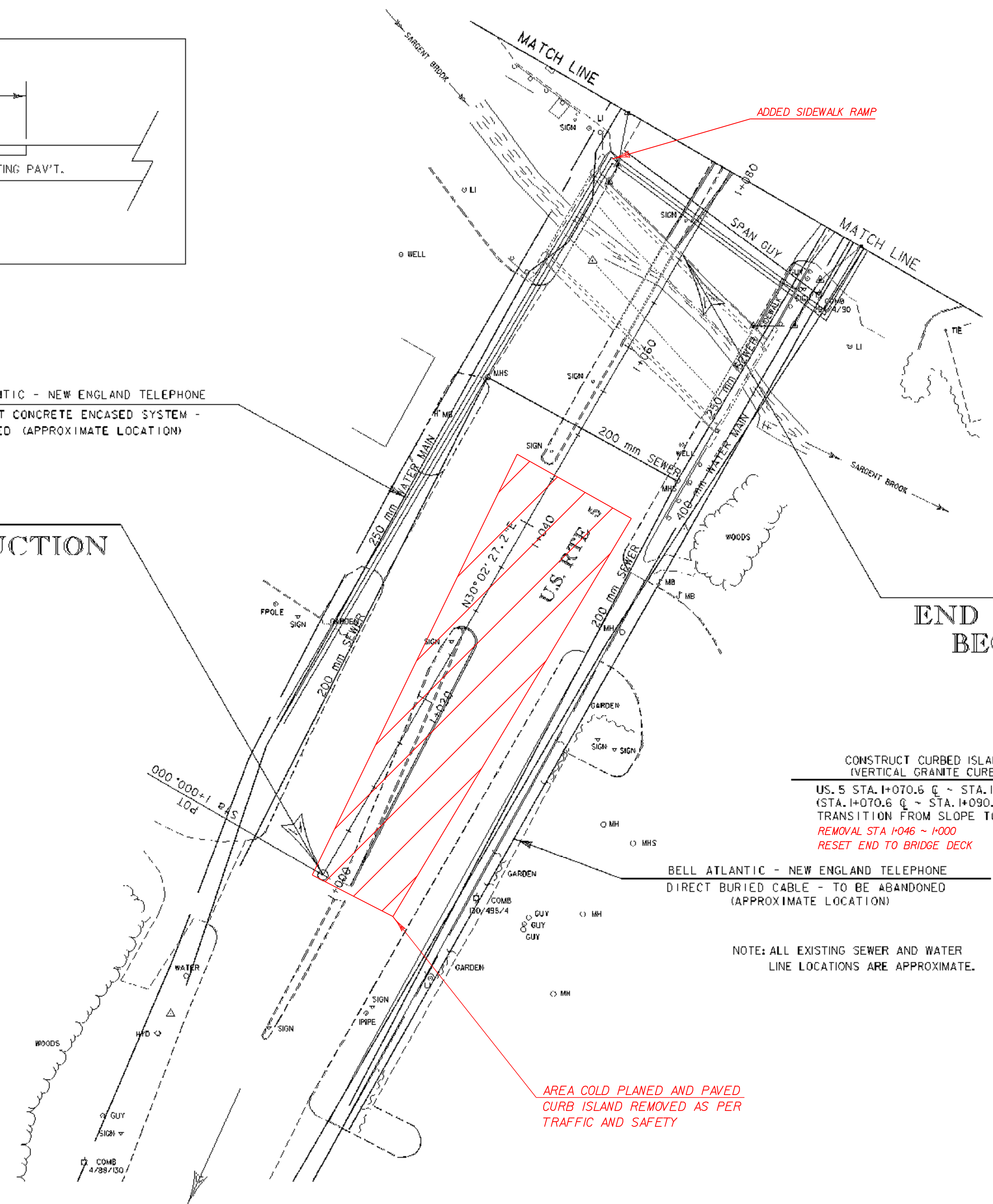


STATION 1+000.00  
BEGIN APPROACH CONSTRUCTION

STATION 1+070.620  
END APPROACH CONSTRUCTION  
BEGIN PROJECT NH 2000(18)



BELL ATLANTIC - NEW ENGLAND TELEPHONE  
THREE DUCT CONCRETE ENCASED SYSTEM -  
ABANDONED (APPROXIMATE LOCATION)

CONSTRUCT CURBED ISLAND  
(VERTICAL GRANITE CURB)  
U.S. 5 STA. 1+070.6 @ ~ STA. 1+080.0 @  
(STA. 1+070.6 @ ~ STA. 1+090.0 @  
TRANSITION FROM SLOPE TO VERTICAL)  
REMOVAL STA 1+046 ~ 1+000  
RESET END TO BRIDGE DECK

BELL ATLANTIC - NEW ENGLAND TELEPHONE  
DIRECT BURIED CABLE - TO BE ABANDONED  
(APPROXIMATE LOCATION)

NOTE: ALL EXISTING SEWER AND WATER  
LINE LOCATIONS ARE APPROXIMATE.

AREA COLD PLANED AND PAVED  
CURB ISLAND REMOVED AS PER  
TRAFFIC AND SAFETY

- CONSTRUCT SIDEWALK RAMP  
1+073.0 RT TYPE 1
- REMOVING & RESETTING CURB  
U.S. 5 1+000.0 @ ~ 1+028.2 @  
MATCH EXISTING @ 1+000.0 RT  
OFFSET 1.8 m RT @ 1+028.2 RT
- VERTICAL GRANITE CURB  
U.S. 5 STA. 1+067.9 RT ~ STA. 1+075.4 RT
- 200mm PORTLAND CEMENT CONC. SIDEWALK  
U.S. 5 STA. 1+075.4 RT ~ STA. 1+080.0 RT

SOUTH TO  
GUILFORD



ROADWAY LAYOUT



PROJECT:	<b>BRATTLEBORO</b>	PROJECT NO.:	<b>NH 2000(18)</b>
DESIGN FILE NAME:	/squad/93d191/dd191bdr.dgn		
IPARM FILE NAME:	dd191l1	PLOT DATE:	8-APR-1999
SURVEYED BY:	R. GILMAN	SURVEY DATE:	10-95
SQUAD LEADER:	S. MENARD	DRAWN BY:	K. UPMAL
		SHEET:	21 OF 67