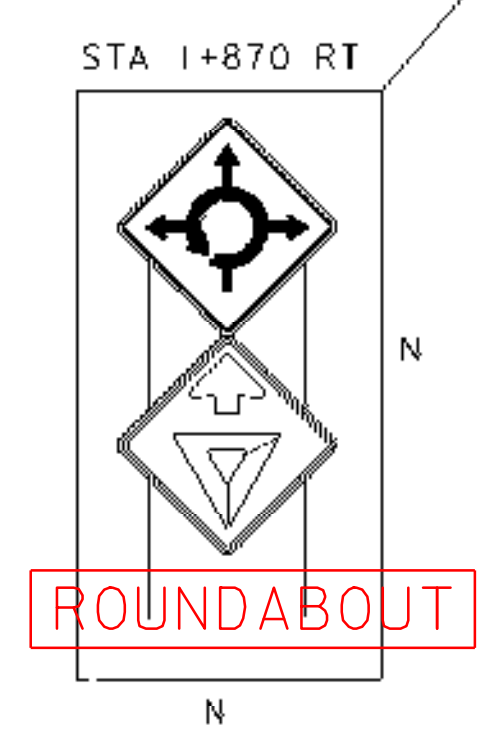


TO SOUTHBOUND INTERSTATE 91
FROM INTERSTATE 91 SOUTHBOUND

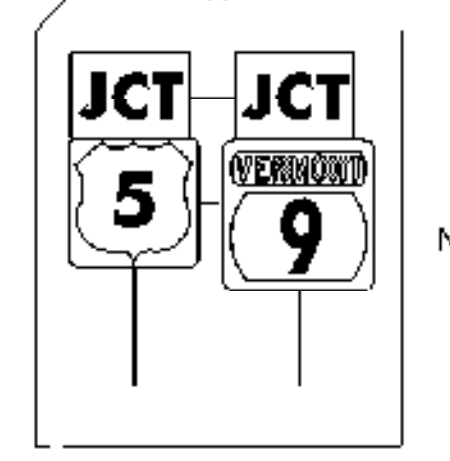
10 INTERSTATE 91 NORTHBOUND

REDUCED SPEED AHEAD
STA. 1+893 RT

SPEED LIMIT 25 M.P.H.
STA. 1+970 RT

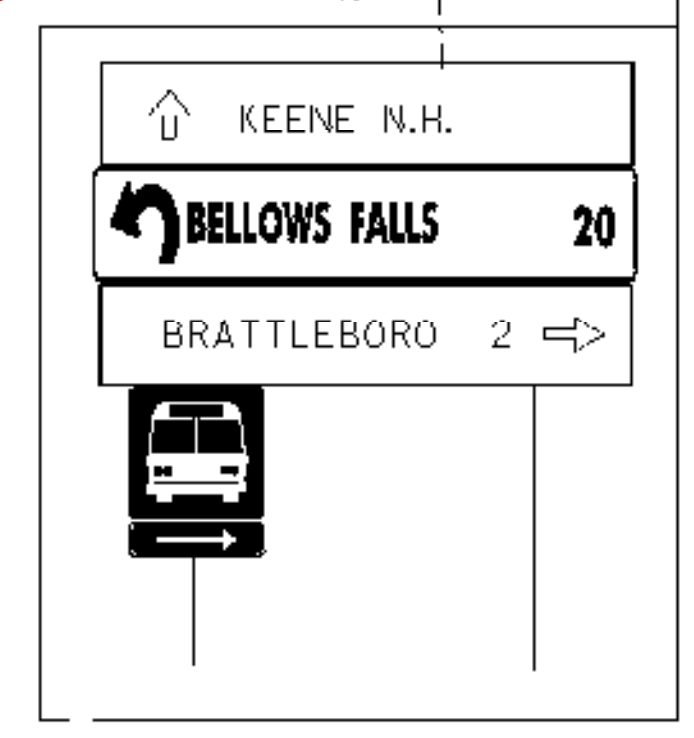


ROUNDABOUT



STA 1+930 RT

REDUCED SPEED AHEAD
STA. 1+980 RT



STA 1+990 RT

SPEED LIMIT 25 M.P.H.
STA. 1+995 RT

LINES SHOWN ON THIS PLAN AS EXISTING PROBABLY LINES P/L ARE BELIEVED TO BE ACCURATE BUT SHOULD NOT BE RELIED UPON FOR PURPOSES UNRELATED TO THE STATE OF VERMONT'S ACQUISITION OF LAND AND RIGHTS FOR THIS PROJECT.

CONSTRUCT DRIVE
2+063.2 LT
(REMOVE EXISTING ISLAND PAID UNDER ITEM 203.15)

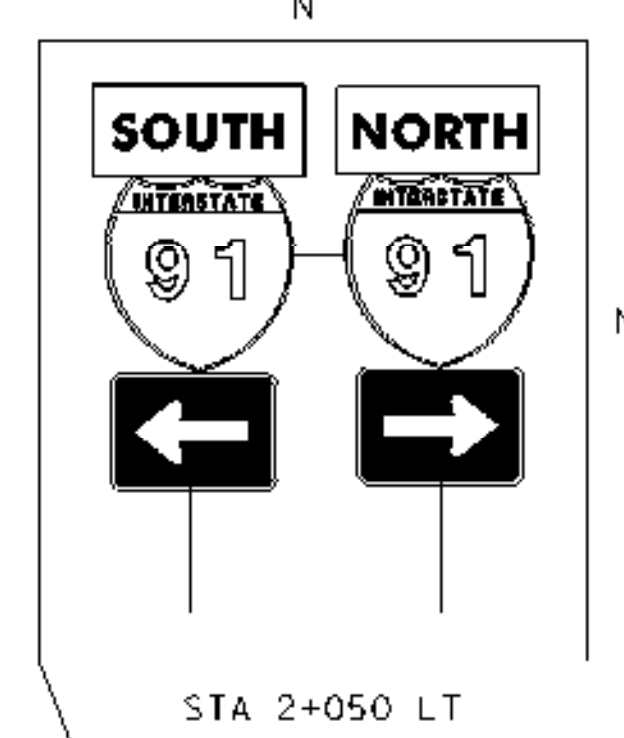
VERTICAL GRANITE CURB
BRAT. ST. HWY. STA. 2+048.0 RT ~ STA. 2+068.4 RT
BRAT. ST. HWY. STA. 2+069.6 LT ~ STA. 2+070.0 LT

GRANITE SLOPE EDGING
BRAT. ST. HWY. STA. 1+980.0 C ~ STA. 2+020.0 C
BRAT. ST. HWY. STA 2+020 STOP SLOPE EDGING, BEGIN TRANSITION TO VERTICAL GRANITE CURB
BRAT. ST. HWY. STA 2+050 END TRANSITION, BEGIN VERTICAL GRANITE CURB.

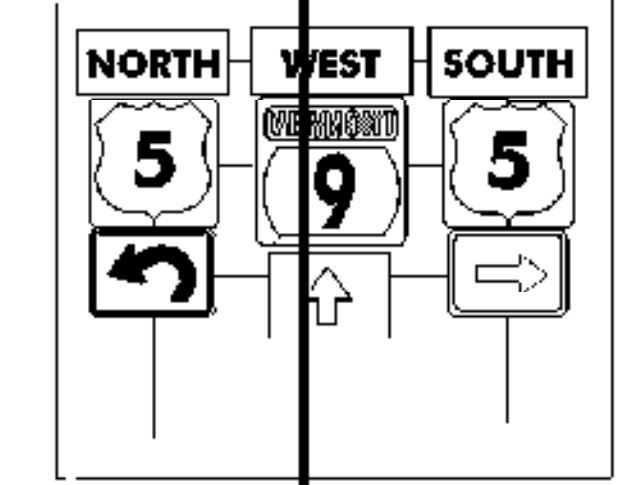
CONSTRUCT SIDEWALK RAMP, TYPE 1
2+066 RT

COLD PLANING
2+032.00 C.L. ~ 2+048.00 C.L.

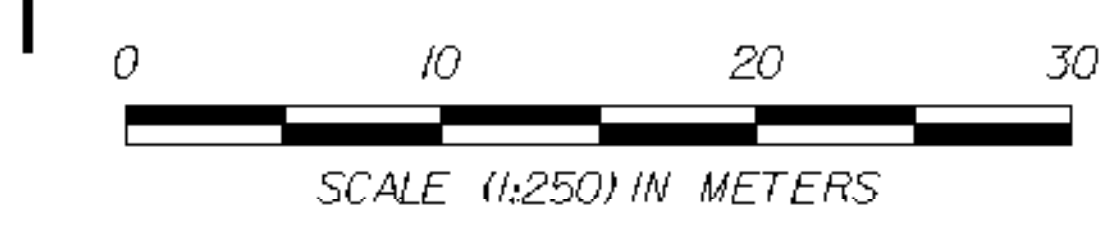
CONSTRUCT CURBED ISLAND
BRAT. ST. HWY. STA. 2+050.0 C ~ STA. 2+070.0 C



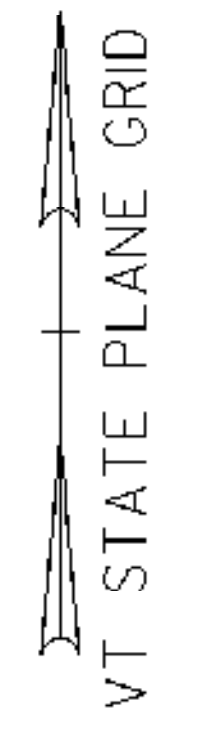
STA 2+050 LT



STA 2+055 RT



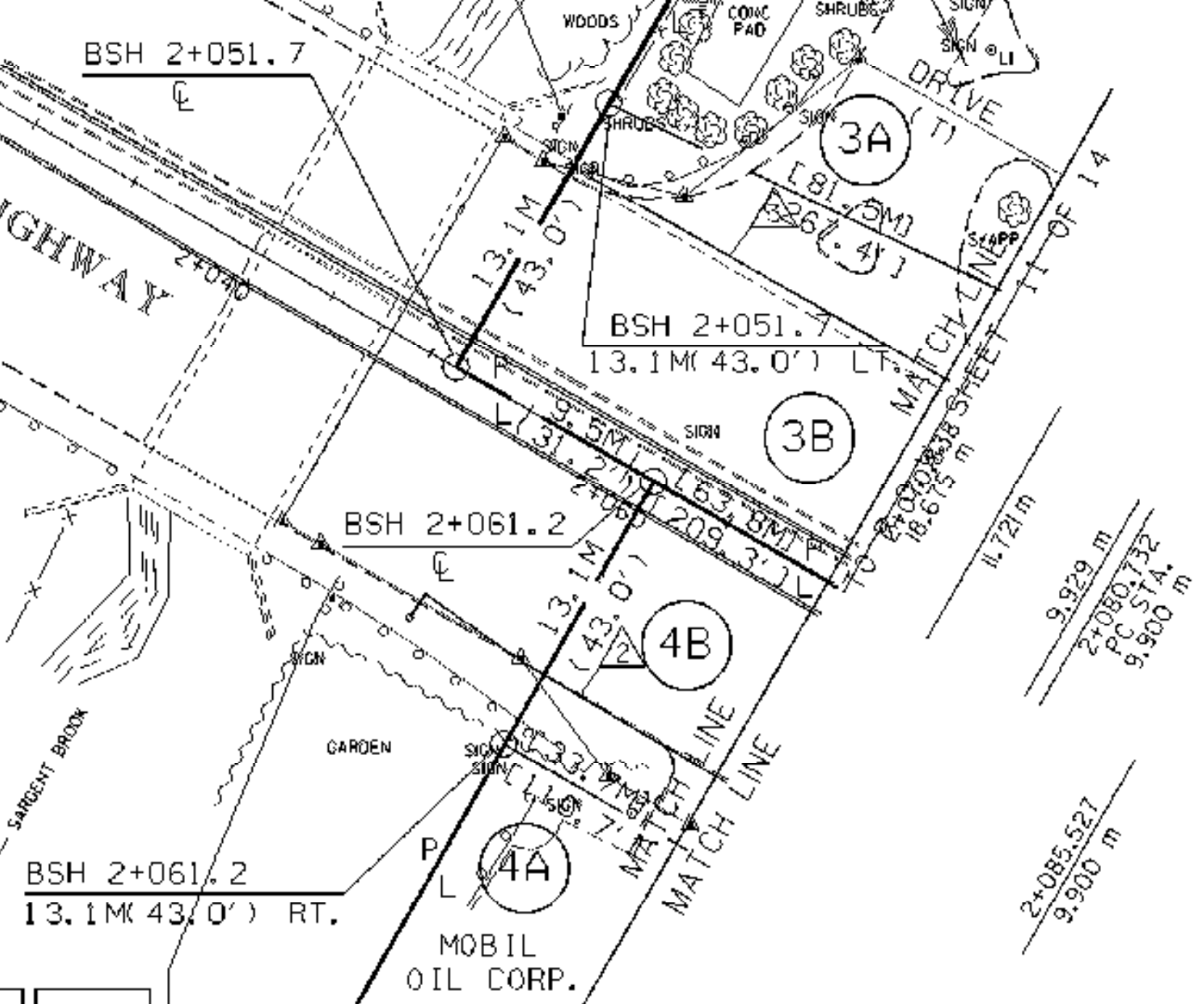
SCALE (1:250) IN METERS



BRATTLEBORO STATE HIGHWAY

THE JACK TARMY REVOCABLE TP LESSOR
VT. PIZZA HUTS INC. LESSEE

REMOVE & RESET (T)



LAYOUT -- EXISTING & NEW DRAINAGE FOR R.O.W. USE ONLY



PROJECT: BRATTLEBORO	PROJECT NO.: NH 2000(18)
DESIGN FILE NAME: /prop/93d191/rd191zzz.dgn	PLOT DATE: 8-APR-1999
IPARM FILE NAME: rd191r14.i	SURVEY DATE: 10-95
SURVEYED BY: R. GILMAN	DRAWN BY: K. UPMAL
SQUAD LEADER: S. MENARD	R. O. W. SHEET 12 OF 14
	SHEET 17 OF 67