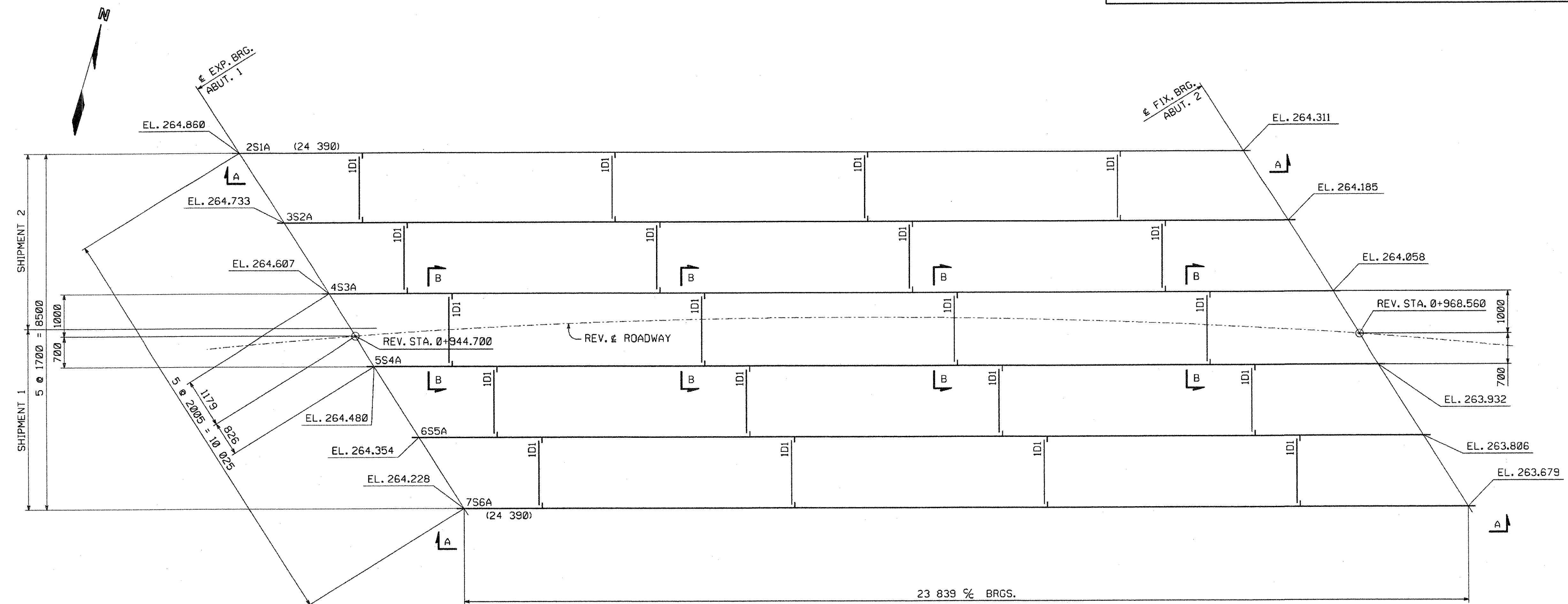


METRIC 1. ALL DIMENSIONS ARE IN MILLIMETERS UNLESS OTHERWISE NOTED.
2. ALL WEIGHTS ARE IN KILOGRAMS.

FED. ROAD DIV. NO.	STATE	FED. AID PROJ. NO.
	VT	

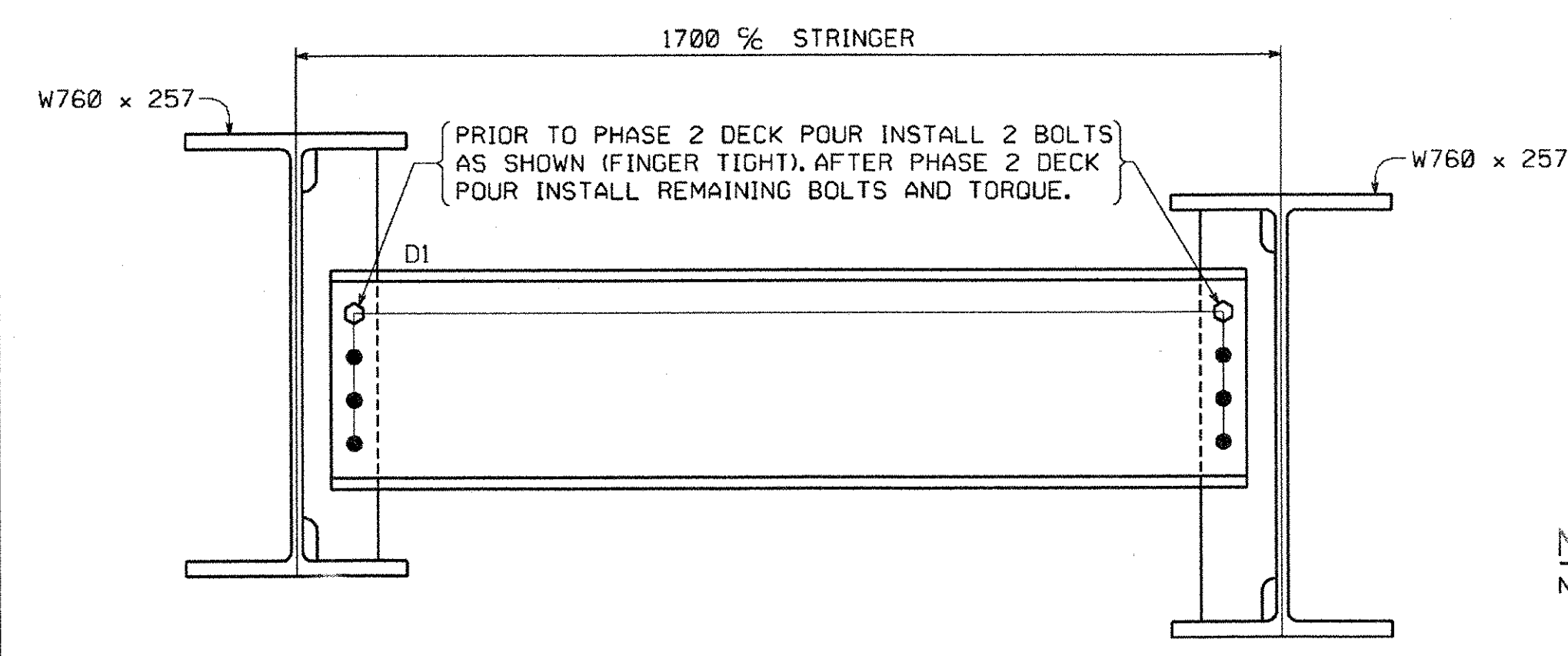


FIELD BOLT SUMMARY - SHIP. #1

(2% ADDITIONAL BOLTS ADDED + 3 EA. FOR TESTING)

AASHTO M164 TYPE 3 (RCT); WHVY HEX HD & AASHTO M291 GRADE DH3 HEX NUT
69 - 7/8" HIGH STRENGTH BOLTS x 0'-2 1/4
AASHTO M293 WEATHERING (RCT); ROUND & FLAT
69 - STD WASHERS FOR 7/8" BOLT
FIELD BOLT SUMMARY - SHIP. #2
(2% ADDITIONAL BOLTS ADDED + 3 EA. FOR TESTING)
AASHTO M164 TYPE 3 (RCT); WHVY HEX HD & AASHTO M291 GRADE DH3 HEX NUT
101 - 7/8" HIGH STRENGTH BOLTS x 0'-2 1/4
AASHTO M293 WEATHERING (RCT); ROUND & FLAT
101 - STD WASHERS FOR 7/8" BOLT

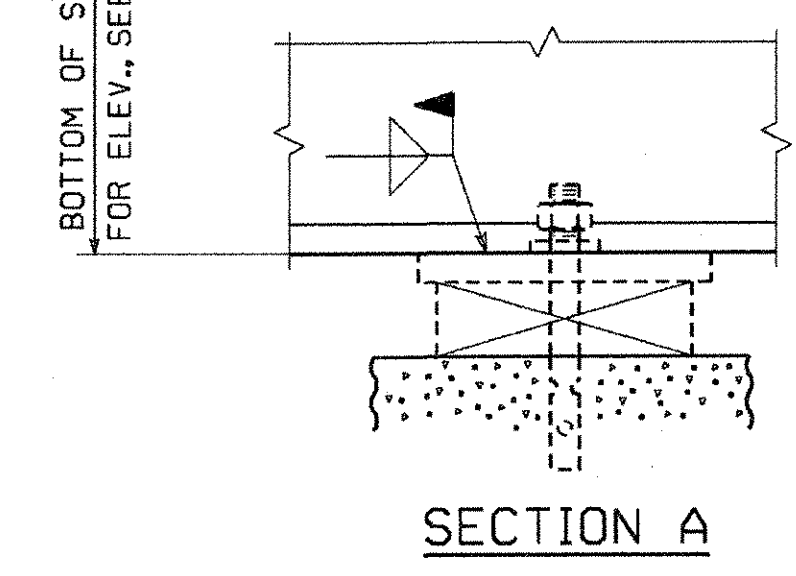
ERECTION FRAMING PLAN



SHIPPING WEIGHTS

SHIPPING PIECE MARK	WEIGHT EA (KG)
S1A	6,314
S2A	6,360
S3A	6,360
S4A	6,360
S5A	6,360
S6A	6,314

CONTRACTOR NOTE:
ELEVATIONS ARE GIVEN TO BOTTOM OF STEEL - DO NOT POUR TO FINAL ELEVATIONS WITHOUT VERIFICATION OF BEARING HEIGHTS AND BRIDGE SEATS.



NOTES:

NO CREDIT WILL BE ALLOWED FOR WORK PERFORMED BY OTHERS IN REPLACING OR CORRECTING MATERIALS OR WORKMANSHIP COVERED BY THIS DRAWING UNLESS EXPRESSLY AUTHORIZED BY HIGH STEEL STRUCTURES, INC. HIGH STEEL STRUCTURES, INC. DOES NOT SUPPLY SHEAR STUDS, EXPANSION DAM MATERIAL, BEARING ASSEMBLIES INCLUDING PADS AND ANCHOR BOLTS, HOLES OR BOLTS FOR FLEMING BRACKETS WORK THIS DRAWING WITH DRAWING E2.
NOTICE: WEIGHTS OF MEMBERS LISTED ON THESE DRAWINGS ARE ESTIMATED WEIGHTS AND ACTUAL WEIGHTS WILL VARY. HIGH STEEL STRUCTURES, INC. WILL NOT BE RESPONSIBLE FOR ANY ERECTION PROCEDURES, SHIPPING PROCEDURES, ETC. DEVELOPED USING ESTIMATED WEIGHTS AS SHOWN. ALL DIMENSIONS ARE GIVEN HORIZONTALLY (U.N.). ALL ELEVATIONS AND STATIONS ARE GIVEN IN METERS. DIMENSIONS GIVEN THUS: (24 390) ARE THE SHIPPING LENGTHS OUT TO OUT OF FASCIA STRINGERS. THE SHIPPING MARKS SHOWN CONSIST OF THE PREFIX INDICATING THE SHEET NUMBER UPON WHICH THE PIECE IS DETAILED ALONG WITH THE SHIPPING PIECE MARK. ALL FIELD CONNECTIONS TO BE MADE IN ACCORDANCE WITH THE FIELD BOLT SUMMARY AND LIST OF FIELD CONNECTIONS. (RCT) INDICATES ROTATIONAL CAPACITY TESTED BOLTS. DO NOT MIX NUTS, BOLTS AND WASHERS FROM DIFFERENT CONTAINERS UNLESS ALL NUTS, BOLTS AND WASHERS HAVE THE SAME LOT NUMBER.

SECTION B-B

LIST OF FIELD CONNECTIONS ~ SHIP. 1

LINE	ACTUAL NUMBER REQ'D	BOLT DIAM.	BOLT LENGTH	BOLTS PER CONN.	NO. OF CONN.	GRIP	THICKNESS OF PIECES JOINED	PIECES CONNECTED AND REMARKS
1	64	7/8	2 1/4	4	16	25.9	10.0 15.9	DIAPHRAGM TO CONN. PLATE
2								

LIST OF FIELD CONNECTIONS ~ SHIP. 2

LINE	ACTUAL NUMBER REQ'D	BOLT DIAM.	BOLT LENGTH	BOLTS PER CONN.	NO. OF CONN.	GRIP	THICKNESS OF PIECES JOINED	PIECES CONNECTED AND REMARKS
1	96	7/8	2 1/4	4	24	25.9	10.0 15.9	DIAPHRAGM TO CONN. PLATE
2								

SHOP DRAWING REVIEW

REVIEWED AS REQUIRED BY THE CONSTRUCTION CONTRACT DOCUMENTS AND APPROVED, BUT ONLY FOR CONFORMANCE TO THE DESIGN CONCEPT OF THE WORK, AND SUBJECT TO FURTHER LIMITATIONS AND REQUIREMENTS CONTAINED IN THE CONSTRUCTION CONTRACT DOCUMENTS.

REJECTED REVISE AND RESUBMIT FURNISH AS CORRECTED

CORRECTIONS OR COMMENTS MADE ON THE SHOP DRAWINGS DURING THIS REVIEW DO NOT RELIEVE CONTRACTOR FROM COMPLIANCE WITH REQUIREMENTS OF THE DRAWINGS AND SPECIFICATIONS. THIS CHECK IS ONLY FOR REVIEW OF GENERAL CONFORMANCE WITH THE DESIGN CONCEPT OF THE PROJECT AND GENERAL COMPLIANCE WITH THE INFORMATION GIVEN IN THE CONTRACT DOCUMENTS. THE CONTRACTOR IS RESPONSIBLE FOR: CONFIRMING AND CORRELATING ALL QUANTITIES AND DIMENSIONS; SELECTING FABRICATION PROCESSES AND TECHNIQUES OF CONSTRUCTION; COORDINATING HIS WORK WITH THAT OF ALL OTHER TRADES; AND PERFORMING HIS WORK IN A SAFE AND SATISFACTORY MANNER.

VHB Vanasse Hangen Brustlin, Inc. Engineers, Planners, and Scientists 500 Bedford Farm, Kilton Rd. Bedford, NH 03110 603 944 0288

Job Number: 50543
Reviewed By: L.S. GARMER
Date: 9/6/06

RECEIVED
OK'D BY: *WJH* OK'D BY: _____
AUG 21 2006
RESUBMIT: _____ APPROVED: *As Not'd*
BY: *WJH* DATE: 9/16/06

NO.	REVISION	BY	DATE
 1770 Hempstead Road Lancaster, PA 17602-0008 Phone 717-299-5211 A Division of High Structures, Inc.			
ERECTION FRAMING PLAN VT 17 OVER MILL BROOK VT 17 STA. 0+944.700 TO STA. 0+968.560 TOWN OF FALSTON, WASHINGTON COUNTY, VT STATE OF VERMONT AGENCY OF TRANSPORTATION			
STATE CONTRACT OR REF. NO. BRIDGE NO. 36			
CONTRACTOR WINTERSET, INC.			
IN CHARGE: CHRISTMAN (IH) MADE BY: <i>ERS</i> CHK'D. BY: MCK DATE: 8-9-06			
CONTRACT NUMBER: VT-06062-1&2 DRAWING NUMBER: E1 OF E2			

FAYSTON

08453