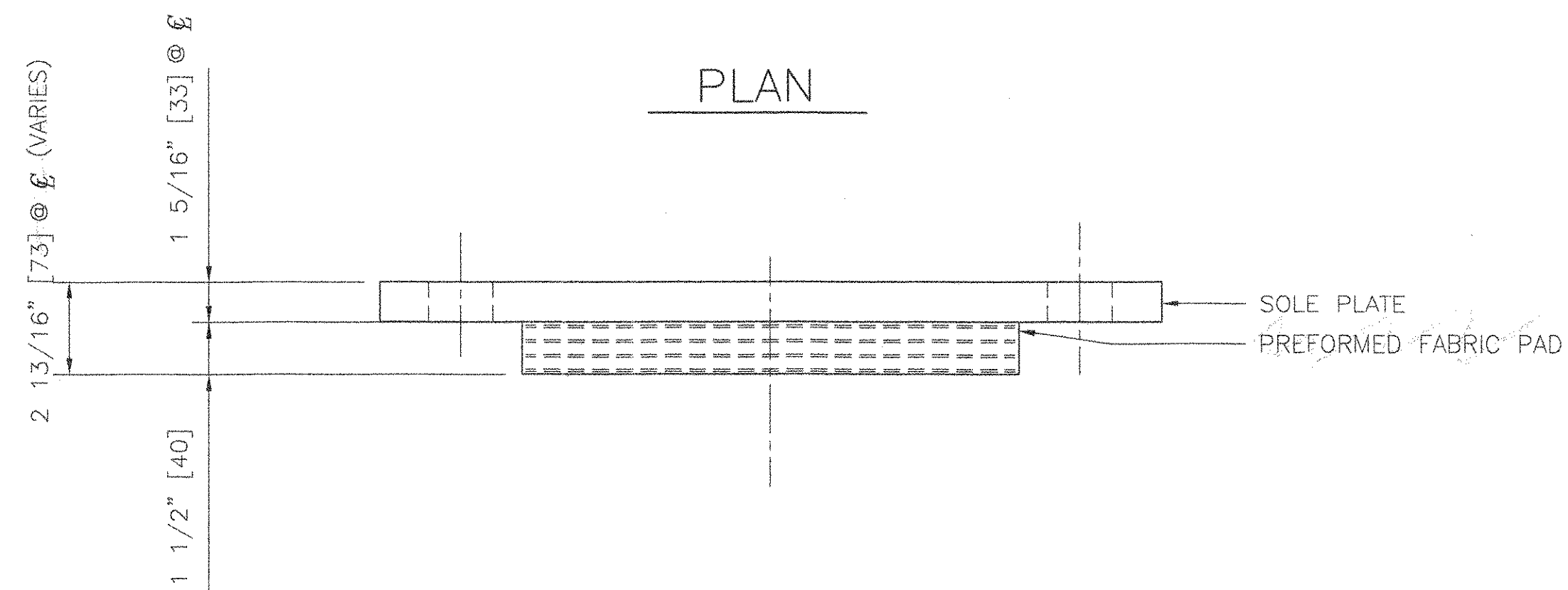


PLAN

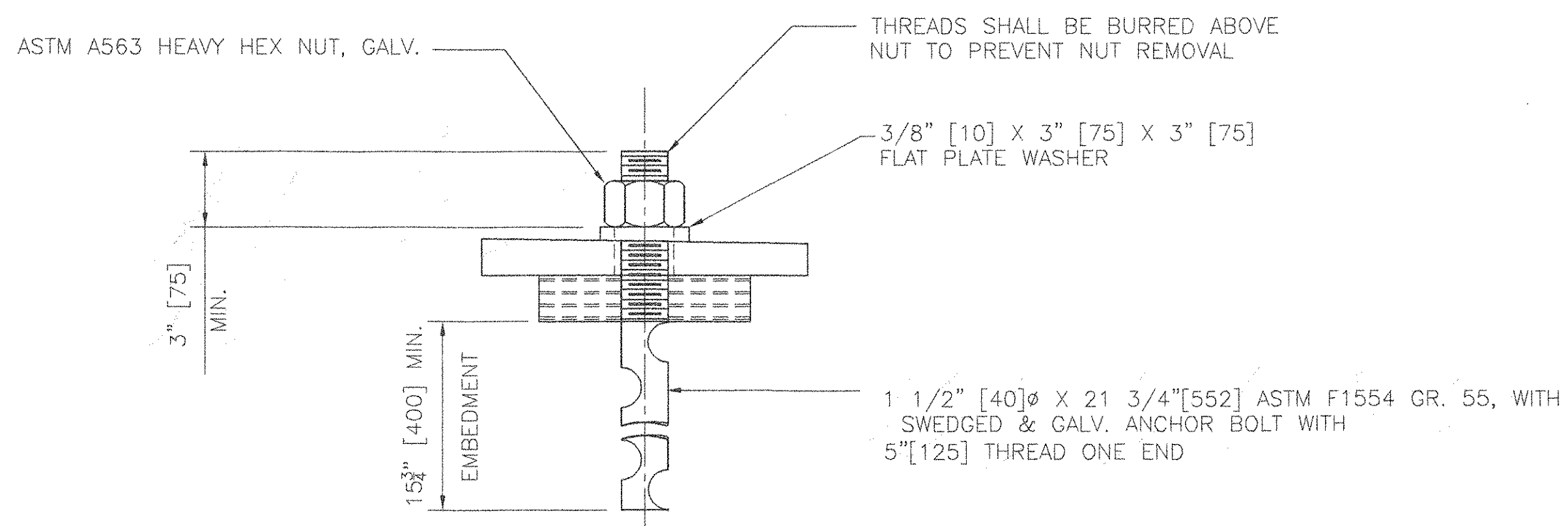
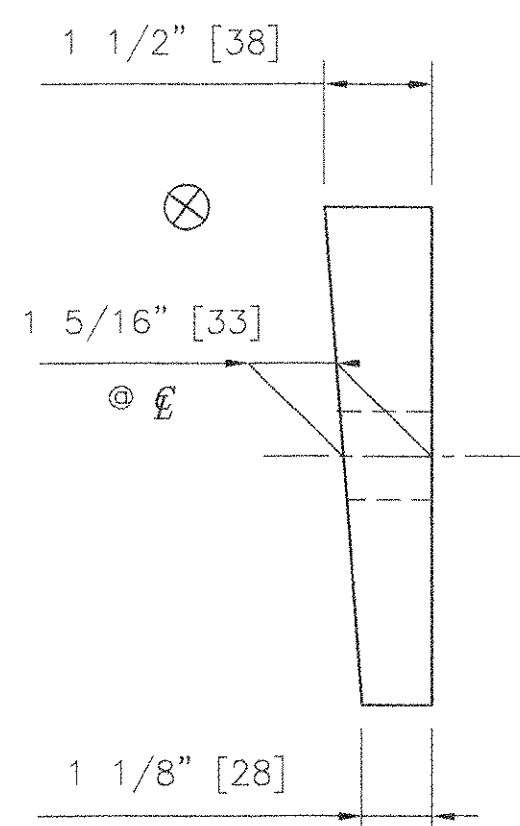


FRONT ELEVATION

COSMEC FIXED ELASTOMERIC BEARING

LOCATION:
ABUTMENT NO.2 BEAM 6
TOTAL QUANTITY - 1

STA. AHD. →



ANCHOR BOLT DETAIL
(SIDE VIEW)

BEARING NOTES:

- ANCHOR BOLTS AND ASSOCIATED HARDWARE SHALL BE GALVANIZED IN ACCORDANCE WITH ASTM A153 OR A123 AS APPLICABLE.
- LOCATION OF FABRICATION - 70 SOUTH STREET
WALPOLE, MA 02081
- COSMEC, INC. REPRESENTATIVE: MR. MATT McANDREWS
(508-668-6600)
- ⊗ MARKS THE THICK END OF SOLE PLATE.
- MAXIMUM ALLOWABLE BEARING PRESSURE ON CONCRETE= 6.9 MPa
MINIMUM ALLOWABLE DESIGN ROTATION= 0.015 RADIAN
HORIZONTAL CAPACITY SHALL BE A MINIMUM OF 6% VERTICAL LOAD
DESIGN LOAD PER BEARING: 476 kN [107 KIPS]
- ALL EDGES OF STEEL PLATES SHALL HAVE 1/16" MINIMUM RADIUS
- UNITS= INCHES [MM]

MATERIALS:

STEEL - AASHTO M-270 GR 36 ZINC METALIZED
 PREFORMED FABRIC PAD - AASHTO 18.4.9.1 DIV.II
 ANCHOR BOLTS - ASTM F1554 GR 55 GALVANIZED

ALL BEARING DEVICES SHALL BE ZINC METALIZED AS PER SUBSECTION 531.04(b) AND 506.15(b). BEARINGS SHALL BE SEALED WITH AN APPROVED SEALER AS SPECIFIED IN STANDARD SPEC. SUBSECTION 506.15(b). AREAS OF METALIZING DAMAGED BY FIELD WELDING OR HANDLING SHALL BE PAINTED WITH AN APPROVED SEALANT.

STATE OF VERMONT
 AGENCY OF TRANSPORTATION
 ROUTE NO. VT 17 (MAJOR COLLECTOR),
 BRIDGE NO. 36
 TOWN OF FAYSTON
 WASHINGTON COUNTY
 PROJECT BHF-0200(9)

COSMEC, INC. 70 SOUTH STREET
 WALPOLE, MA 02081
 SCALE: 1/4"=1" DRAWN BY: MAE CHECKED BY: MRR
 DATE: 8/15/06 DATE: 8/22/06
COSMEC ELASTOMERIC BEARINGS

RECEIVED
 OK'D BY: *VHS* OK'D BY: _____
 NOV 16 2006
 RESUBMIT: _____ APPROVED: _____
 BY: *Wj* DATE: 11/16/06

REV. 1	REVISED AS NOTED PER REVIEWERS COMMENTS	BY: MAE	DATE: 11/06	OK'D BY: MCM	DATE: 11/06	CUSTOMER: WINTERSSET, INC.	S.O. NUMBER: 60642	DRAWING NUMBER: 4880	REV: 1
--------	---	---------	-------------	--------------	-------------	----------------------------	--------------------	----------------------	--------

074bb