

**REINFORCING STEEL SCHEDULE**

BAR	SIZE	DETAILS
CR1	3/8"	
CR2	5/8"	
CR3	3/4"	
CR4	1/2"	SEE TABLE

**DIMENSIONS**

SEW	W	X	Y	Z
68"	1'-2"	1'-10"	3'-4"	1'-0"
60"	1'-2"	7'-3"	3'-4"	8 1/2"
45"	2'-2"	9"	3'-1"	5"
30"	2'-6"	5"	2'-1 1/2"	3"
15"	2'-8 1/2"	2 1/2"	2'-10 1/2"	1 1/2"
SQRB	2'-9"	0	2'-9"	0

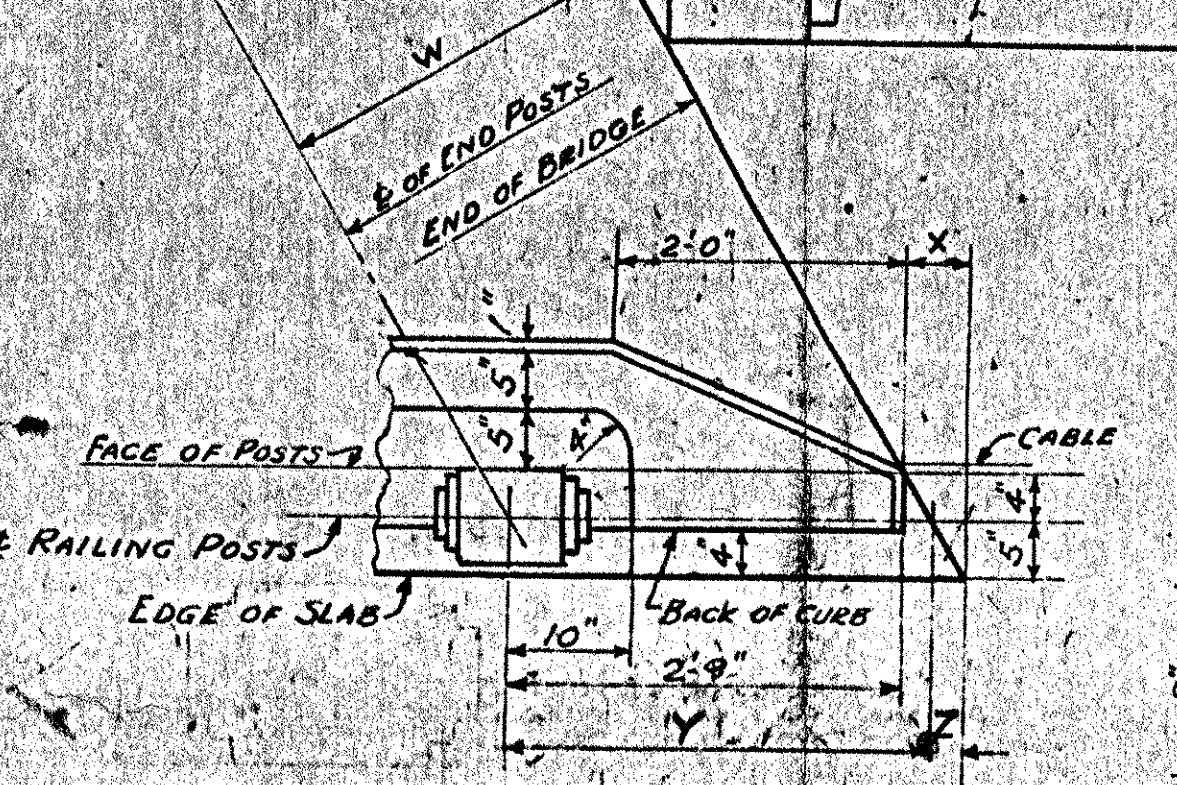
**REINFORCING BARS REQUIRED**

CLEAR SPAN	CR1 LGTH.	CR2 LGTH.	CR3 LGTH.	CR4 LGTH.
25'-0"	2'-6"	4'-7"	3'-0"	2'-6"
30'-0"	60	54	42	17'-0"
35'-0"	60	54	48	19'-6"
40'-0"	72	66	56	22'-0"
45'-0"	84	78	64	25'-3"
50'-0"	84	78	70	27'-9"
55'-0"	96	90	76	30'-0"
60'-0"	108	102	84	33'-9"
65'-0"	108	102	90	35'-0"
70'-0"	120	114	96	36'-0"
75'-0"	132	126	104	38'-0"
80'-0"	132	126	110	38'-6"

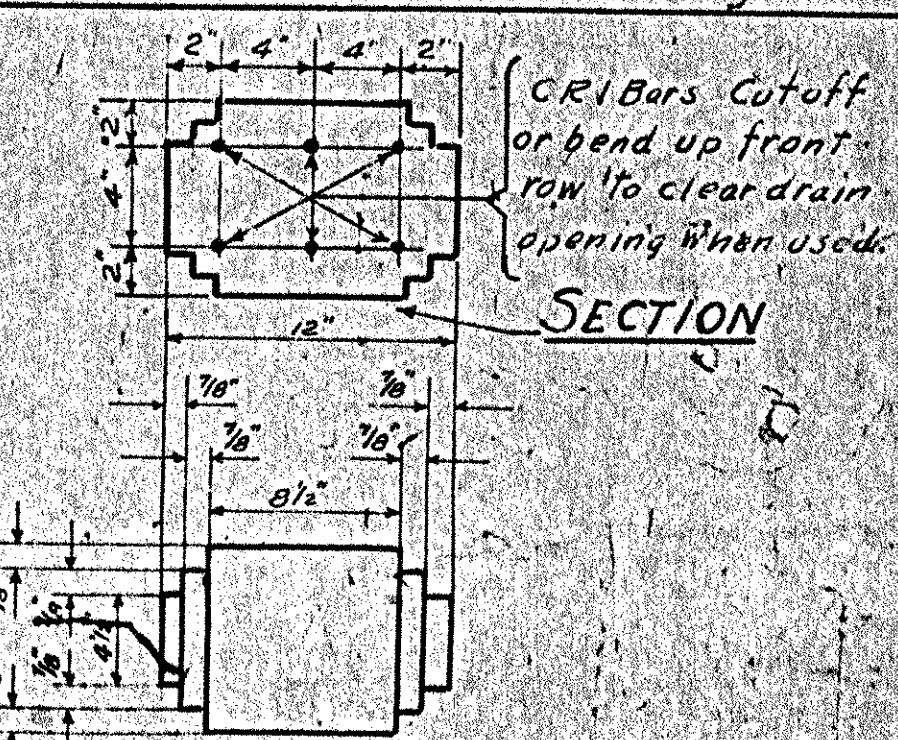
**POST SPACING & QUANTITIES 1-SQUARE SPAN**

CLEAR SPAN	NUMBER OF POSTS	POST SPA. CING. D.	CONCRETE CLAS. CUT-OFF	REIN. STEEL LB.
25'-0"	8	7'-6"	3.3	1065
30'-0"	10	6'-10 1/2"	3.9	1348
35'-0"	10	8'-1 1/2"	4.3	1483
40'-0"	12	7'-6"	5.0	1715
45'-0"	14	7'-3"	5.7	1982
50'-0"	16	8'-1"	6.1	2119
55'-0"	16	7'-2 1/2"	6.8	2331
60'-0"	18	7'-3 1/2"	7.5	2514
65'-0"	18	7'-1 1/2"	7.9	2820
70'-0"	20	7'-7 1/2"	8.6	3046
75'-0"	22	7'-4 1/2"	9.2	3253
80'-0"	22	7'-10 1/2"	9.7	3414

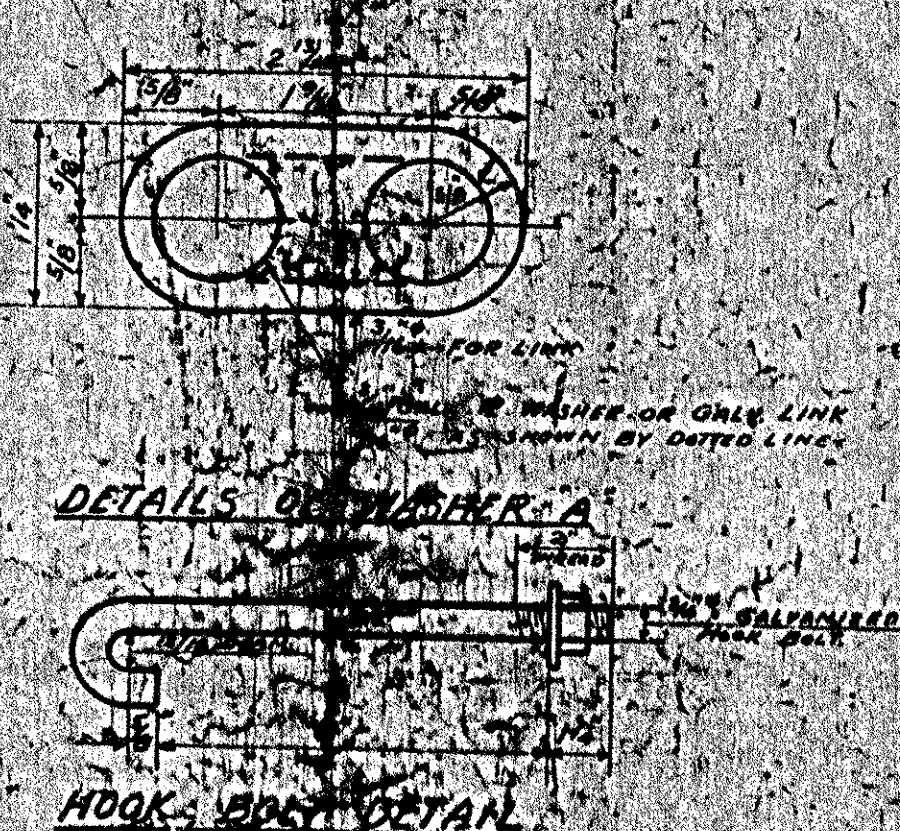
**NOTE:-**  
THIS DETAIL NOT TO BE FOLLOWED WHEN APPROACH SLAB WITH CURB IS USED. (SEE TYPICAL PLAN)



**PLAN OF CURB ENDS FOR VARIOUS SKEWS**  
SCALE 3/4"=1'-0"

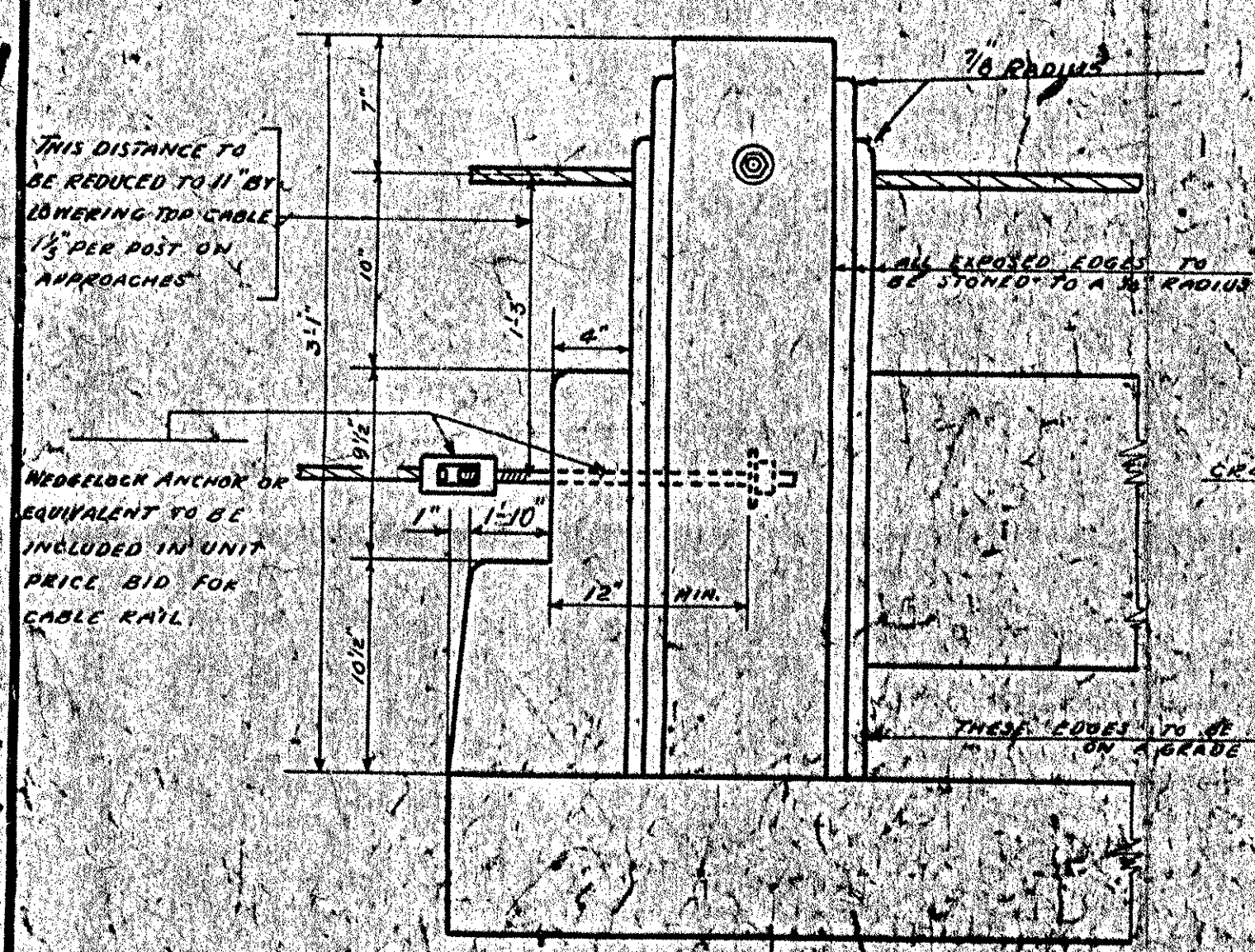


**SECTION**

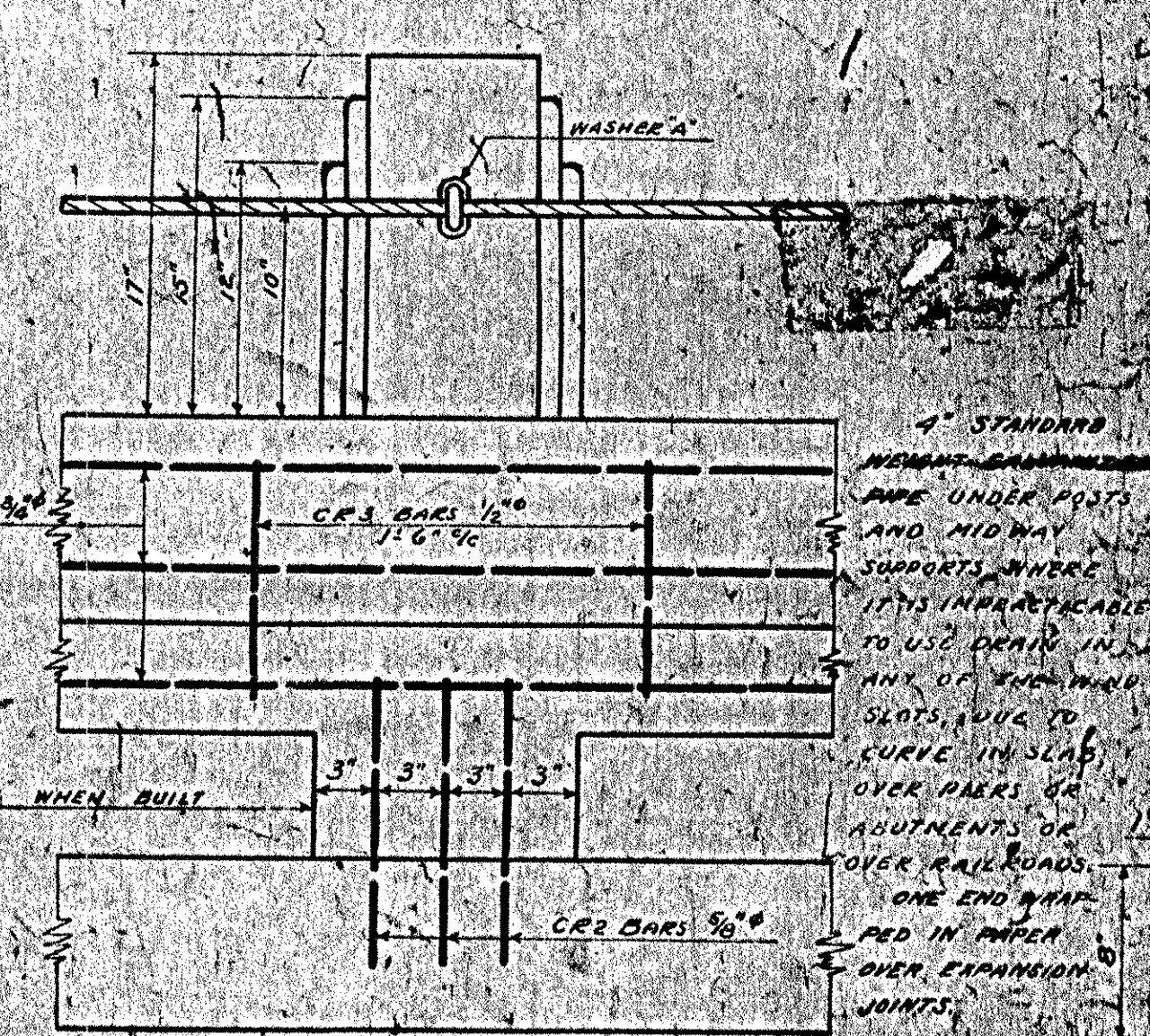


**DETAILS OF NUMBER 6**

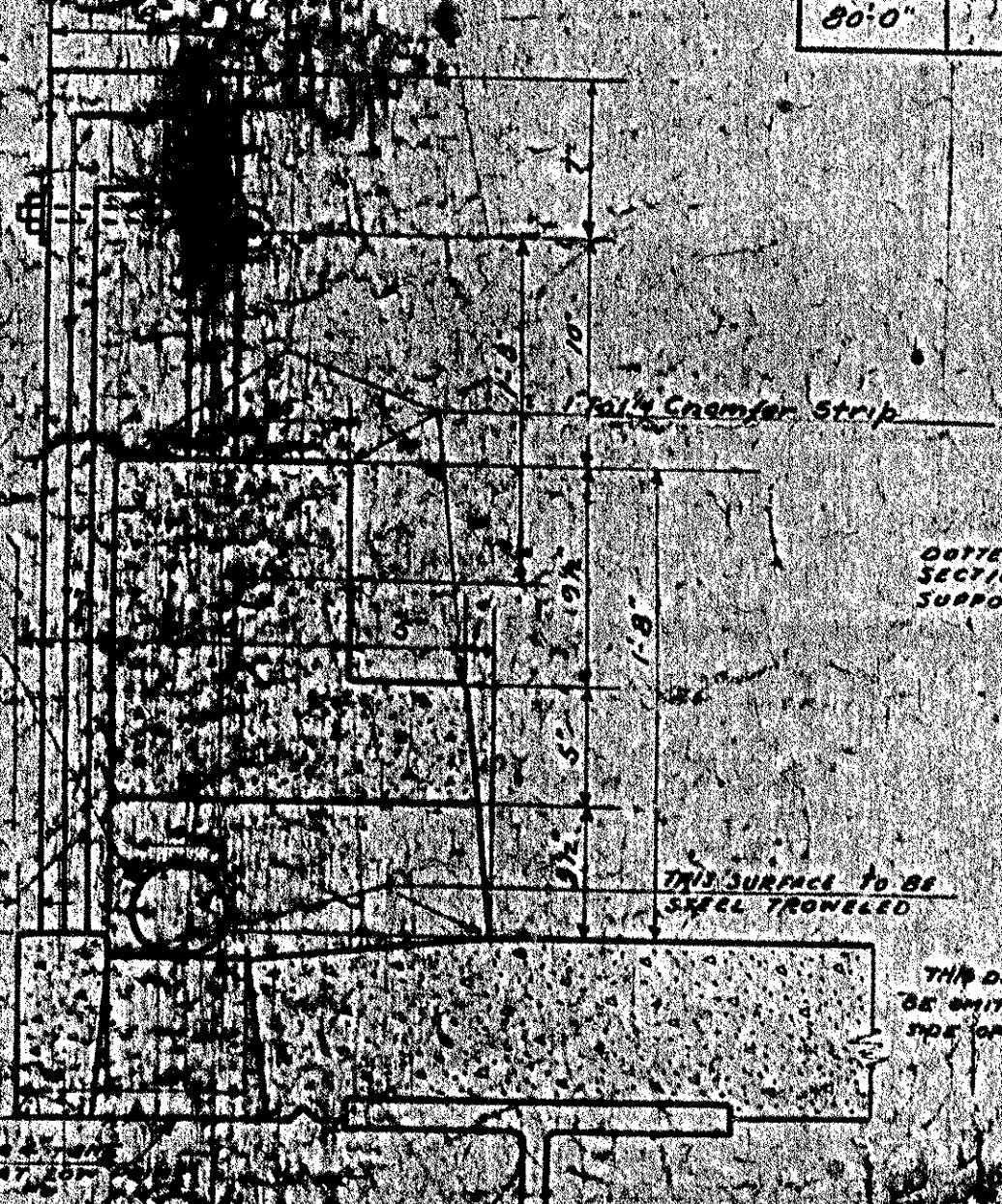
**HOOK-BACK DETAIL**



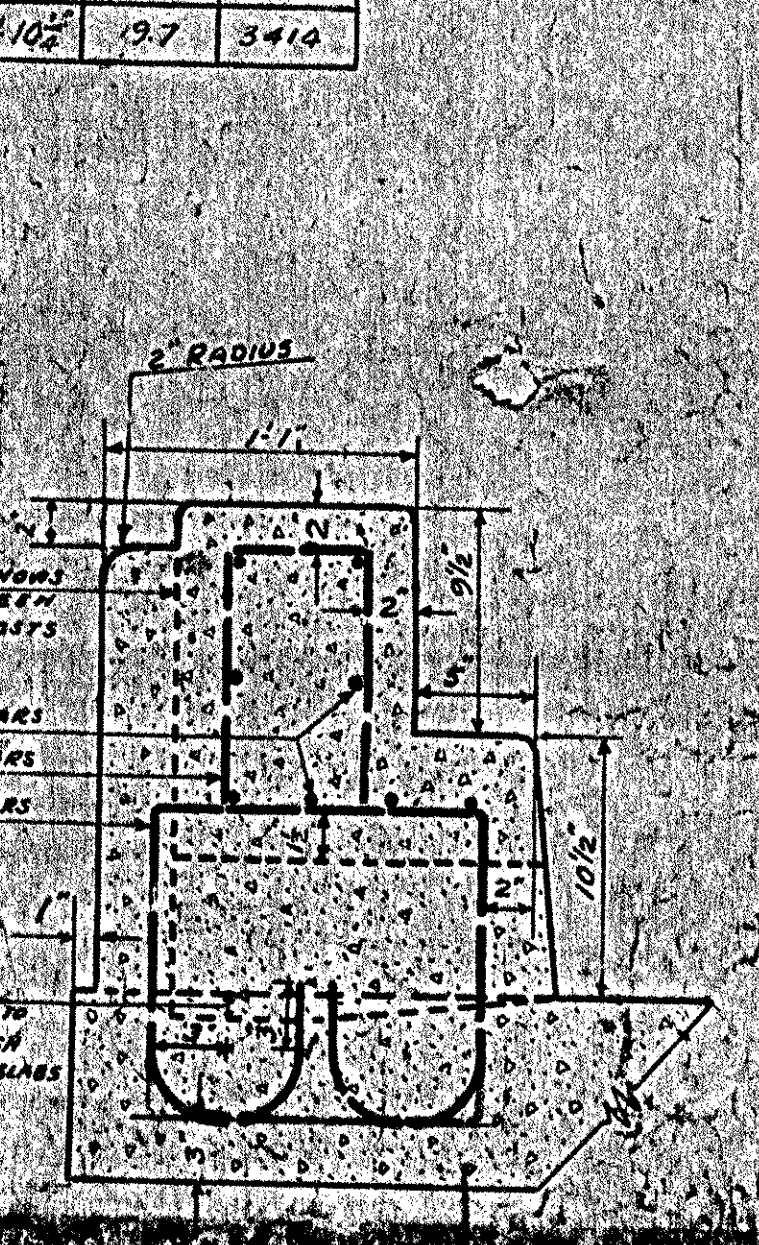
**ELEVATION - BACK OF POST @ SQUARE END**



**ELEVATION - FRONT OF POST**



**SIDE VIEW POST SECTION, CURB & DRAIN**



**SECTION AT MIDWAY SUPPORTS**

**GENERAL NOTES**

CAMBER - RAIL AND CURB SHALL BE CAMBERED THE SAME AS THE ROAD WHICH THEY ARE USED.

CHAMFER - ALL EXPOSED EDGES SHALL BE CHAMFERED & BEWELLED.

POSTS - POSTS AND ALL VERTICAL EDGES SHALL BE BUILT PLUMB WITHIN 1/4" FOLLOWING THE GRADE OF THE ROAD.

WORK & MATERIALS - ALL WORK AND MATERIALS SHALL CONFORM TO THE BRIDGE SPECIFICATIONS OF THE VERMONT STATE HIGHWAY DEPARTMENT.

PAYMENT - CONCRETE AND REINFORCING STEEL IN CURBS AND POSTS AT UNIT PRICE BID FOR THESE ITEMS.

CABLE - INCLUDING HARDWARE SHALL BE PAID FOR BY THE CONTRACTOR.

**MULTIPLE SPAN BRIDGES**

QUANTITIES - AS SHOWN ABOVE MAY BE USED FOR MULTIPLE SPAN BRIDGES. 'D' MUST BE FIGURED FOR EACH INDIVIDUAL CASE.

**STANDARD CABLE RAIL FOR BEAM BRIDGES**

BRIDGE RAIL - CURB END DETAIL