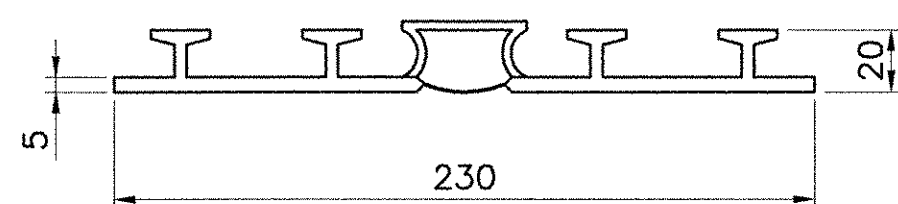
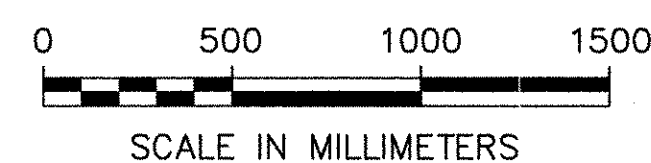


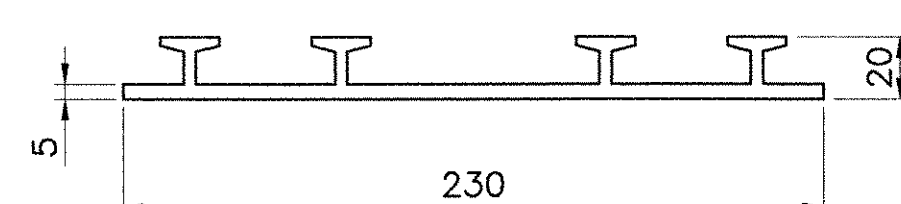
CURTAIN WALL DETAIL

(PERPENDICULAR TO CENTERLINE BEARING)
 (ABUTMENT NO. 1 SHOWN, ABUTMENT NO. 2 SIMILAR EXCEPT FOR WATERSTOP - SEE DETAILS BELOW)
 SCALE: 1:20



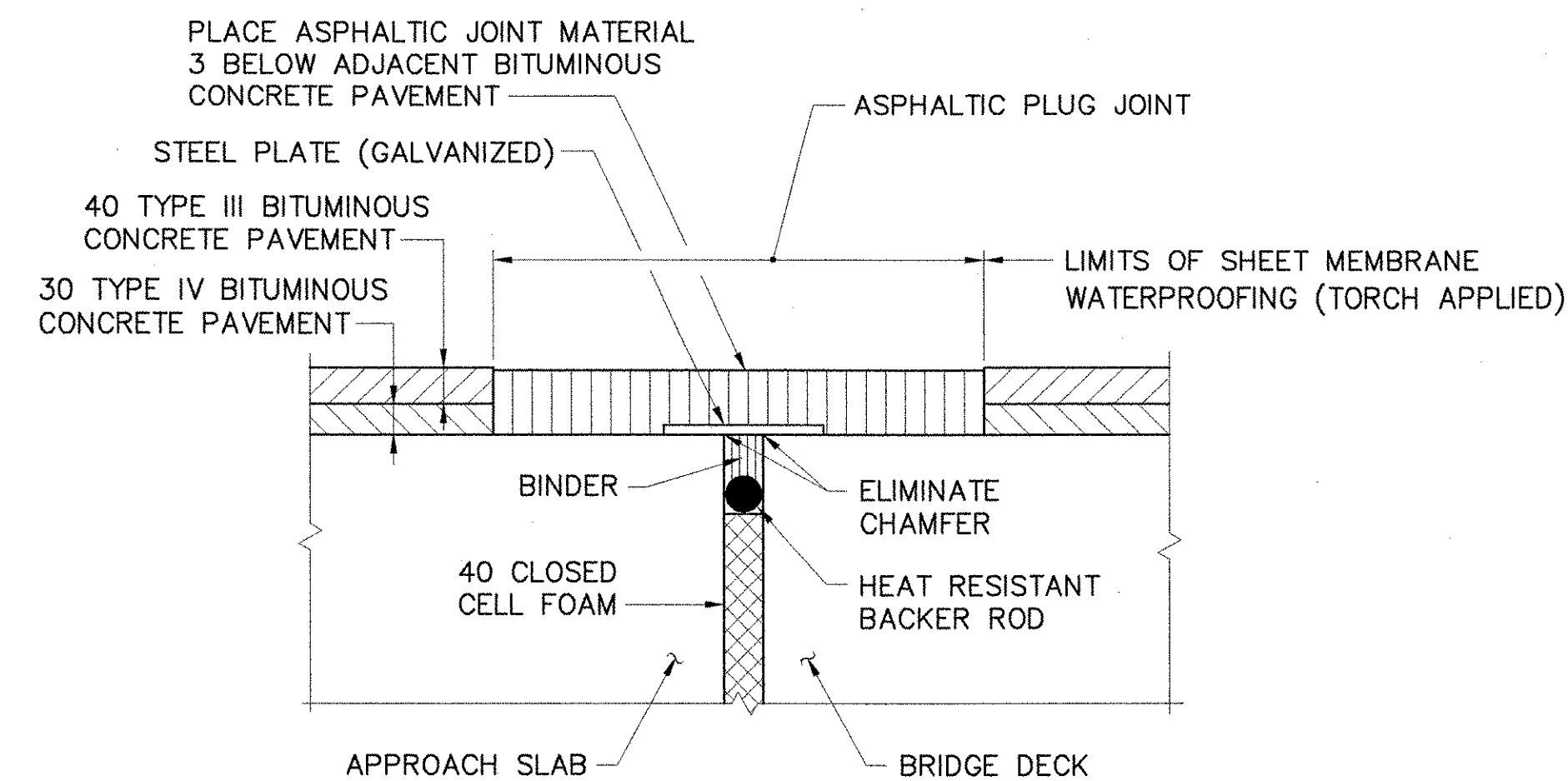
P.V.C. WATERSTOP FOR EXPANSION JOINTS

(ABUTMENT NO. 1) (EXPANSION)
 N.T.S.



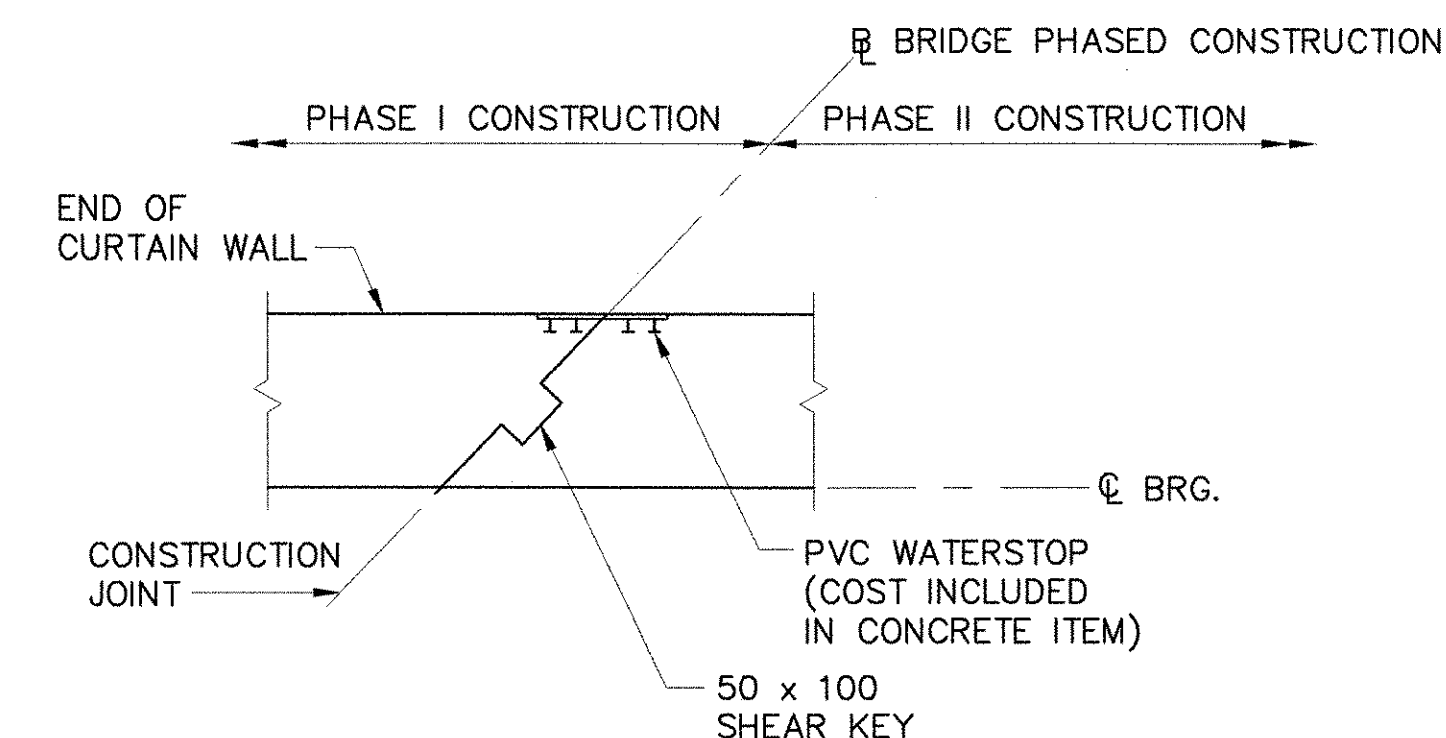
P.V.C. WATERSTOP

(ABUTMENT NO. 2) (FIXED)
 N.T.S.



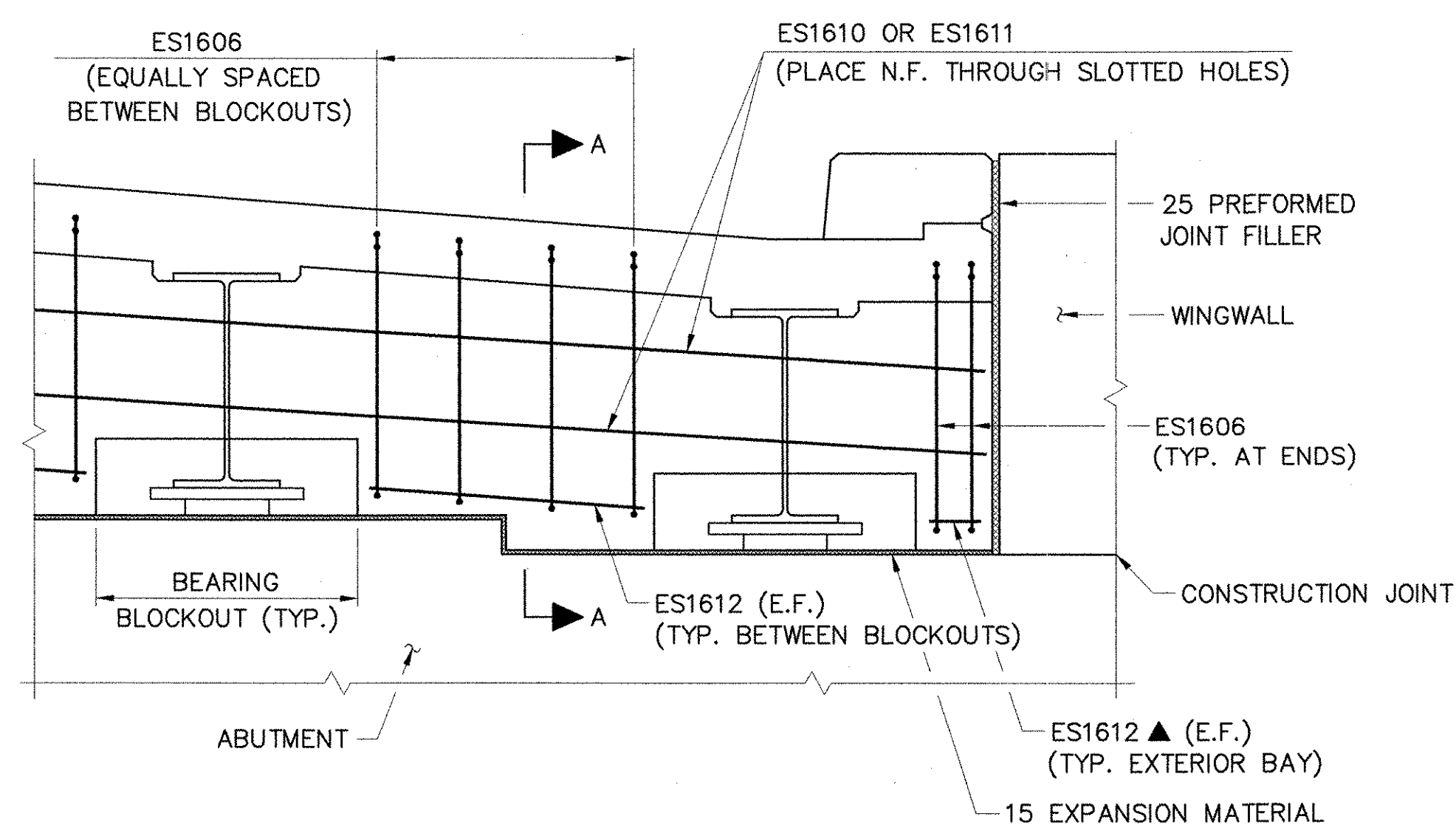
ASPHALTIC PLUG JOINT DETAIL

(TYPICAL EACH END)
 N.T.S.



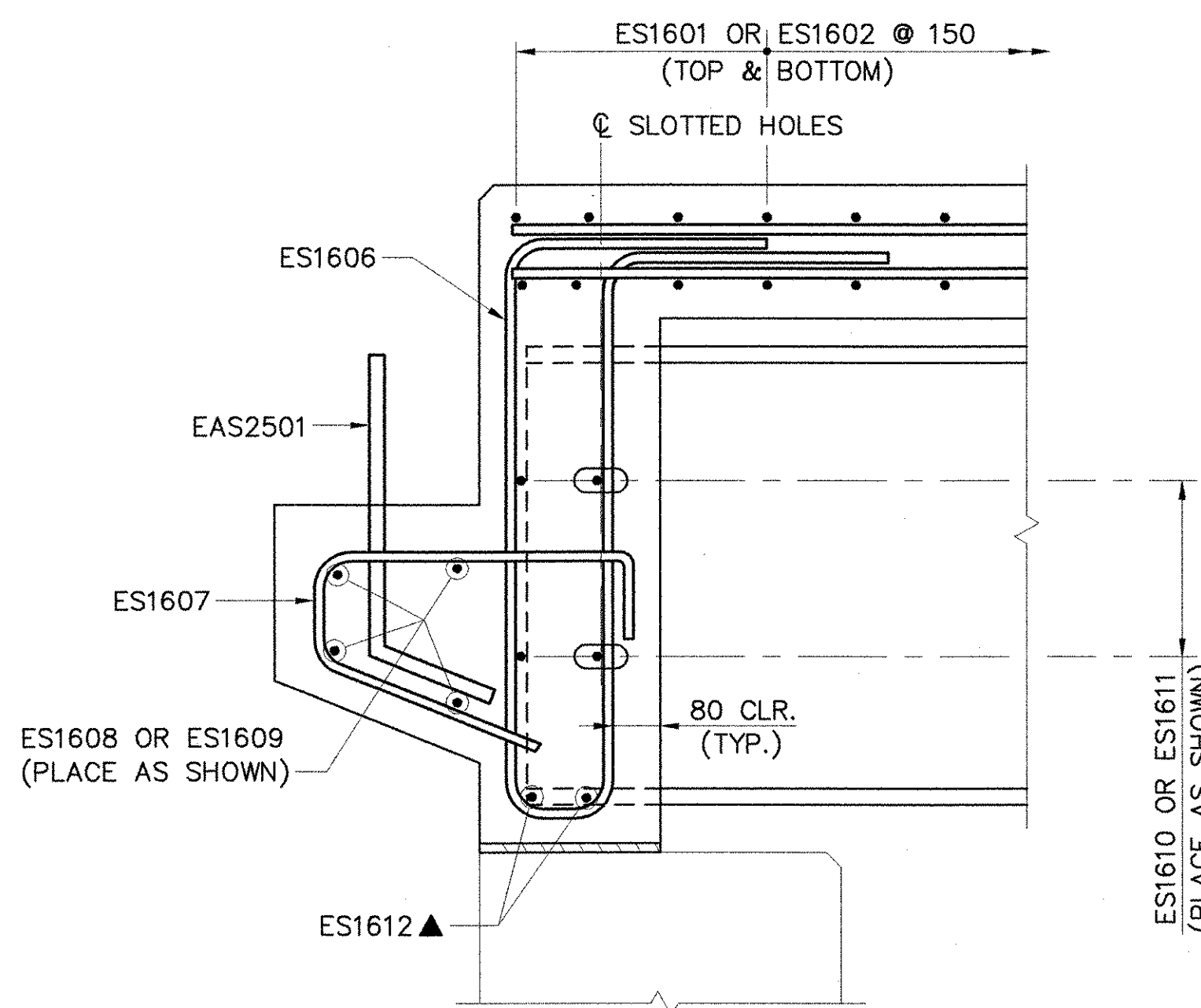
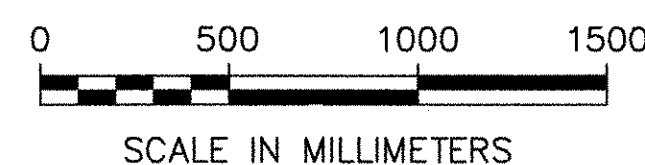
CURTAIN WALL CONSTRUCTION JOINT DETAIL

(ABUT. NO. 2 LOCATION SHOWN, ABUT. NO. 1 SIMILAR)
 N.T.S.



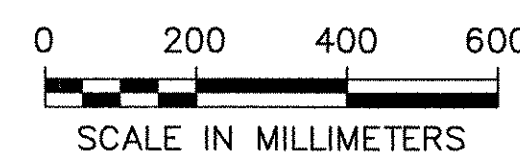
ELEVATION

(PERPENDICULAR TO CENTERLINE BEAMS)
 SCALE: 1:20



SECTION A-A

(PERPENDICULAR TO CENTERLINE BEARING)
 SCALE: 1:10



KEY

- N.F. = NEAR FACE
- F.F. = FAR FACE
- E.F. = EACH FACE
- ▲ = CUT TO FIT IN FIELD

STATE OF VERMONT AGENCY OF TRANSPORTATION

Town Of	FAYSTON	Bridge No.	36
Highway No.	VT 17	Log Sta.	
		Surv. Sta.	
VT 17 OVER MILL BROOK			

CURTAIN WALL

Designed By	M.A. COLGAN	Drawn By	B.J. MASSE
Checked By	S.M. SAREAULT	Date	1/06
		Bridge Design Supervisor	M.A. COLGAN
		Date	1/06

PROJECT	FAYSTON	PROJECT NO.	BHF 0200(9)
---------	---------	-------------	-------------

I.G.C. Info.	Bridge Sheet No. 50543DTL	Sheet	22 of 70
--------------	---------------------------	-------	----------