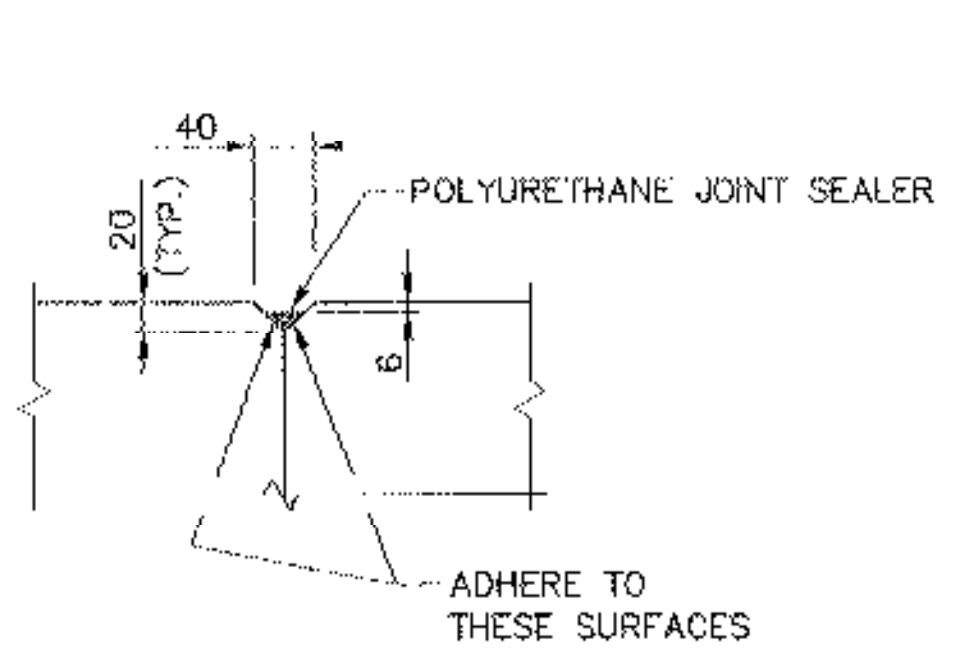
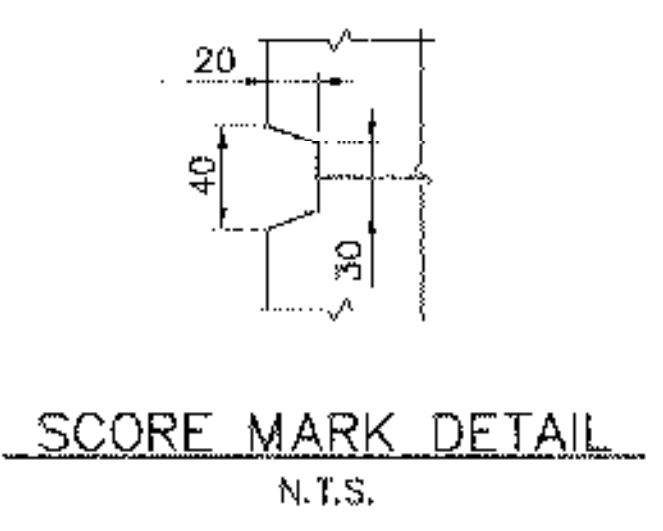


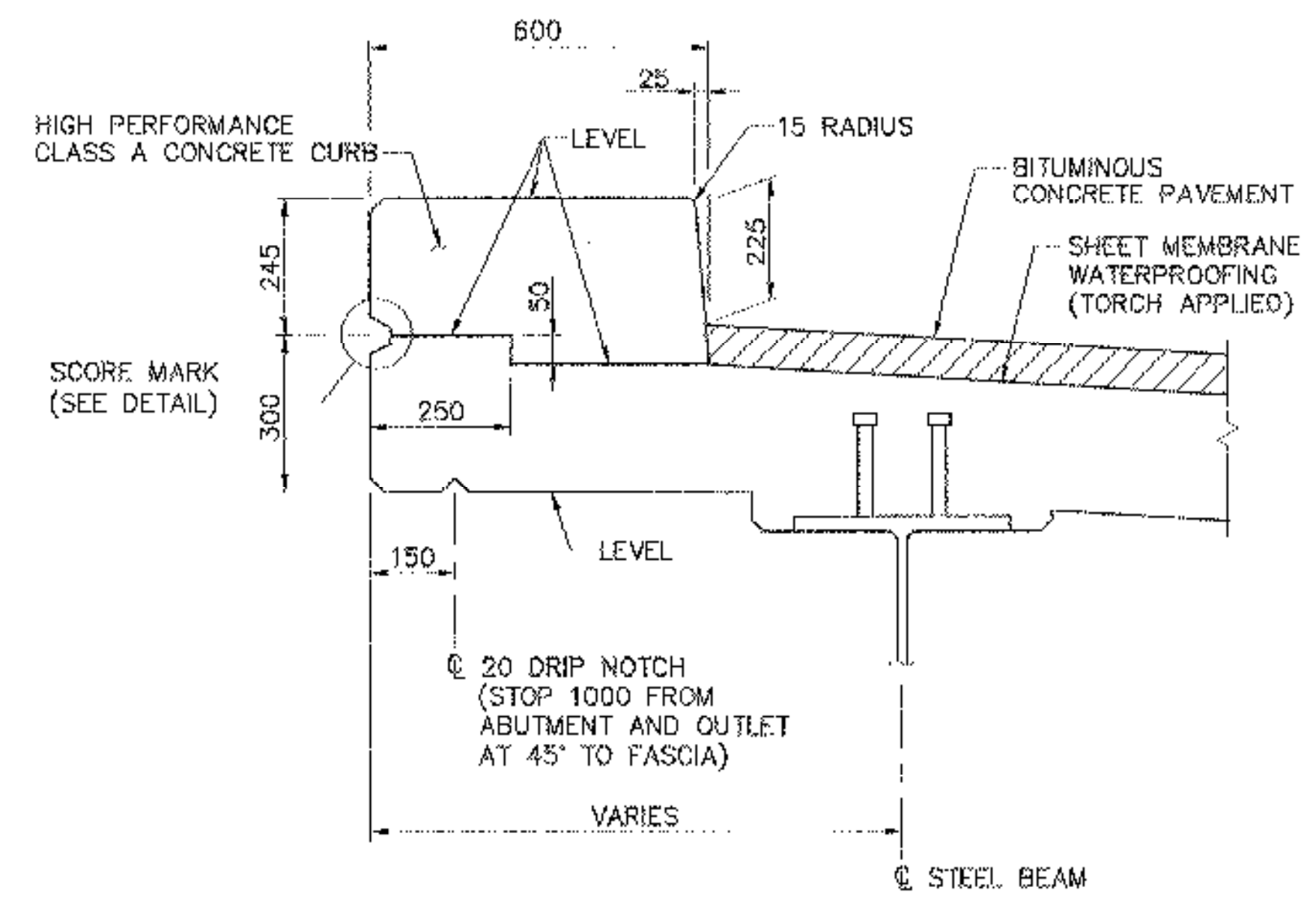
TYPICAL SECTION



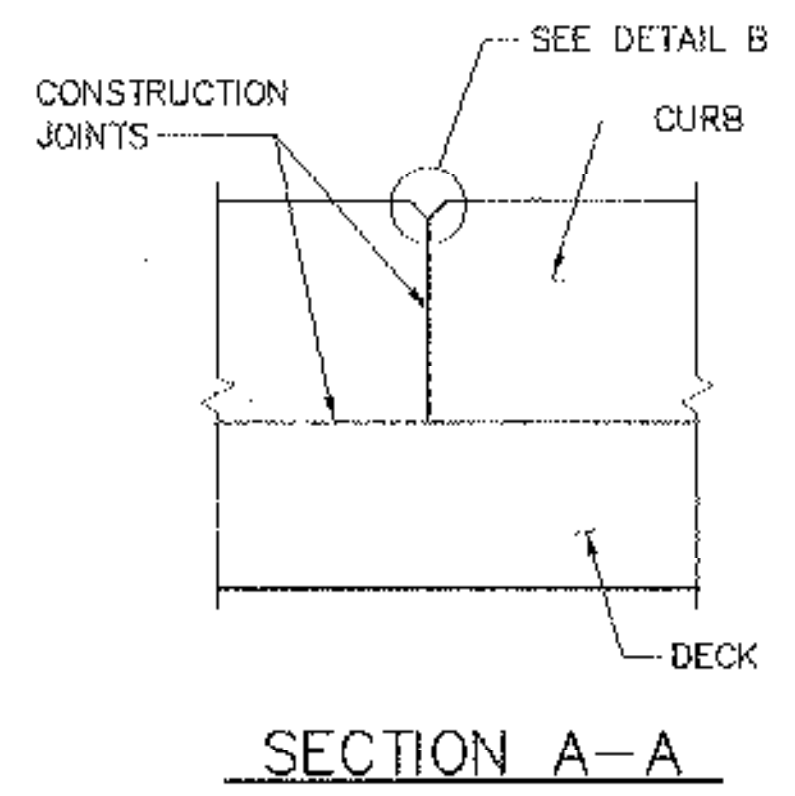
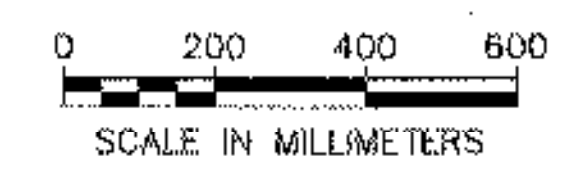
DETAIL B



SCORE MARK DETAIL
N.T.S.



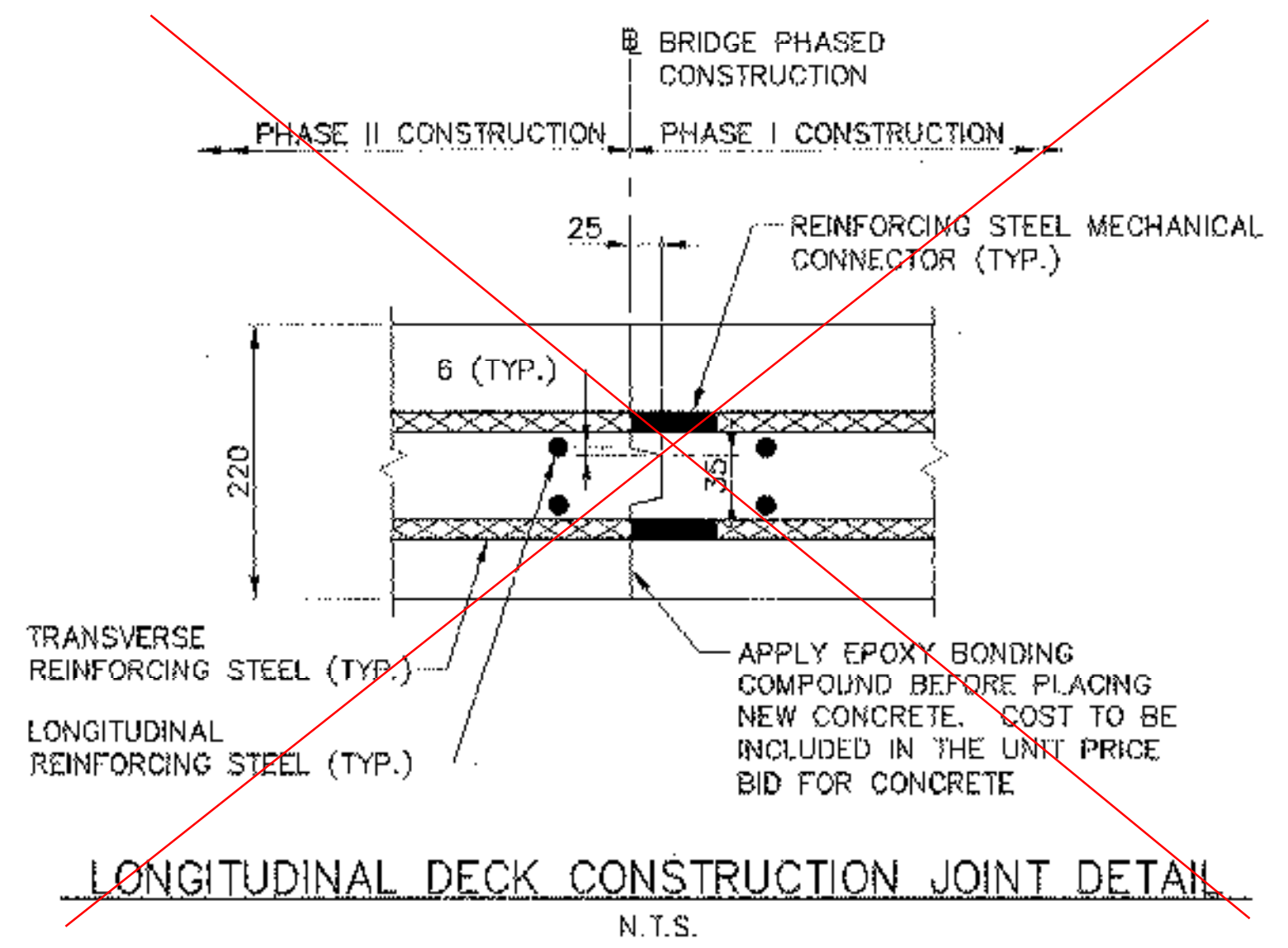
TYPICAL CURB DETAIL
(BRIDGE RAIL NOT SHOWN)
SCALE: 1:10



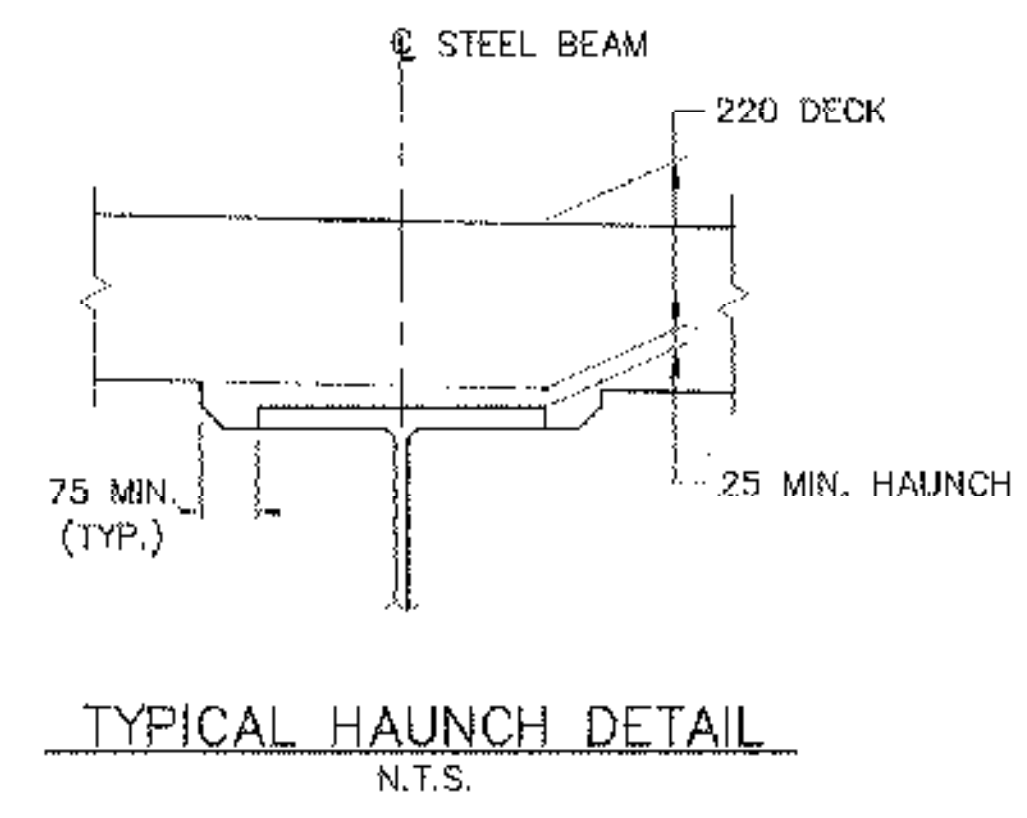
SECTION A-A

- CURB CONSTRUCTION JOINT NOTES:**
1. CONCRETE CURB CONSTRUCTION JOINTS SHALL BE SPACED A MAXIMUM OF 4500 mm CENTER TO CENTER AND SHALL BE 550 mm MINIMUM FROM THE CENTER OF THE NEAREST BRIDGE RAIL POST. CONCRETE SHALL BE PLACED IN ALTERNATING SECTIONS WITH A MINIMUM OF 48 HOURS BETWEEN ADJACENT POURS.
 2. LONGITUDINAL REINFORCING SHALL PASS THROUGH CONCRETE CURB CONSTRUCTION JOINTS UNLESS OTHERWISE SHOWN.
 3. POLYURETHANE JOINT SEALER, PER SUBSECTION 524.06(c), SHALL MATCH THE CONCRETE COLOR. COST TO BE INCLUDED IN THE UNIT PRICE BID FOR CONCRETE.

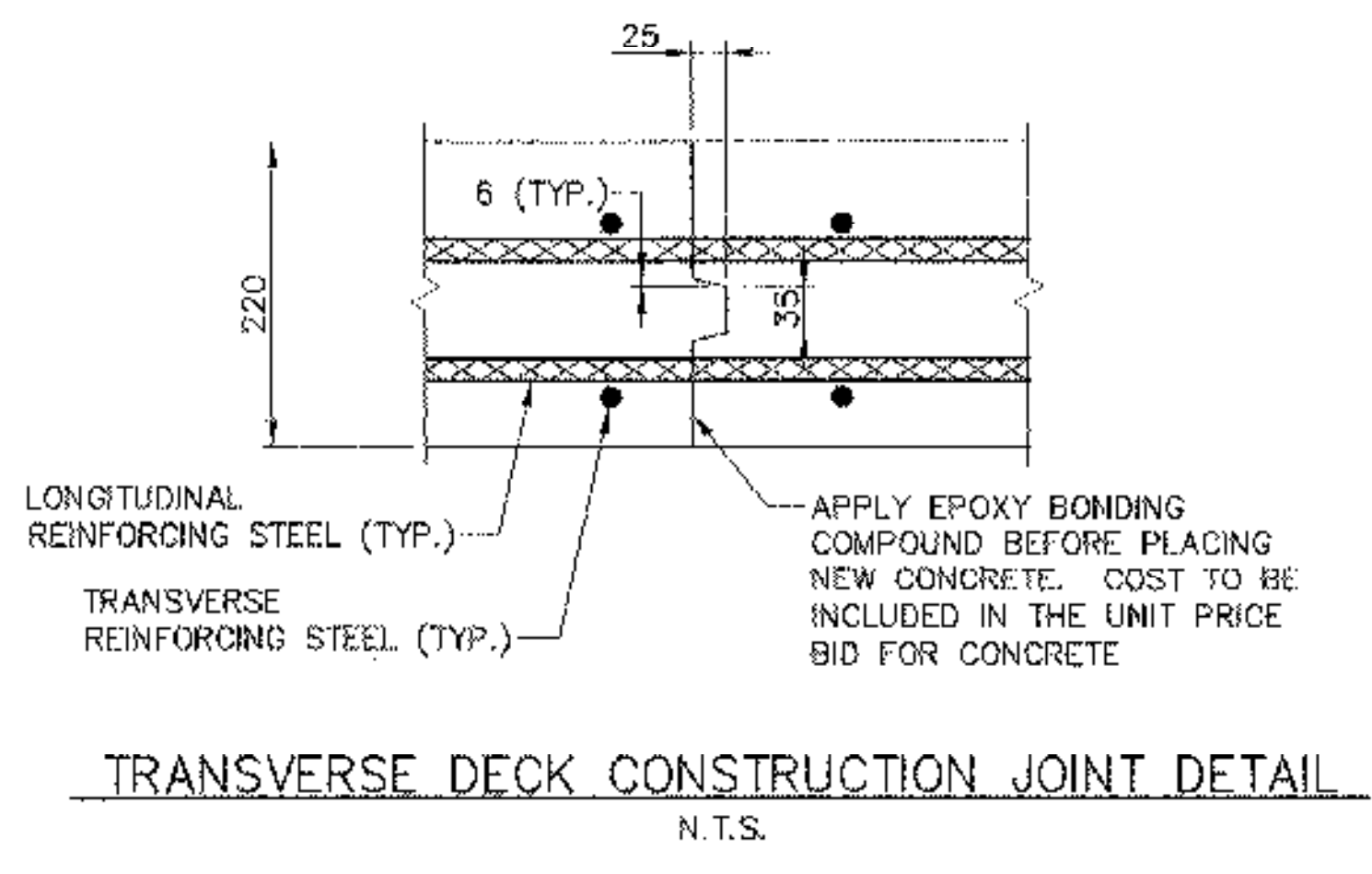
CONCRETE CURB CONSTRUCTION JOINT
N.T.S.



LONGITUDINAL DECK CONSTRUCTION JOINT DETAIL
N.T.S.



TYPICAL HAUNCH DETAIL
N.T.S.



TRANSVERSE DECK CONSTRUCTION JOINT DETAIL
N.T.S.

STATE OF VERMONT AGENCY OF TRANSPORTATION			
Town Of	FAYSTON	Bridge No.	36
Highway No.	VT 17	Log Sta.	
		Surv. Sta.	
VT 17 OVER MILL BROOK			
DECK DETAILS			
Designed By	M.A. COLGAN	Drawn By	B.J. MASSE
Checked By	Date	Bridge Design Supervisor	
	M.A. COLGAN 1/06	M.A. COLGAN	date 1/06
PROJECT	FAYSTON	PROJECT NO.	BHF 0200(9)
I.G.C. Info.			
Bridge Sheet No.	50543TS	Sheet	20 of 70