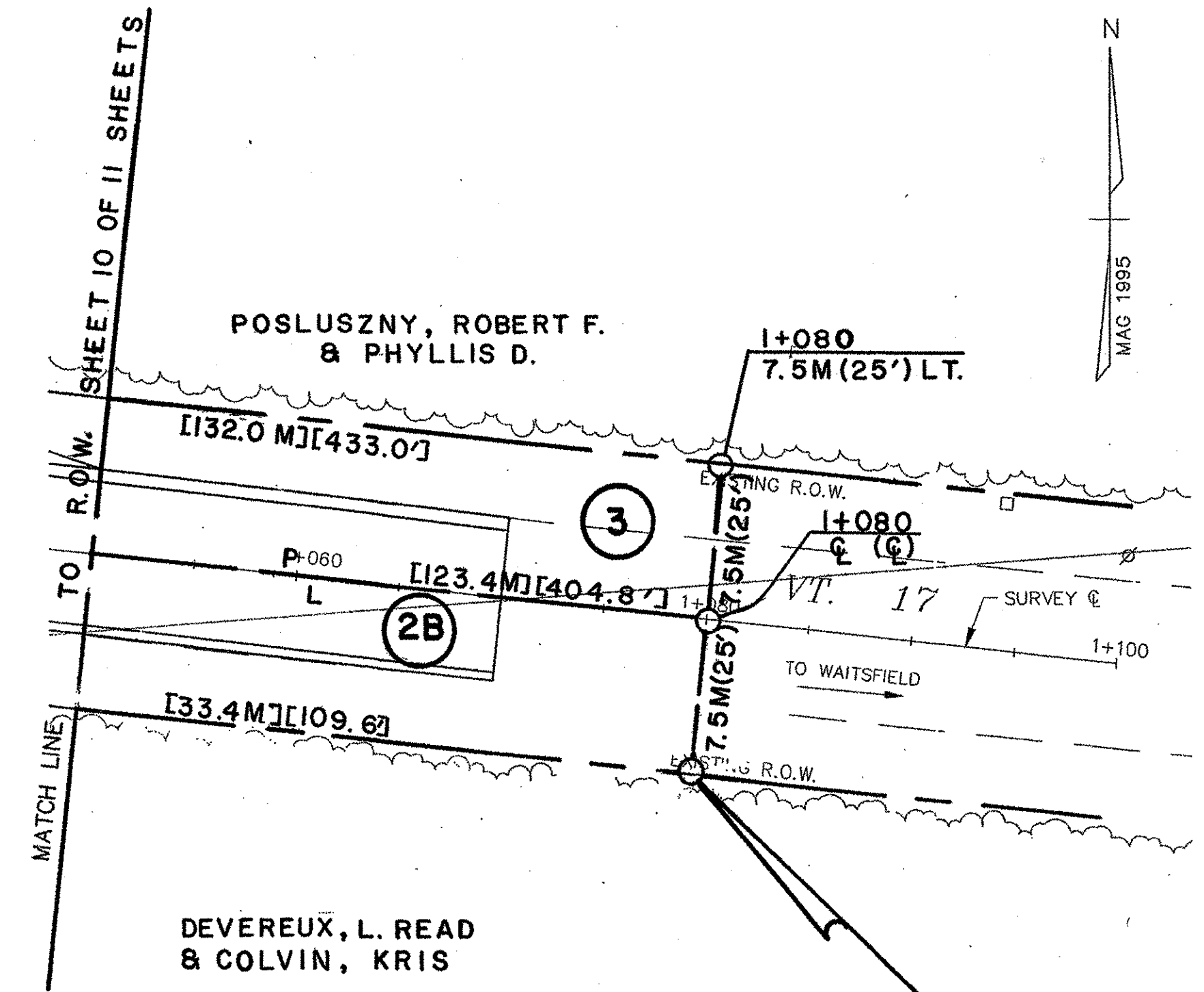


BEGIN R.O.W. PROJECT
 BHF 0200(9) STA. 0+807.3 7.5M (25') LT.



END R.O.W. PROJECT
 BHF 0200(9) STA. 1+080 7.5M (25.0') RT.

**FOR ROW
 USE ONLY**

LINES SHOWN ON THIS PLAN AS EXISTING PROPERTY LINES (P/L) ARE BELIEVED TO BE ACCURATE BUT SHOULD NOT BE RELIED UPON FOR PURPOSES UNRELATED TO THE STATE OF VERMONT'S ACQUISITION OF LAND AND RIGHTS FOR THIS PROJECT.

- NOTES:**
1. COLD PLANING AND PAVEMENT SHIMMING WILL BE REQUIRED FROM SURVEY C STA. 0+890 TO BEGIN APPROACH AND FROM END APPROACH TO SURVEY C STA. 1+070.
 2. SEE SHEET 47 FOR TEMPORARY EROSION CONTROL.

CONSTRUCTION NOTES

HEAVY DUTY STEEL BEAM GUARD RAIL
 STA. 0+831.1 - STA. 0+860.0 LT.

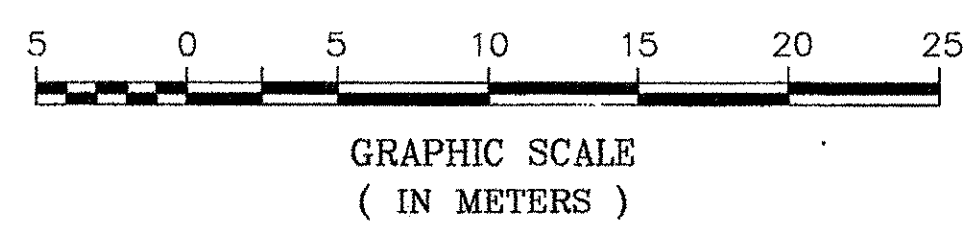
MANUFACTURED TERMINAL SECTION
 STA. 0+819.4 - 0+831.1 LT.

COLD PLANING BIT. CONCRETE PAVEMENT
 REV. STA. 1+050.0 - STA. 1+070.0

DURABLE 100 mm WHITE LINE
 STA. 1+050.0 - STA. 1+070.0 LT, RT

DURABLE 100 mm YELLOW LINE
 STA. 1+050.0 - STA. 1+070.0 (DOUBLE CENTER LINE)

PLAN
 SCALE: 1:250



FOR EROSION SHEET
 SEE R.O.W. SHEET 8 OF 11 SHEETS

VANASSE HANGEN BRUSTLIN, INC.

STATE OF VERMONT AGENCY OF TRANSPORTATION	
Town Of FAYSTON	Bridge No. 36
Highway No. VT 17	Log Sta.
VT 17 OVER MILL BROOK	
PLAN (2 OF 2)	
Designed By S.M. GUNN	Drawn By R.F. CLARK
Checked By _____ Date _____	Bridge Design Supervisor _____ Date _____
PROJECT FAYSTON	PROJECT NO. BHF 0200(9)
I.G.C. Info.	
SHEET 8 OF 70 SHEETS	