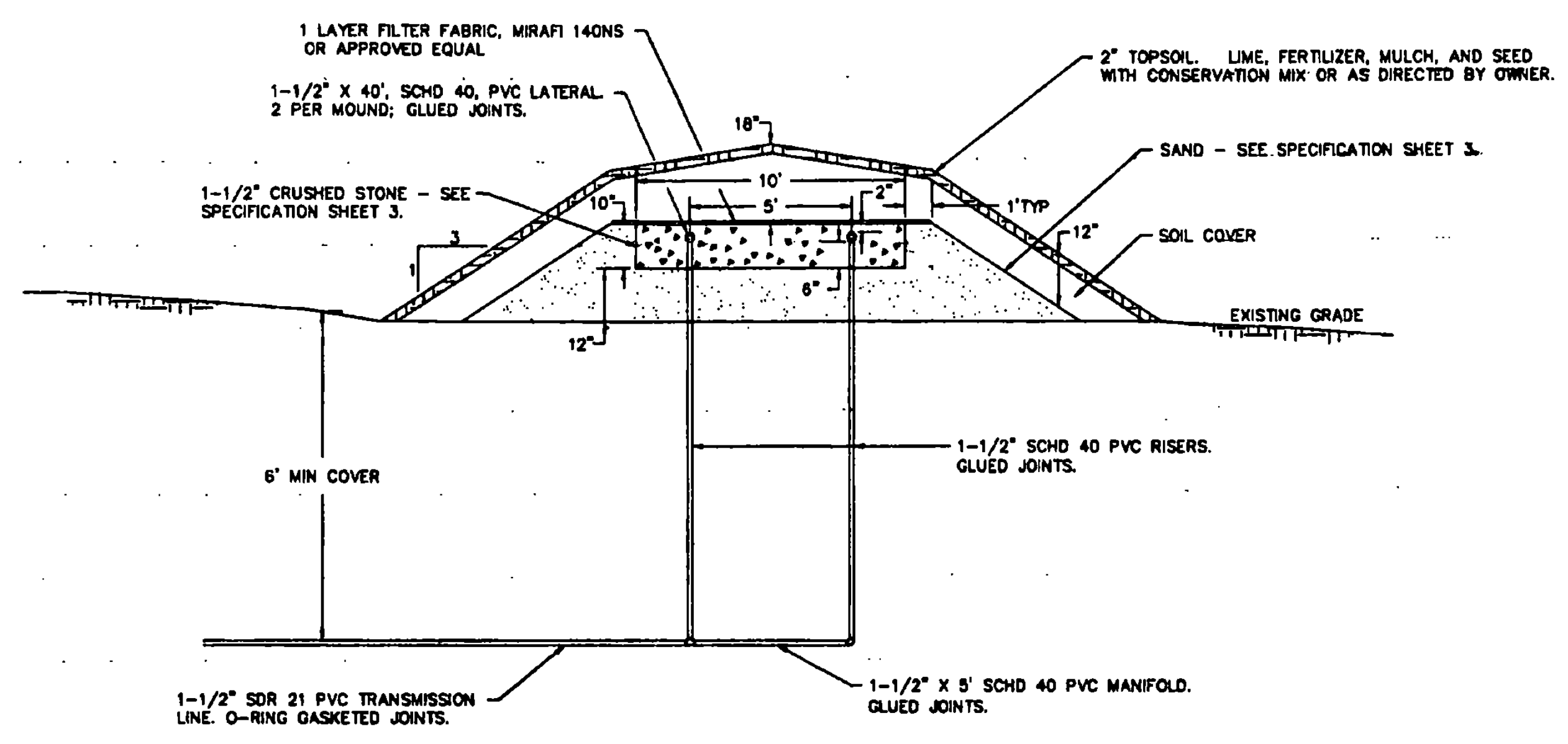
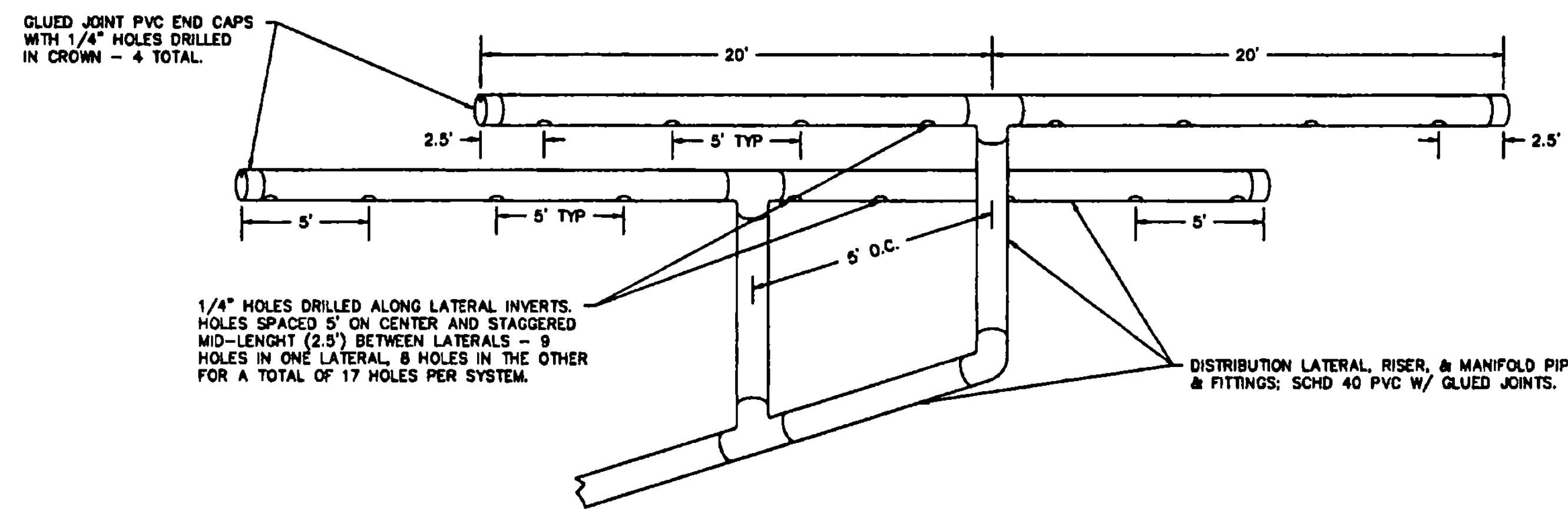


DISPOSAL MOUND DETAIL PLAN
SCALE: 1" = 10.0'



DISPOSAL MOUND DETAIL SECTION 1

SCALE:
HORIZONTAL - 1" = 4.0'
VERTICAL - 1" = 2.0'



DISPOSAL MOUND DISTRIBUTION PIPING

SCALE: NONE

**DISPOSAL MOUND CONSTRUCTION REQUIREMENTS
IN CONFORMANCE WITH EPR 7.14EE**

1. To prevent compaction, construction equipment shall not be moved across the plowed surface or the effluent dispersal area. However, after placement of a minimum of six (6) inches of sand fill over the plowed area, construction equipment may be driven over the protected surface to expedite construction. Construction and/or plowing shall not be initiated when the soil moisture content is high. (If a sample of soil obtained from approximately nine (9) inches below the surface can be easily rolled in a wire, the soil moisture content is too high for construction purposes.)

2. Above-ground vegetation shall be closely cut and removed from the ground surface throughout the area to be utilized for the placement of the fill material. Prior to plowing, the dosing pump discharge line from the pump chamber to the point of connection with the distribution piping header shall be installed. The area shall then be plowed to a depth of seven (7) to eight (8) inches, parallel to the land contour with the plow throwing the soil up-slope to provide a proper interface between the fill and natural soil. Tree stumps should be cut flush with the surface of the ground and roots should not be pulled. Once plowing of the mound area is completed, the area shall be fenced to prevent vehicles and equipment from entering the plowed area.

3. The area surrounding the mound shall be graded to provide diversion of surface run-off waters.

4. Construction should be initiated immediately after preparation of the soil interface by placing all of the sand fill needed for the mound to a minimum depth of twenty-one (21) inches above the plowed surface (thirty-three (33) inches where fractured bedrock is the limiting layer). This depth will permit excavation of trenches or bed to accommodate the crushed stone (8") necessary for the distribution piping. After hand leveling of the absorption area, the stone shall be placed into the trench, hand leveled and the distribution pipe installed. The consultant shall direct the testing of the distribution system. After installation of the distribution system, the entire mound is to be covered with top soil native to the site, or of similar characteristics to support vegetation found in the area. Crown the entire mound with cover of soil less permeable than the mound fill, covering with 12" on the side slopes, and a minimum of eighteen (18) inches over the center of the mound. Native soil from the site is normally suitable for cover material, though the top 2" - 4" of this cover should be top soil. The entire mound shall be seeded, sodded, or otherwise provided with vegetative cover, to assure stability of the installation.

Jon E. Allen



2 4/28/96 ADDED SHEET NO. TO TITLE BLOCK JEA GAK
1 6/23/95 ADDED MOUND CONSTRUCTION NOTES JEA GAK

REV. NO.	DATE	DESCRIPTION	MADE BY	CHECKED BY	APPROVED BY
ALBURG WELCOME CENTER ALBURG, VERMONT SEWAGE DISPOSAL SYSTEM DISPOSAL MOUND DETAILS <i>NH 028-1(1)S</i>					
DESIGN	JEA	VERMONT SURVEY AND ENGINEERING, INC. 56 EAST STATE STREET - MONTPELIER, VERMONT - 05602	PROJECT NO.	11295	
SCALE	AS INDICATED	JUN E. ALLEN	DATE	5/17/95	ISSUED NO. 4/3
					SHEET NO. 17/21