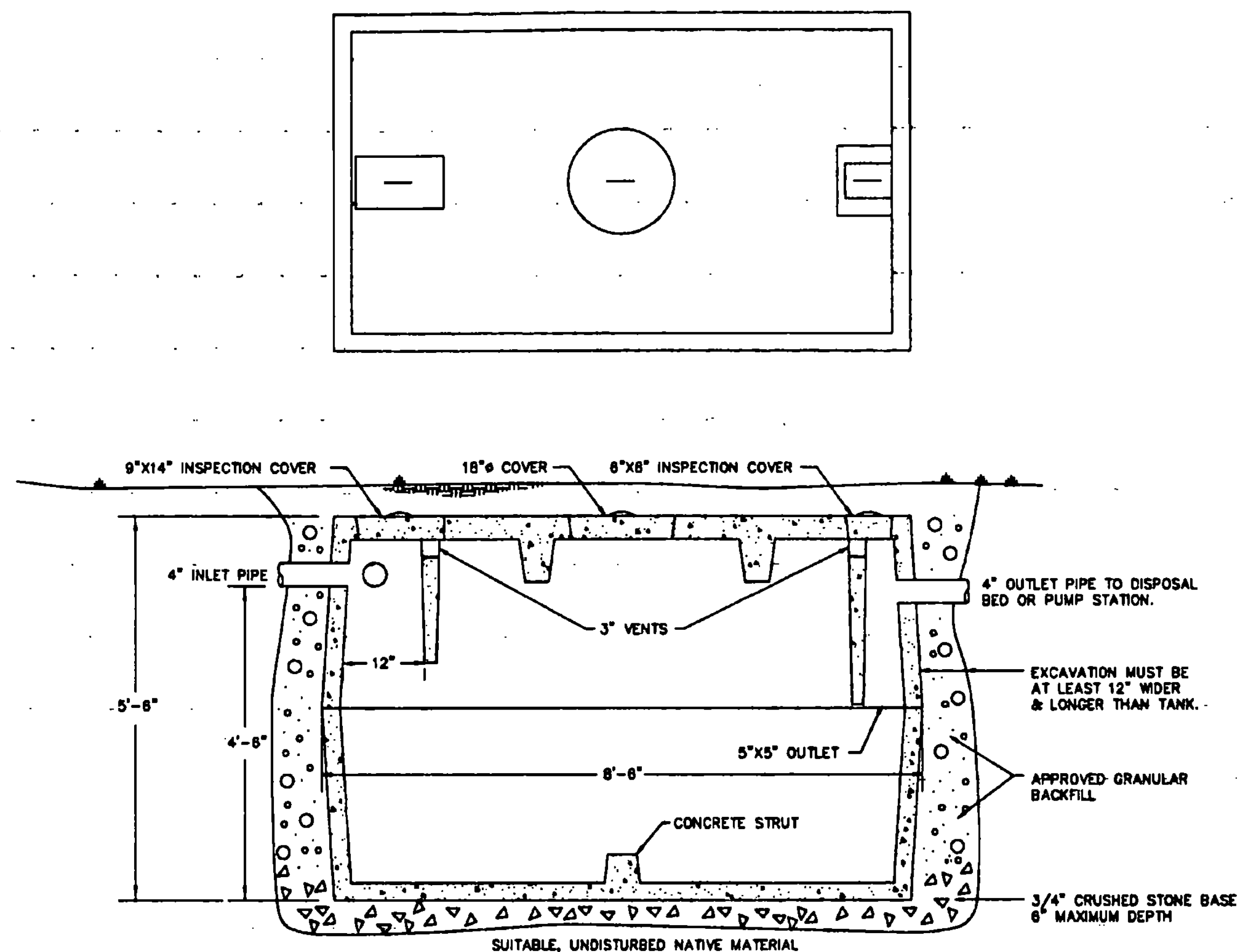


PUMPING SYSTEM

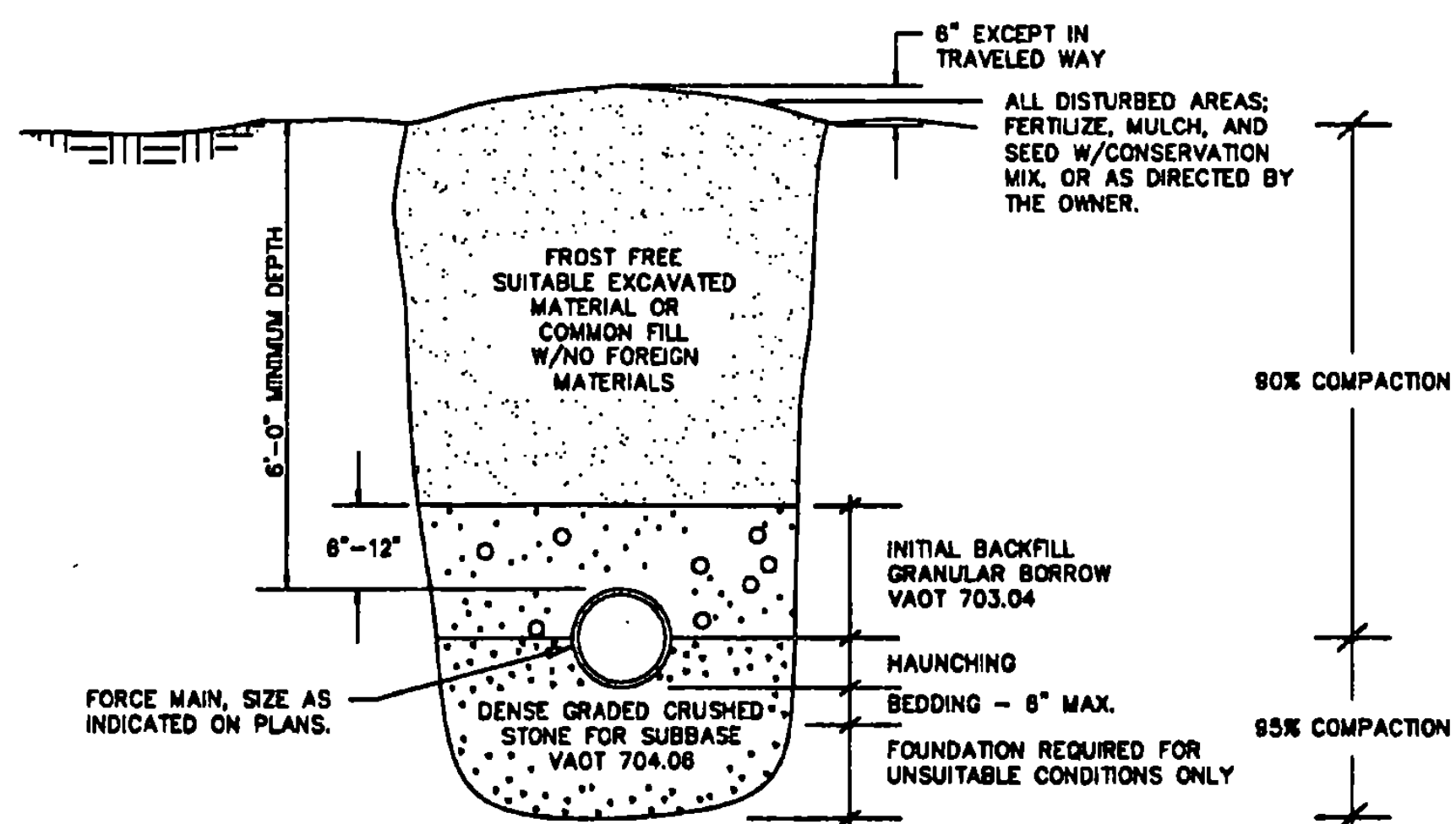
1. PUMP - HYDROMATIC SHEF33, OR APPROVED EQUAL; 230V, 1P, 28 GPM @ 19 TDH
2. SYSTEM SHALL BE INSTALLED WITHOUT A CHECK VALVE WITH FORCE MAIN CAPABLE OF BACK DRAINING.
3. CONTROLS - MODEL JSD, S.J. ELECTRO SYSTEMS MERCURY TILT SWITCH, OR APPROVED EQUAL; SET @ 140 GALS. PUMPED VOLUME PER CYCLE. CONTRACTOR RESPONSIBLE FOR SETTINGS IF HE SUBSTITUTES ANOTHER PUMP STATION.
4. HIGH WATER ALARM - MODEL LB-50, OHIO ELECTRIC CONTROL, INC., OR APPROVED EQUAL. AUDIO & VISUAL ALARM INSTALLED IN THE WELCOME CENTER @ THE OWNER'S LOCATION.

PUMP STATION
NOT TO SCALE




SEPTIC TANK
NOT TO SCALE

1. PRE-CAST REINFORCED CONCRETE - 4000 PSI @ 28 DAYS.
2. 1000 GALLON, TWO COMPARTMENT DESIGN.
3. INLET Baffle AND OUTLET CHAMBER PRE-CAST WITH TOP SECTION OF TANK.
4. KEYED JOINT SEALED WITH ASPHALT CEMENT OR EQUIVALENT.
5. PRIOR TO INSTALLATION, PLUG FROST HOLES WITH GROUT.



SEWER LINE TRENCH TYPICAL
NOT TO SCALE

Jon E. Allen


CONSTRUCTION SPECIFICATIONS

THE PROJECT:

Provide, construct, test, and set operating a complete sewage disposal system including septic tank, pump station, disposal mound, interconnecting piping, pump, power and controls, and high-water alarm, all as shown on the Plans, specified herein, and directed by the Engineer.

Connect to the Alburg Village water system and construct a water service line to the Visitors Center as shown on the Plan and Details. Coordinate service connection with the Alburg water superintendent. Install water meter in the Visitors Center building as designated by the water superintendent. Meter will be provided by Alburg Village. Connection fee will be paid by the State of Vermont.

MATERIALS AND EQUIPMENT:

1. 1-1/2" Crushed Stone for disposal mound	VAOT 704.02 COARSE AGGREGATE FOR CONCRETE				
Sieve Designation	1-3/4"	1-1/2"	1"	3/4"	3/8"
% Passing	100	90-100	20-55	0-15	0-5
2. Sand for disposal mound:					
Sieve Designation	10	40	200		
% Passing	85	30-50	5-10		

3. Septic Tank:

1000 gallon; 4000 psi precast concrete; two compartment; Camp Precast or approved equal. Frost holes shall be properly plugged with grout prior to installation. "Ledge tank" may be substituted with Engineers approval.

4. Pump Station:

1. Vault - 1000 gallon precast, seamless concrete; Camp Precast or approved equal. Frost holes shall be properly plugged with grout prior to installation.

2. Pump - Hydromatic SHEF33 Effluent Pump or approved equal, 28 gpm @ 19 ft TDH.

3. Pump Controls - Model JSD, S.J. Electro Systems mercury tilt switch, or approved equal. Control set for a 140 gallon pumped volume per cycle. Control level settings given on the Pump Station Detail of the drawings are for this pump station only. Contractor is responsible for settings if he substitutes another pump station.

4. High Water Alarm - Model LB-50, Ohio Electric Control, INC., or approved equal. Audio & visual alarm installed in the Visitor's Center at owner's location.

4	4/28/95	ADDED SHEET NO. TO TITLE BLOCK	JEA	GAK
3	6/8/95	ADDED VENT & VALVE TO PUMP STA.	JEA	GAK
2	6/8/95	ADDED WATER TO SPECIFICATIONS	JEA	GAK
1	6/5/95	MOVED VALVE PIT TO 5/5	JEA	GAK

REV. NO.	DATE	DESCRIPTION	MADE BY	CHECKED BY	APPROVED BY
ALBURG WELCOME CENTER ALBURG, VERMONT SEWAGE DISPOSAL SYSTEM DETAILS NH 028-11725					
OWNER	JEA	DESIGNER	VERMONT SURVEY AND ENGINEERING, INC. SURVEYORS AND CIVIL ENGINEERS 58 EAST STATE STREET - MONTPELIER, VERMONT - 05602		PROJECT NO. 11295
SCALE	AS INDICATED	DRAWN BY	JON E. ALLEN	DATE	5/17/95
		CHECKED BY		DRAWING NO.	3/5
		APPROVED BY		SHEET NO.	16/21