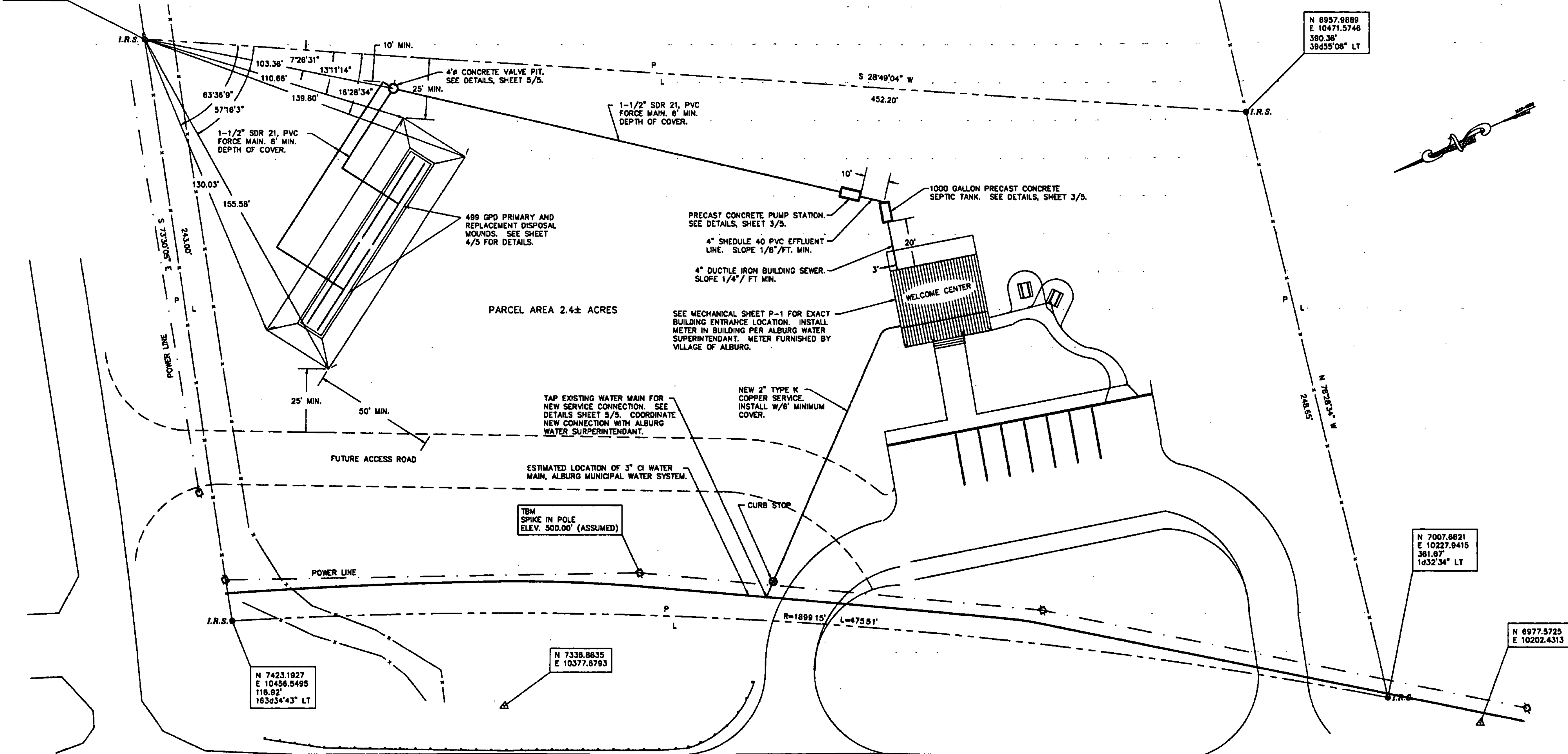


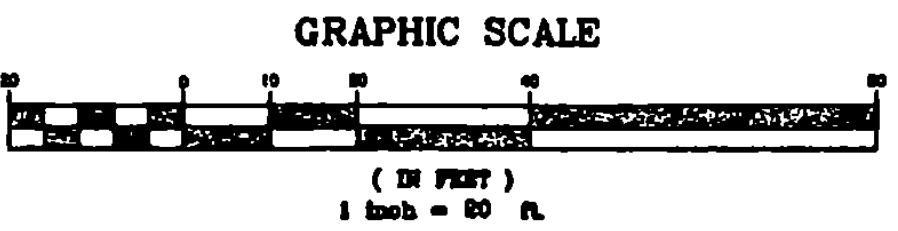
N 7354.1830  
E 10889.5445  
312.34'  
119d10'30" LT

N 8957.9889  
E 10471.5748  
380.36'  
39d55'08" LT



PARCEL AREA 2.4± ACRES

- 9 4/26/98 CHANGED WATER SERVICELINE TO 2" JEA GAK
- 8 4/26/98 CHANGED BUILDING WATERLINE JEA GAK  
ENTRANCE NOTE
- 7 4/26/98 CHANGED BUILDING WATERLINE JEA GAK  
ENTRANCE LOCATION
- 6 4/26/98 ADDED MOUND LAYOUT DIMENSIONS JEA GAK
- 5 4/26/98 MODIFIED FUTURE ACCESS ROAD JEA GAK
- 4 4/26/98 ADDED SHEET NO. TO TITLE BLOCK JEA GAK
- 3 8/23/95 ADDED PARCEL AREA JEA GAK
- 2 8/22/95 ADDED P/L COURSE AND DISTANCE JEA GAK
- 1 8/7/95 ADDED WATER CONNECTION JEA GAK



*J. E. Allen*



REV. NO.	DATE	DESCRIPTION	MADE BY	CHECKED BY	APPROVED BY
<b>ALBURG WELCOME CENTER</b> <b>ALBURG, VERMONT</b> <b>SEWAGE DISPOSAL SYSTEM</b> <b>PLAN</b> <b>NH 028-1(17)S</b>					
OWNER	JEA	VERMONT SURVEY and ENGINEERING, INC.	PROJECT NO.	11295	
DESIGNED BY	JEA	SURVEYING and CIVIL ENGINEERS	DATE	5/17/95	
SCALE	1" = 20.00'	88 EAST STATE STREET • MONTPELIER, VERMONT • 05602	DRAWING NO.	2/5	
DATE	5/17/95	DRAWN BY	JON E. ALLEN		
			SHEET NO. 15/21		