

HEATING & VENTILATING LEGEND

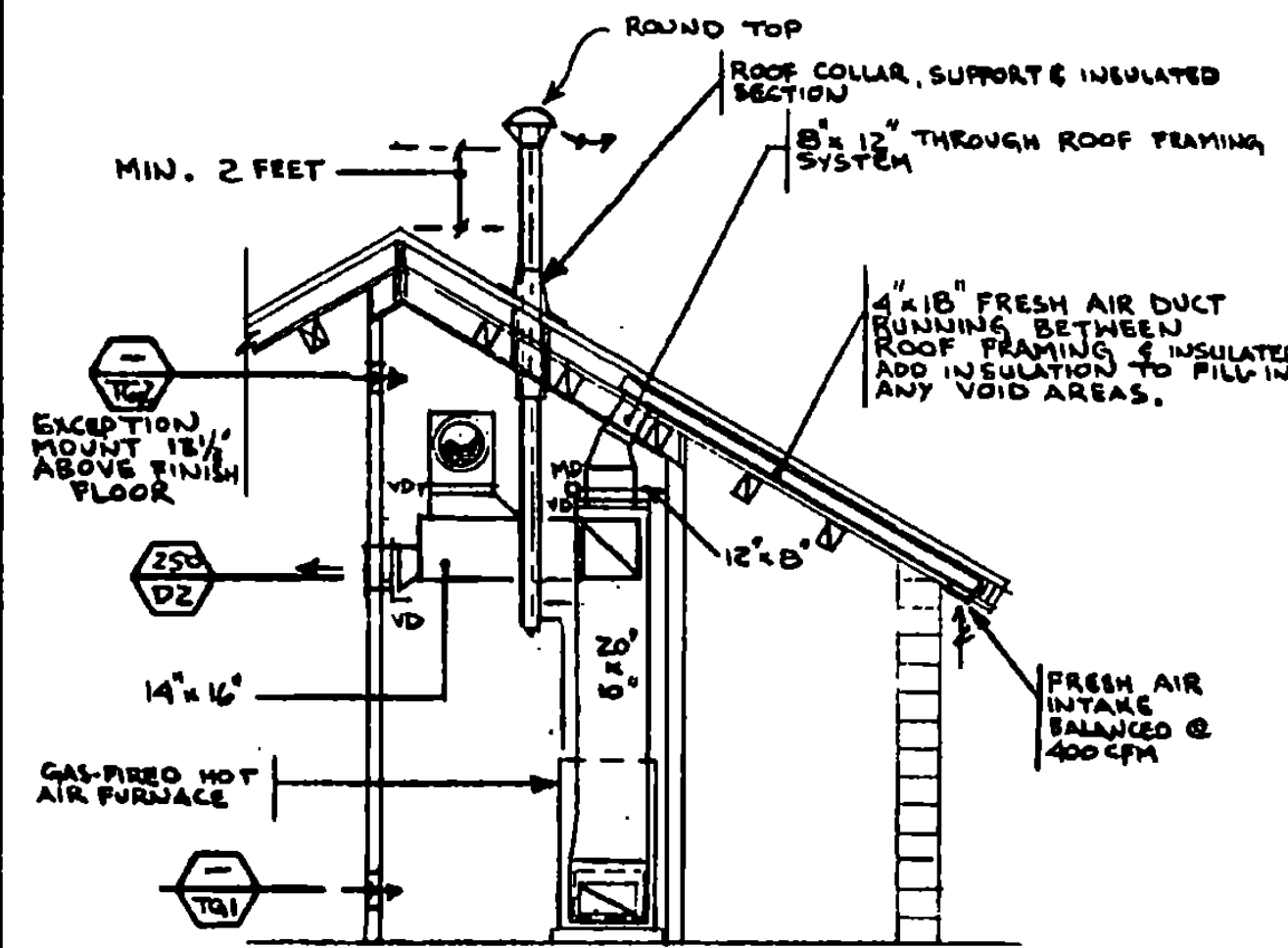
- AIR SUPPLY
- ← AIR EXHAUST OR RETURN
- VDI VOLUME DAMPER
- MD-D MOTORIZED DAMPER
- ARR ABOVE FINISH FLOOR TO CENTER LINE OF ITEM
- ⊕ TRANSFER GRILLE
- ⊖ THERMOSTAT
- ⊕ BALANCED CFM GRILLE DIFFUSER & REGISTER SYMBOL NO IN SCHEDULE

EQUIPMENT SCHEDULE: FURNISH & INSTALL THE FOLLOWING:

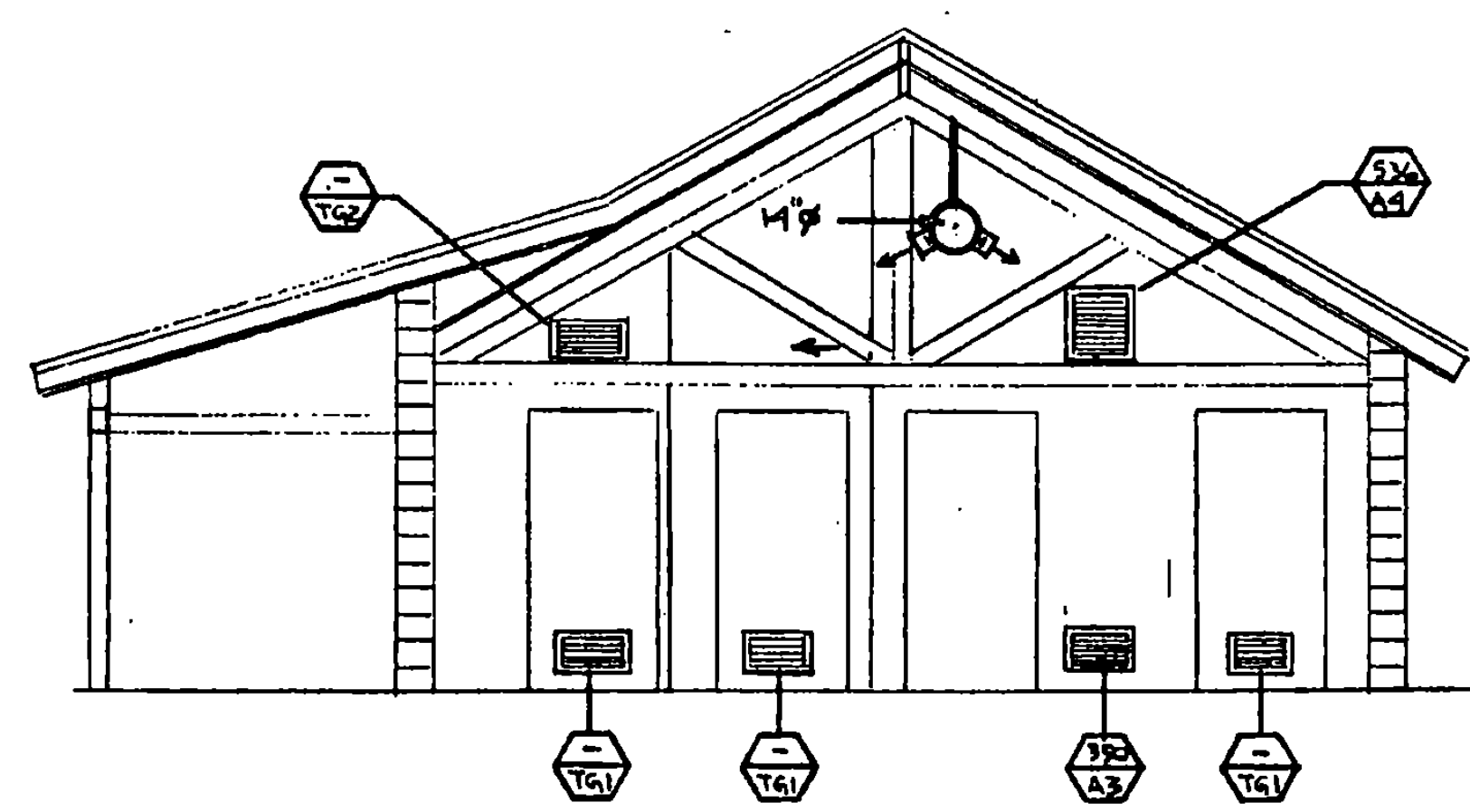
- GAS-FIRED HOT AIR FURNACE** - GAS-FIRED FURNACE RATED AT 75 MBH LPG INPUT, 60 MBH OUTPUT, 1236 CFM @ 5" STATIC PRESSURE, 1/3 HP - 120 VOLT / SINGLE PHASE W/ 4 SPEED SETTINGS, WIRED TO MED. HIGH SETTING, FURNISH W/ VENT DAMPER & FILTER UNIT MANUFACTURED BY THERMO PRIDE - HIGHBOY MODEL NO. 2WA-75 SECTIONAL UNIT (SEE SPEC.)
- ROOF EXHAUST FAN #1** - BELT-DRIVE ROOF MOUNTED EXHAUST FAN W/ PITCH ROOF CURB RATED @ 314 CFM, 3/8" S.P., 1/4 HP MOTOR, 1170 RPM WITH FAN HOUSING DISCONNECT SWITCH & MOTORIZED DAMPER, AS MANUFACTURER BY GREENHECK MODEL NO. 98-80-A (SEE SPEC.)

DIFFUSER, GRILLE & REGISTER SCHEDULE							LETTER
NO.	MAKE AND MODEL NO.	MOUNTING HEIGHT TO CENTER	NECK SIZE	OPPOSED BLADE DAMPER	CFM RANGE	AIR PATTERN	REMARKS
A1	TITUS #33 RL	8'-6"	12" x 8"	YES	100 - 150	30° DEFLC.	ALL STEEL HEAVY DUTY
A2	#33 RL	8'-6"	10" x 8"	YES	45 - 92	30° DEFLC.	
A3	#30 RL	10"	18" x 8"	YES	350 - 475	0° DEFLC.	
A4	#30 RL	9'-6"	18" x 18"	YES	500 - 850	0° DEFLC.	
D1	#272 RL	10'-6"	12" x 6"	YES	90 - 195	DOUBLE DEFLECTION	ALUMINUM
D2	#272 RL	9'-0"	12" x 12"	YES	250 - 400		
D3	#272 RL	11'-6"	18" x 6"	YES	170 - 250		
TQ1	TRANSFER GRILLE # T-700	14"	18" x 8"	N/A	-	SIGHT PROOF	ALL STEEL FLANGE & BORDER
TQ2	# T-700	9'-0"	18" x 8"	N/A	-	SIGHT PROOF	

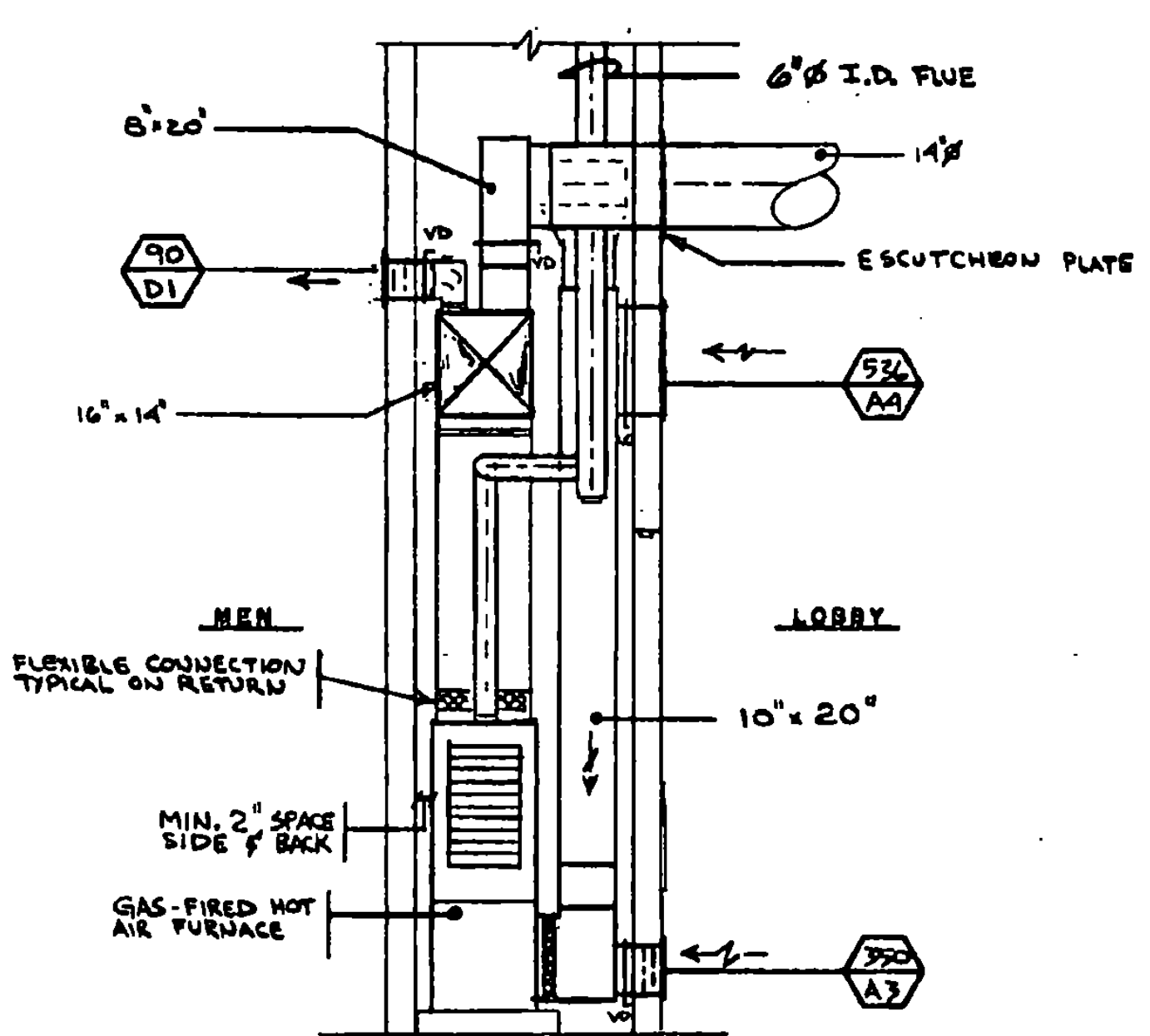
NOTE: MOUNTING HEIGHTS NOTED FROM FINISH FLOOR TO CENTER OF GRILLE.



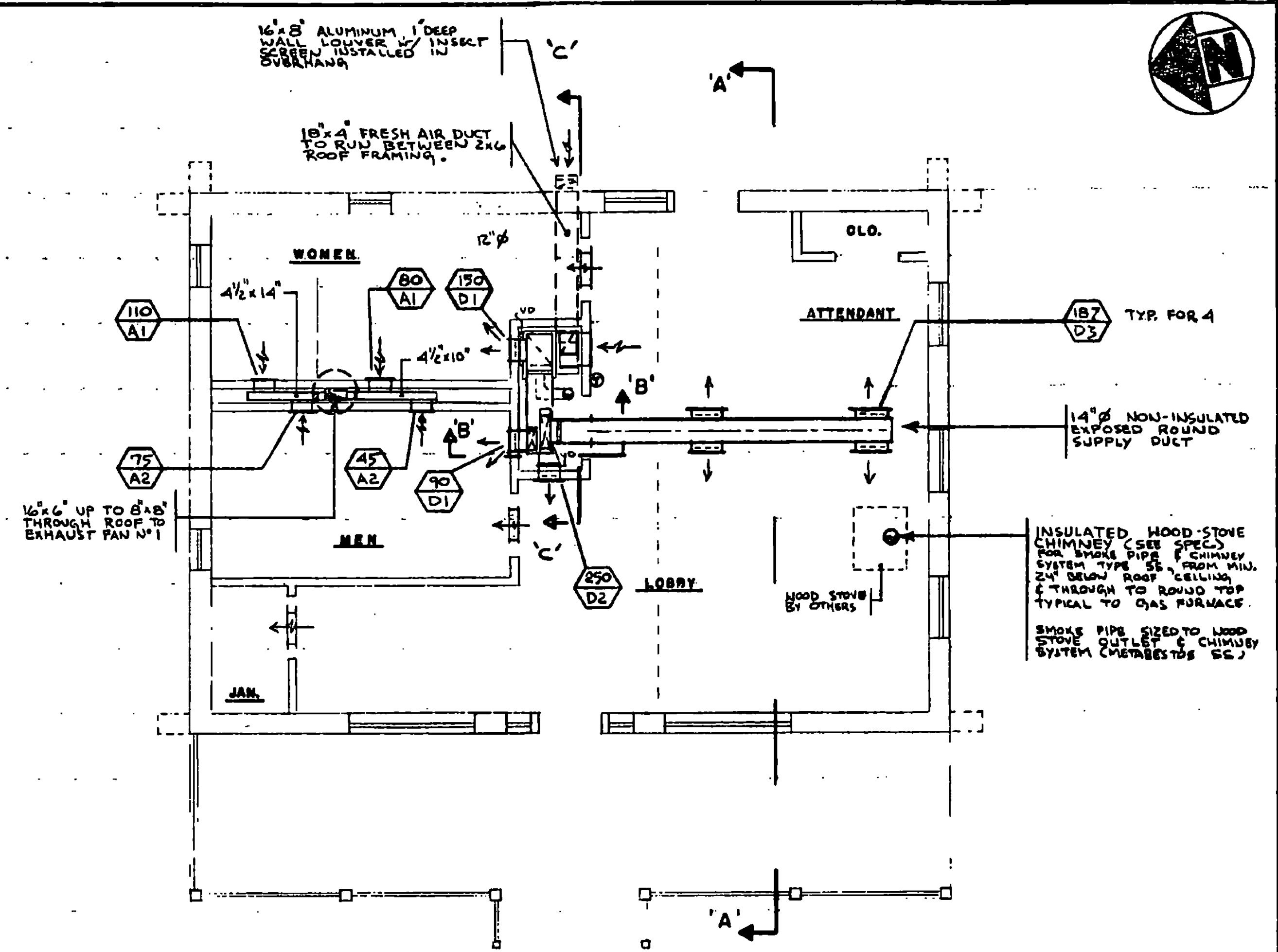
SECTION 'C-C'
SCALE: 1/4" = 1'-0"



SECTION 'A-A'
SCALE: 1/4" = 1'-0"



SECTION 'B-B'
SCALE: 1/2" = 1'-0"



HEATING & VENTILATING - FLOOR PLAN
SCALE: 1/4" = 1'-0"

STATE OF VERMONT
DEPARTMENT OF STATE BUILDINGS
AGENCY OF ADMINISTRATION
MONTPELIER, VERMONT

**ALBURG WELCOME CENTER
ALBURG**

HEATING & VENTILATING - FLOOR PLAN, LEGEND, SECTIONS & NOTES

DATE: 3-19-75	SCALE: AS NOTED	REVISIONS: 5/16-76	DWG. NO.: HV-1
DRAWN BY: KA	PROJECT NO.: NH02B-K(7)S		12 of 21

