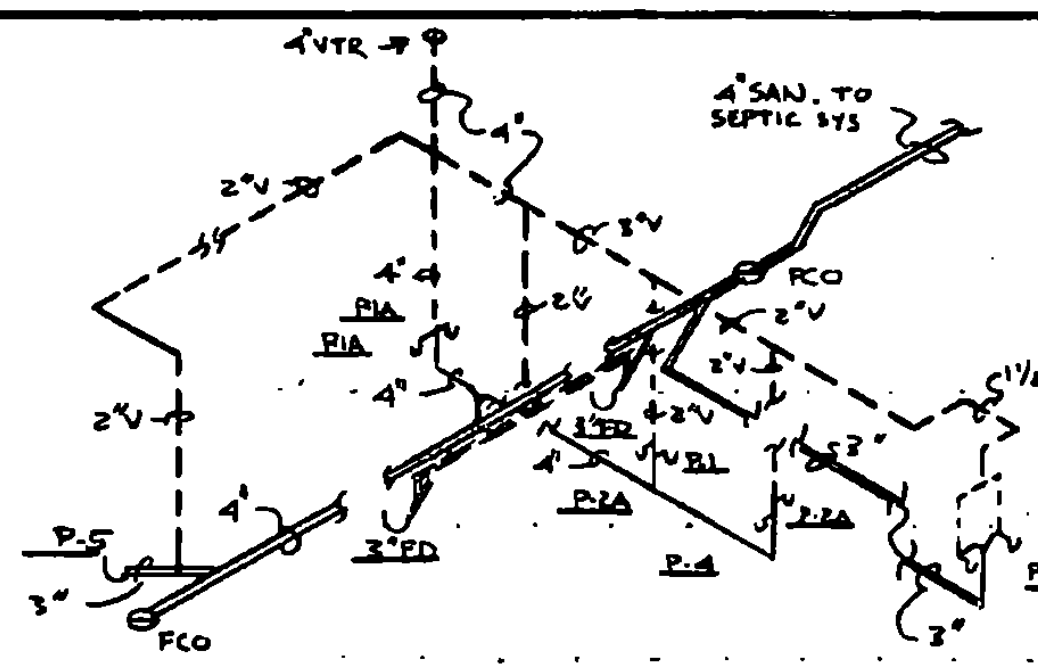
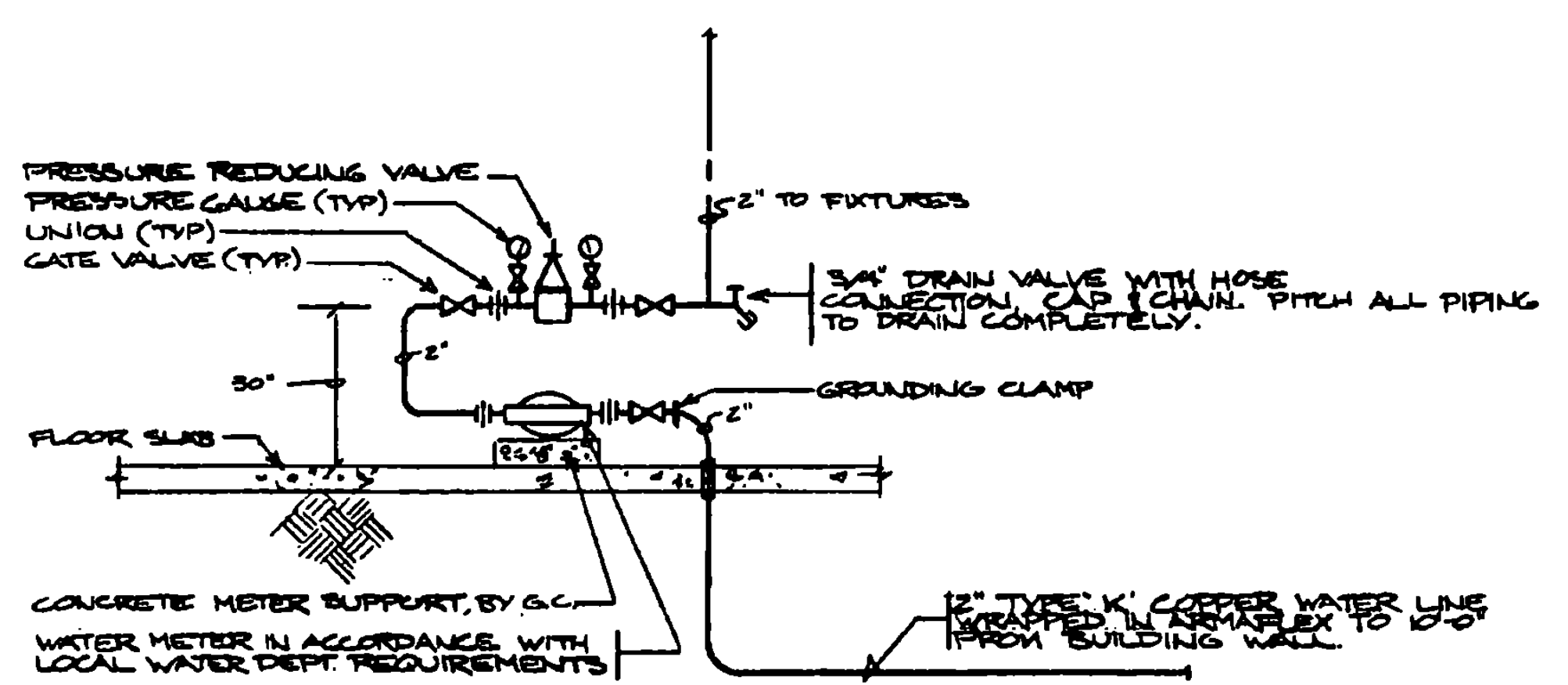


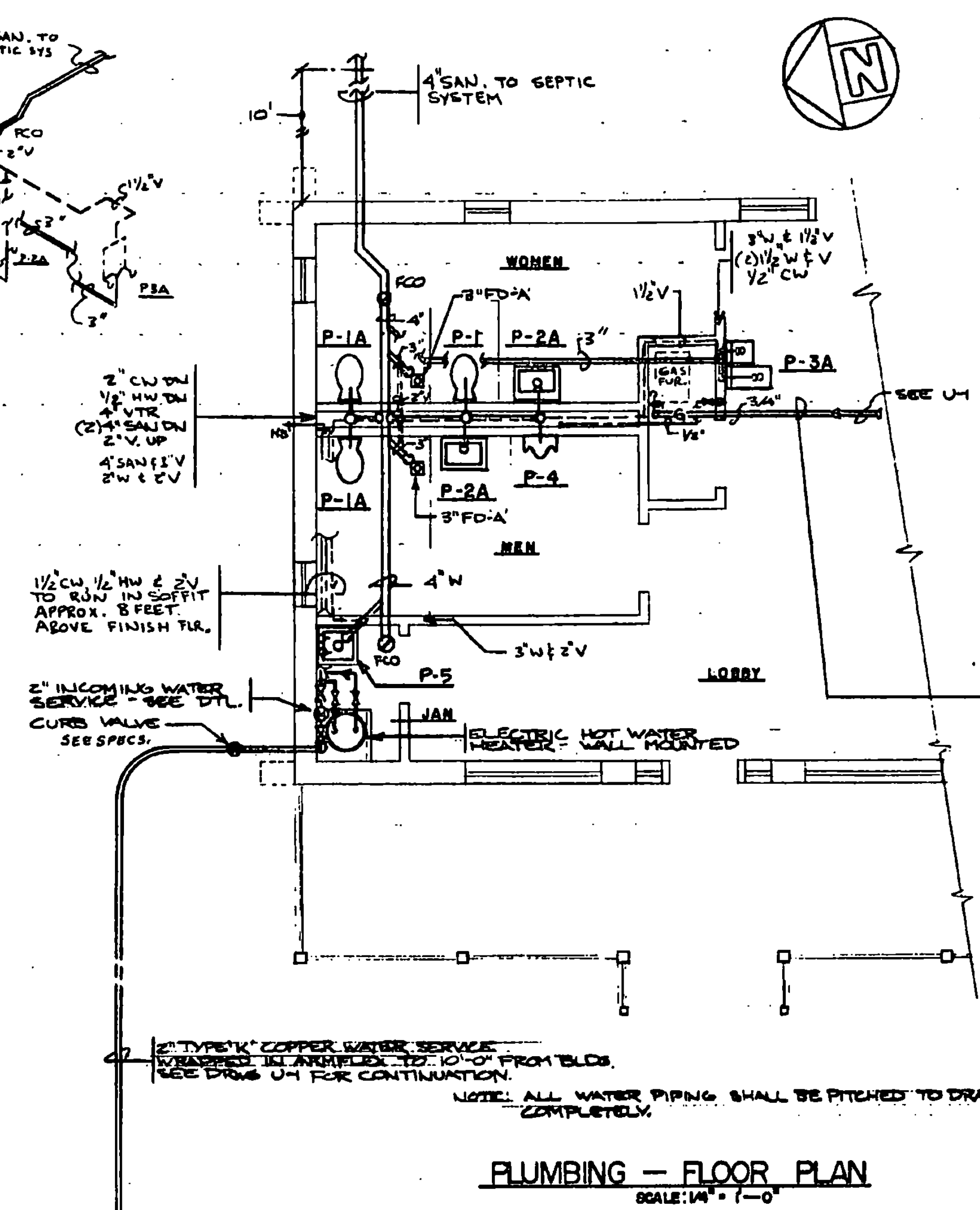
DETAIL OF FLUSH FLOOR CLEANOUT
NOT TO SCALE



SANITARY & VENT
ISOMETRIC DIAGRAM
NOT TO SCALE



INCOMING WATER SERVICE DETAIL
NOT TO SCALE



PLUMBING - FLOOR PLAN
SCALE: 1/4" = 1'-0"

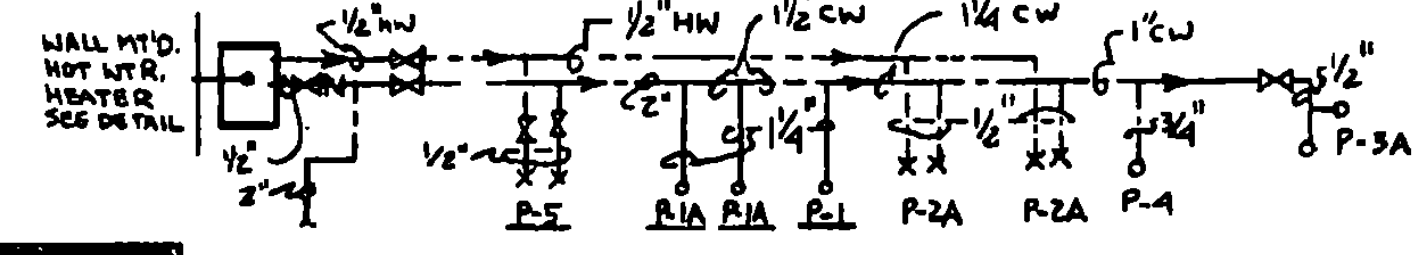
PLUMBING LEGEND
SYMBOLS USED ARE INDICATED BY A CHECK (✓)

✓	SANITARY OR WASTE LINE (ABOVE GROUND)
✓	SANITARY OR WASTE LINE (BELOW GROUND)
✓	STORM LINE (ABOVE GROUND)
✓	STORM LINE (BELOW GROUND)
✓	GAS LINE - C.L.P. (A.S.)
✓	COMPRESSED AIR LINE
✓	FIRE LINE
✓	VENT LINE (ABOVE GROUND)
✓	VENT LINE (BELOW GROUND)
✓	COLD WATER LINE (ABOVE GROUND)
✓	COLD WATER LINE (BELOW GROUND)
✓	HOT WATER LINE
✓	HOT WATER RECIRCULATING LINE
✓	CLEAN OUT
✓	FLOOR CLEAN OUT
✓	WALL HYDRANT OR HOSE BIB
✓	CLOSE VALVE
✓	CHECK VALVE
✓	BATZ VALVE
✓	FLOOR DRAIN WITH TRAP
✓	NEW
✓	EXISTING
✓	POINT OF PLUMBING CONNECTION TO
✓	SAN. SANITARY LINE
✓	ST. STORM LINE
✓	V. VENT LINE
✓	W. WASTE LINE
✓	T. TRAP
✓	R.D. ROOF DRAIN
✓	R.L. ROOF LEADER

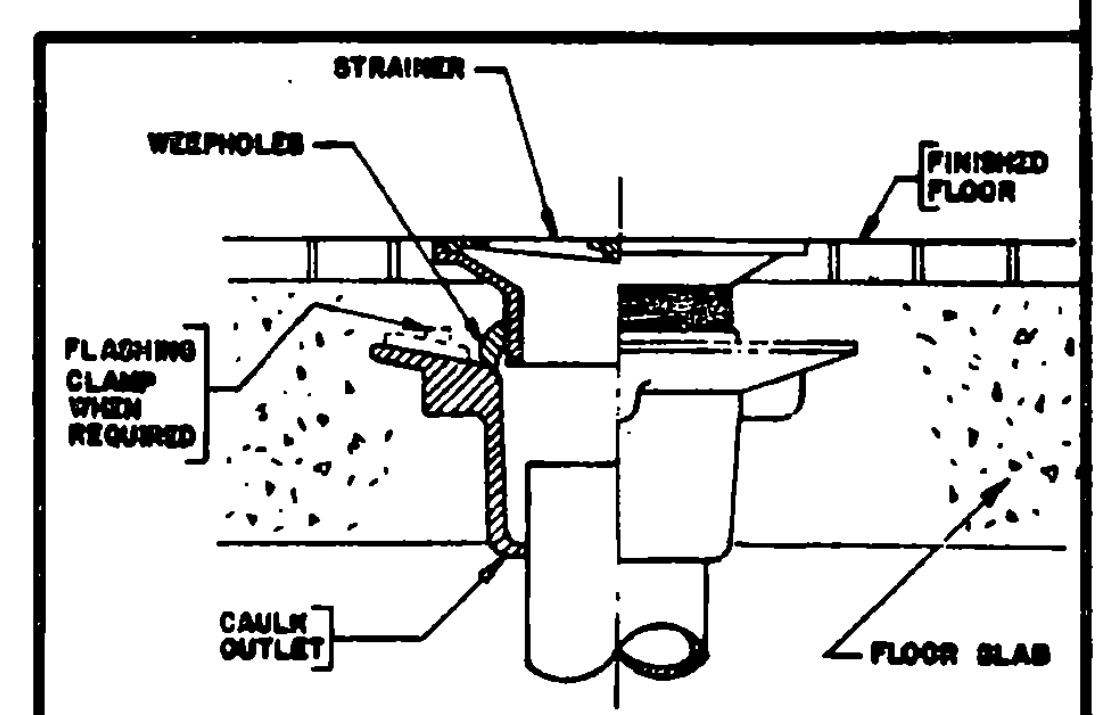
RUN 3/4" TYPE 'L' COPPER W/ 3/4" ARMORFLEX IN 5" GALVANIZED STEEL CONDUIT W/ LONG ELBOWS UNDER BUILDING. (BY PLUMBING CONTR.) RUN UP INTO MECH. ROOM & CONNECT 3/4" STEEL GAS PIPING. (SEE SPEC.) GAS SHUT OFF & DIRT LEG. TO GAS-FIRED HOT AIR FURNACE (FURNACE BY H&V CONTRACTOR)

PLUMBING FIXTURE & RUNOUT SCHEDULE

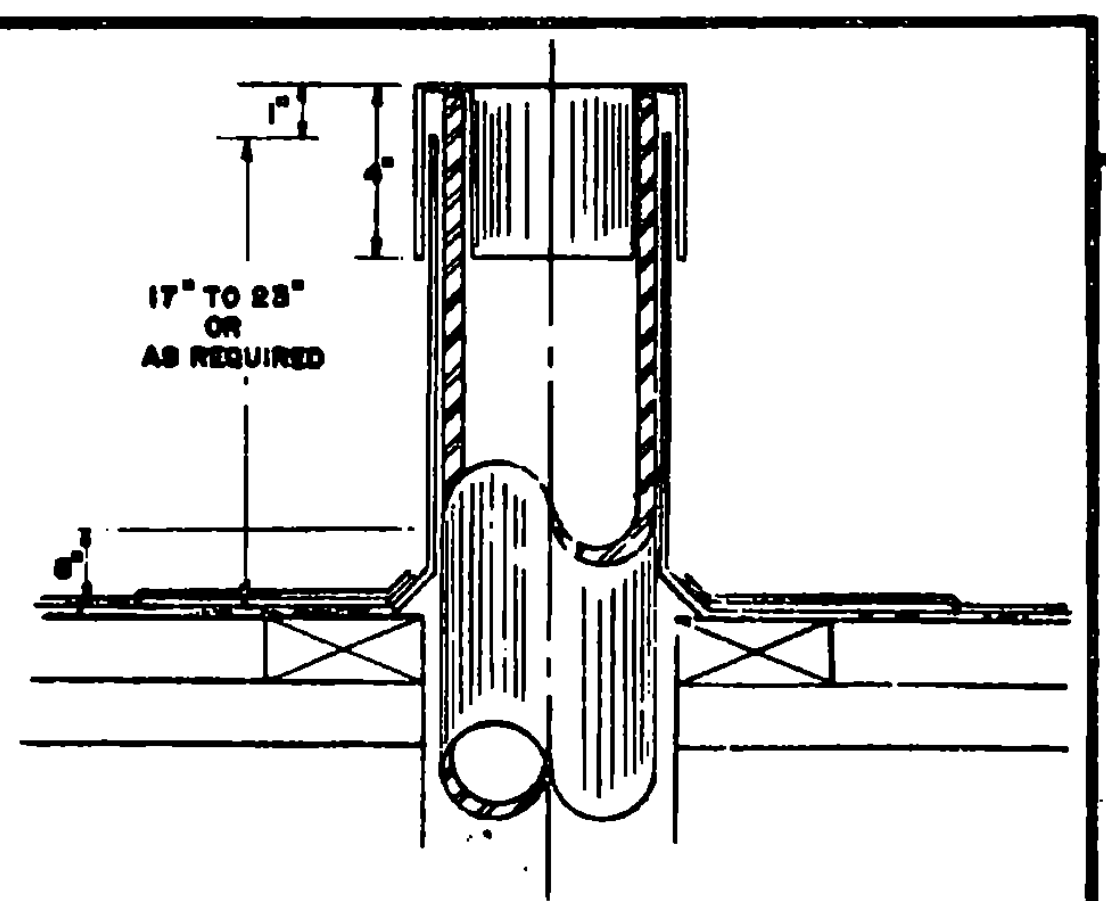
MARK	FIXTURE	DESCRIPTION	COLD WATER	HOT WATER	WASTE	VENT
P-1	P-1A	WATER CLOSET (REG. USE) WATER CLOSET (HANDI-CAP USE)	1/2"	1/2"	4"	2"
P-2	P-2A	LAVATORY (WALL HUNG) HANDI-CAP USE DRINKING FOUNTAIN (W/LOW) HANDI-CAP	1/2"	1/2"	2 1/2"	1 1/2"
P-3	P-3	URINAL (WALL HUNG) JANITOR SINK	1/2"	1/2"	3"	2"



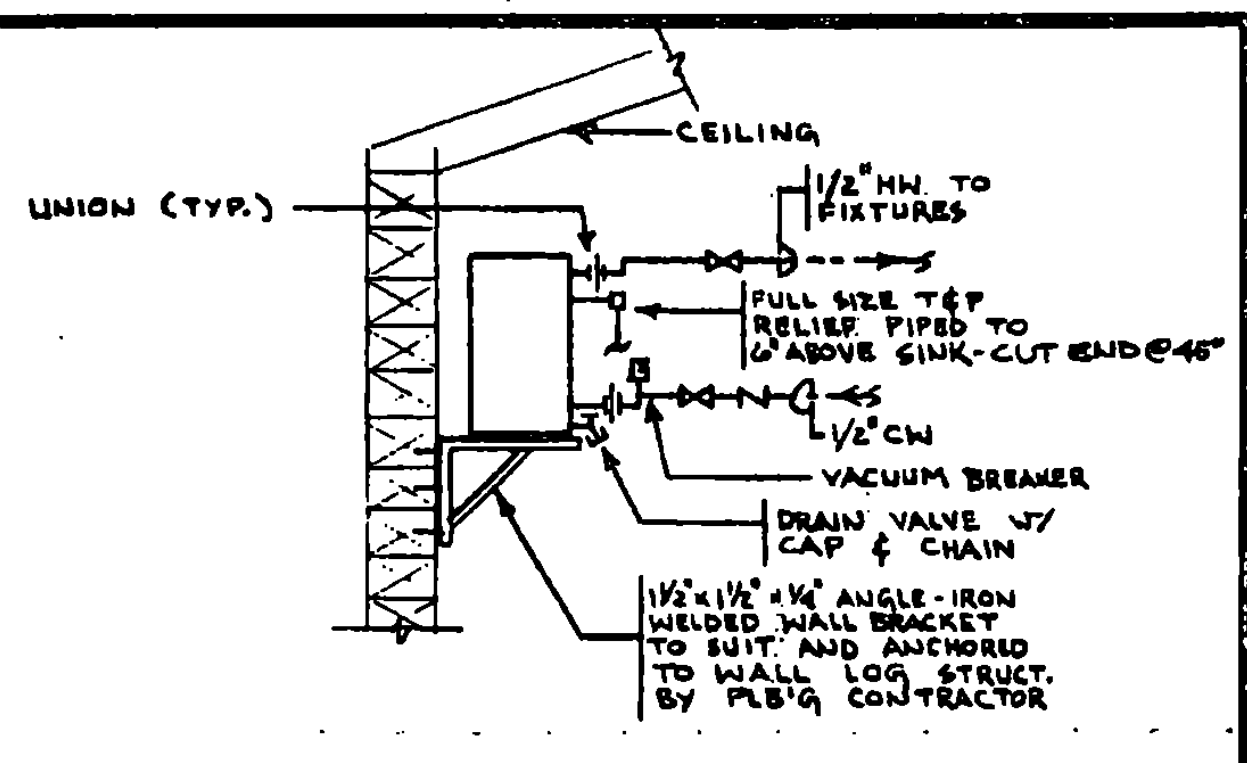
HOT & COLD WATER RISER DIAGRAM
NOT TO SCALE



FLOOR DRAIN DETAIL
NOT TO SCALE



ROOF VENT DETAIL
NOT TO SCALE



DOMESTIC HOT WATER HEATER DETAIL
NOT TO SCALE

STATE OF VERMONT
DEPARTMENT OF STATE BUILDINGS
AGENCY OF ADMINISTRATION
MONTPELIER, VERMONT

ALBURG WELCOME CENTER
ALBURG
PLUMBING - PARTIAL FLOOR PLAN,
DETAILS, SCHEDULES, DIAGRAMS & LEGENDS

DATE: 3-19-76
SCALE: AS NOTED
REVISIONS: 4-14-76
DWG. NO.: P-1
11 of 21

DRAWN BY: GN, KA
PROJECT NO.: NH 028-1075