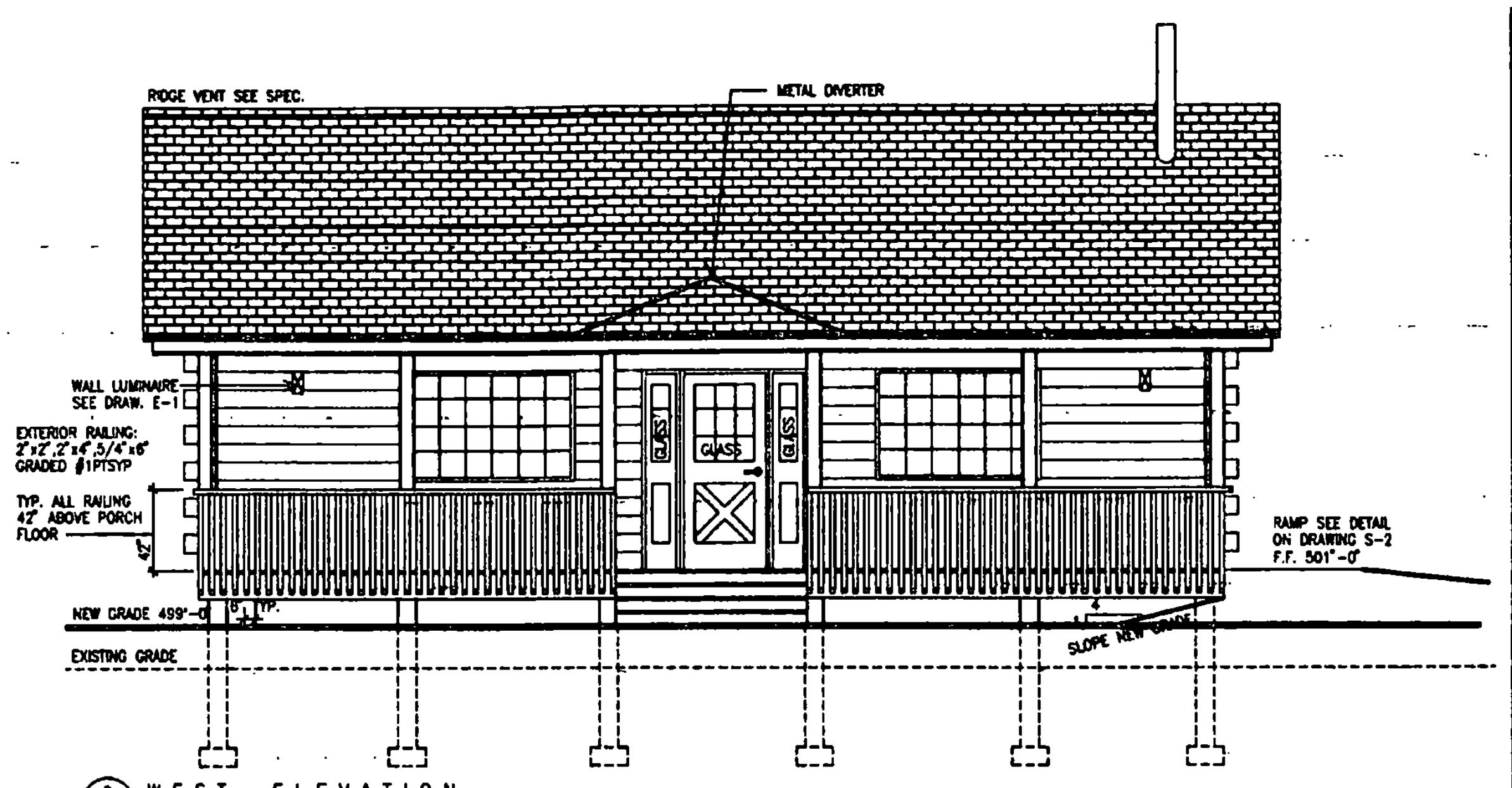
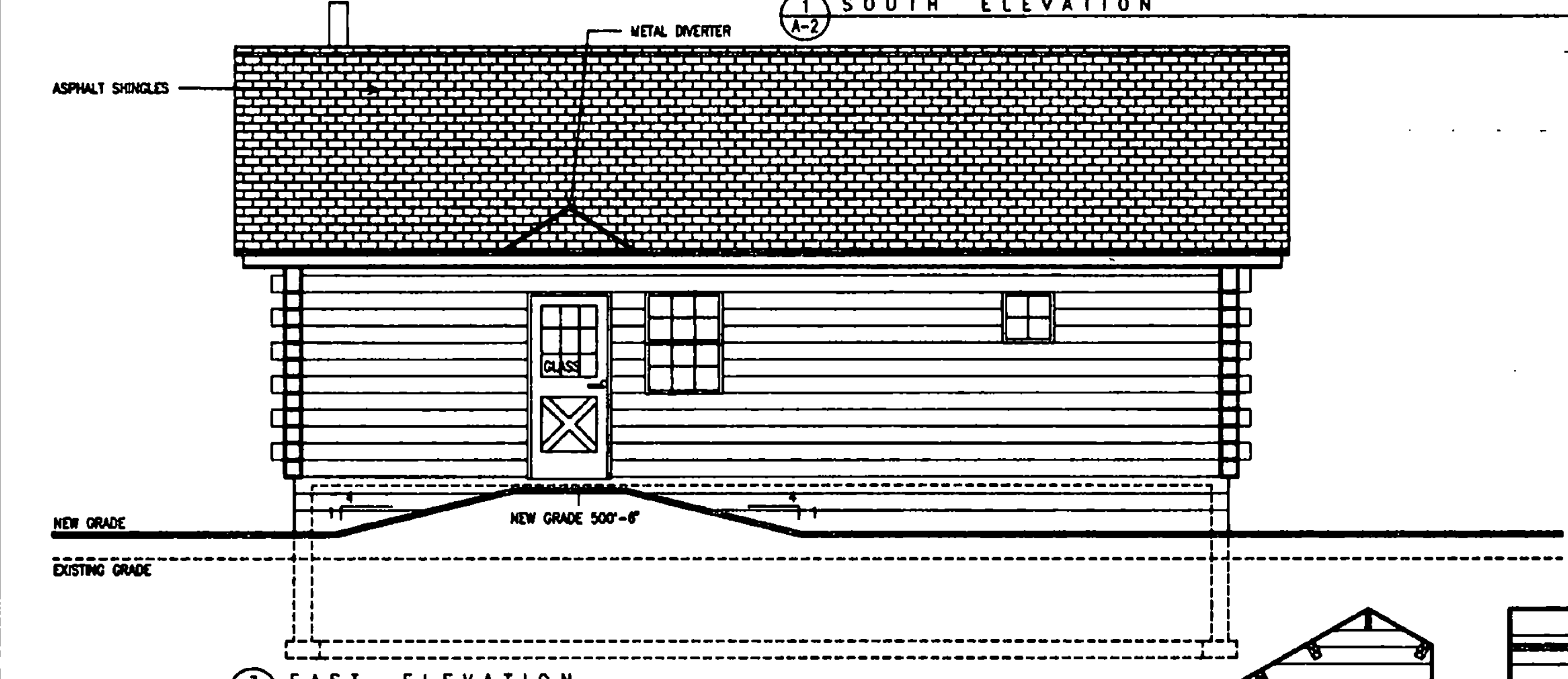


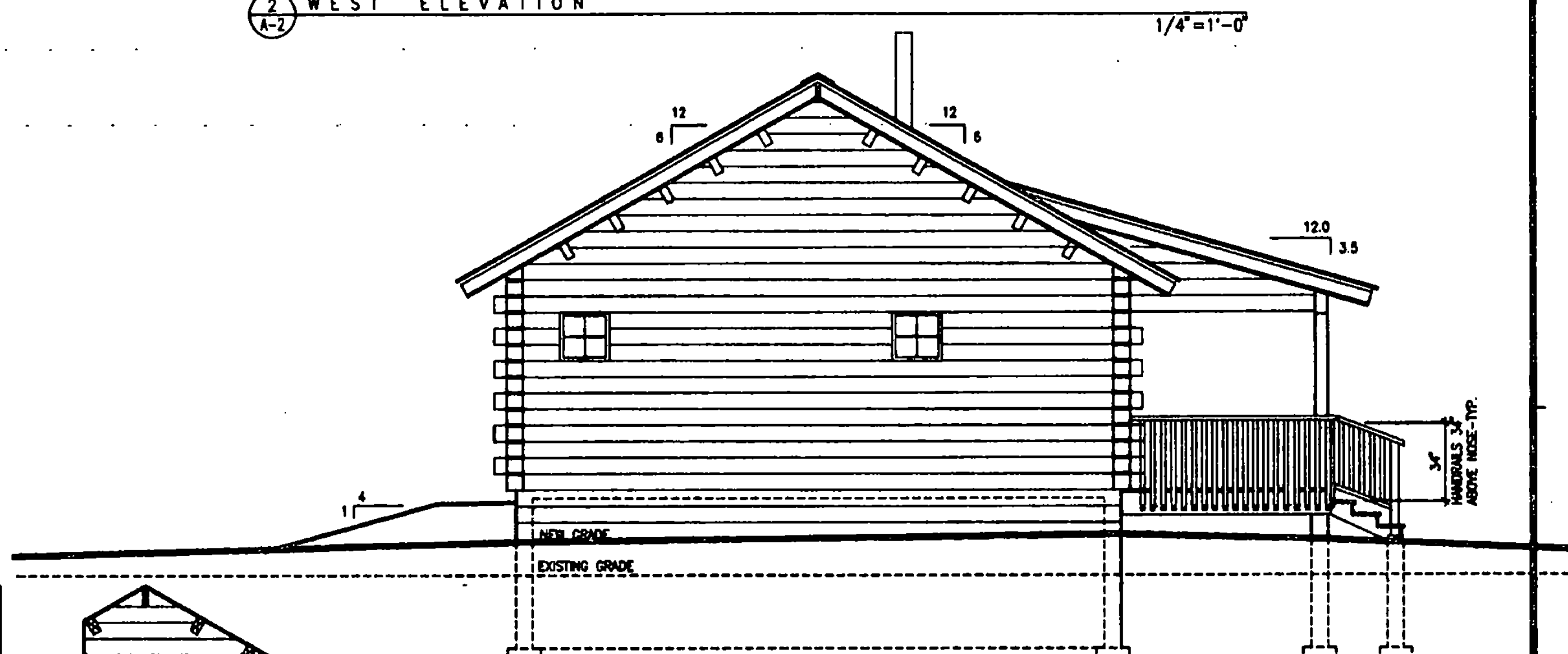
1 SOUTH ELEVATION  
1/4"=1'-0"



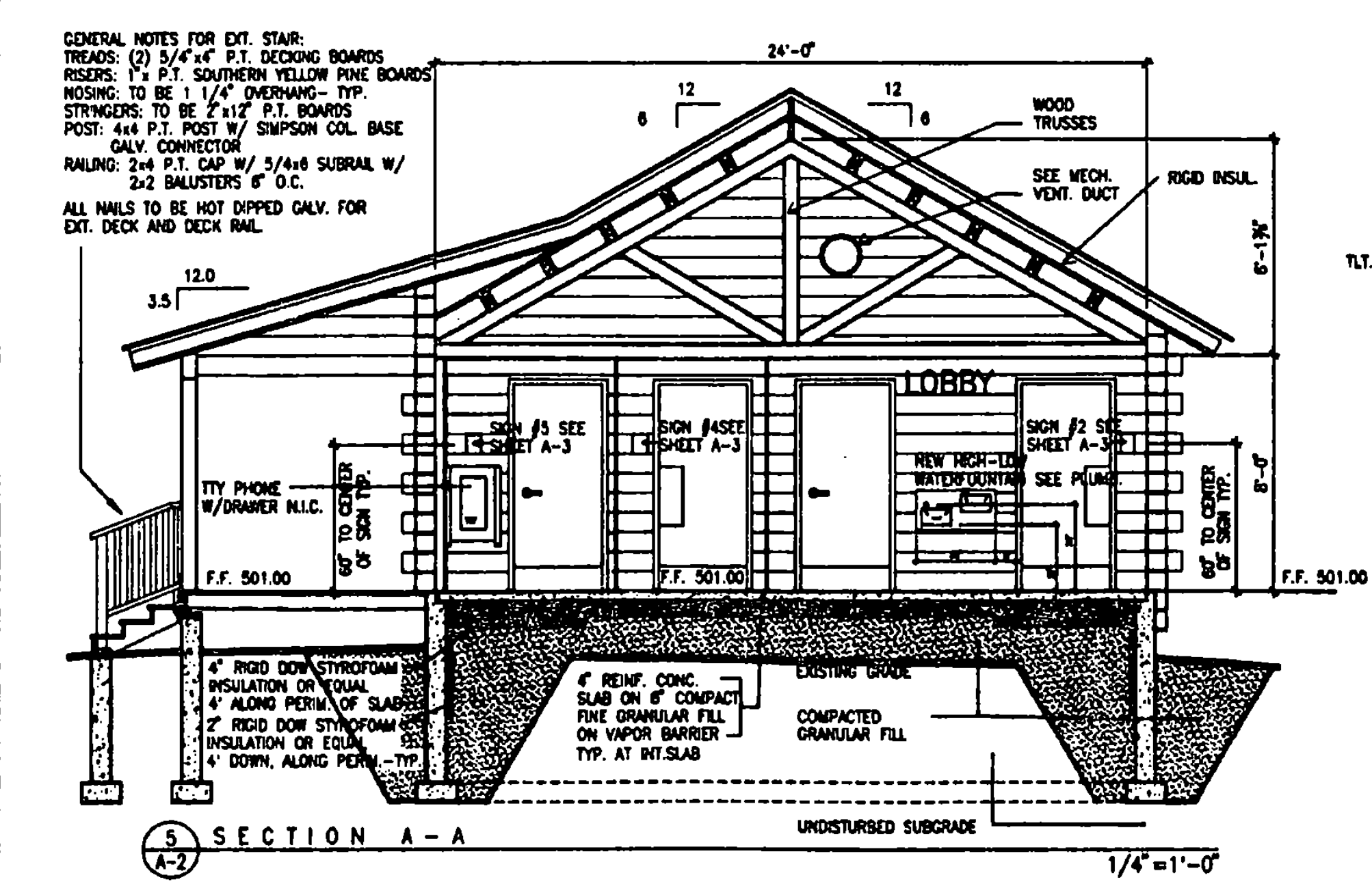
2 WEST ELEVATION  
1/4"=1'-0"



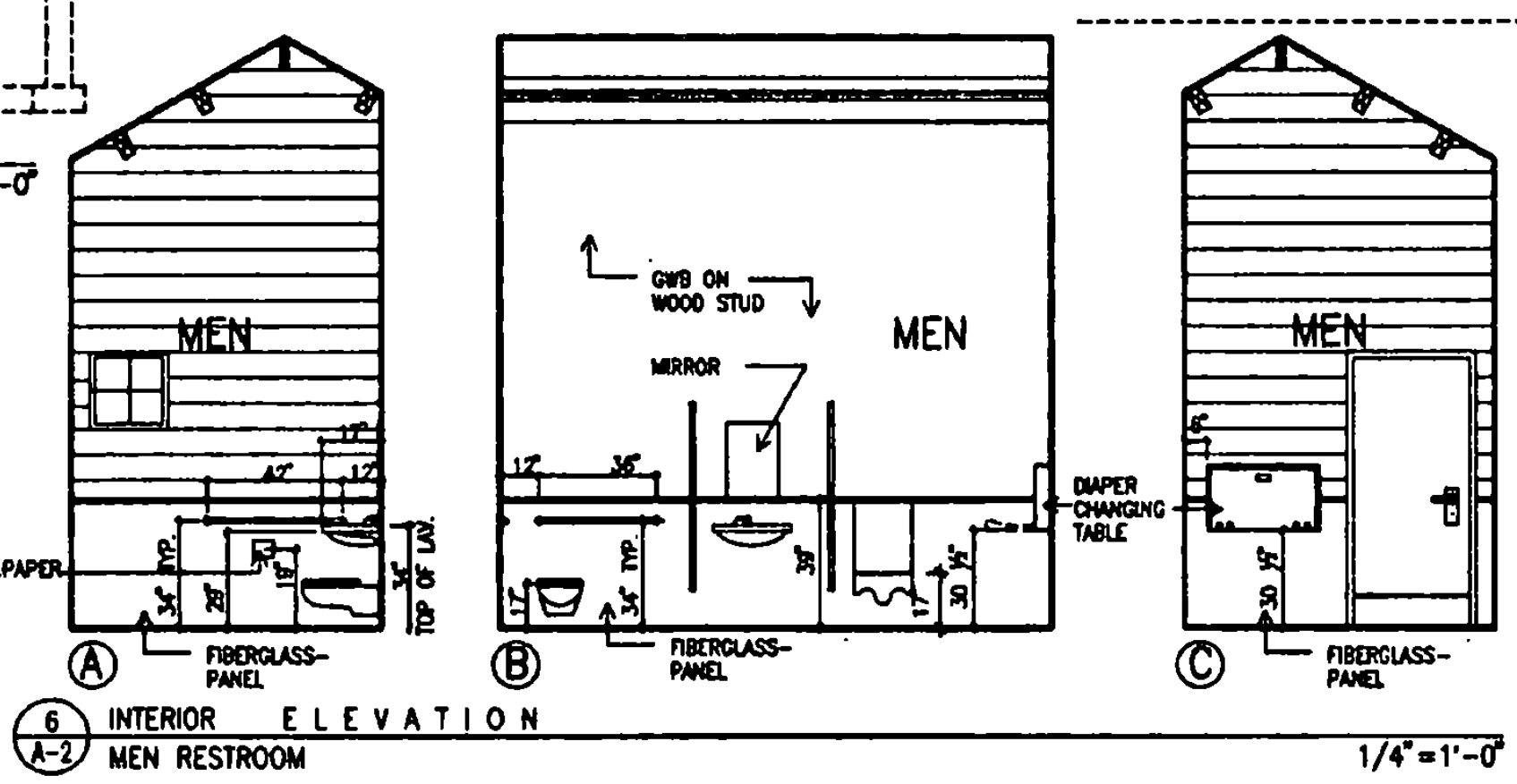
3 EAST ELEVATION  
1/4"=1'-0"



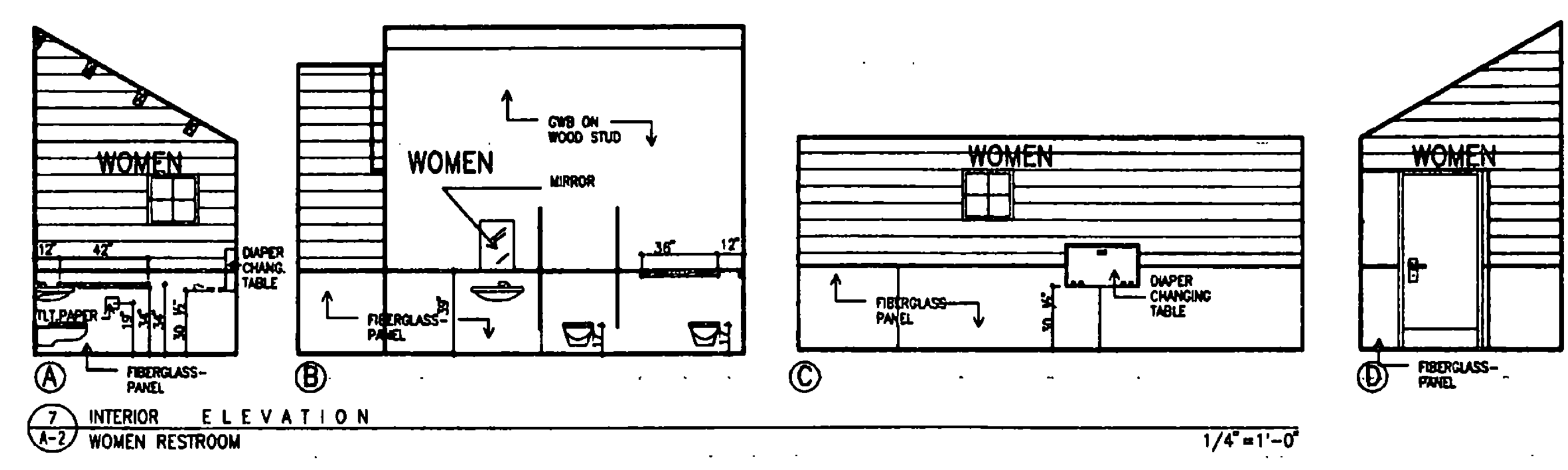
4 NORTH ELEVATION  
1/4"=1'-0"



5 SECTION A-A  
1/4"=1'-0"



6 INTERIOR ELEVATION  
MEN RESTROOM  
1/4"=1'-0"



7 INTERIOR ELEVATION  
WOMEN RESTROOM  
1/4"=1'-0"

GENERAL NOTES FOR EXT. STAIR:  
TREADS: (2) 5/8" P.T. DECKING BOARDS  
RISERS: 1" P.T. SOUTHERN YELLOW PINE BOARDS  
NOSING: TO BE 1 1/4" OVERHANG - TYP.  
STRINGERS: TO BE 2"x12" P.T. BOARDS  
POST: 4x4 P.T. POST W/ SIMPSON COL. BASE GALV. CONNECTOR  
RAILING: 2x4 P.T. CAP W/ 5/8x8 SUBRAL W/ 2x2 BALUSTERS 6" O.C.  
ALL WALLS TO BE HOT DIPPED GALV. FOR EXT. DECK AND DECK RAIL

STATE OF VERMONT DEPARTMENT OF STATE BUILDINGS AGENCY OF ADMINISTRATION MONTPELIER, VERMONT			
ALBURG WELCOME CENTER ALBURG INTERIOR ELEVATIONS EXTERIOR			
DATE: MARCH 18, 1988	SCALE: 1/4"=1'-0"	REVISIONS: 5-16-76	DRAWING NO.: A-2
DRAWN BY: BLJ	PROJECT NO.: NH028-1075		SHEET 8 OF 21
APPROVED BY: JBA			