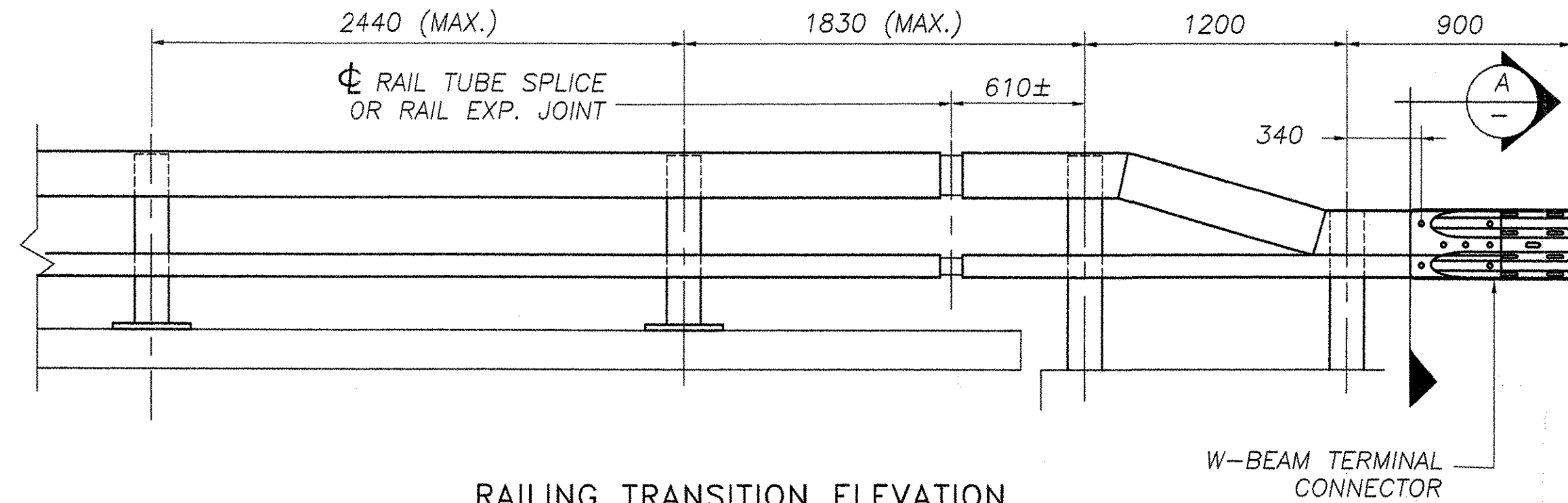
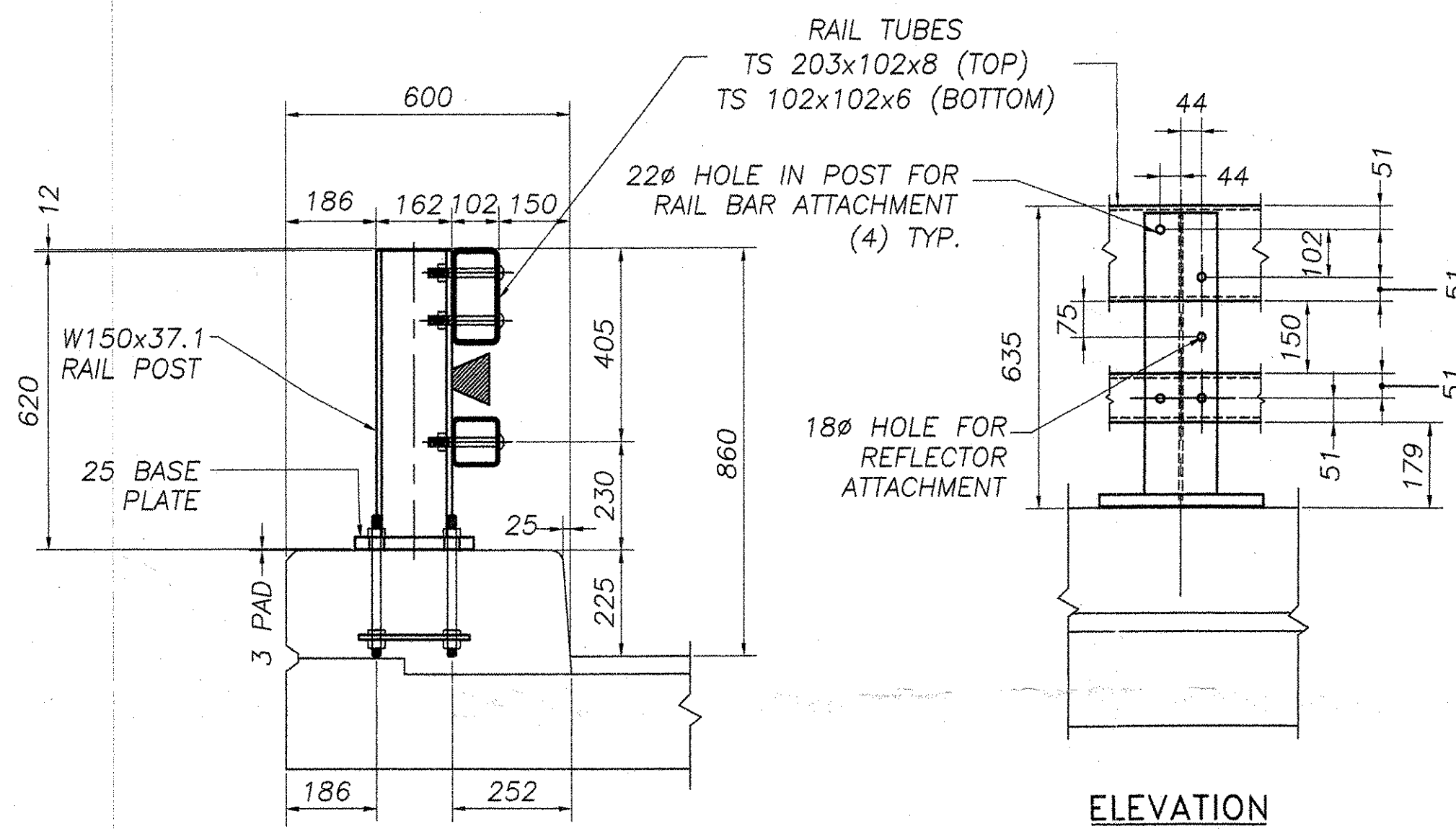


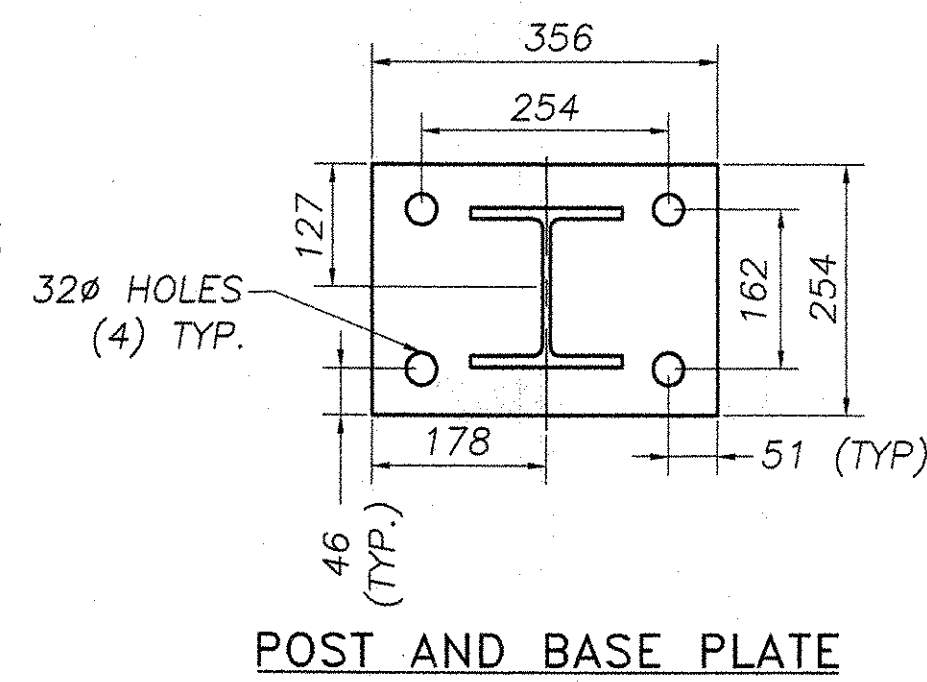
BRIDGE RAILING ELEVATION



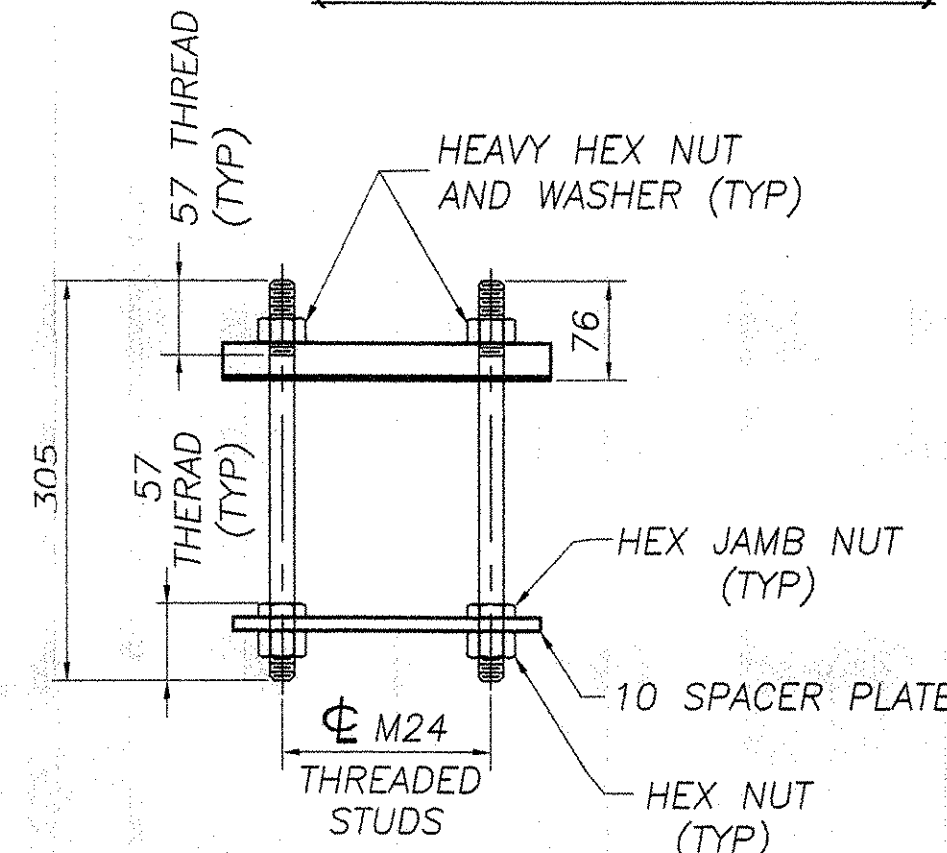
RAILING TRANSITION ELEVATION (BOTH ENDS OF BRIDGE)



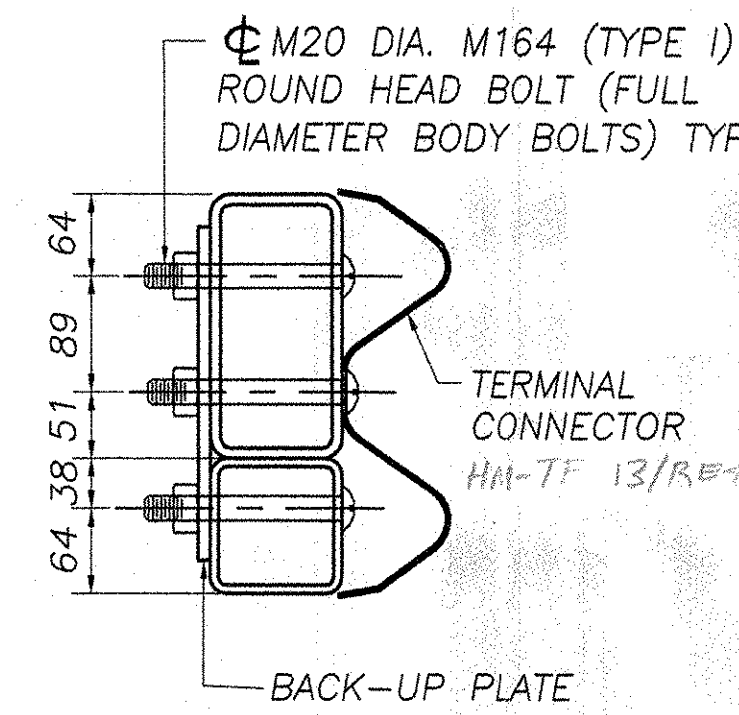
TYPICAL SECTION



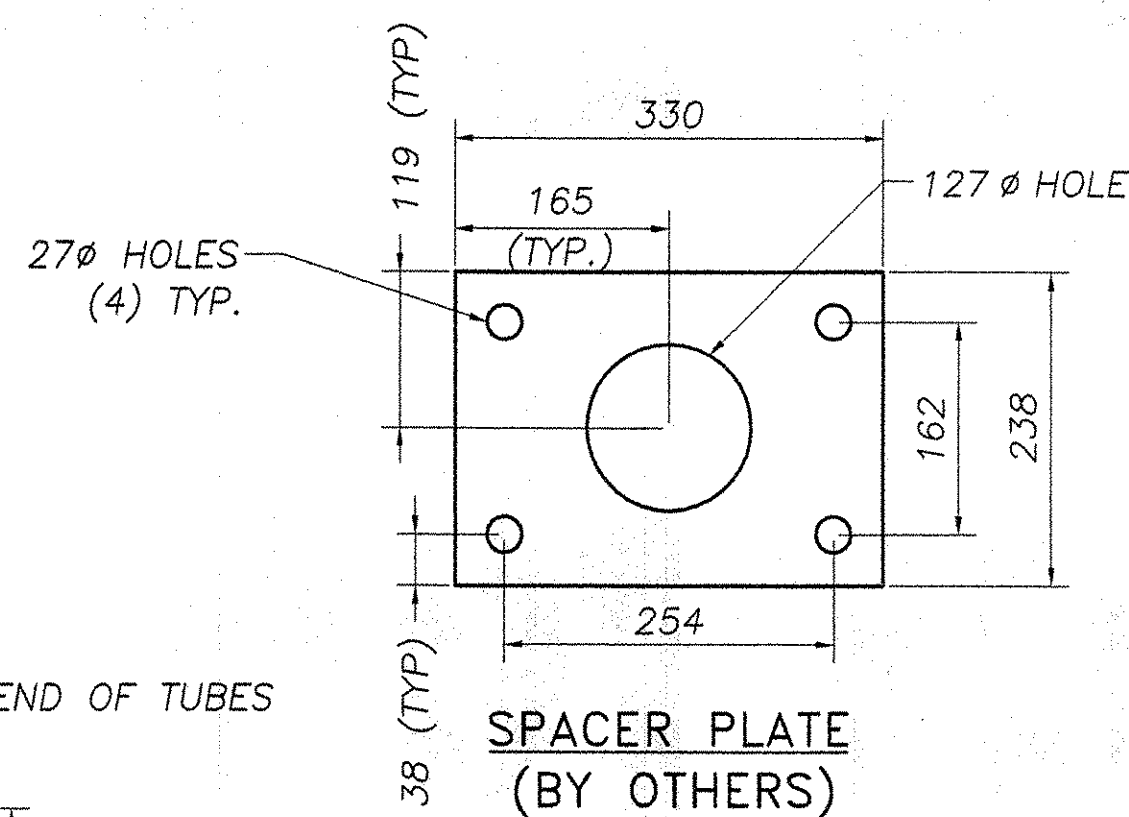
POST AND BASE PLATE



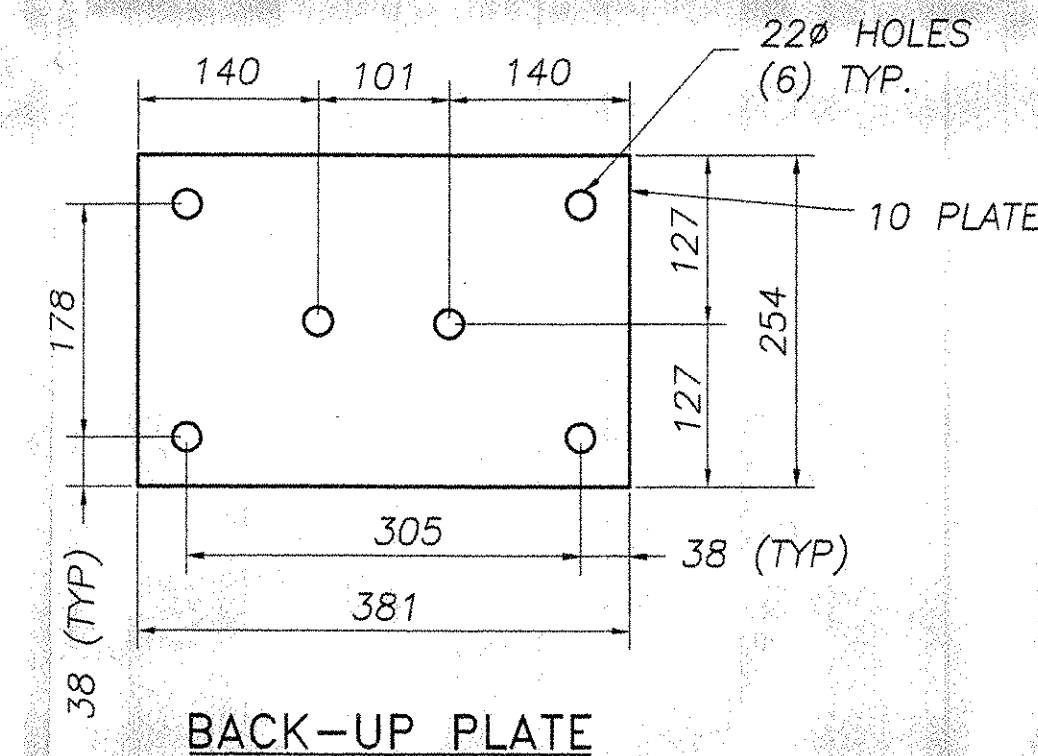
RAIL POST ANCHORAGE (BY OTHERS)



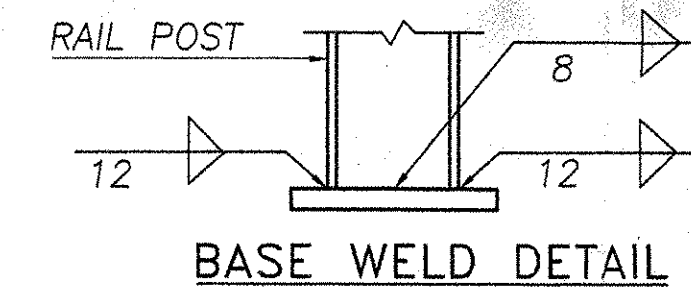
SECTION



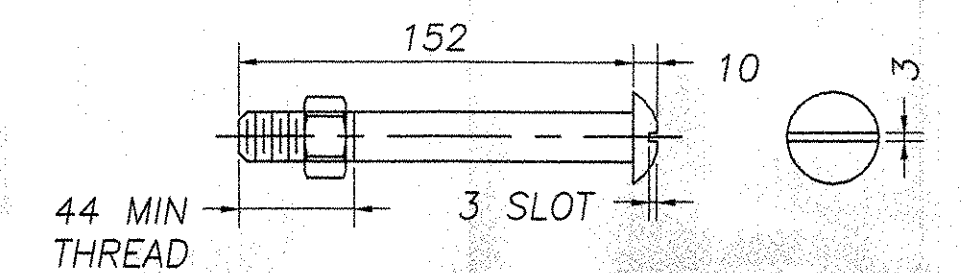
SPACER PLATE (BY OTHERS)



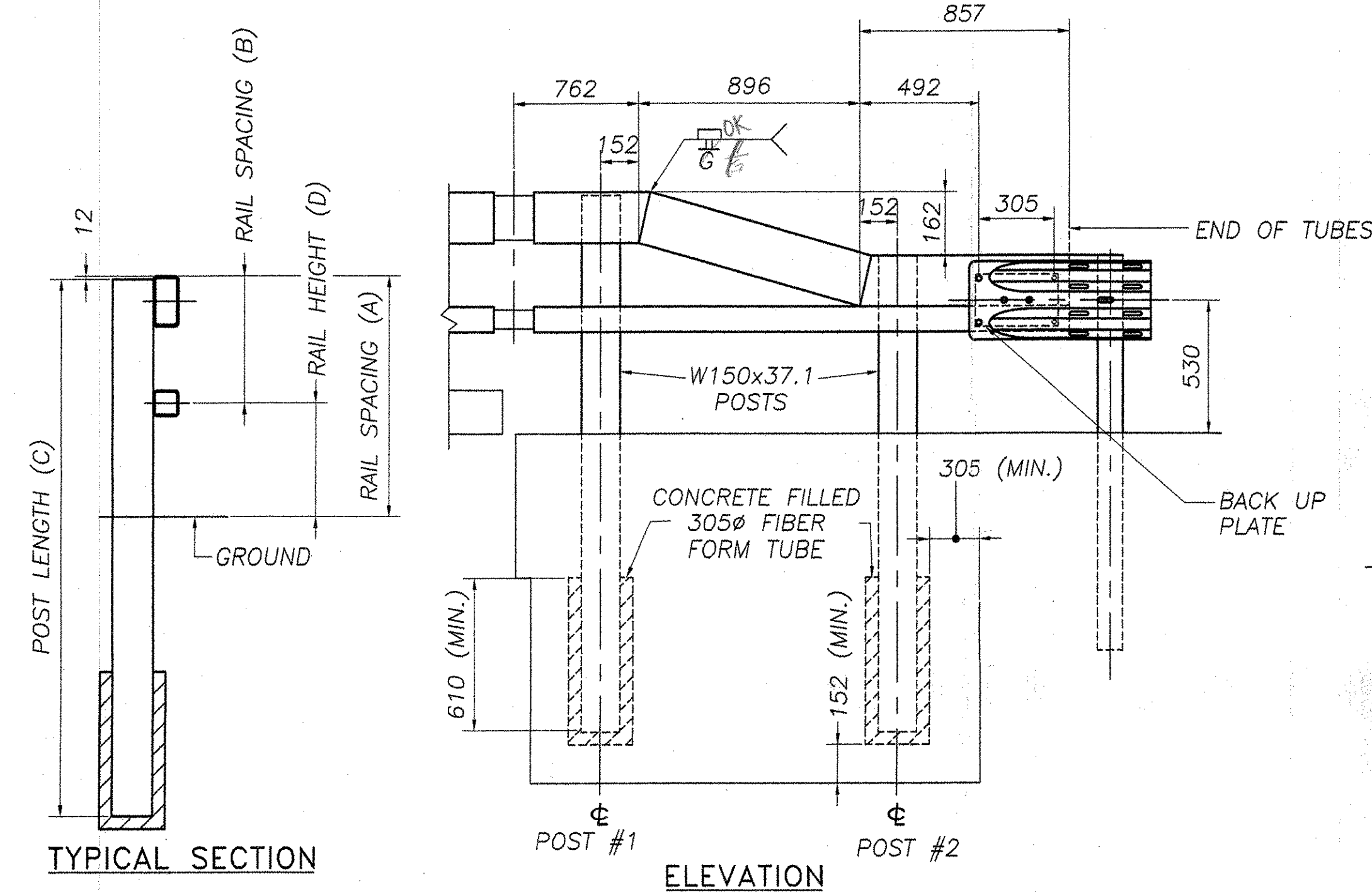
BACK-UP PLATE



BASE WELD DETAIL

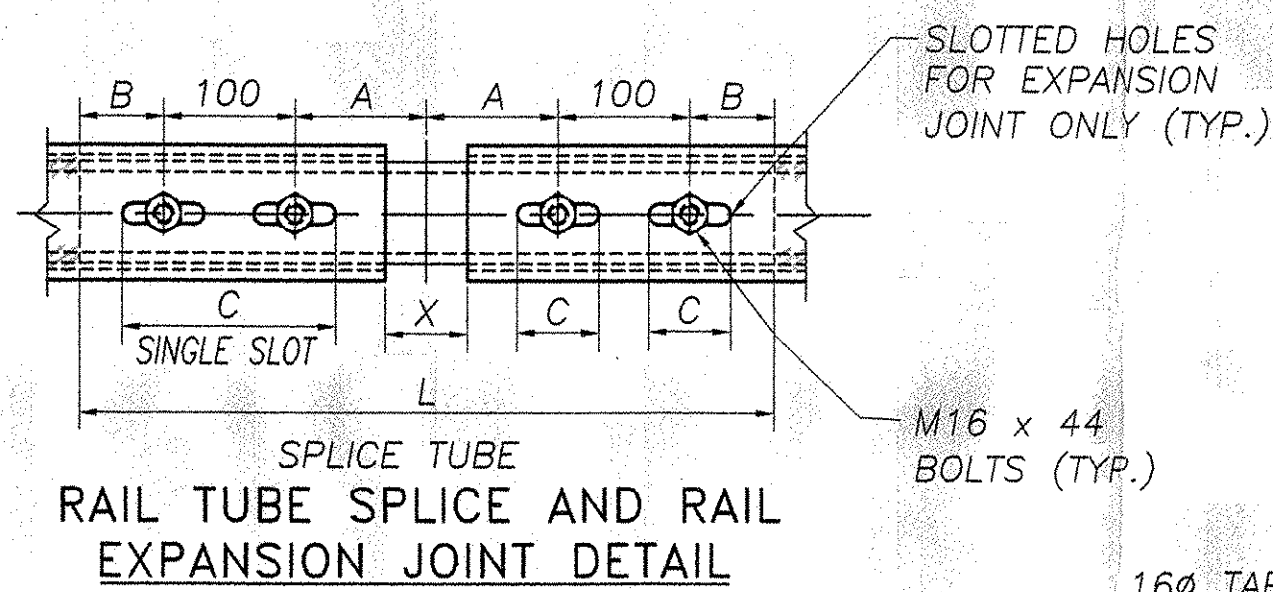


M20 DIA. M164M (TYPE 1) ROUND HEAD BOLT (WITH WASHER AND PREVAILING TORQUE TYPE LOCK NUT) (SEE NOTE #9) ONLY FULL DIAMETER BODY BOLTS WILL BE ALLOWED.



TYPICAL SECTION

ELEVATION

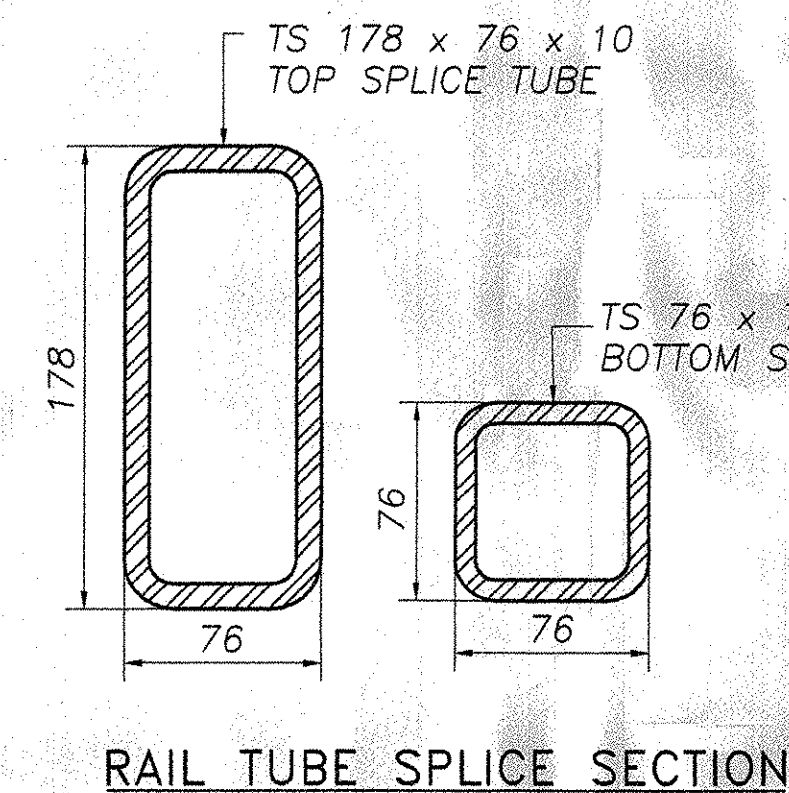


RAIL TUBE SPLICE AND RAIL EXPANSION JOINT DETAIL

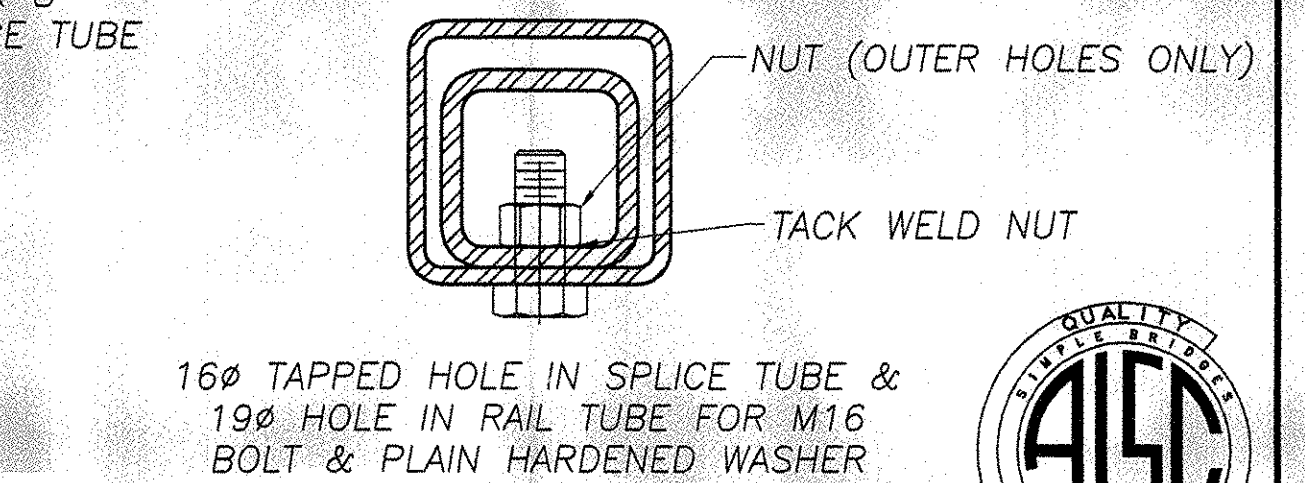


EXPANSION JOINT SECTION

FOR DETAILS NOT SHOWN, SEE "RAIL TUBE SPLICE SECTION."



RAIL TUBE SPLICE SECTION



16Ø TAPPED HOLE IN SPLICE TUBE & 19Ø HOLE IN RAIL TUBE FOR M16 BOLT & PLAIN HARDENED WASHER



POST NUMBER	RAIL HEIGHT (A)	RAIL SPACING (B)	POST LENGTH (C)	RAIL HEIGHT (D)
1	860	405	2134	455
2	702	254	1956	448

SPLICE TABLE					
T	A	B	C	L	X
N/A	100	50	--	510	20

EXPANSION JOINT TABLE					
T	A	B	C	L	X
<100	100	50	65	510	65

T = TOTAL MOVEMENT BETWEEN BRIDGE EXPANSION JOINTS. SEE NOTE 6

* = SINGLE SLOT

REVISIONS		
No.	Remarks	Date
0	Initial submittal	8-25-06

RECEIVED
 CK'D BY WOL OK'D BY DRP
 SEP 07 2006 AS
 RESUBMIT APPROVED NEDC
 BY RSW DATE 9-14-06

HIGHWAY SAFETY CORP.
 GLASTONBURY, CT

ITEM 525.33 - BRIDGE RAILING-NETC 2 RAIL
 PROJECT No. brf 0269(10)
 TOWN OF LYNDON Br. No. 2
 CALEDONIA COUNTY, ROUTE NO. VT 114

GENERAL CONTRACTOR
 SUB CONTRACTOR RSW BR
 F.R. LAFAYETTE, INC.

DRAWN: MHM
 CHECKED: [Signature]
 DATE: 8/21/06
 SCALE: NONE
 HSC REFERENCE NO.: 1571
 SIZE: D REVISION: 0
 SHEET NO.: 2 of 2