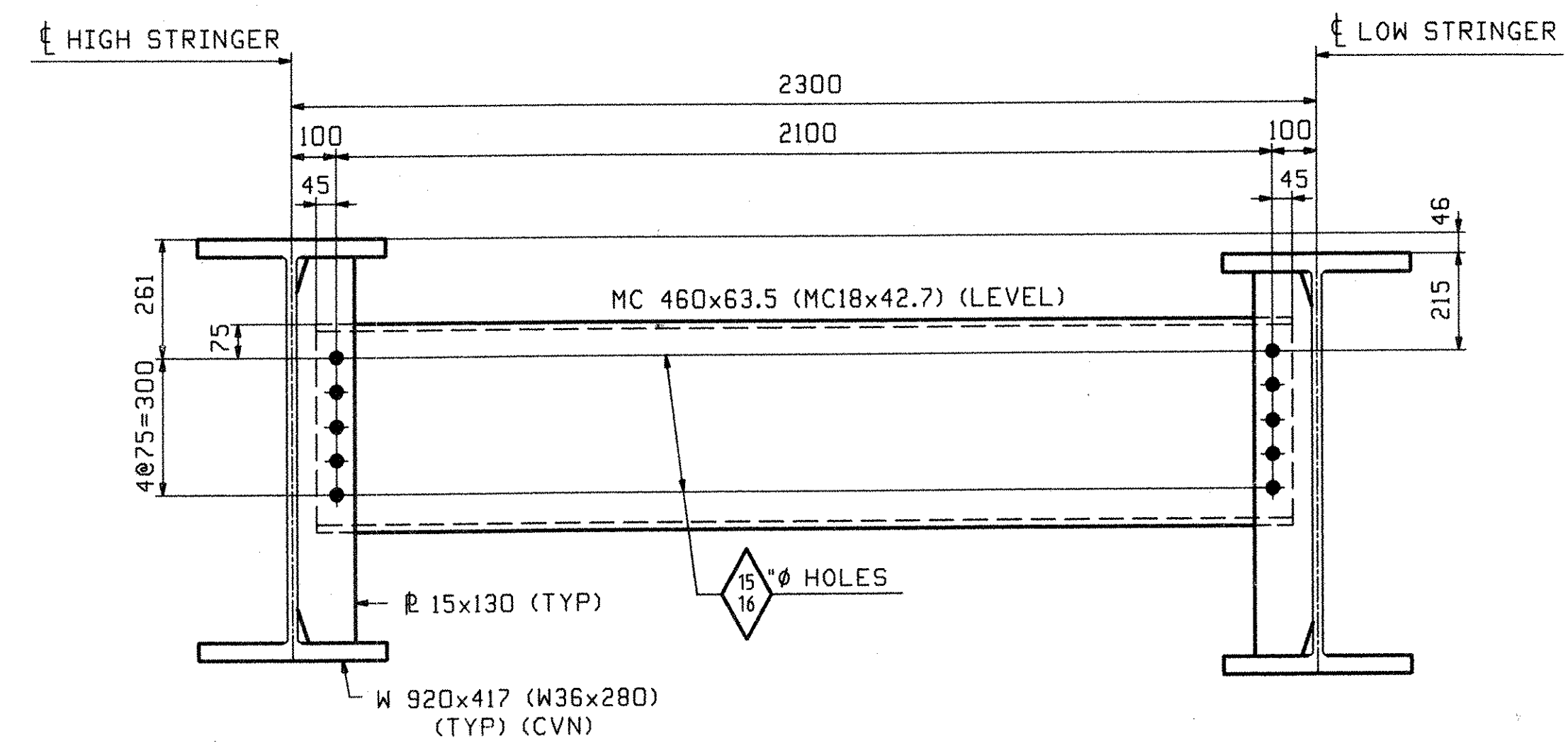
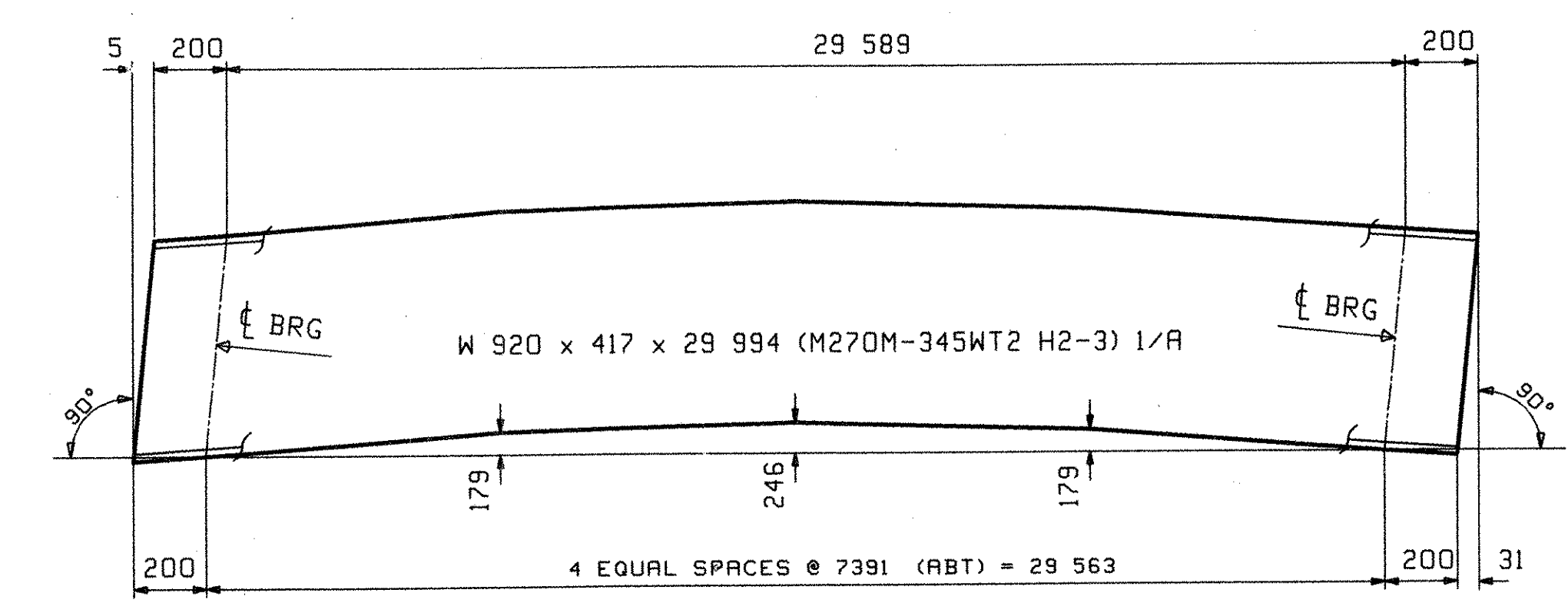


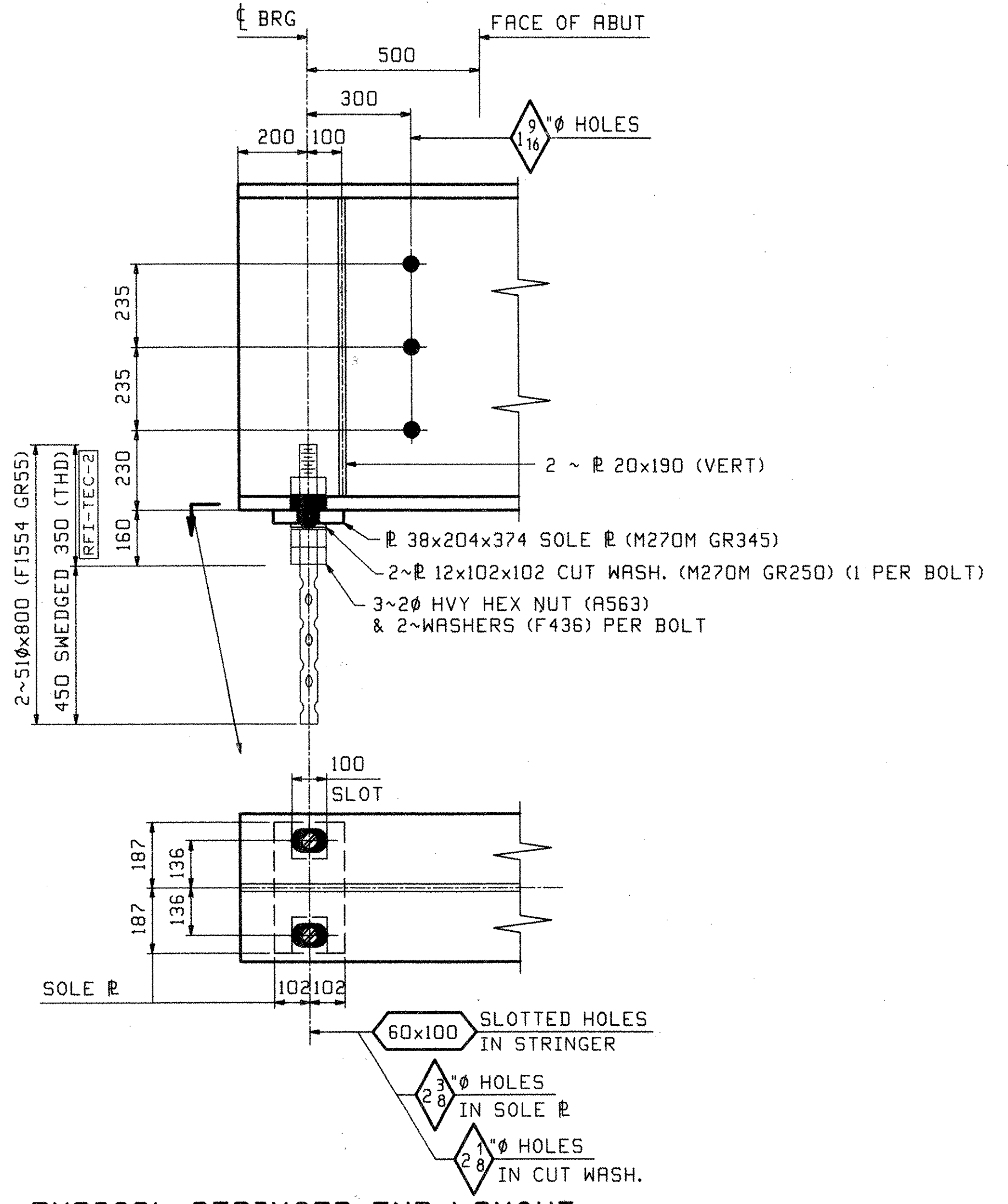
FRAMING PLAN



TYPICAL DIAPHRAGM LAYOUT
(LOOKING DOWNSTATION)



CAMBER DIAGRAM FOR 1S1, 2S2, 2S3, 2S4 AND 3S5



TYPICAL STRINGER END LAYOUT

- NOTES**
1. LONGITUDINAL DIMENSIONS ARE SLOPING ALONG BOTT OF STRINGER WITH CORRECTIONS MADE FOR VERTICAL CURVE, GRADE & DL CAMBER (UN).
 2. TRANSVERSE DIMENSIONS ARE IN A HORIZ. PLANE (UN).
 3. DROP ARROW POINTS TOWARDS LOW END OF MEMBER.
 4. ENDS OF GIRDERS AND BRG. STIFF'S ARE VERTICAL AFTER DL ROTATION.
 5. DIAPH. CONN. STIFF ARE NORMAL TO GRADE.
 6. BOTT PT NUMBERS = TOP PT NUMBERS + 100.
 7. DIAPH DROPS ARE CALCULATED IN THEIR FINAL POSITION.

OUT FOR APPROVAL	9/2/06											
OUT FOR APPROVAL												
ISSUED TO SHOP												
FIELD & OFFICE												
REV.	REMARKS	DATE	DWN	CHK	APP	Q.A.	NO.	DIA.	LGT	TYPE	WASHER	
MATERIAL:	ELECTRODES:	HOLES:									SHOP BOLTS:	
SURFACE PREP. & PAINT:												
DESCRIPTION:	CALCULATION PLAN					DRAWN BY	DATE					
JOB:	VT 114 OVER PASSUMPSIC RIVER, BRIDGE 2					SOB	06/12					
	TOWN OF LYNDON, COUNTY OF CALEDONIA, VT					CHKD BY						
	STATE OF VERMONT AGENCY OF TRANS.					RLA	06/15/06					
	ENGR: VANASSE HANGEN BRUSTLIN, INC.					APPROV BY						
						SUPERVISOR	W. J. GATTI					
PROJ NO.	BRF 0269(10)					O.A.						
CUSTOMER:	WINTERSET, INC.											
CASCO BAY STEEL STRUCTURES, INC.						JOB NO.	DRG. NO.					
75 SPRING HILL ROAD						297	WS1					
PHONE (207) 282-7360						SACO, MAINE 04072						
						FAX. (207) 282-1179						

VT TRANS RECEIVED
 OK'D BY JWP OK'D BY G. Roy
 AUG 15 2006
 RESUBMIT APPROVED X
 BY DATE 8/21/06

06/15/06 10:00 AM EDT 2006 C:\users\jhp\appdata\local\temp\111111.dwg