

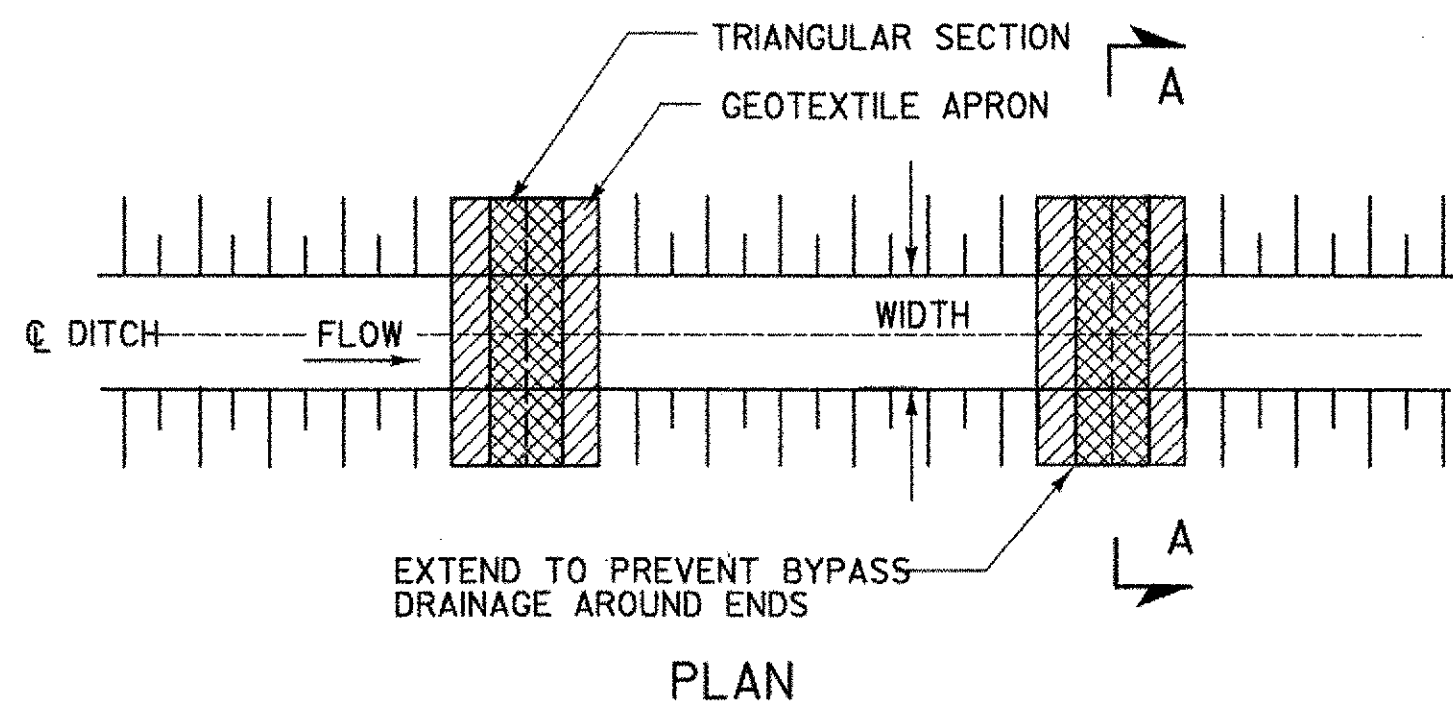
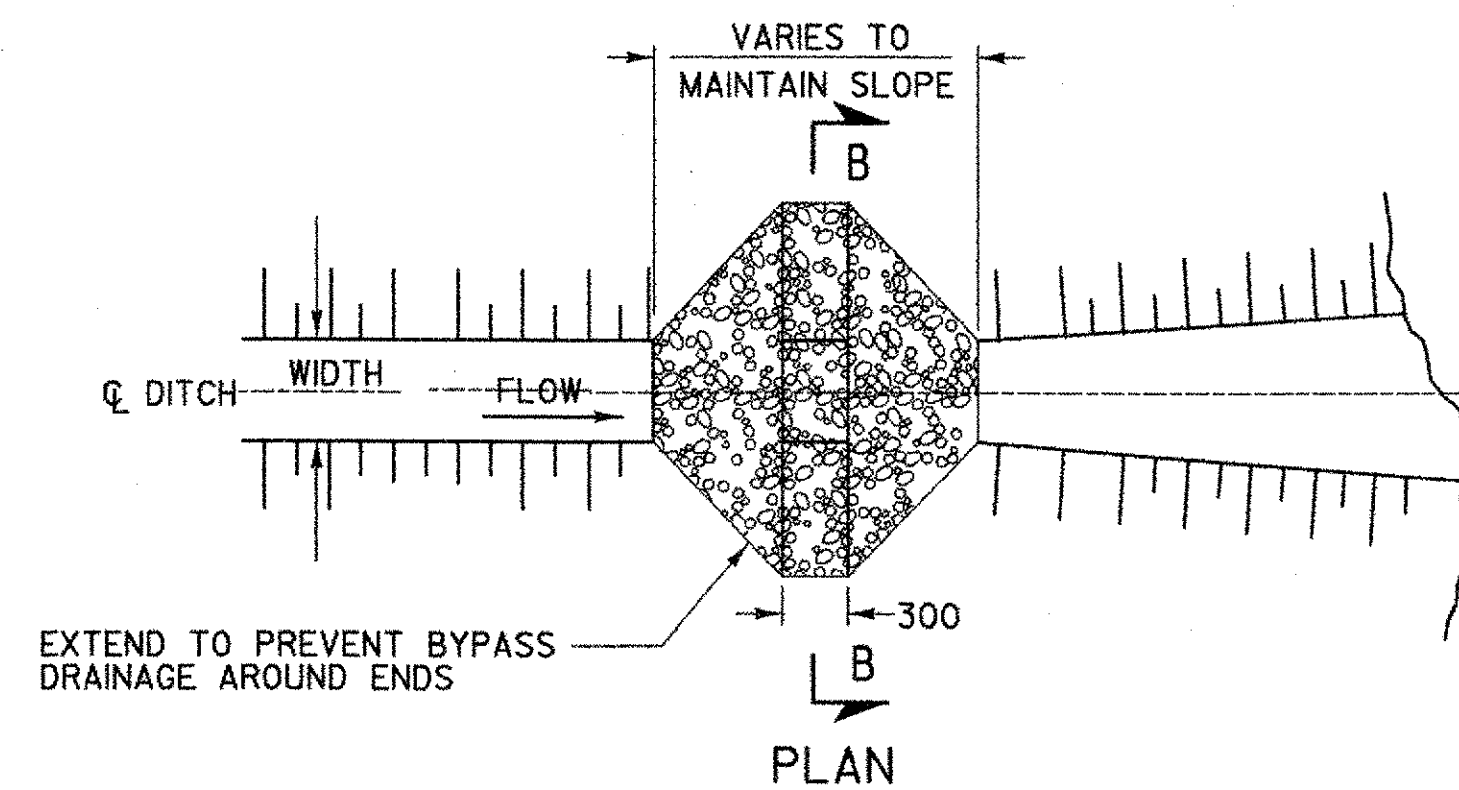
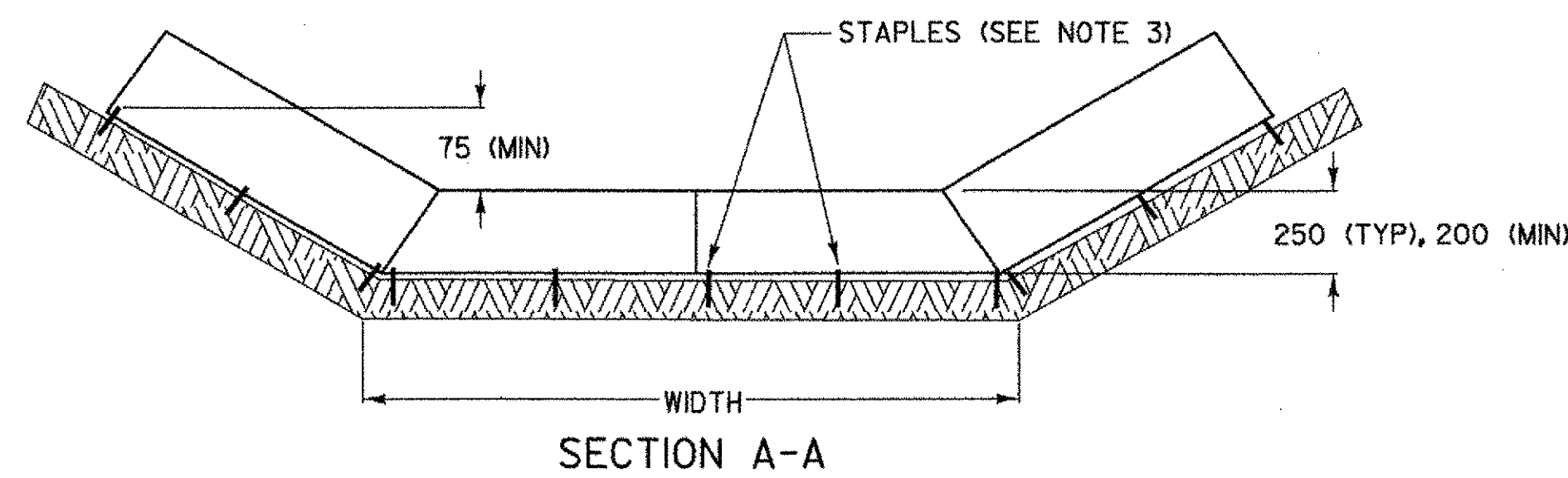
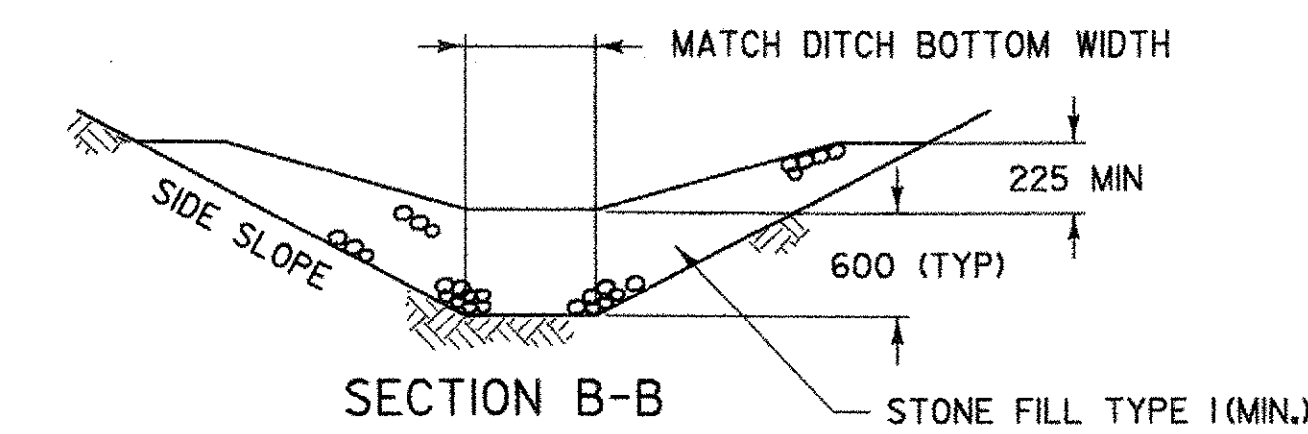
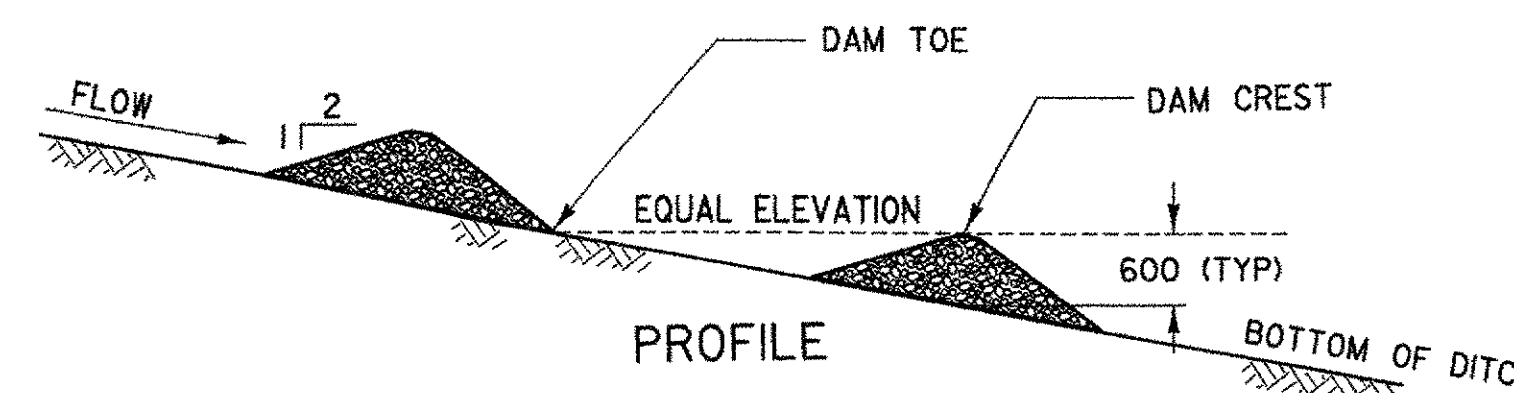
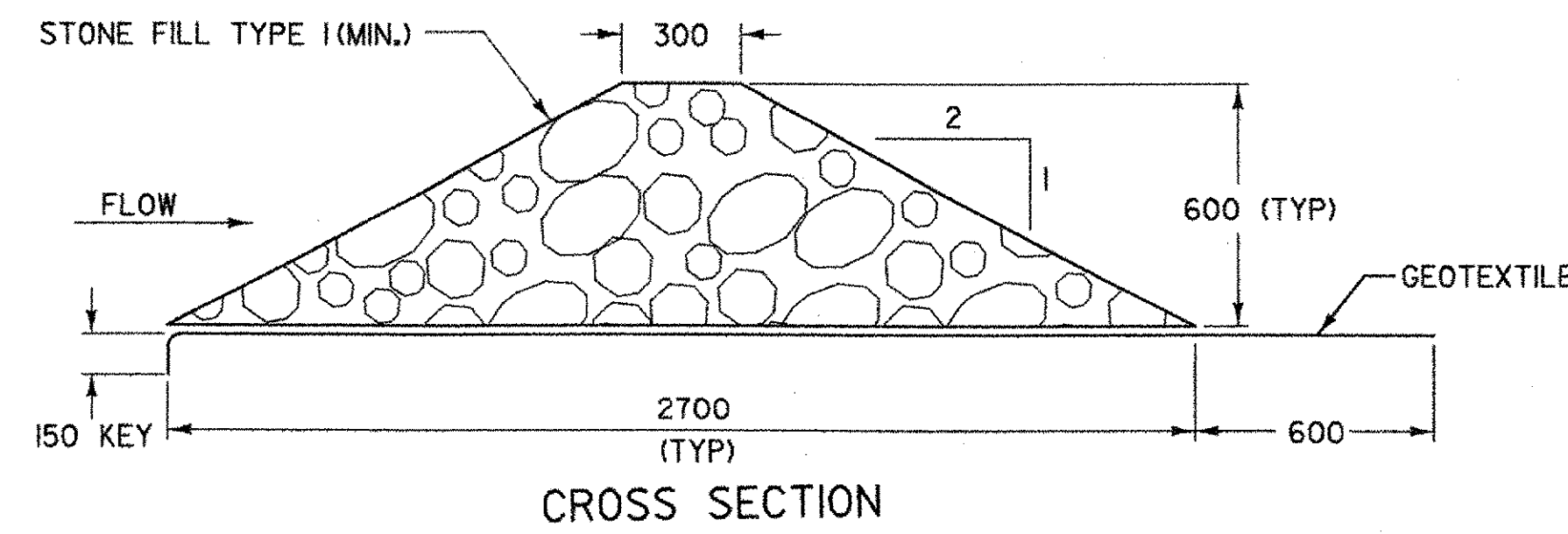
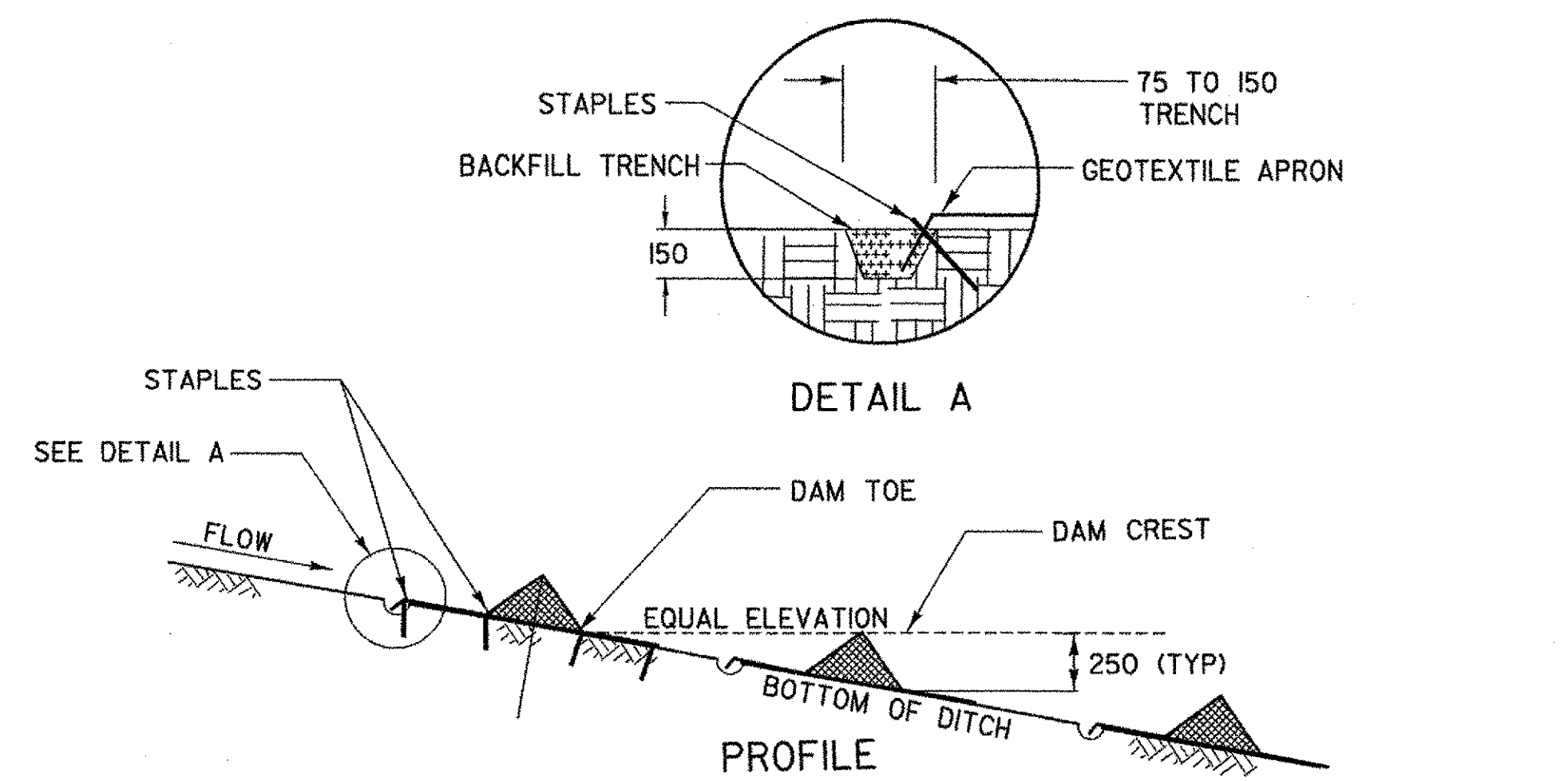
CHECK DAMS

APPLICATION NOTES:

- THE PRIMARY PURPOSE OF A CHECK DAM IS TO REDUCE EROSION IN A CHANNEL BY REDUCING FLOW VELOCITY.
- CHECK DAMS WILL CAPTURE SEDIMENT THAT FALLS OUT OF SUSPENSION BEHIND THE CHECK DAM DUE TO DECREASED VELOCITY.
- CHECK DAMS ARE NOT INTENDED TO FILTER SEDIMENT FROM TURBID WATER.
- DETAILS SHOWN SHALL BE USED FOR TEMPORARY INSTALLATION ONLY.
- PREFABRICATED DAMS ARE NOT TO BE USED ON SLOPES GREATER THAN 5% OR PER MANUFACTURER'S SPECIFICATIONS.
- PREFABRICATED DAM SPECIFICATIONS SHALL BE PROVIDED TO THE ENGINEER FOR APPROVAL PRIOR TO USE.

GENERAL NOTES:

- GEOTEXTILE SHALL BE INSTALLED UNDER STONE FILL. IT SHALL BE KEYED IN ON THE UP HILL END AND SHALL EXTEND 0.6 m BEYOND THE STONE ON THE DOWN HILL END.
- CORE MATERIAL FOR THE STONE CHECK DAM SHALL MEET THE GRADATION REQUIREMENTS OF STONE FILL TYPE I (MIN.). STONE SIZE SHOULD BE INCREASED WITH INCREASED SLOPE AND VELOCITY.
- THE UPHILL END OF THE APRON FOR THE PREFABRICATED CHECK DAM SHALL BE STAPLED AND BURIED AS SHOWN IN DETAIL "A" OR AS RECOMMENDED BY THE MANUFACTURER'S LITERATURE.
- MEASURES SHALL BE INSPECTED EVERY SEVEN (7) CALENDAR DAYS AND WITHIN 24 HOURS OF A STORM EVENT GREAT ENOUGH TO CAUSE WATER TO LEAVE THE CONSTRUCTION SITE.
- MEASURES SHALL BE CLEANED AND REPAIRED AS NEEDED. SEDIMENT SHALL BE REMOVED WHEN ACCUMULATION REACHES ONE-HALF OF THE MEASURE HEIGHT. SEDIMENT SHALL BE DISPOSED OF AS UNSUITABLE MATERIAL.
- AT TIME OF REMOVAL OF THE CHECK DAMS, THE DISTURBED AREA SHALL BE REPAIRED AND STABILIZED.
- PAYMENT FOR INSTALLATION AND REMOVAL OF CHECK DAMS SHALL BE MADE UNDER APPLICABLE ITEMS INCLUDED IN THE CONTRACT PLANS OR UNDER THE FIELD MAINTENANCE OF EROSION & SEDIMENT CONTROL PLAN ITEM.
- PAYMENT FOR MONITORING CHECK DAMS SHALL BE MADE UNDER THE MONITORING EROSION & SEDIMENT CONTROL PLAN ITEM.
- PAYMENT FOR MAINTAINING CHECK DAMS SHALL BE MADE UNDER THE FIELD MAINTENANCE OF EROSION & SEDIMENT CONTROL PLAN ITEM, UNLESS MAINTENANCE IS REQUIRED DUE TO POOR INSTALLATION PRACTICES.



CHECK DAM - TEMPORARY (PREFABRICATED)

CHECK DAM - TEMPORARY (STONE)

DITCH SLOPE	PLACEMENT INTERVAL **
1 %	15 m
2 %	12 m
3 %	8 m
4 %	6 m
5 %	5 m

** BASED ON 0.25 m TYPICAL HEIGHT

DITCH SLOPE	PLACEMENT INTERVAL **
1 %	60 m
2 %	30 m
3 %	20 m
4 %	15 m
5 %	12 m
6 %	10 m
8 %	7.5 m
10 %	6 m

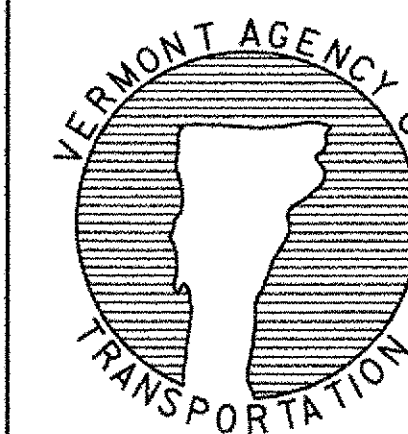
** BASED ON 0.6 m TYPICAL HEIGHT

NOTE: ALL DIMENSIONS ARE IN MILLIMETERS (mm) EXCEPT WHERE NOTED.

REVISIONS AND CORRECTIONS
MAY 15, 2004 N. GARBACK

Metric
DETAIL
EPSC-2M

EROSION PREVENTION &
SEDIMENT CONTROL DETAILS
CHECK DAMS



STATE OF VERMONT AGENCY OF TRANSPORTATION	
Town Of LYNDON	Bridge No. 2
Highway No. VT 114	Log Sta. Surv. Sta.
VT 114 OVER PASSUMPSIC RIVER	
EPSC-2M	
Designed By VTRANS	Drawn By B. J. MASSE
Checked By VTRANS	Bridge Design Supervisor M. A. COLGAN Date 3/06
PROJECT LYNDON	PROJECT NO. BRF 0269 (10)
I.G.C. Info.	
Bridge Sheet No.	Sheet 69 of 72