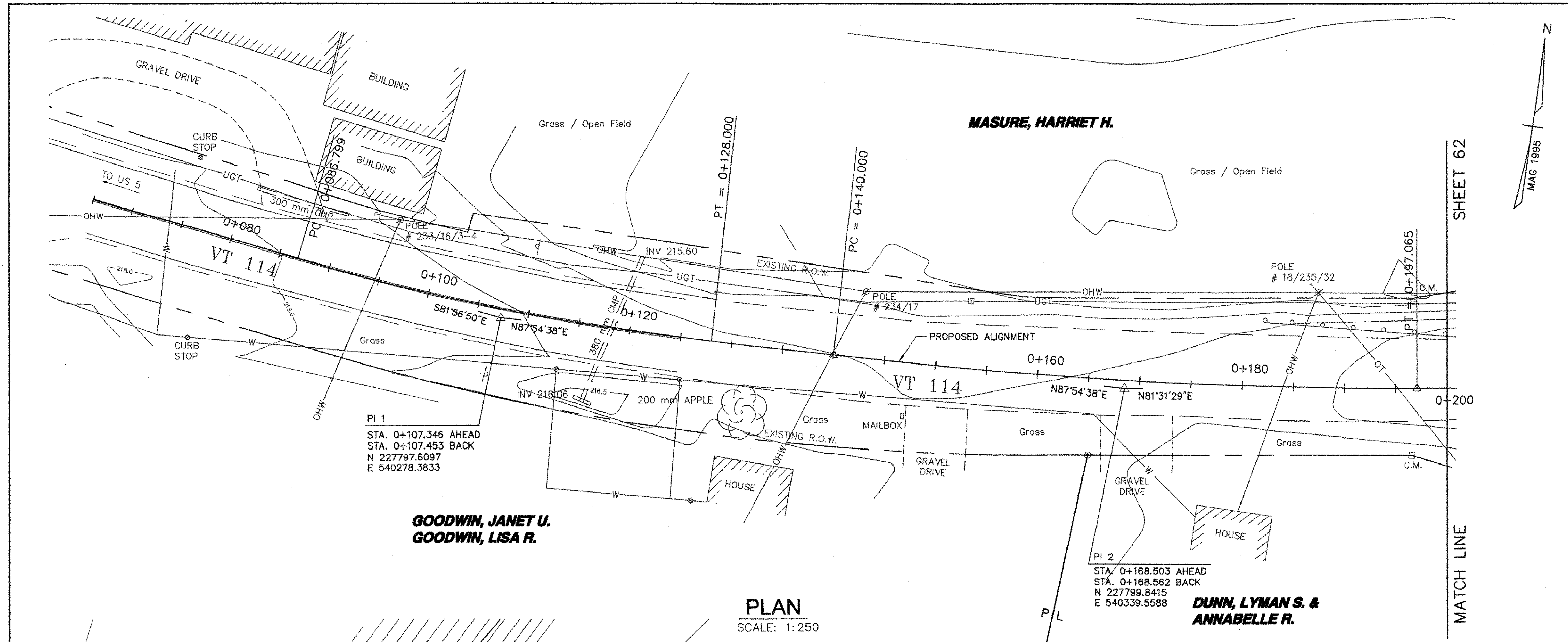


EXISTING LEGEND

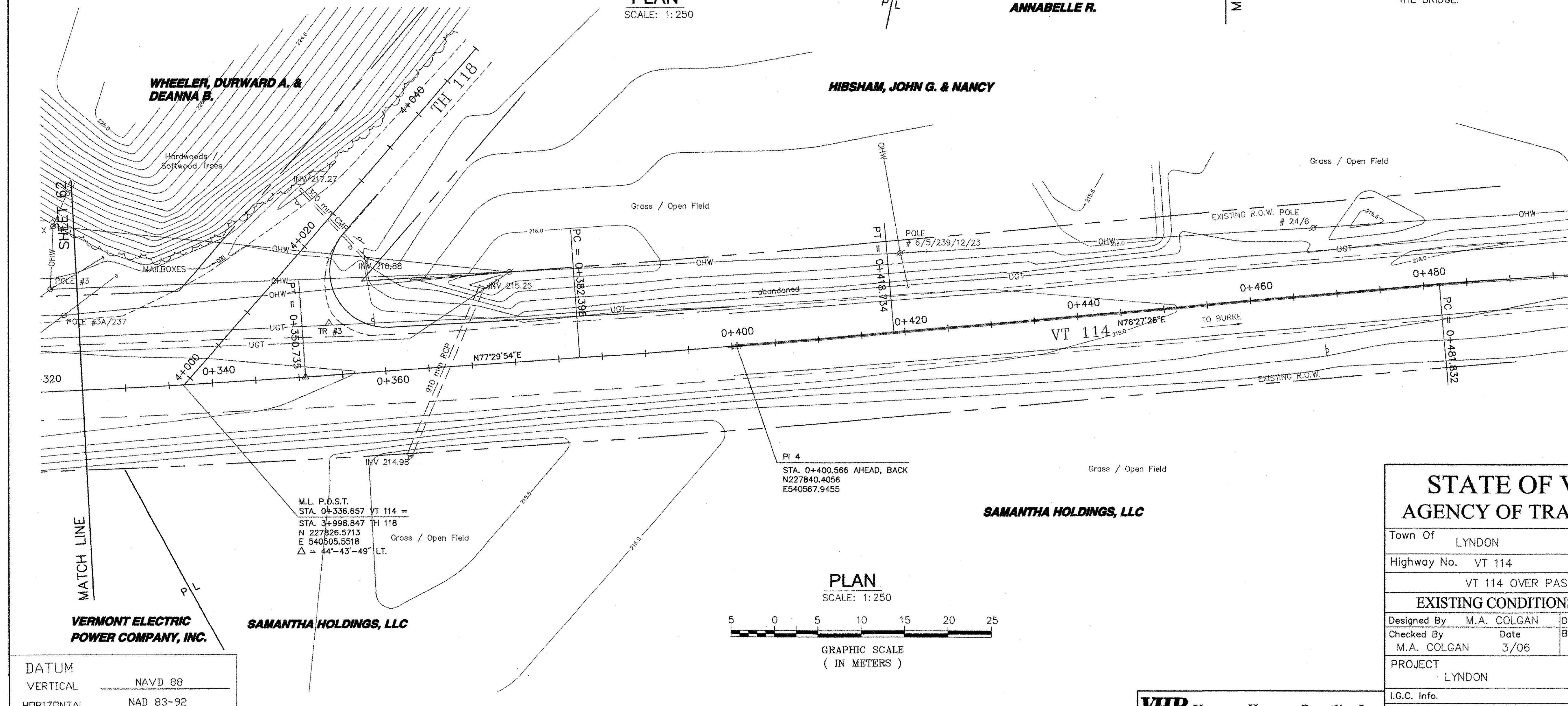
- EXISTING GUARDRAIL
- TREELINE
- OHW OVERHEAD UTILITY
- UGT UNDERGROUND TELEPHONE
- UGE UNDERGROUND ELECTRIC
- CENTERLINE DITCH
- CULVERT
- UTILITY POLE W/GUY
- SIGN
- TELEPHONE MARKER
- TR #1 TRAVERSE POINT

NOTES:

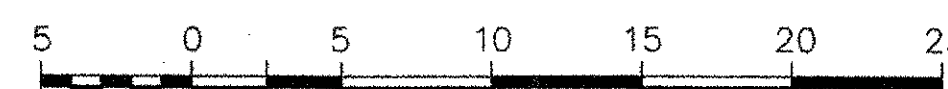
1. NO "THREATENED & ENDANGERED SPECIES" OR HISTORIC RESOURCES HAVE BEEN IDENTIFIED FOR THIS PROJECT.
2. EXISTING PASSUMPSIC RIVER CHANNEL BANKS ARE ARMORED WITH HEAVY STONE FILL UPSTREAM, DOWNSTREAM, AND UNDER THE BRIDGE.



PLAN
SCALE: 1:250



PLAN
SCALE: 1:250



GRAPHIC SCALE
(IN METERS)

DATUM	
VERTICAL	NAVD 88
HORIZONTAL	NAD 83-92

STATE OF VERMONT AGENCY OF TRANSPORTATION	
Town Of LYNDON	Bridge No. 2
Highway No. VT 114	Log Sta.
	Surv. Sta.
VT 114 OVER PASSUMPSIC RIVER	
EXISTING CONDITIONS SITE PLAN (2 OF 2)	
Designed By M.A. COLGAN	Drawn By B.J. MASSE
Checked By M.A. COLGAN	Date 3/06
	Bridge Design Supervisor M.A. COLGAN Date 3/06
PROJECT LYNDON	PROJECT NO. BRF 0269(10)
I.G.C. Info.	
Bridge Sheet No. 50544ER1	Sheet 63 of 72