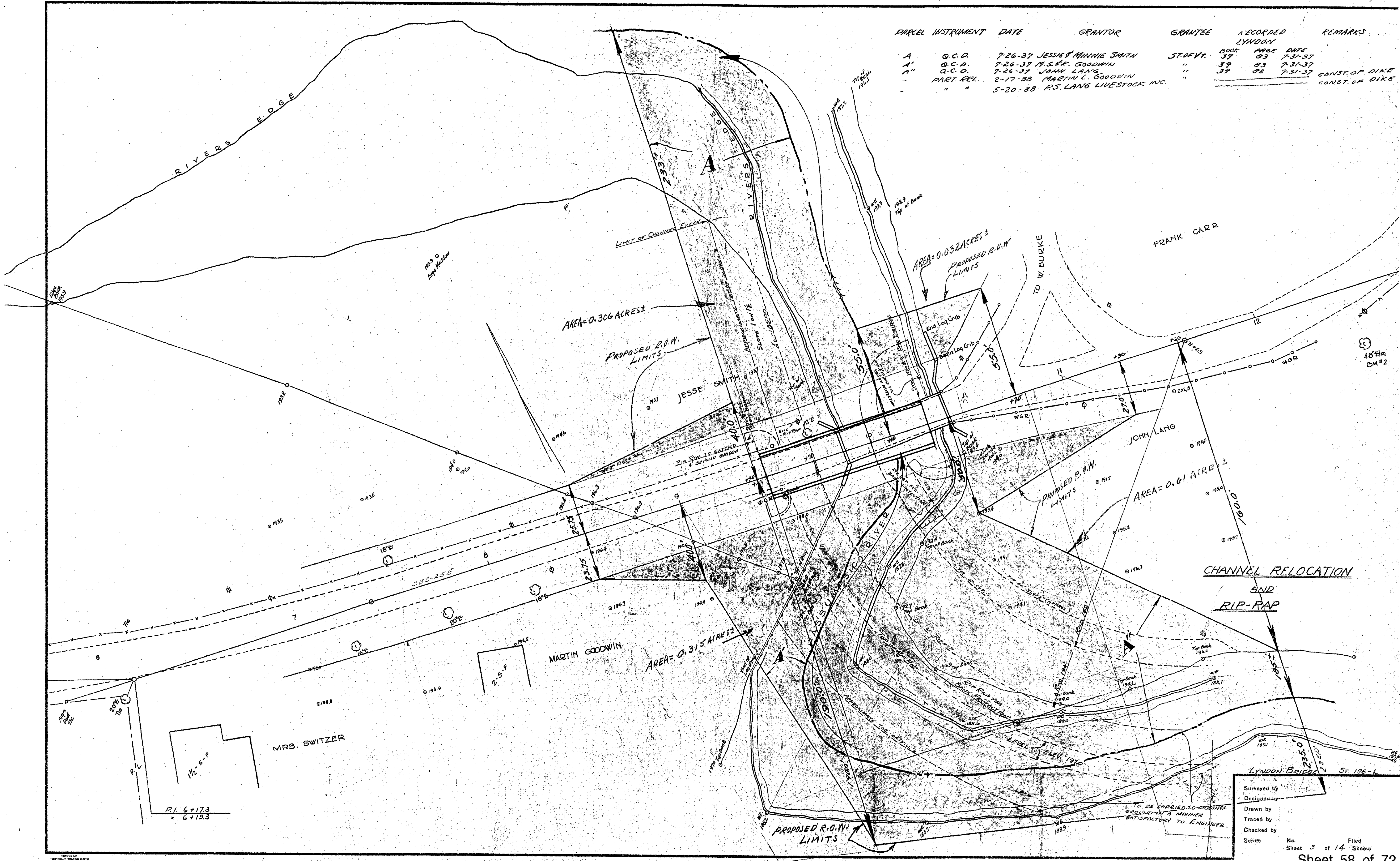


PARCEL	INSTRUMENT	DATE	GRANTOR	GRANTEE	RECORDED LYNDON	REMARKS
A	Q.C.D.	7-26-37	JESSE & MINNIE SMITH	ST. OF VT.	BOOK 39 PAGE 83	DATE 7-31-37
A'	Q.C.D.	7-26-37	M. S. H. GOODWIN	"	39 83	7-31-37
"	Q.C.D.	7-26-37	JOHN LANG	"	39 83	7-31-37
"	PART. REL.	2-17-38	MARTIN L. GOODWIN	"	39 82	7-31-37
"	"	5-20-38	P.S. LANG LIVESTOCK INC.	"		CONST. OF DIKE



Surveyed by  
 Designed by  
 Drawn by  
 Traced by  
 Checked by  
 Series

TO BE CARRIED TO ORIGINAL  
 GROUND IN A MANNER  
 SATISFACTORY TO ENGINEER.

No. 3 of 14 Sheets  
 Filed  
 Sheet 58 of 72