

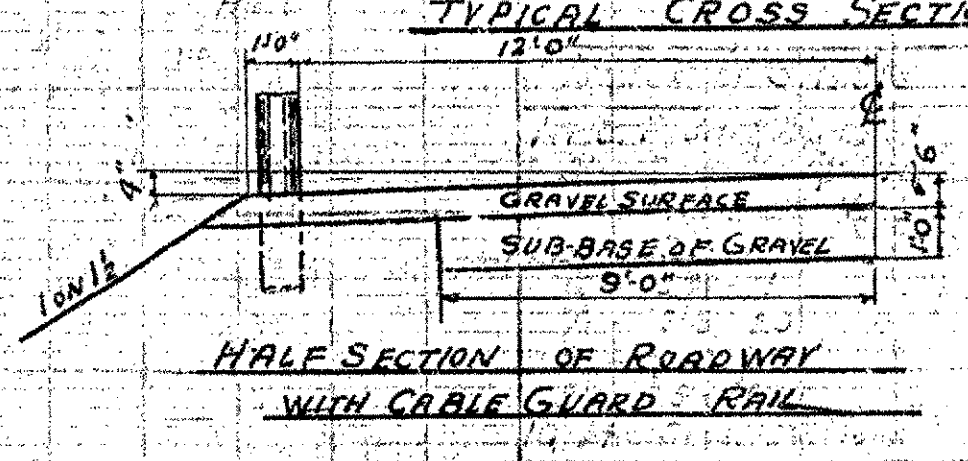
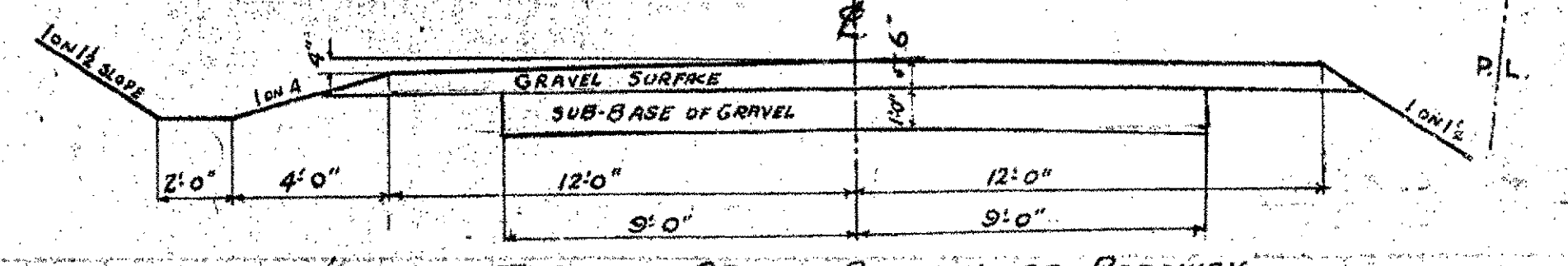
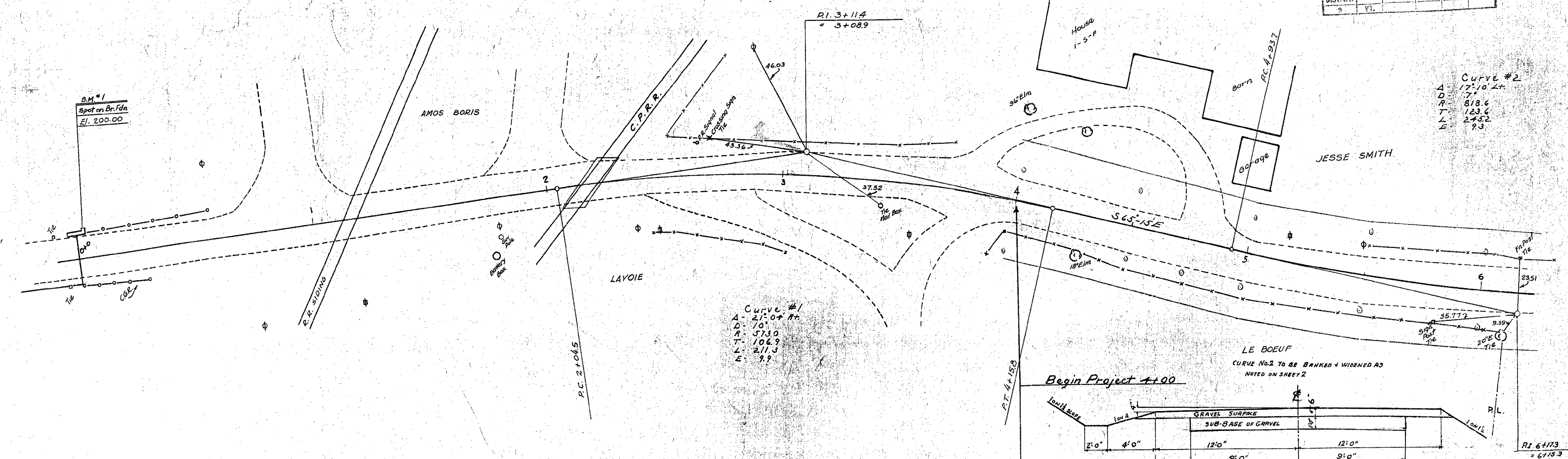
FED. ROAD DIST. NO.	STATE	FED. AID PROJ. NO.	FISCAL YEAR	SHEET NO.	TOTAL SHEETS
9	VI.				

Curve #2

A	17° 10' 24"
D	7'
T	818.6
L	123.4
E	245.2
	9.3

Curve #1

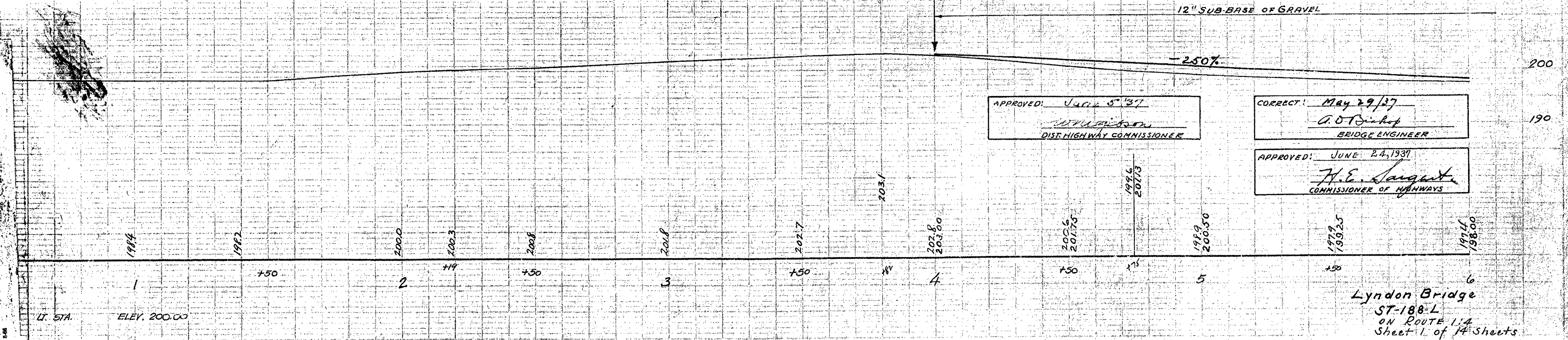
A	21° 04' 14"
D	10'
T	573.0
L	106.9
E	211.3
	9.7



LANDSCAPING
ALL FILL SLOPES SHALL BE TAKEN CARE OF UNDER ITEM 101 - FINISH GRADING, FERTILIZING AND SEEDING.

- LIST OF SHEETS
- 142 PLAN AND PROFILE
 - 143 LAYOUT OF CHANNEL RELOCATION & R/W MAP
 - 4 DETAILS OF ABUTMENTS 1+2
 - 3 518 No. 20 SQ - SUPERSTRUCTURE
 - 6 SB5C - CABLE RAIL
 - 7 SB11 - BARRICADES, SIGNS, LIGHTS
 - 8 SB20 - TYPICAL DETAILS (DETAILS C, E, K, L, + GENERAL NOTES)
 - 9 SB30 - CABLE GUARD RAIL
 - 10 1A - CROSS SECTIONS

PROJECT	LYNDON BRIDGE
NUMBER	ST. 188 L
TYPE	
CONTRACTOR	
YEAR	
LOCATION	Sub. Sta. 21+59 - 31+33
BRIDGE	Br. 2 - Presumpsic Riv.



APPROVED: June 5 '37
DIST. HIGHWAY COMMISSIONER

CORRECT: May 29 '37
A. O. Bishop
BRIDGE ENGINEER

APPROVED: JUNE 24, 1937
H. E. Langert
COMMISSIONER OF HIGHWAYS

Lyndon Bridge
ST-188-L
ON ROUTE 114
Sheet 1 of 14 Sheets