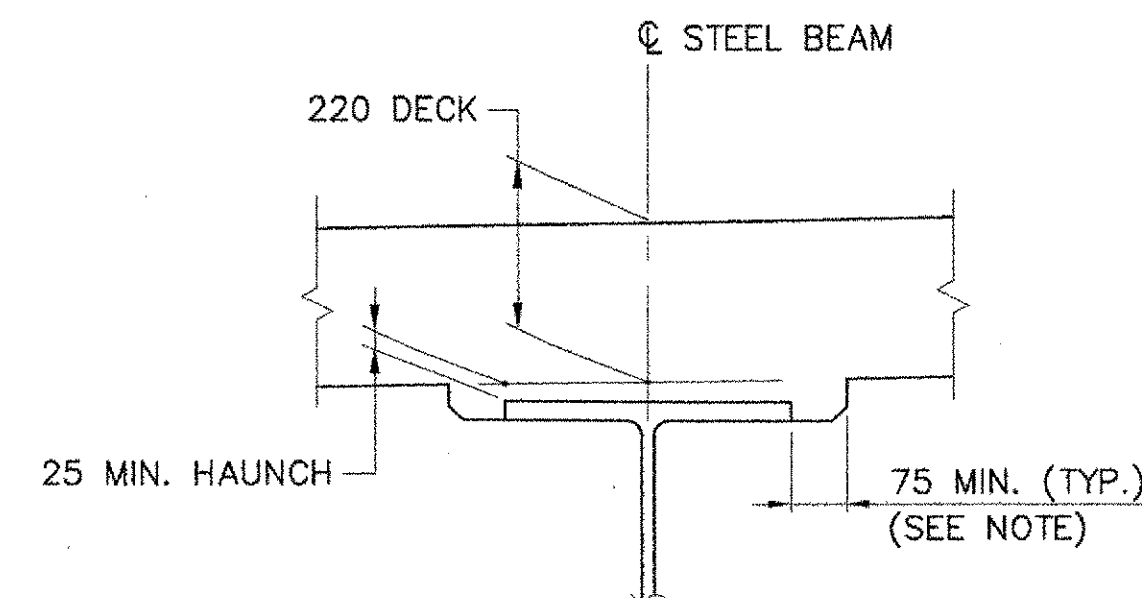


SECTION A-A

CURB CONSTRUCTION JOINT NOTES:

1. CONCRETE CURB CONSTRUCTION JOINTS SHALL BE SPACED A MAXIMUM OF 4500 mm CENTER TO CENTER AND SHALL BE 550 mm MINIMUM FROM THE CENTER OF THE NEAREST BRIDGE RAIL POST. CONCRETE SHALL BE PLACED IN ALTERNATING SECTIONS WITH A MINIMUM OF 48 HOURS BETWEEN ADJACENT POURS.
2. LONGITUDINAL REINFORCING SHALL PASS THROUGH CONCRETE CURB CONSTRUCTION JOINTS UNLESS OTHERWISE SHOWN.
3. POLYURETHANE JOINT SEALER, PER SUBSECTION 524.06 (d), SHALL MATCH THE CONCRETE COLOR. COST TO BE INCLUDED IN THE UNIT PRICE BID FOR ADJACENT CONCRETE

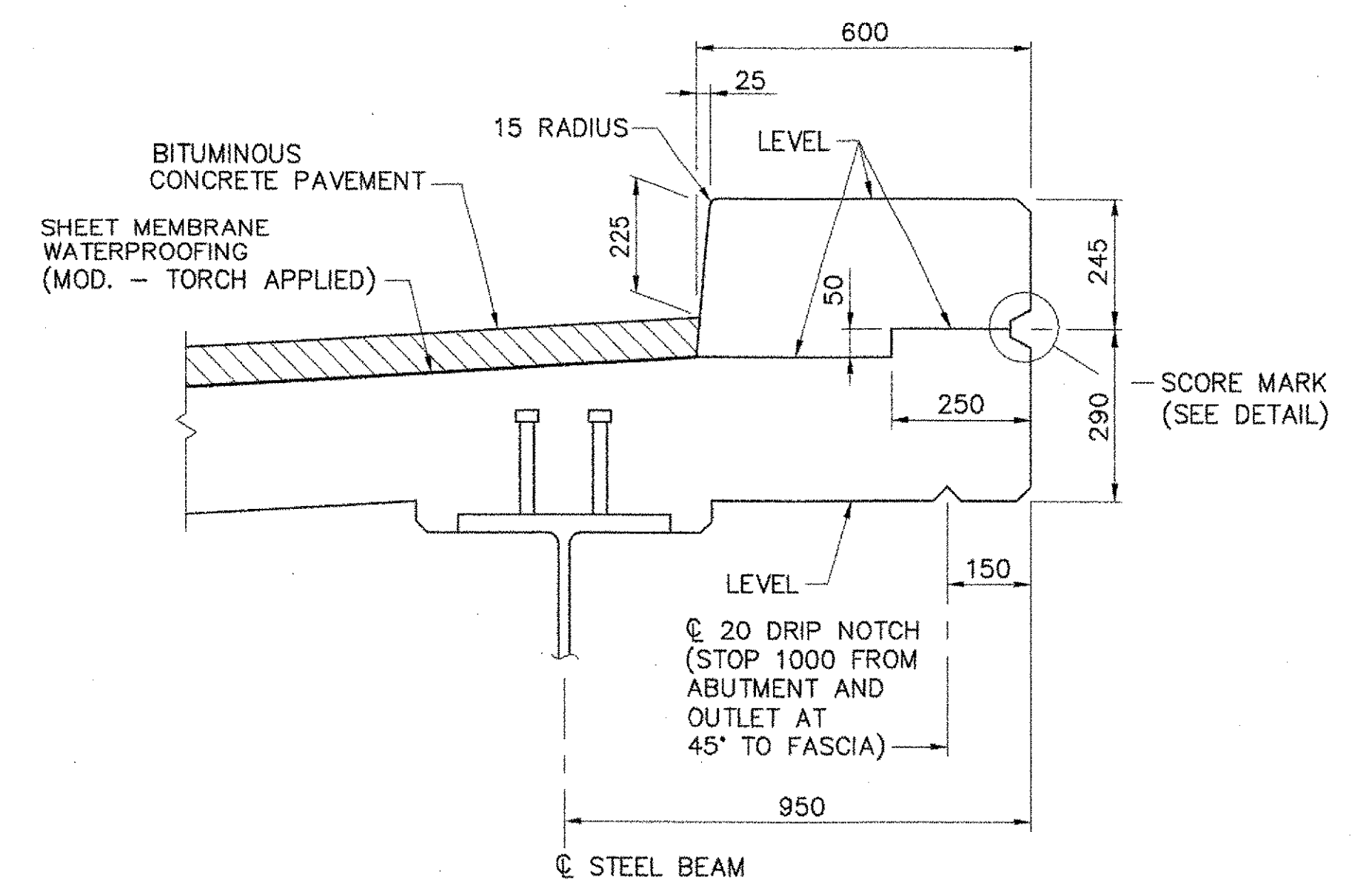


NOTE:

THE 75 HORIZONTAL SECTION MAY BE ELIMINATED FOR FORMING SYSTEMS DESIGNED FOR THE CONSTRUCTION OF VERTICAL HAUNCHES. SYSTEMS SHALL BE SUBMITTED FOR APPROVAL TO THE STRUCTURES ENGINEER. ALL VOIDS SHALL BE FILLED WITH MORTAR, TYPE IV OR AN EQUIVALENT PRODUCT FROM THE APPROVED PRODUCTS LIST. ALL COST SHALL BE INCLUDED UNDER ITEM 501.33, CONCRETE HIGH PERFORMANCE CLASS A.

TYPICAL HAUNCH DETAIL

NOT TO SCALE

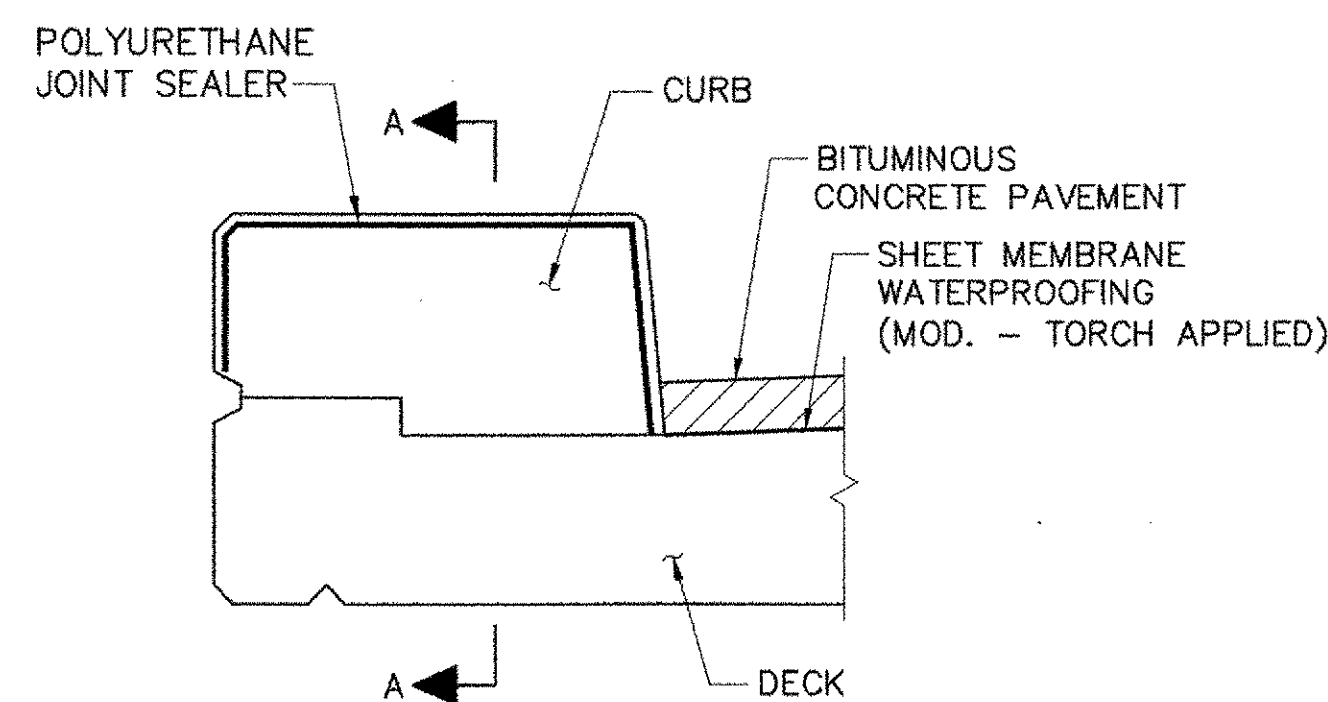


TYPICAL CURB DETAIL

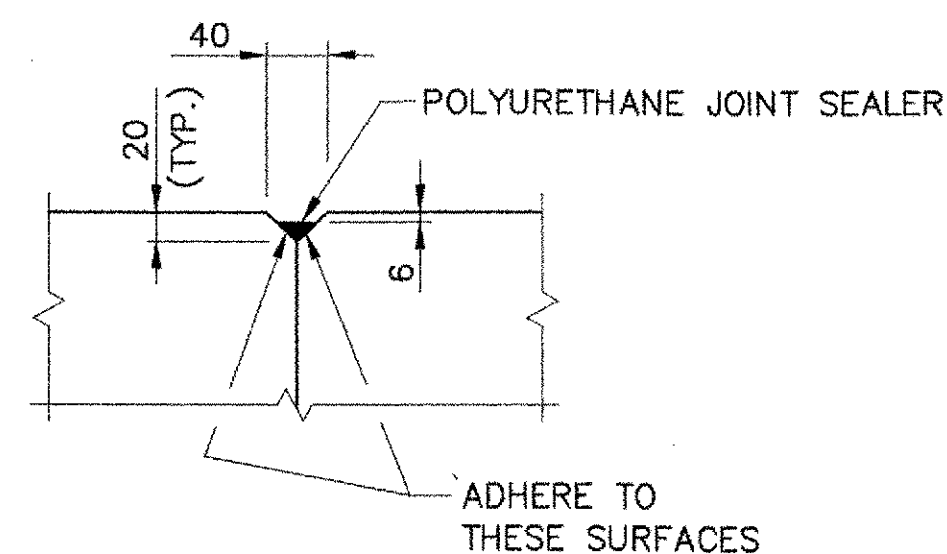
(BRIDGE RAIL NOT SHOWN)



SCALE IN MILLIMETERS
1:10



TYPICAL SECTION

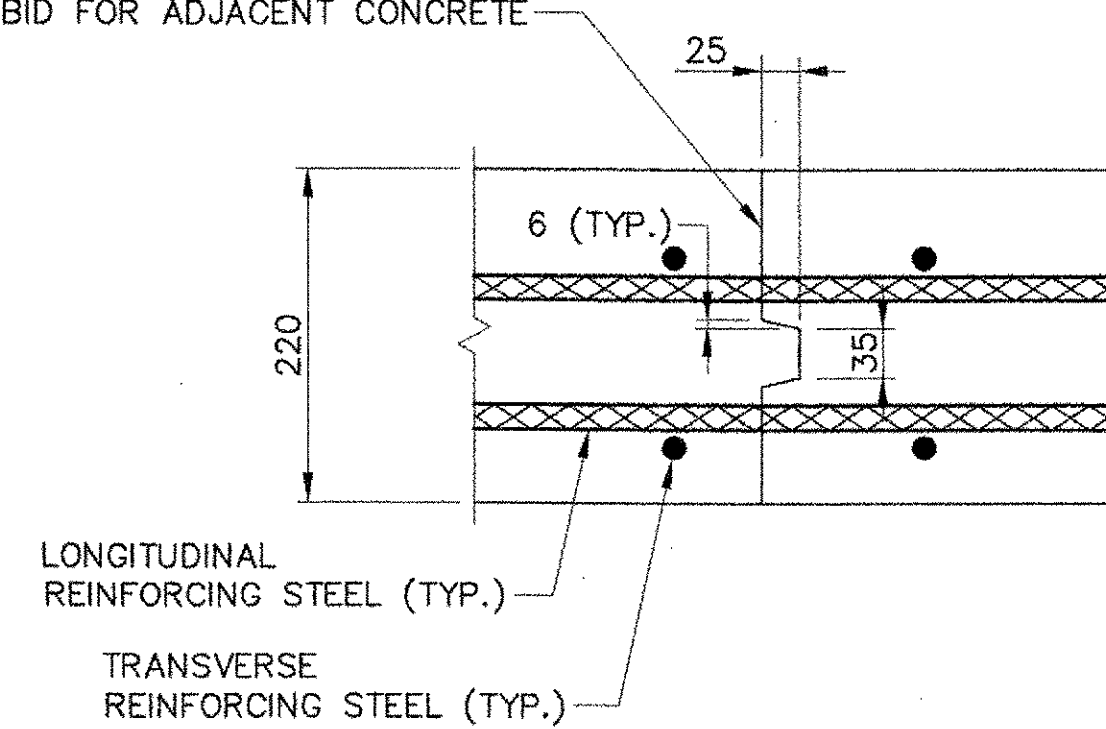


DETAIL B

CONCRETE CURB CONSTRUCTION JOINT

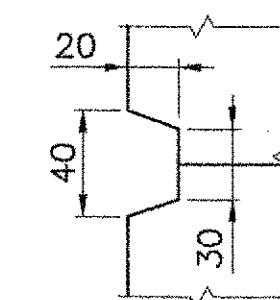
NOT TO SCALE

APPLY EPOXY BONDING COMPOUND BEFORE PLACING NEW CONCRETE. COST TO BE INCLUDED IN THE UNIT PRICE BID FOR ADJACENT CONCRETE.



TRANSVERSE DECK CONSTRUCTION JOINT DETAIL

NOT TO SCALE



SCORE MARK DETAIL

NOT TO SCALE

| STATE OF VERMONT AGENCY OF TRANSPORTATION | | | |
|--|---------------------------|--------------------------|--------------|
| Town Of | LYNDON | Bridge No. | 2 |
| Highway No. | VT 114 | Log Sta. | |
| | | Surv. Sta. | |
| VT 114 OVER PASSUMPSIC RIVER | | | |
| DECK DETAILS | | | |
| Designed By | J.T. KLEIN | Drawn By | B.J. MASSE |
| Checked By | L.S. GARDNER | Date | 3/06 |
| | | Bridge Design Supervisor | M.A. COLGAN |
| | | Date | 3/06 |
| PROJECT | LYNDON | PROJECT NO. | BRF 0269(10) |
| I.G.C. Info. | Bridge Sheet No. 50544DDT | Sheet | 26 of 72 |