

LEGEND  
 --- TEMPORARY CONCRETE TRAFFIC BARRIER

- EXISTING LEGEND**
- o — EXISTING GUARDRAIL
  - TREELINE
  - OHW — OVERHEAD UTILITY
  - UGT — UNDERGROUND TELEPHONE
  - UGE — UNDERGROUND ELECTRIC
  - - - CENTERLINE DITCH
  - CULVERT
  - UTILITY POLE W/GUY
  - SIGN
  - TELEPHONE MARKER
  - TR #1 — TRAVERSE POINT

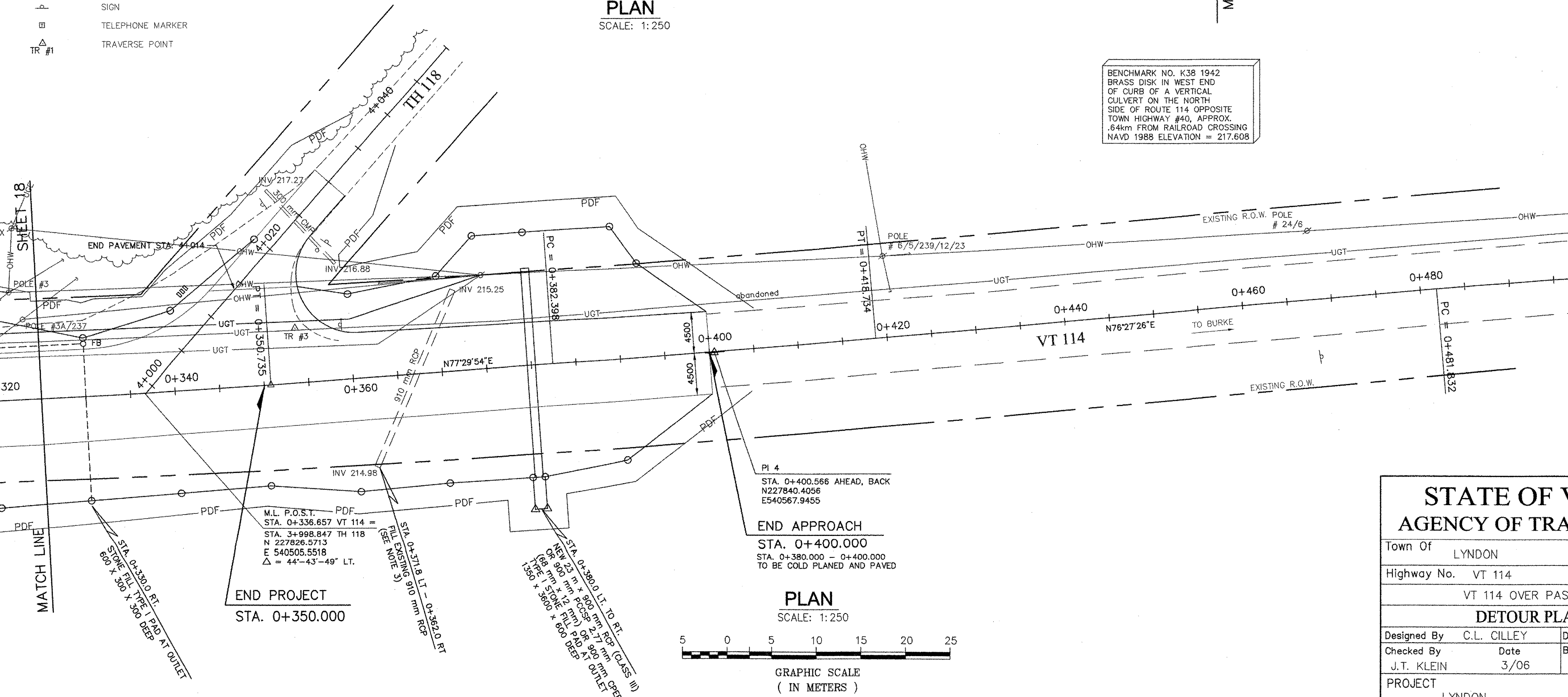
PI 1  
 STA. 0+107.346 AHEAD  
 STA. 0+107.453 BACK  
 N 227°57'50.97"  
 E 54°02'78.3833"

**BEGIN APPROACH**  
 STA. 0+125.000  
 STA. 0+125.000 - 0+140.000  
 TO BE COLD PLANNED AND PAVED

**DETOUR CURVE 1 INFO**  
 $\Delta = 20^\circ 44' 59"$   
 R = 65.000 m  
 T = 11.90 m  
 L = 23.540 m  
 E = 1.08 m

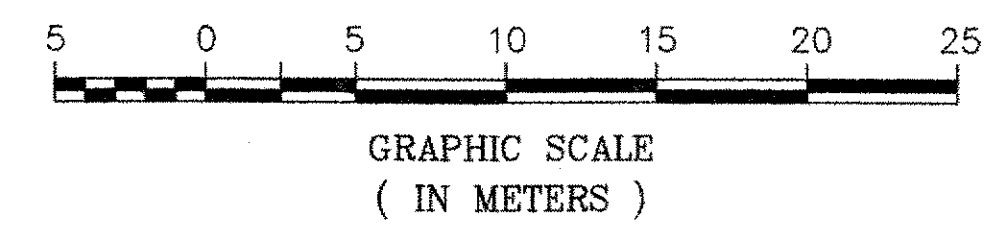
**DETOUR CURVE 2 INFO**  
 $\Delta = 24^\circ 20' 17"$   
 R = 65.000 m  
 T = 14.02 m  
 L = 27.611 m  
 E = 1.49 m

BENCHMARK NO. K38 1942  
 BRASS DISK IN WEST END  
 OF CURB OF A VERTICAL  
 CULVERT ON THE NORTH  
 SIDE OF ROUTE 114 OPPOSITE  
 TOWN HIGHWAY #40, APPROX.  
 .64km FROM RAILROAD CROSSING  
 NAVD 1988 ELEVATION = 217.608



**END APPROACH**  
 STA. 0+400.000  
 STA. 0+380.000 - 0+400.000  
 TO BE COLD PLANNED AND PAVED

**END PROJECT**  
 STA. 0+350.000



<b>STATE OF VERMONT AGENCY OF TRANSPORTATION</b>			
Town Of	LYNDON	Bridge No.	2
Highway No.	VT 114	Log Sta.	
		Surv. Sta.	
VT 114 OVER PASSUMPSIC RIVER			
<b>DETOUR PLAN (2 OF 2)</b>			
Designed By	C.L. CILLEY	Drawn By	B.J. MASSE
Checked By	Date	Bridge Design Supervisor	
J.T. KLEIN	3/06	M.A. COLGAN Date 3/06	
PROJECT	LYNDON	PROJECT NO.	BRF 0269(10)
I.G.C. Info.			
Bridge Sheet No.	50544DETOUR	Sheet	19 of 72