

BEGIN BRIDGE
STA. 0+223.630
F.G. ELEV. = 218.824

M.L. P.O.T.
STA. 0+217.248 VT 114 =
STA. 3+001.022
N 227807.0258
E 540387.7722
 $\Delta = 104^{\circ}47'37''$ RT.

STA. 1+172.000
 $\Delta = 90^{\circ}00'00''$ LT.

M.L. P.O.T.
STA. 0+228.000 VT 114 =
STA. 1+160.000 CHANNEL LINE
 $\Delta = 90^{\circ}00'00''$ LT.

END BRIDGE
STA. 0+254.200
F.G. ELEV. = 219.424

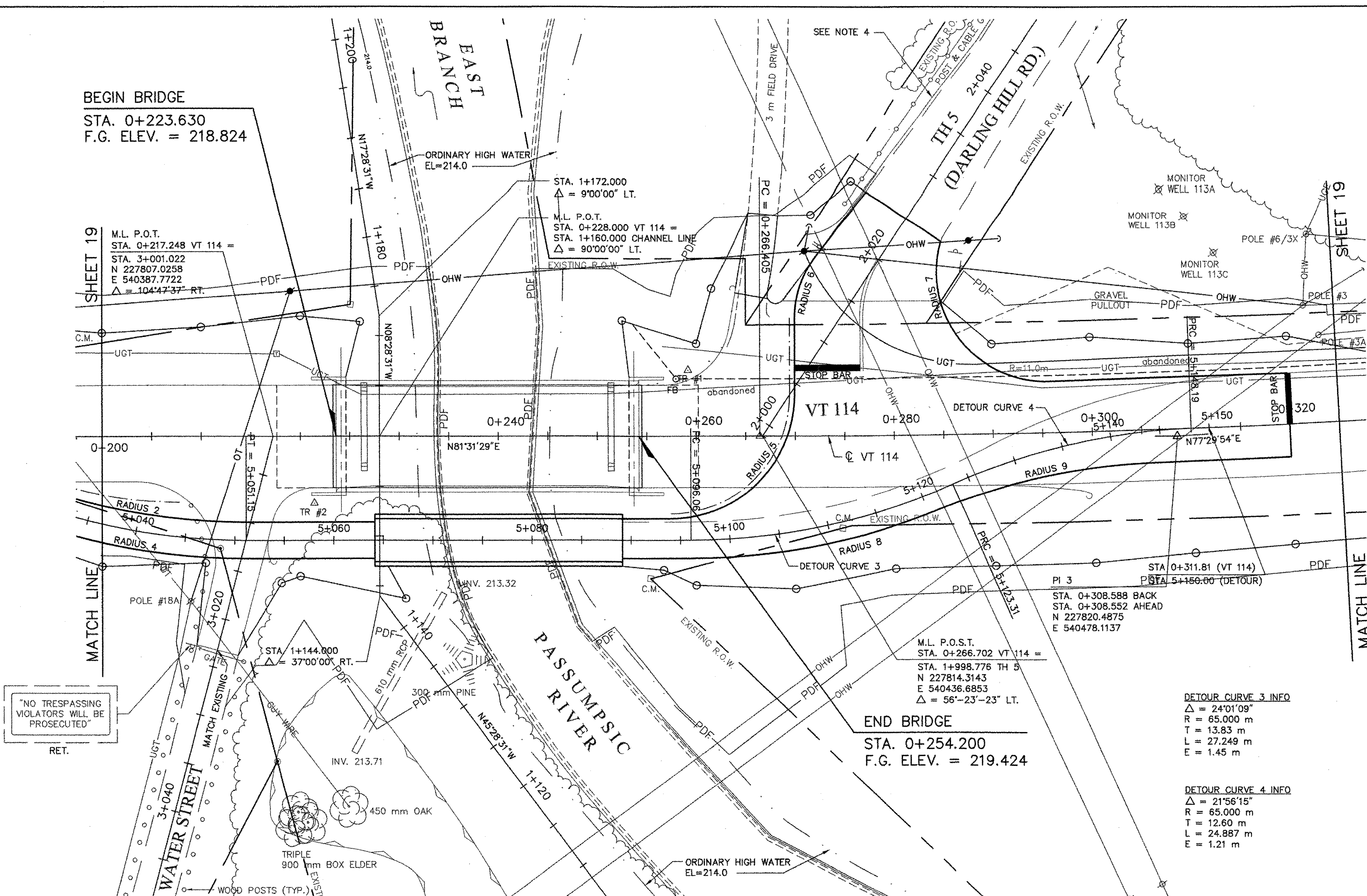
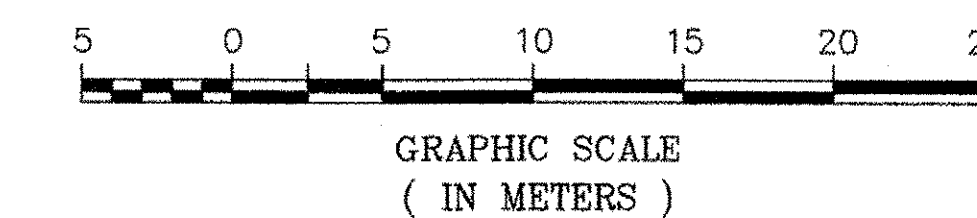
DETOUR RADIUS INFO					
RADIUS NO.	RADIUS	BEGIN STA	OFFSET	END STA	OFFSET
RADIUS 1	67.00 m	0+160.00	4.5 m LT	5+020.12	2.0 m LT
RADIUS 2	63.25 m	5+020.00	2.0 m LT	5+051.15	1.8 m RT
RADIUS 3	63.00 m	5+001.44	3.3 m RT	5+025.78	1.8 m RT
RADIUS 4	66.80 m	5+025.78	1.8 m RT	5+051.15	1.8 m RT
RADIUS 5	12.50 m	5+109.05	2.1 m LT	5+109.40	13.5 m LT
RADIUS 6	10.00 m	5+111.69	20.9 m LT	5+117.50	26.2 m LT
RADIUS 7	10.94 m	5+125.82	23.1 m LT	5+134.75	6.7 m LT
RADIUS 8	66.80 m	5+096.06	1.8 m RT	5+121.24	1.8 m RT
RADIUS 9	63.00 m	5+121.24	1.8 m RT	5+143.65	3.1 m RT

GENERAL NOTES

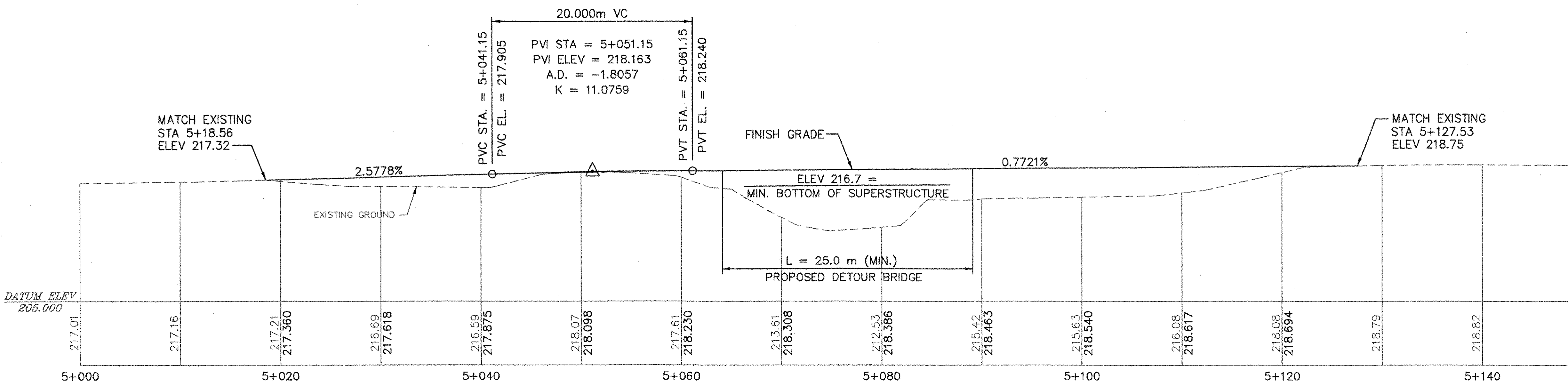
- TRAFFIC SHALL BE MAINTAINED DURING CONSTRUCTION WITH A DETOUR AND TEMPORARY BRIDGE. THE DETOUR AND BRIDGE SHALL BE IN ACCORDANCE WITH AND PAID AS ITEM 528.10, ONE-WAY TEMPORARY BRIDGE (MOD.). THE CONTRACTOR SHALL SUBMIT THE DETOUR SIGNAGE AND ALIGNMENT PACKAGE TO THE ENGINEER FOR APPROVAL PRIOR TO COMMENCEMENT OF WORK.
- THE PURPOSE OF THE DETOUR PLAN AND PROFILE IS TO DEFINE APPROXIMATE SLOPE LIMITS. APPROXIMATE SLOPE LIMITS ARE BASED ON A 4.4 M WIDE TRAVELED WAY, SIDESLOPES STEEPER THAN 2:1. THE CONTRACTOR MAY SUBMIT AN ALTERNATIVE ALIGNMENT FOR THE ENGINEER'S APPROVAL. ADDITIONAL PERMITS OR RIGHT-OF-WAY REQUIRED FOR AN ALTERNATIVE DETOUR SHALL BE THE RESPONSIBILITY OF THE CONTRACTOR.
- DETOUR DESIGN SPEED IS 40 KM/H.
- THE TEMPORARY DETOUR SHALL BE PAVED TO A DEPTH OF 50 MM, AND A WIDTH OF 4.4 M (MIN.).
- TEMPORARY TRAFFIC BARRIER OUTSIDE THE LIMITS REQUIRED UNDER SECTION 528 SHALL BE PAID FOR UNDER ITEM 621.90.
- THE TEMPORARY BRIDGE AND FILLS FOR THE DETOUR WILL BE REMOVED DOWN TO THE ORIGINAL GRADE. ALL AREAS OF DISTURBANCE WILL BE IMMEDIATELY SEEDED AND MULCHED UPON COMPLETION OF THE FINAL GRADE TO PREVENT SOIL EROSION AND TO DISCOURAGE INVASION BY NUISANCE PLANTS.
- TEMPORARY ABUTMENTS SHALL BE NO CLOSER TO THE STREAM THAN THE FACE OF THE EXISTING ABUTMENTS. NO FILL WILL BE ALLOWED BELOW ORDINARY HIGH WATER.
- SEE SHEET 17 FOR TRAFFIC CONTROL PLAN.

LEGEND

— TEMPORARY CONCRETE TRAFFIC BARRIER



PLAN
SCALE: 1:250



PROFILE
SCALE: 1:250

**STATE OF VERMONT
AGENCY OF TRANSPORTATION**

Town Of	LYNDON	Bridge No.	2
Highway No.	VT 114	Log Sta.	
		Surv. Sta.	
VT 114 OVER PASSUMPSIC RIVER			
DETOUR PLAN (1 OF 2)			
Designed By	C.L. CILLEY	Drawn By	B.J. MASSE
Checked By	Date	Bridge Design Supervisor	
J.T. KLEIN	3/06	M.A. COLGAN Date 3/06	
PROJECT	LYNDON	PROJECT NO.	BRF 0269(10)
I.G.C. Info.			
Bridge Sheet No. 50544DETOUR		Sheet 18 of 72	