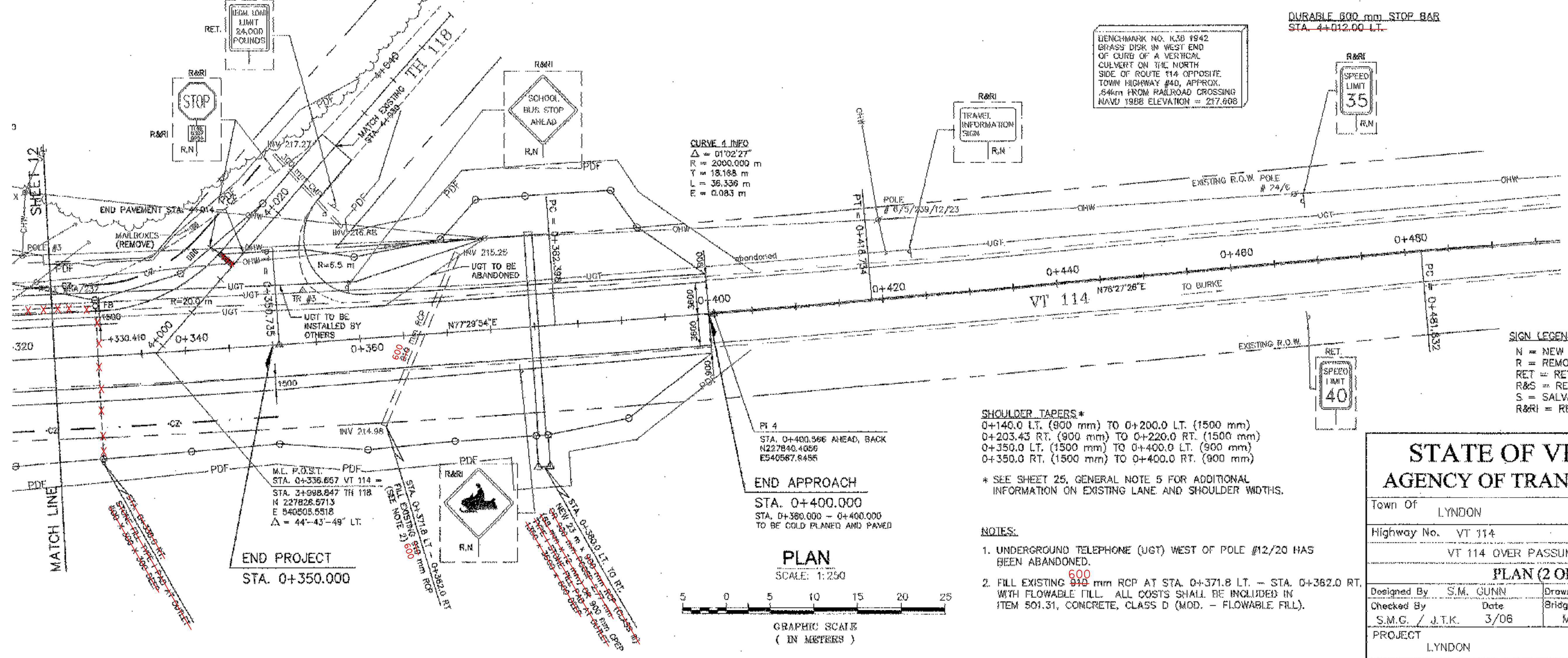
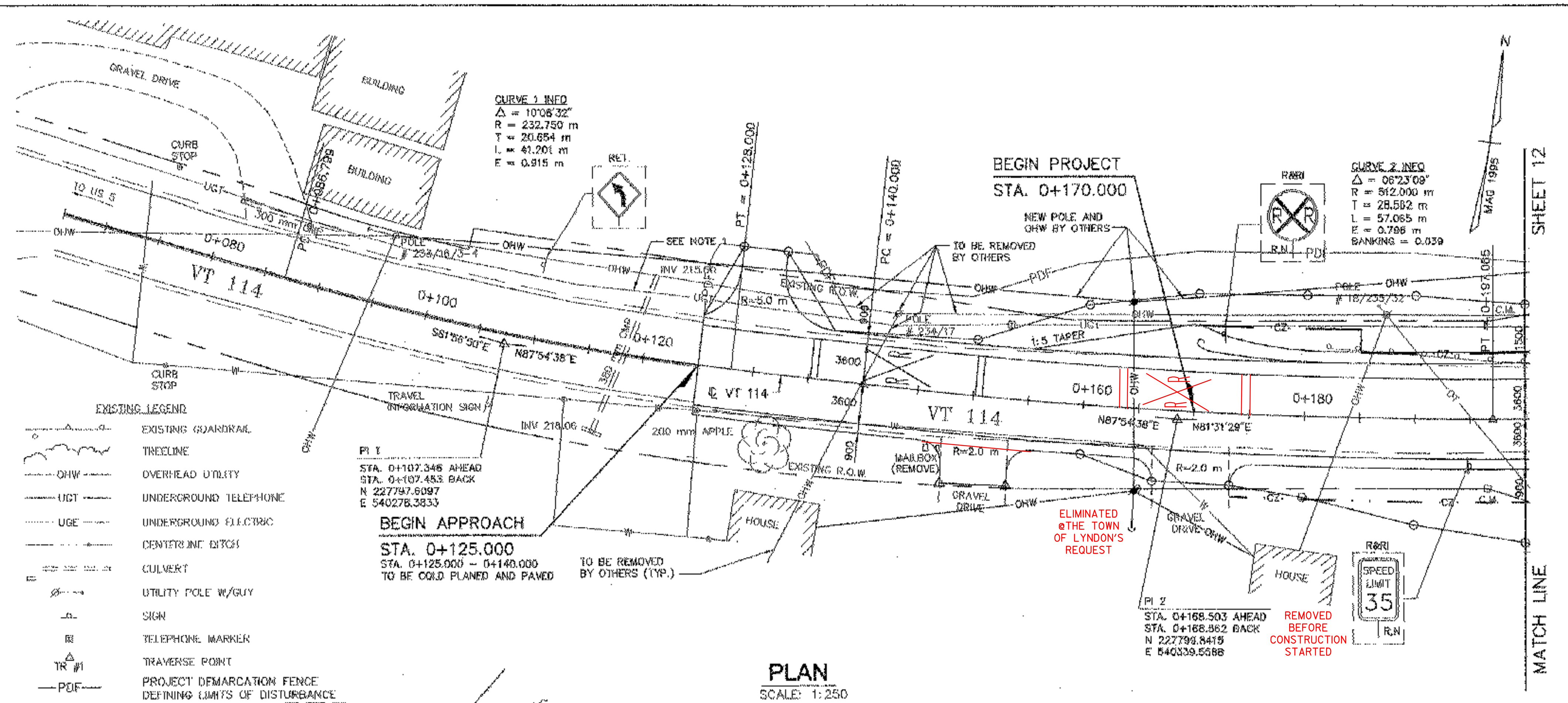


CONSTRUCTION NOTES

- REMOVAL AND DISPOSAL OF GUARDRAIL
STA. 0+182.1 - 0+200.0 LT.
- HEAVY DUTY STEEL BEAM GUARDRAIL
STA. 0+170.43 - 0+200.00 LT.
- DURABLE 100 mm WHITE LINE
0+120 STA. 0+125.0 - 0+200.0 LT. & RT.
STA. 0+325.0 - 0+335.0 LT.
STA. 0+359.0 - 0+400.0 LT. 0+40L3
STA. 0+325.0 - 0+400.0 RT. 0+40L1
- ANCHOR FOR STEEL BEAM RAIL
STA 0+174.43 LT
- DURABLE 100 mm YELLOW LINE (DOUBLE CENTER LINE)
STA. 0+125.0 - 0+200.0
STA. 0+325.0 - 0+339.0
STA. 0+351.0 - 0+400.0
- YIELDING MARKER POSIS.
STA. 0+380.0 LT. & RT.
- DURABLE RAILROAD CROSSING SYMBOL
STA. 0+143.0 LT.
0+170
- COLD PLANING - BITUMINOUS PAVEMENT
STA. 0+125.0 - 0+148.9 0+148.5
STA. 0+380.0 - 0+400.0
0+381.54
- CONCRETE CLASS D (MOD. - FLOWABLE FILL)
STA. 0+371.8 LT. - STA. 0+382.0 RT.
- UNDERDRAIN FLUSHING BASIN
STA. 0+330.0 LT.
- 150 mm UNDERDRAIN (MOD.)
STA. 0+325.0 - 0+330.0 LT.
- 150 mm UNDERDRAIN CARRIER PIPE
STA. 0+330.0 LT. - 0+330.0 RT.
- RELOCATE MAILBOX, SINGLE SUPPORT
STA. 0+146.0 RT.
STA. 4+010.0 LT.
- CONSTRUCT FIELD DRIVE (AGGREGATE SURFACE COURSE)
STA. 0+130.0 LT.
- DURABLE 600 mm STOP BAR
STA. 4+012.00 LT.



**STATE OF VERMONT
AGENCY OF TRANSPORTATION**

Town Of	LYNDON	Bridge No.	2
Highway No.	VT 114	Log Sta.	
	VT 114 OVER PASSUMPSIC RIVER	Surv. Sta.	
PLAN (2 OF 2)			
Designed By	S.M. GUNN	Drawn By	B.J. MASSE
Checked By	Date	Bridge Design Supervisor	
	S.M.G. / J.T.K. 3/06	M.A. COLGAN Date 3/06	
PROJECT	LYNDON	PROJECT NO.	BRF 0269(10)
I.G.C. Info.			
Bridge Sheet No. 50644PLN		Sheet 13 of 72	

- NOTES:**
- UNDERGROUND TELEPHONE (UGT) WEST OF POLE #12/20 HAS BEEN ABANDONED.
 - FILL EXISTING 600 mm RCP AT STA. 0+371.8 LT. - STA. 0+382.0 RT. WITH FLOWABLE FILL. ALL COSTS SHALL BE INCLUDED IN ITEM 501.31, CONCRETE, CLASS D (MOD. - FLOWABLE FILL).

