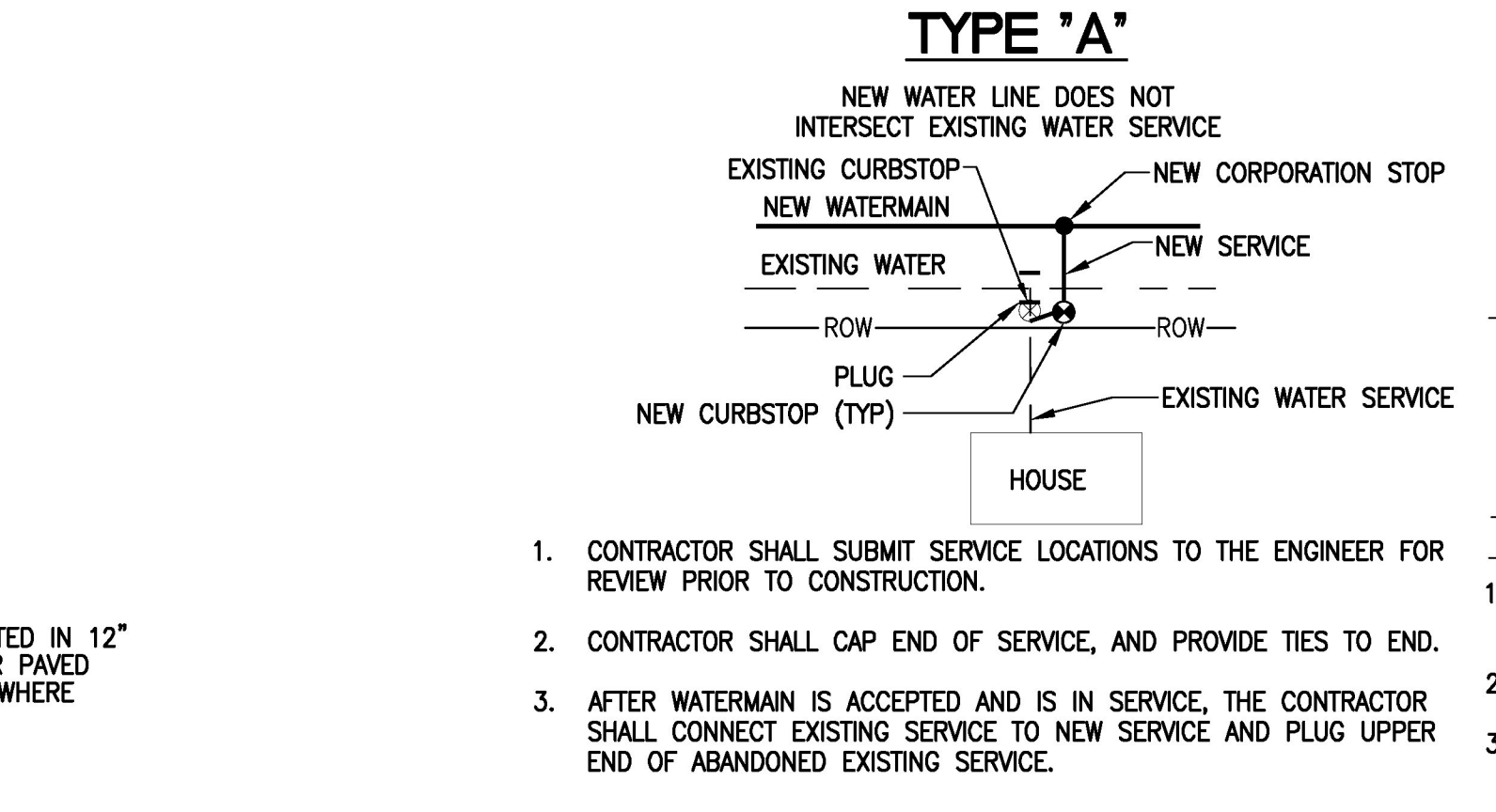


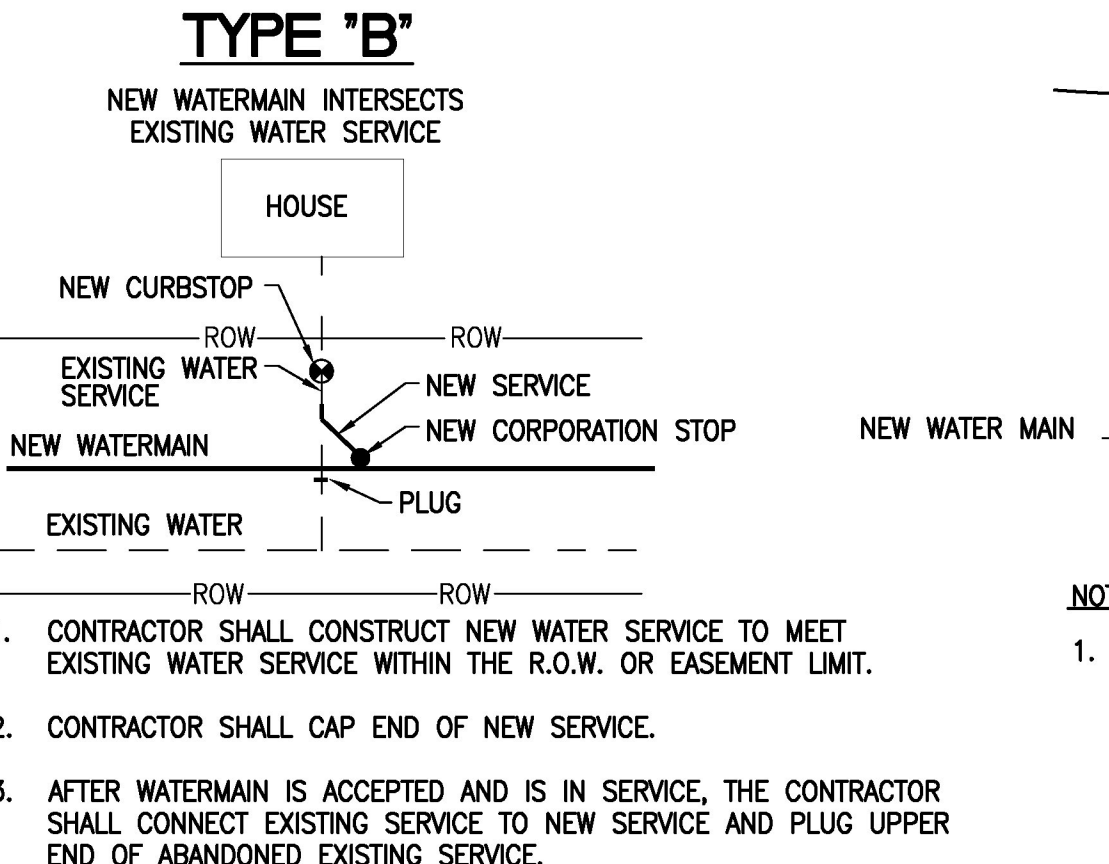
- TRENCH NOTES:**
- NO MECHANICAL TAMPERS SHALL BE USED DIRECTLY OVER PVC PIPE TO ENSURE PIPE IS NOT DAMAGED.
 - BEDDING TO PROVIDE A FIRM, STABLE, CONTINUOUS AND UNIFORM SUPPORT FOR THE FULL LENGTH OF PIPE.

A TYPICAL WATERLINE TRENCH DETAIL
SCALE: NONE



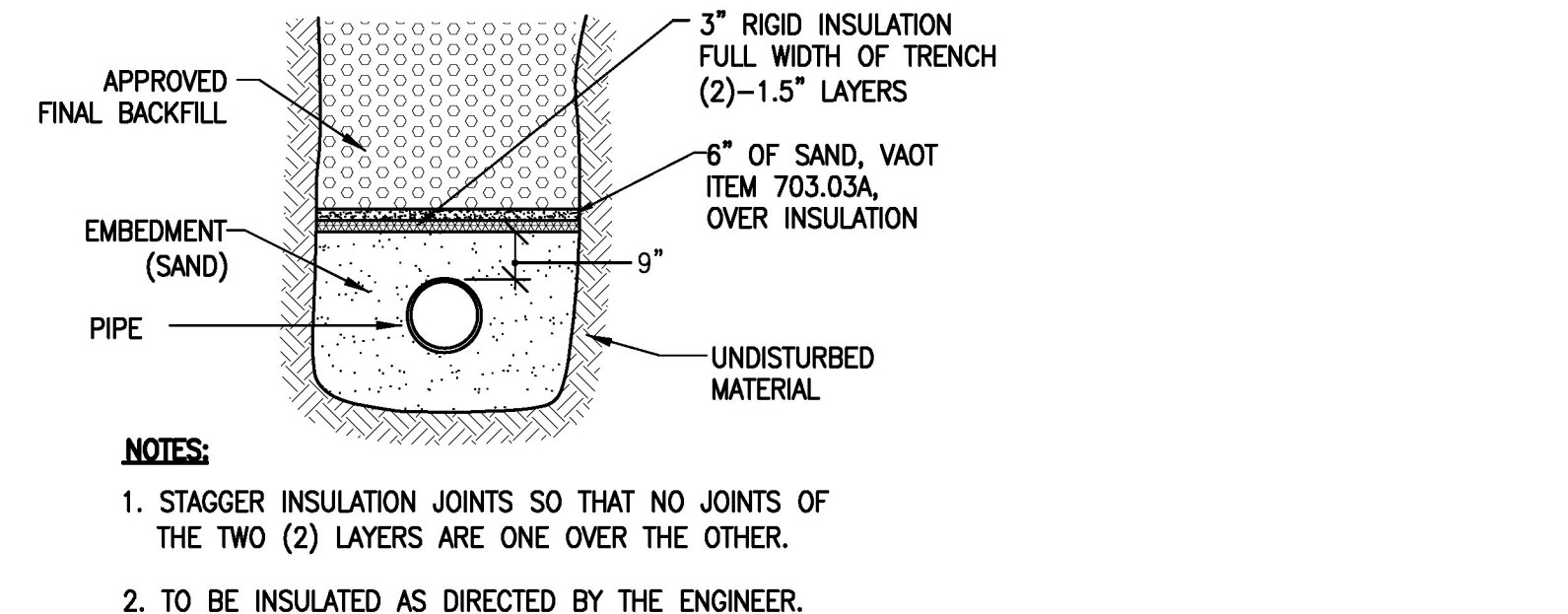
- CONTRACTOR SHALL SUBMIT SERVICE LOCATIONS TO THE ENGINEER FOR REVIEW PRIOR TO CONSTRUCTION.
- CONTRACTOR SHALL CAP END OF SERVICE, AND PROVIDE TIES TO END.
- AFTER WATERMAIN IS ACCEPTED AND IS IN SERVICE, THE CONTRACTOR SHALL CONNECT EXISTING SERVICE TO NEW SERVICE AND PLUG UPPER END OF ABANDONED EXISTING SERVICE.

B TYPICAL WATER SERVICE CONNECTIONS
SCALE: NONE



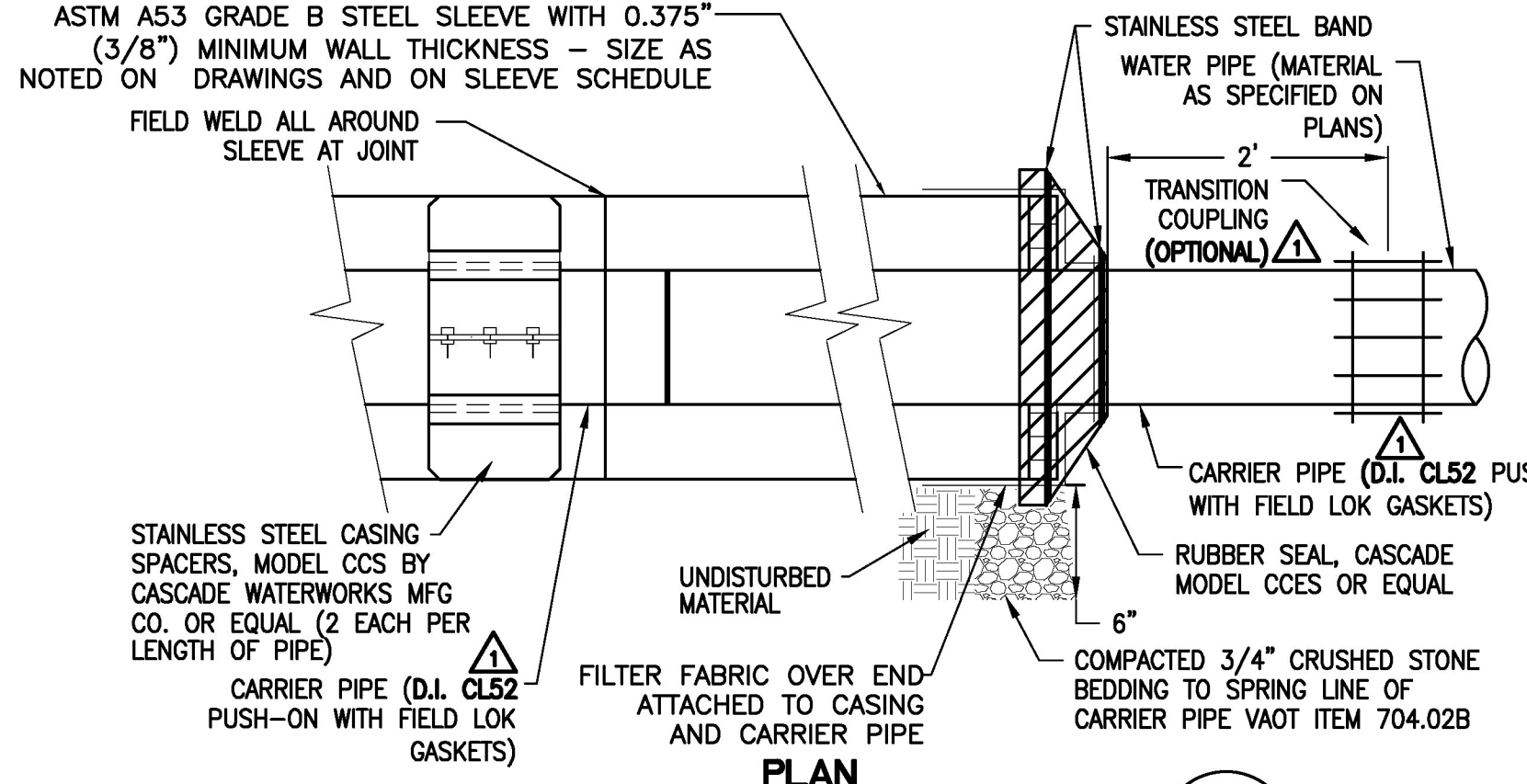
- NOTES:**
- TEFLON THREAD SEALANT TAPE SHALL BE USED ON ALL CORPORATION STOPS PRIOR TO INSERTION.
 - LEAVE ONE TO THREE THREADS SHOWING OUTSIDE OF PIPE. (A TORQUE OF 35 LBS. OR LESS IS RECOMMENDED).
 - CORPORATION STOPS SHALL NOT BE PLACED LESS THAN 12\"/>

C WATER SERVICE CONNECTION DETAIL
SCALE: NONE



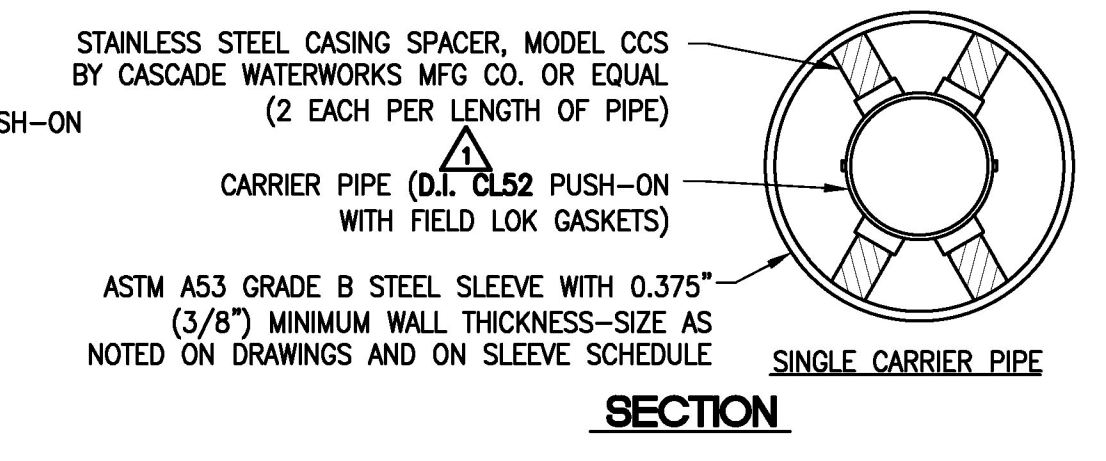
- NOTES:**
- STAGGER INSULATION JOINTS SO THAT NO JOINTS OF THE TWO (2) LAYERS ARE ONE OVER THE OTHER.
 - TO BE INSULATED AS DIRECTED BY THE ENGINEER.

D INSULATION DETAIL
SCALE: NONE

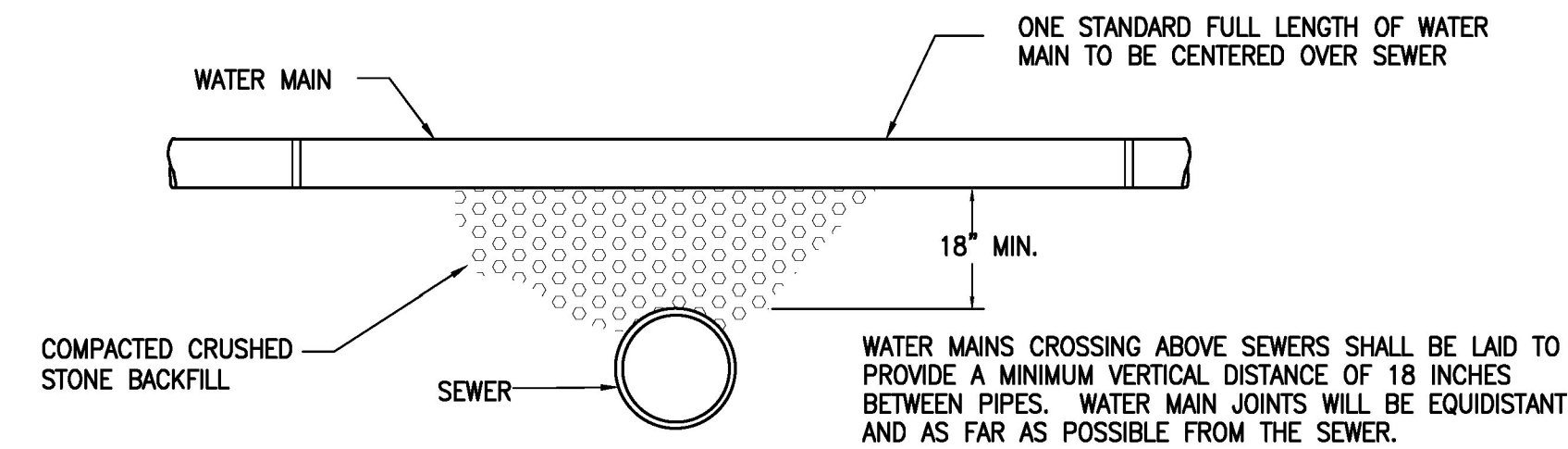


SLEEVE SCHEDULE

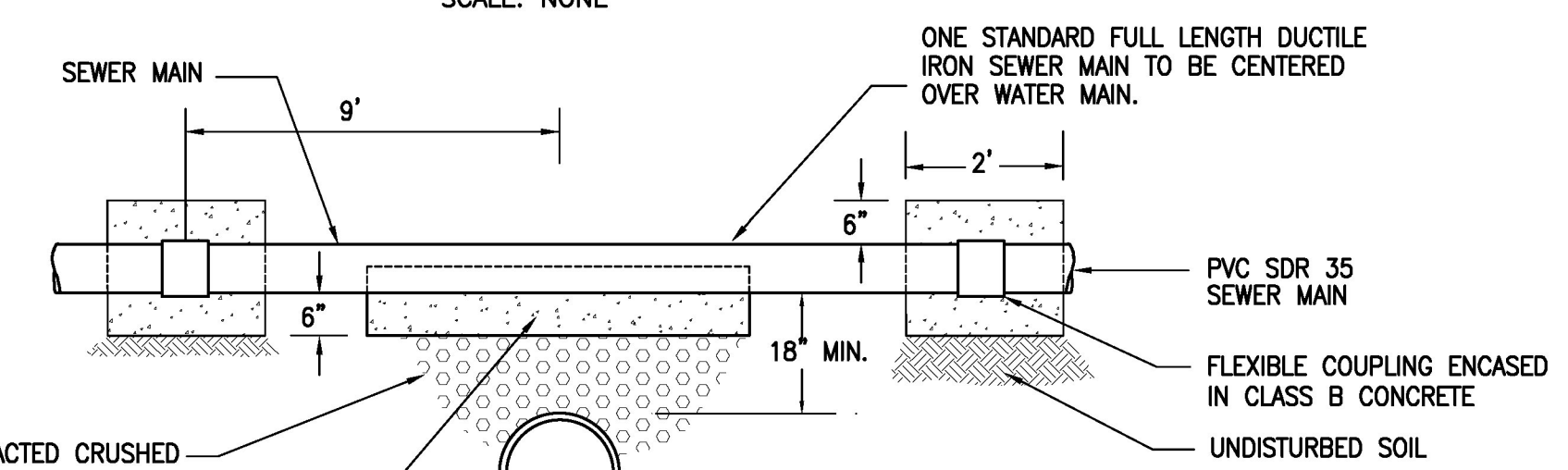
DRAWING No.	MATERIAL	DIAMETER	LENGTH	STATIONING
2	STEEL	24"	50'	4+54
2	STEEL	24"	55'	5+89



E TYPICAL SLEEVE DETAIL
SCALE: NONE



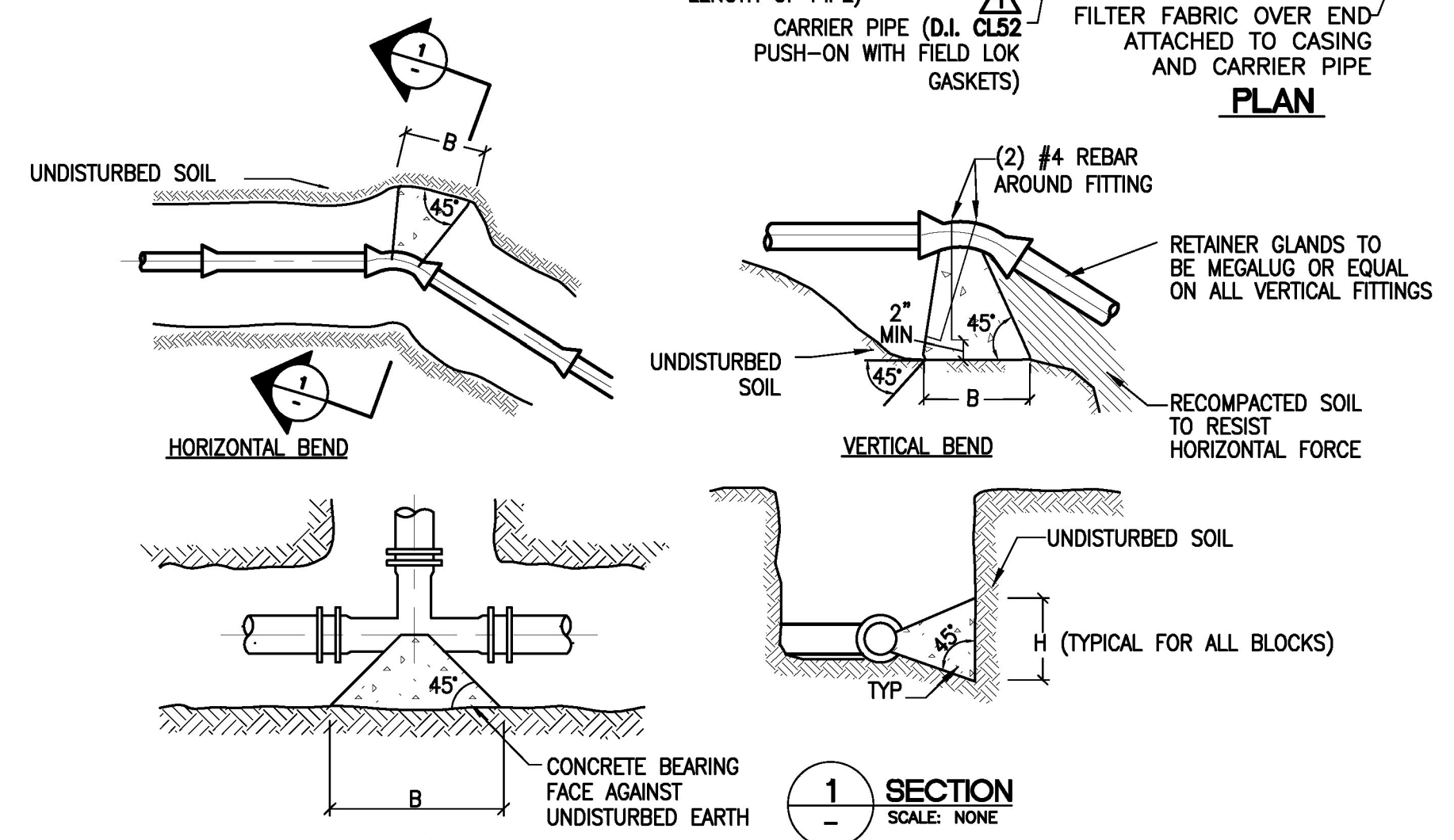
WATER MAIN ABOVE SEWER - PREFERRED METHOD
SCALE: NONE



WATER MAIN BELOW SEWER - NOT THE RECOMMENDED METHOD
SCALE: NONE

- SEPARATION DETAIL NOTES:**
- PARALLEL INSTALLATION: WATER MAINS SHALL BE LAID AT LEAST 10 FEET HORIZONTALLY FROM ANY EXISTING OR PROPOSED MANHOLE, SANITARY SEWER OR FORCEMAIN. THIS DISTANCE CAN BE REDUCED TO 5 FEET FOR STORM SEWERS. THE DISTANCE SHALL BE MEASURED EDGE TO EDGE. IF THIS DISTANCE CANNOT BE OBTAINED, THE WATER MAIN SHALL BE LAID IN A SEPARATE TRENCH OR ON AN UNDISTURBED EARTH SHELF LOCATED ON ONE SIDE OF THE SEWER AT SUCH AN ELEVATION THAT THE BOTTOM OF THE WATER MAIN IS AT LEAST 18 INCHES ABOVE THE TOP OF THE SEWER. WHERE SEWERS ARE BEING INSTALLED, AND THE ABOVE SEPARATION CAN NOT BE MET, THE SEWER MATERIALS SHALL BE WATER MAIN PIPE OR EQUAL AND SHALL BE PRESSURE TESTED TO ENSURE WATERTIGHTNESS.
 - CROSSINGS: SEE THE DETAILS ABOVE.

F WATER/SEWER SEPARATION DETAIL
SCALE: NONE



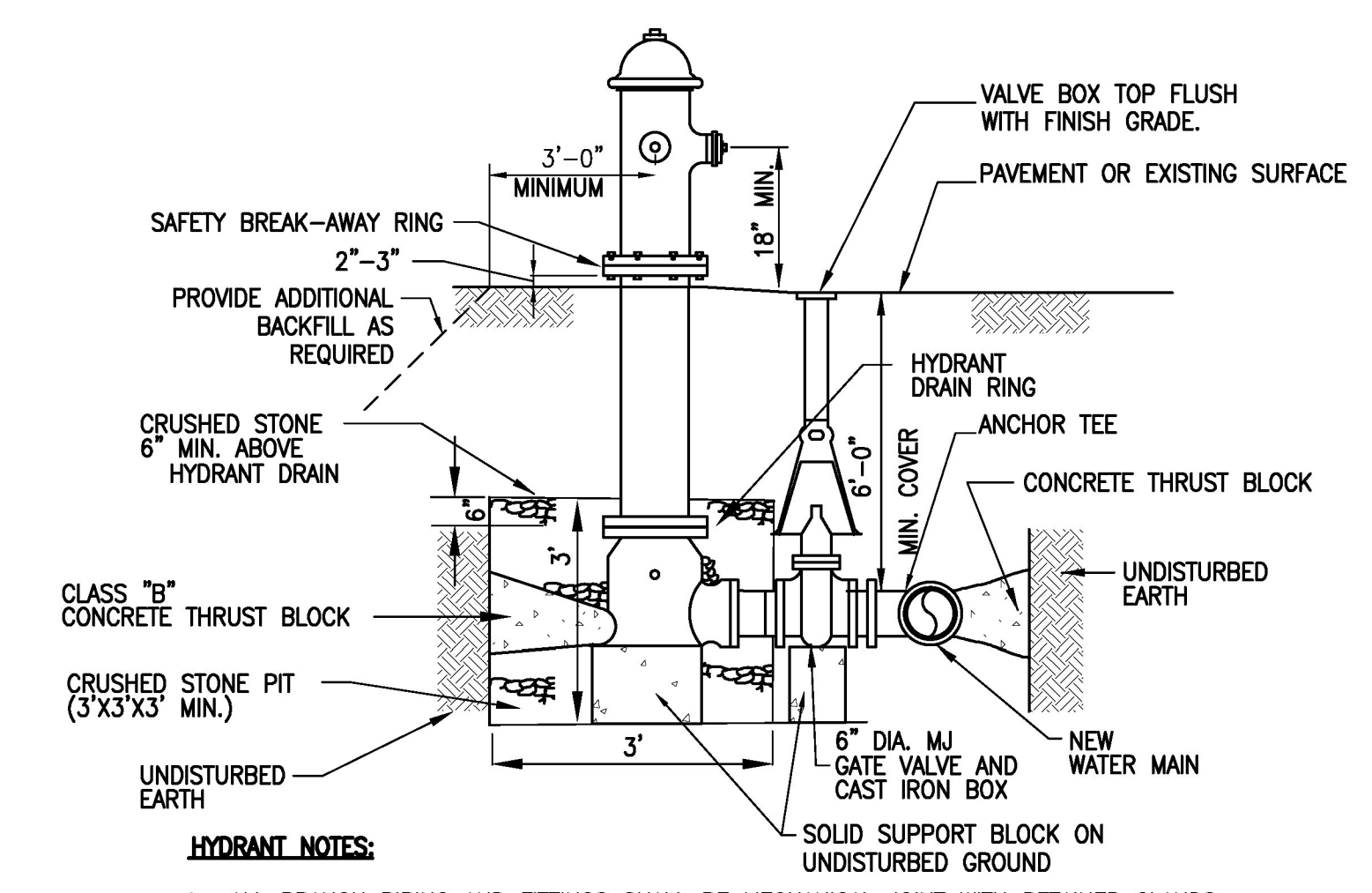
- NOTES:**
- ALL THRUST BLOCKS SHALL BE CLASS "B" CONCRETE. SEE SPEC SECTION 03305
 - CONCRETE SHALL BE PLACED SO AS NOT TO HAMPER THE FUTURE REMOVAL OF A FITTING.
 - ALL FITTINGS ARE TO BE WRAPPED WITH POLYETHYLENE.

MINIMUM BEARING FACE "HEIGHTS AND WIDTHS" FOR CONCRETE THRUST BLOCKS (TEST PRESSURE = 150 PSI)

PIPELINE SIZE	11 1/4" BEND		22 1/2" BEND		45" BEND		90" BEND		TEES & PLUGS		WYES	
	H	B	H	B	H	B	H	B	H	B	H	B
8"	1.0	1.0	1.0	1.75	1.5	2.25	1.75	3.5	1.5	3.0	1.5	2.25
10"	1.25	1.25	1.25	2.0	1.75	2.75	2.0	3.75	1.75	3.0	1.75	2.75
12"	1.25	1.5	1.25	2.25	1.75	3.0	2.25	4.0	2.0	3.0	1.75	3.0

- NOTES:**
- HYDROSTATIC AND LEAKAGE TEST PRESSURE PER SPECIFICATIONS.
 - UNDISTURBED EARTH. SIDE OF TRENCH OR OTHER EXCAVATION.
 - SEE DIAGRAM FOR H AND B LOCATION REFERENCE. H AND B IN FEET.
 - PLACE 4 MIL POLYETHYLENE BETWEEN FITTINGS AND THRUST BLOCKS.
 - MINIMUM BEARING FACE IS BASED ON A SOIL TYPE WITH ASHTO CLASSIFICATION OF GROUP A-1 AND A-2 FOR GRANULAR MATERIALS. OTHER SOIL TYPES MAY REQUIRE AN INCREASE IN THE BEARING FACES, AS IDENTIFIED DURING CONSTRUCTION.
 - NO JOINTS SHALL BE COVERED WITH CONCRETE.
 - THRUST RESTRAINT IS REQUIRED FOR ALL TEES, BENDS, REDUCERS, CAPS, PLUGS, AND CROSSES.

G THRUST BLOCK DETAILS
SCALE: NONE

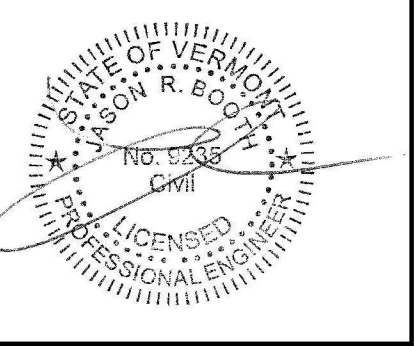


- HYDRANT NOTES:**
- ALL BRANCH PIPING AND FITTINGS SHALL BE MECHANICAL JOINT WITH RETAINER GLANDS.
 - HYDRANTS WHICH ARE INSTALLED WHERE THE GROUND WATER TABLE IS ABOVE THE HYDRANT WASTE ORIFICES SHALL HAVE THE ORIFICES PLUGGED. HYDRANTS WITH PLUGGED ORIFICES SHALL BE LABELED "ND" FOR NON-DRAINING IN 3" HIGH ORANGE PAINTED LETTERS ON THE BONNET FACING THE ROAD. HYDRANT DRAIN SHALL BE LEFT UNPLUGGED OR PLUGGED AS DETERMINED BY THE ENGINEER.
 - PROVIDE ADDITIONAL BACKFILL AROUND NEW HYDRANT AS REQUIRED TO PROVIDE ACCESS AND MAINTAIN MINIMUM DEPTH OF COVER.
 - CONTRACTOR SHALL USE HYDRANT RISERS OR MECHANICAL JOINT OFFSETS AS NECESSARY TO ACHIEVE SPECIFIED BURY DEPTH OF HYDRANT. COST OF ANY OFFSET SHALL BE INCLUDED IN THE UNIT PRICE FOR HYDRANT INSTALLATION.

H HYDRANT DETAIL
SCALE: NONE

CIVIL & ENVIRONMENTAL ENGINEERS
6 Market Place, Suite 2
Essex Jct., VT 05452
P: 802.878.7733
F: 802.878.1742

FA & A
FORCIER
ALDRICH &
ASSOCIATES



TOWN OF MILTON
COUNTY OF CHITTENDEN
MILTON
STP 5800 (2)

NO.	DATE	REVISION DESCRIPTION	WAE	CHECKED
1	3/30/11	REVISED PIPE MATERIAL - DETAIL E		

DESIGNED: JAB
DRAWN: JEB
CHECKED: WAE
DATE: MAY, 2009

PROJECT NO.: 09033
DRAWING NO.: