

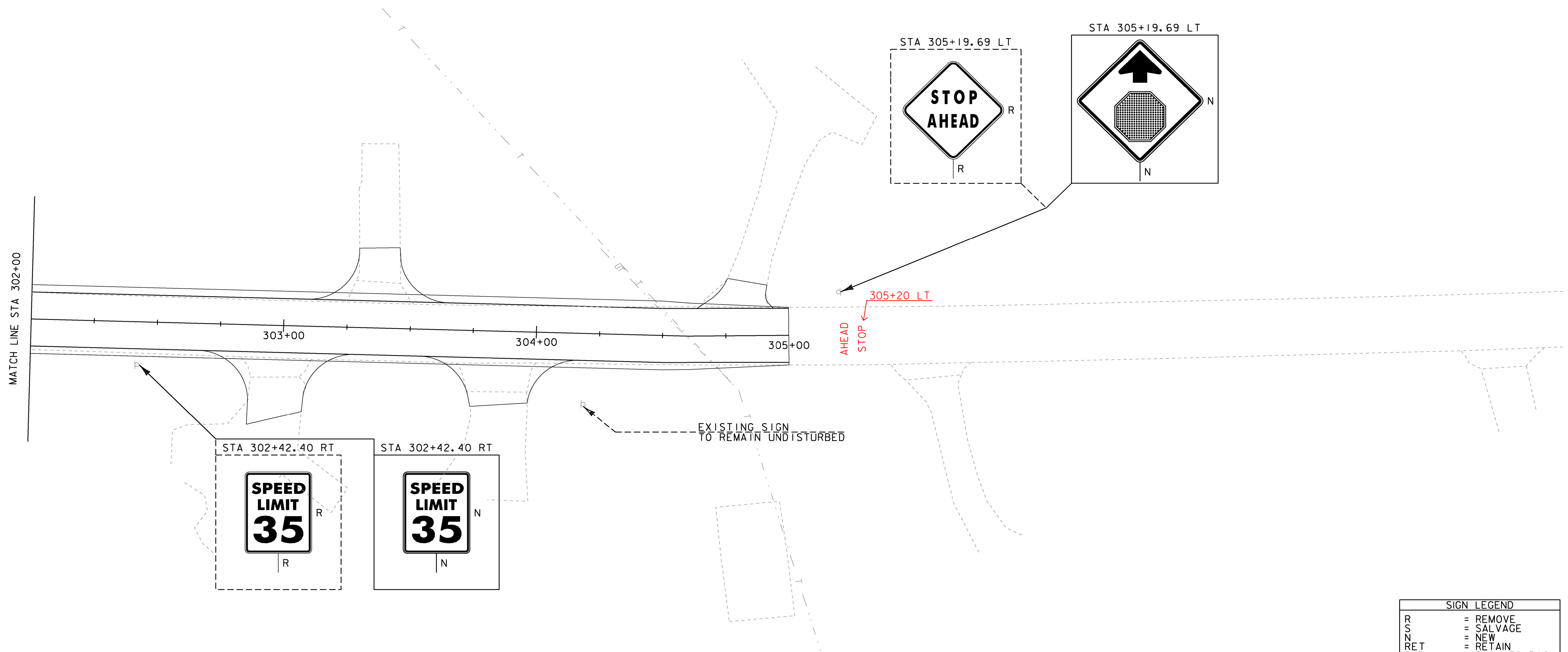
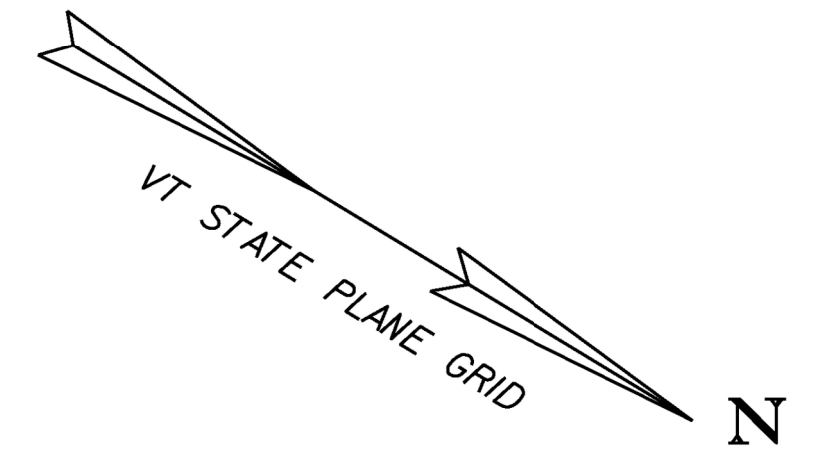
646.406 - DURABLE 4" WHITE LINE, RECESSED POLYUREA  
 STA 302+00.00 LT - 305+00.00 LT (SOLID)  
 STA 302+00.00 RT - 305+00.00 RT (SOLID)

646.600 - TEMPORARY 4" WHITE LINE  
 STA 302+00.00 LT - 305+00.00 LT (SOLID)  
 STA 302+00.00 RT - 305+00.00 RT (SOLID)

675.50 - REMOVING SIGNS  
 STA 302+42.40 RT  
 STA 305+19.69 LT

646.416 - DURABLE 4" YELLOW LINE, RECESSED POLYUREA  
 STA 302+00.00 CL - 305+00.00 CL (SOLID - DOUBLE)

646.610 - TEMPORARY 4" YELLOW LINE  
 STA 302+00.00 CL - 305+00.00 CL (SOLID - DOUBLE)



NOTE: MATCH EXISTING PAVEMENT MARKINGS AT STA 305+00.00



SIGN LEGEND	
R	= REMOVE
S	= SALVAGE
N	= NEW
RET	= RETAIN
B-B	= BACK TO BACK
EXISTING	= - - - - -
NEW	= _____

PROJECT NAME:	MILTON	PLOT DATE:	23-FEB-2011
PROJECT NUMBER:	STP 5800 (2)	DRAWN BY:	J. DEVLIN
FILE NAME:	+92D289+spmbdr.dgn	CHECKED BY:	J. DEVLIN
PROJECT LEADER:	J. SCHULTZ	SHEET	62 OF 104
DESIGNED BY:	D. LYMAN	TSPM LAYOUT SHEET	4