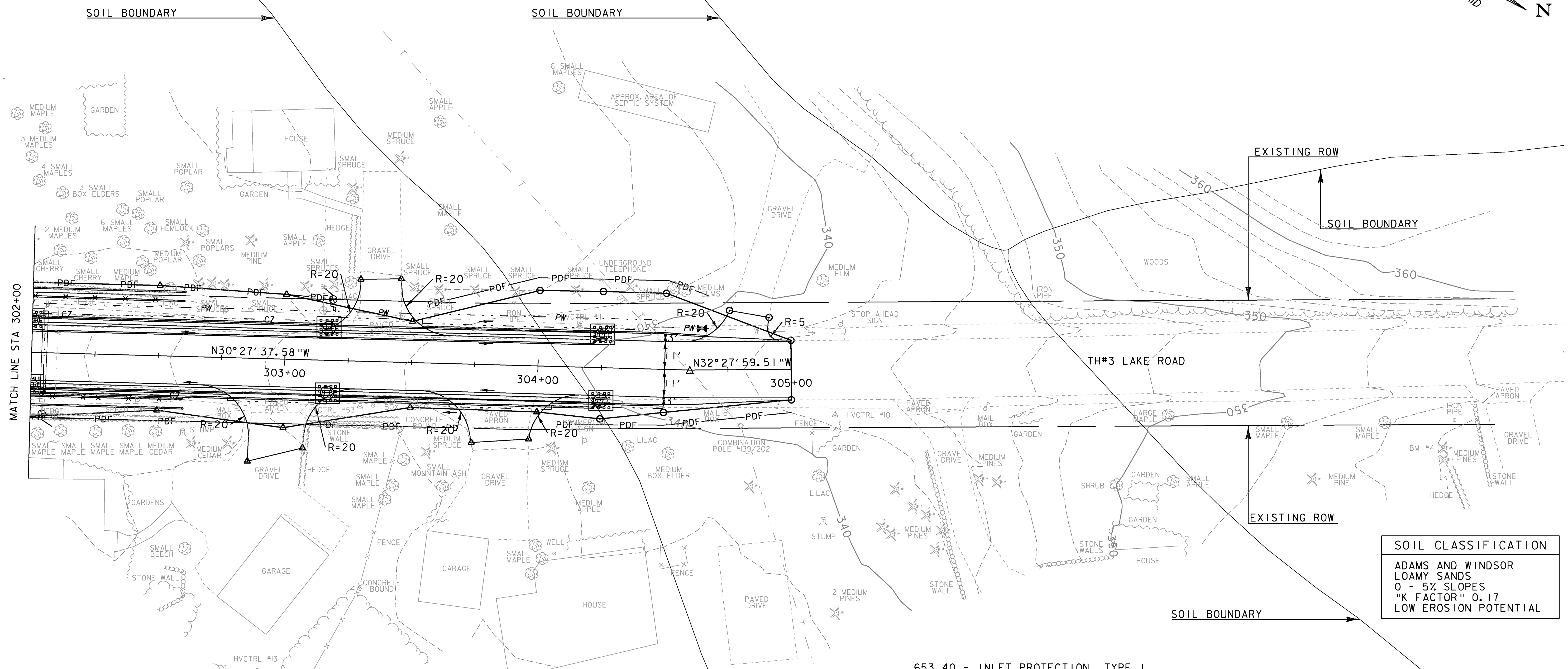
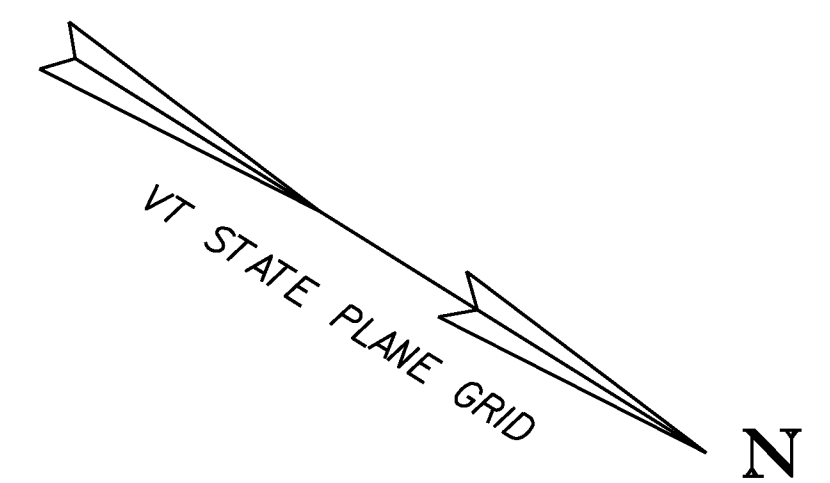


SOIL CLASSIFICATION
 ADAMS AND WINDSOR
 LOAMY SANDS
 0 - 5% SLOPES
 "K FACTOR" 0.17
 LOW EROSION POTENTIAL

SOIL CLASSIFICATION
 ADAMS AND WINDSOR
 LOAMY SANDS
 5 - 12% SLOPES
 "K FACTOR" 0.17
 LOW EROSION POTENTIAL

SOIL CLASSIFICATION
 PERU
 EXTREMELY STONY LOAM
 20 - 60% SLOPES
 "K FACTOR" 0.24
 MODERATE EROSION POTENTIAL

NOTE: SEE SHEET 43 FOR EPSC CONSTRUCTION NOTES



SOIL CLASSIFICATION
 ADAMS AND WINDSOR
 LOAMY SANDS
 0 - 5% SLOPES
 "K FACTOR" 0.17
 LOW EROSION POTENTIAL

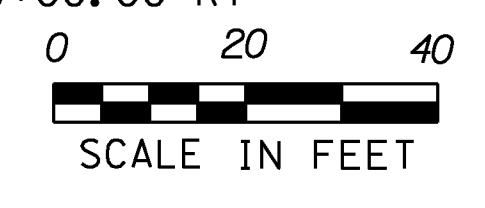
LEGEND

- SILT FENCE
- LIMITS OF SOIL DISTURBANCE
- EROSION MATTING
- PROJECT DEMARCATION FENCE
- STONE DROP INLET PROTECTION

653.40 - INLET PROTECTION, TYPE I
 STA 303+17.00 LT
 STA 303+17.00 RT
 STA 304+25.00 LT
 STA 304+25.00 RT

653.55 - PROJECT DEMARCATION FENCE
 STA 302+00.00 LT - 303+21.21 LT
 STA 302+00.00 RT - 302+75.28 RT
 STA 303+14.71 RT - 303+67.90 RT
 STA 303+55.55 LT - 304+67.54 LT
 STA 304+07.31 RT - 305+00.00 RT

EXISTING & PROPOSED WATERLINES
 ARE FOR REFERENCE ONLY. PLEASE
 REFER TO WATERLINE SHEETS 102-104



PROJECT NAME: MILTON
 PROJECT NUMBER: STP 5800 (2)
 FILE NAME: +92D289econstructionbdr.dgn PLOT DATE: 23-FEB-2011
 PROJECT LEADER: J. SCHULTZ DRAWN BY: J. DEVLIN
 DESIGNED BY: D. LYMAN CHECKED BY: J. DEVLIN
 EPSC CONSTRUCTION SHEET 4 SHEET 46 OF 104