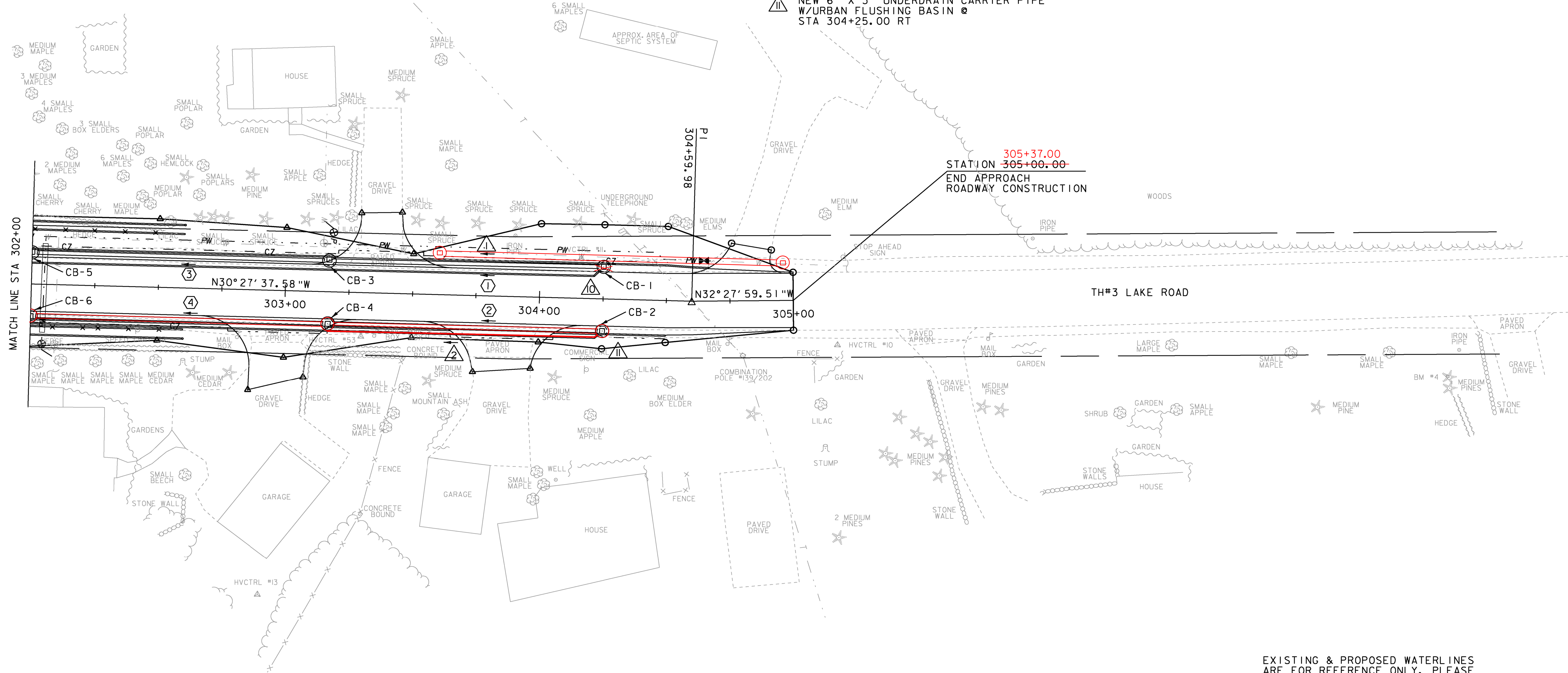


**NEW DRAINAGE 95.00**

- ① STA 304+25.00 LT - 303+17.00 RT  
NEW 18" X 108' RCP/CPEP (SL)  
W/4' PRCCB @ STA 304+25.00 LT  
OFFSET = 13.00' W/GRATE TYPE D (1)
- ② STA 304+25.00 RT - 303+17.00 RT  
NEW 18" X 108' RCP/CPEP (SL)  
W/4' PRCCB @ STA 304+25.00 RT  
OFFSET = 13.00' W/GRATE TYPE D (1)
- ③ STA 303+17.00 LT - 302+00.00 LT  
NEW 18" X 117' RCP/CPEP (SL)  
W/4' PRCCB @ STA 303+17.00 LT  
OFFSET = 12.61' W/GRATE TYPE D (1)
- ④ STA 303+17.00 RT - 302+00.00 RT  
NEW 18" X 117' RCP/CPEP (SL)  
W/4' PRCCB @ STA 303+17.00 RT  
OFFSET = 12.84' W/GRATE TYPE D (1)

- ① 605.10 6 INCH UNDERDRAIN PIPE  
STA 304+21.22 LT - 301+02.39 RT  
NEW 6" X 319' UNDERDRAIN
- ② STA 304+22.00 RT - 301+02.23 RT  
NEW 6" X 318' UNDERDRAIN
- ⑩ 605.20 6 INCH UNDERDRAIN CARRIER PIPE  
STA 304+25.00 LT - 304+21.22 LT  
NEW 6" X 4' UNDERDRAIN CARRIER PIPE  
W/URBAN FLUSHING BASIN @  
STA 304+25.00 LT
- ⑪ STA 304+25.00 RT - 304+22.00 RT  
NEW 6" X 3' UNDERDRAIN CARRIER PIPE  
W/URBAN FLUSHING BASIN @  
STA 304+25.00 RT



305+37.00  
STATION 305+00.00  
END APPROACH  
ROADWAY CONSTRUCTION

EXISTING & PROPOSED WATERLINES  
ARE FOR REFERENCE ONLY. PLEASE  
REFER TO WATERLINE SHEETS 102-104

PROJECT NAME:	MILTON	PLOT DATE:	23-FEB-2011
PROJECT NUMBER:	STP 5800 (2)	DRAWN BY:	D. LYMAN
FILE NAME:	+92d289bdr.dgn	CHECKED BY:	J. DEVLIN
PROJECT LEADER:	J. SCHULTZ	SHEET	33 OF 104
DESIGNED BY:	D. LYMAN		
DRAINAGE LAYOUT	4		

